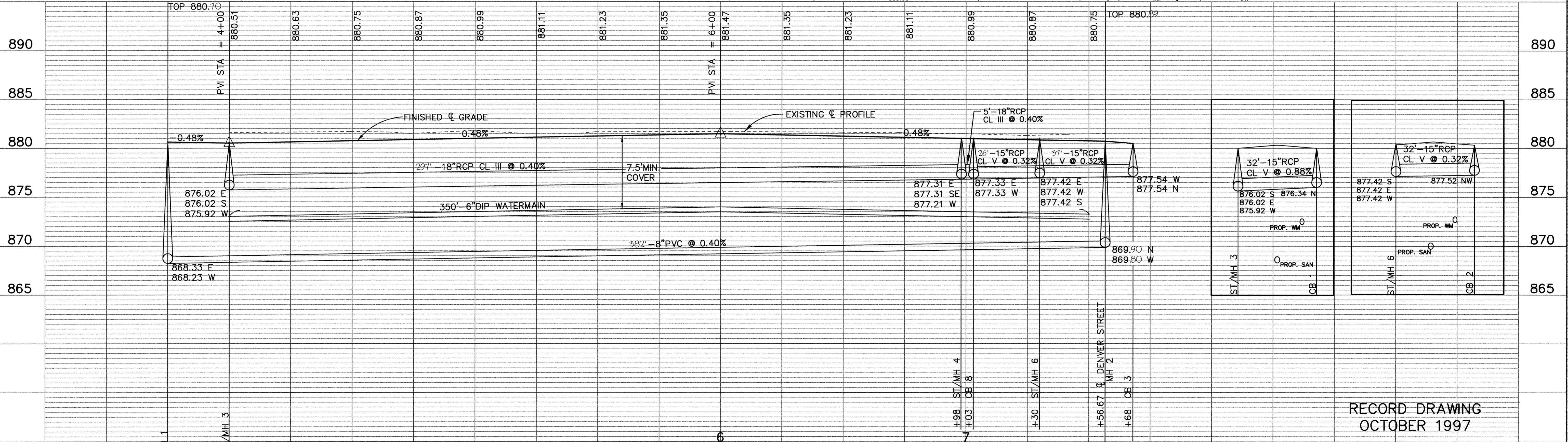
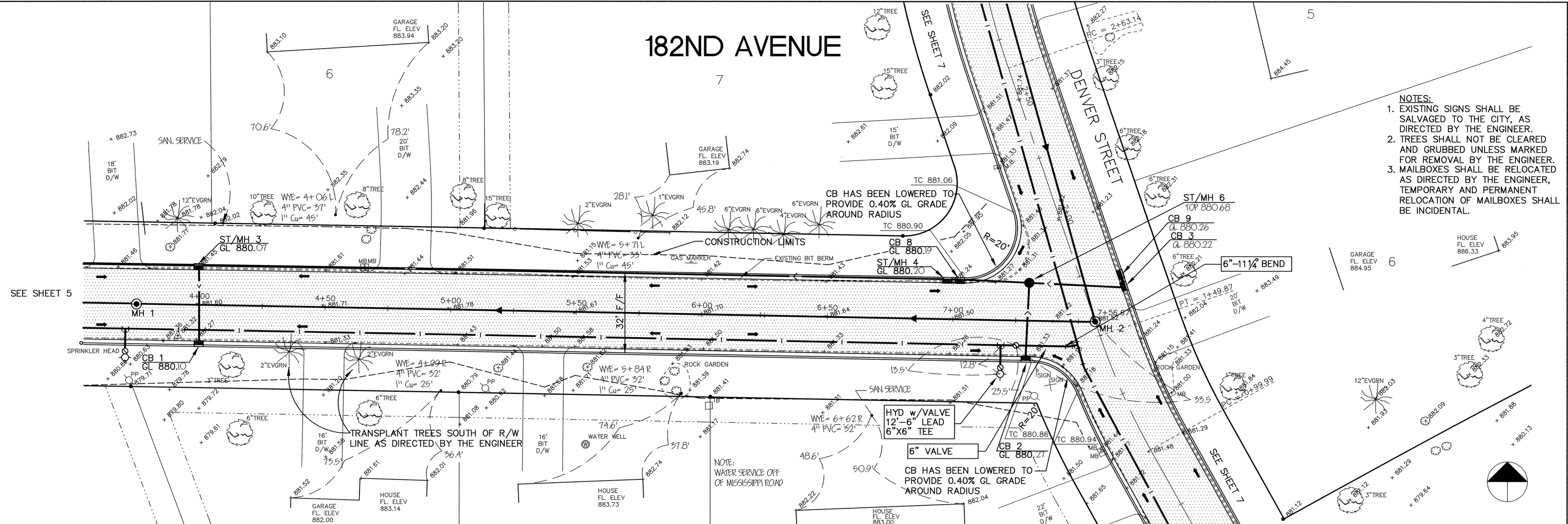


182ND AVENUE

- NOTES:
- EXISTING SIGNS SHALL BE SALVAGED TO THE CITY, AS DIRECTED BY THE ENGINEER.
 - TREES SHALL NOT BE CLEARED AND GRUBBED UNLESS MARKED FOR REMOVAL BY THE ENGINEER.
 - MAILBOXES SHALL BE RELOCATED AS DIRECTED BY THE ENGINEER, TEMPORARY AND PERMANENT RELOCATION OF MAILBOXES SHALL BE INCIDENTAL.

SEE SHEET 5



RECORD DRAWING
OCTOBER 1997

I HEREBY CERTIFY THAT THIS PLAN, SPECIFICATION, OR REPORT WAS PREPARED BY ME OR UNDER MY DIRECT SUPERVISION AND THAT I AM A DULY REGISTERED PROFESSIONAL ENGINEER UNDER THE LAWS OF THE STATE OF MINNESOTA.

John J. M...
DATE 12/3/96 REG. NO. 15316



1326 ENERGY PARK DRIVE
ST. PAUL, MINNESOTA 55108
(612) 644-4389

REVISIONS	DATE	DESCRIPTION	DESIGNED	CHECKED	DRAWN
0			SEF	RKM	RKM

GRAPHIC SCALE
0 5 20
VERT. 5

CITY OF ELK RIVER
ORONO LAKE 3RD ADDITION
STREET AND UTILITY IMPROVEMENTS
182ND AVENUE

4+00 TO 7+56.67

DATE NOV. 1996 SHEET 6 OF 31 SHEETS PROJECT NO. 230-320