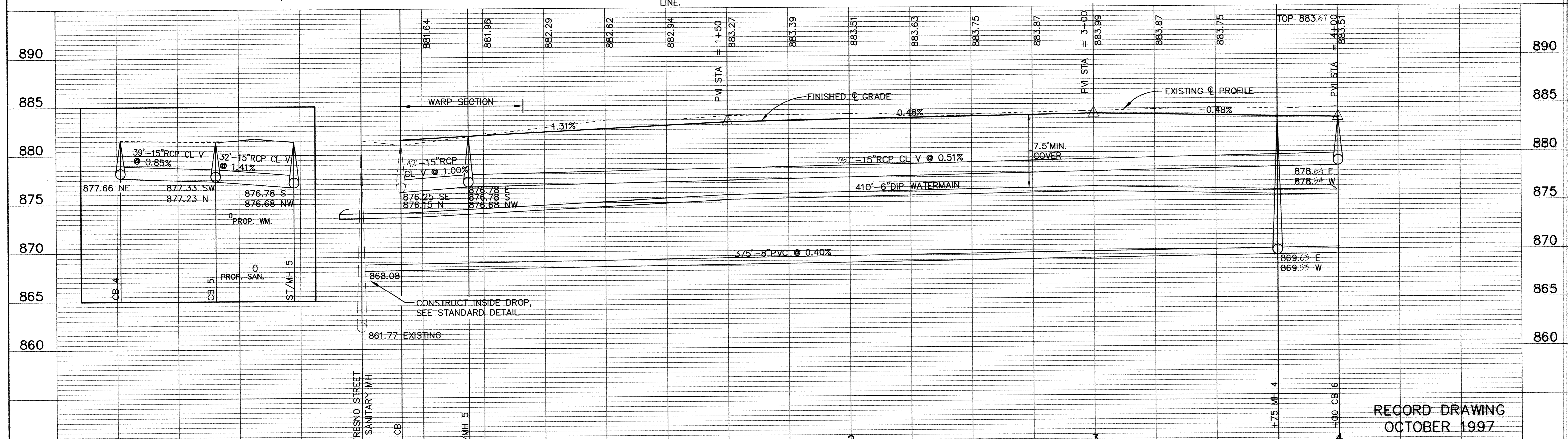
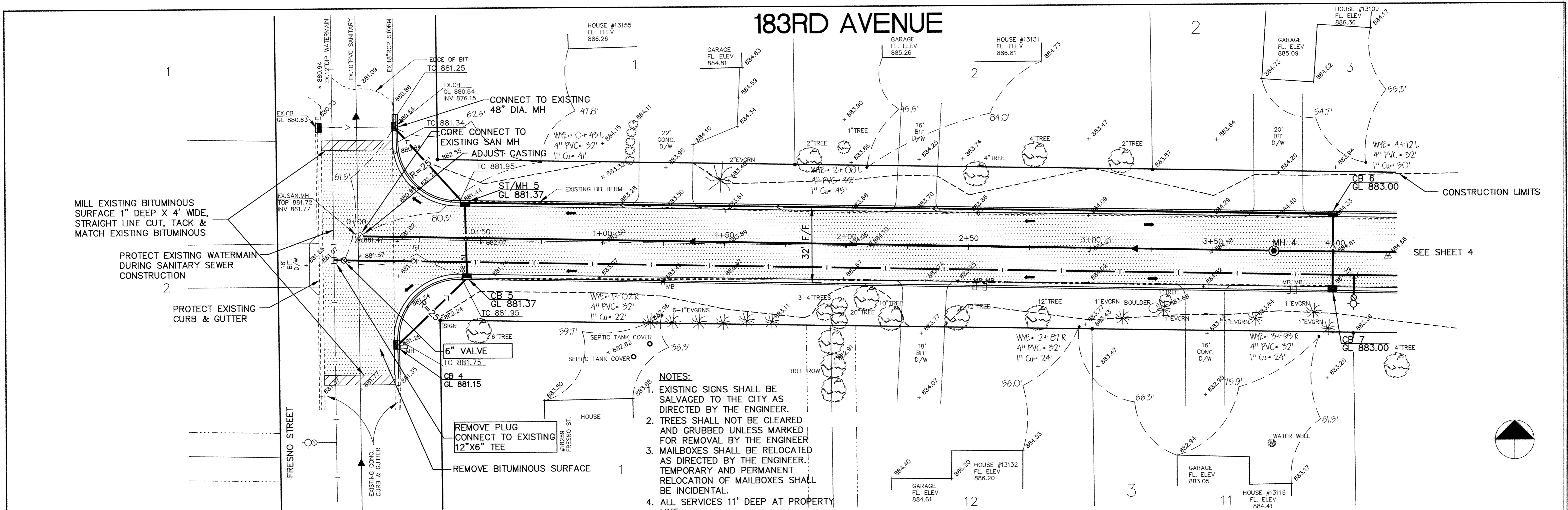


183RD AVENUE



I HEREBY CERTIFY THAT THIS PLAN, SPECIFICATION, OR REPORT WAS PREPARED BY ME OR UNDER MY DIRECT SUPERVISION AND THAT I AM A DULY REGISTERED PROFESSIONAL ENGINEER UNDER THE LAWS OF THE STATE OF MINNESOTA.

Emily J. Maurer
DATE 12/2/96 REG. NO. 15316

MSA
CONSULTING ENGINEERS

1326 ENERGY PARK DRIVE
ST. PAUL, MINNESOTA 55108
(612) 644-4389

REVISIONS	DATE	DESCRIPTION	DESIGNED	CHKD	SEF

CITY OF ELK RIVER
ORONO LAKE 3RD ADDITION
STREET AND UTILITY IMPROVEMENTS
183RD AVENUE

DATE NOV. 1996 SHEET 3 OF 31 SHEETS PROJECT NO. 230-320

SD&C PRODUCTS • NEW HOPE, MINNESOTA
 REPRODUCED BY PART NUMBER 8532
 SD&C PRODUCTS • NEW HOPE, MINNESOTA
 REPRODUCED BY PART NUMBER 8532
 SD&C PRODUCTS • NEW HOPE, MINNESOTA
 REPRODUCED BY PART NUMBER 8532
 SD&C PRODUCTS • NEW HOPE, MINNESOTA
 REPRODUCED BY PART NUMBER 8532