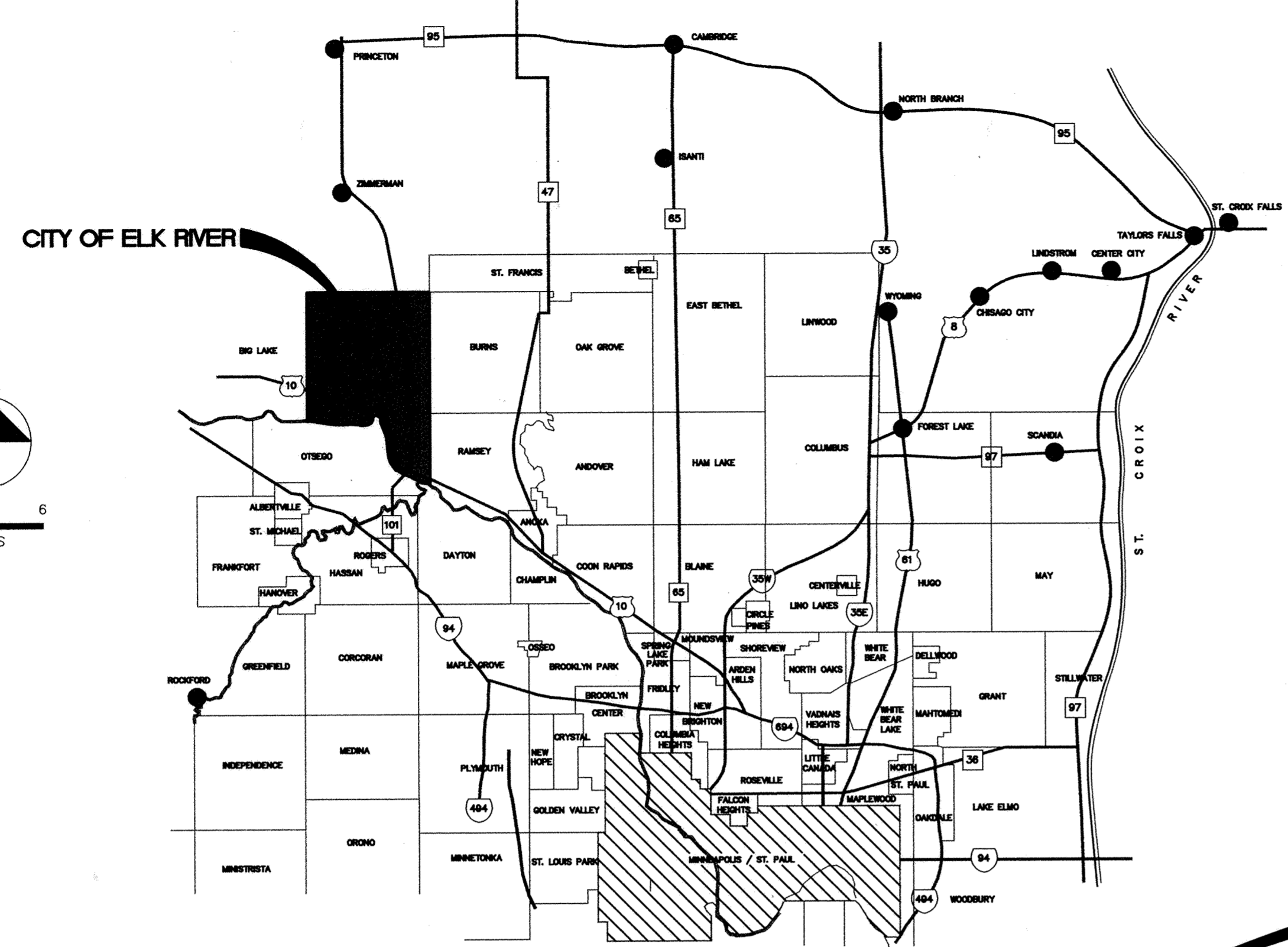


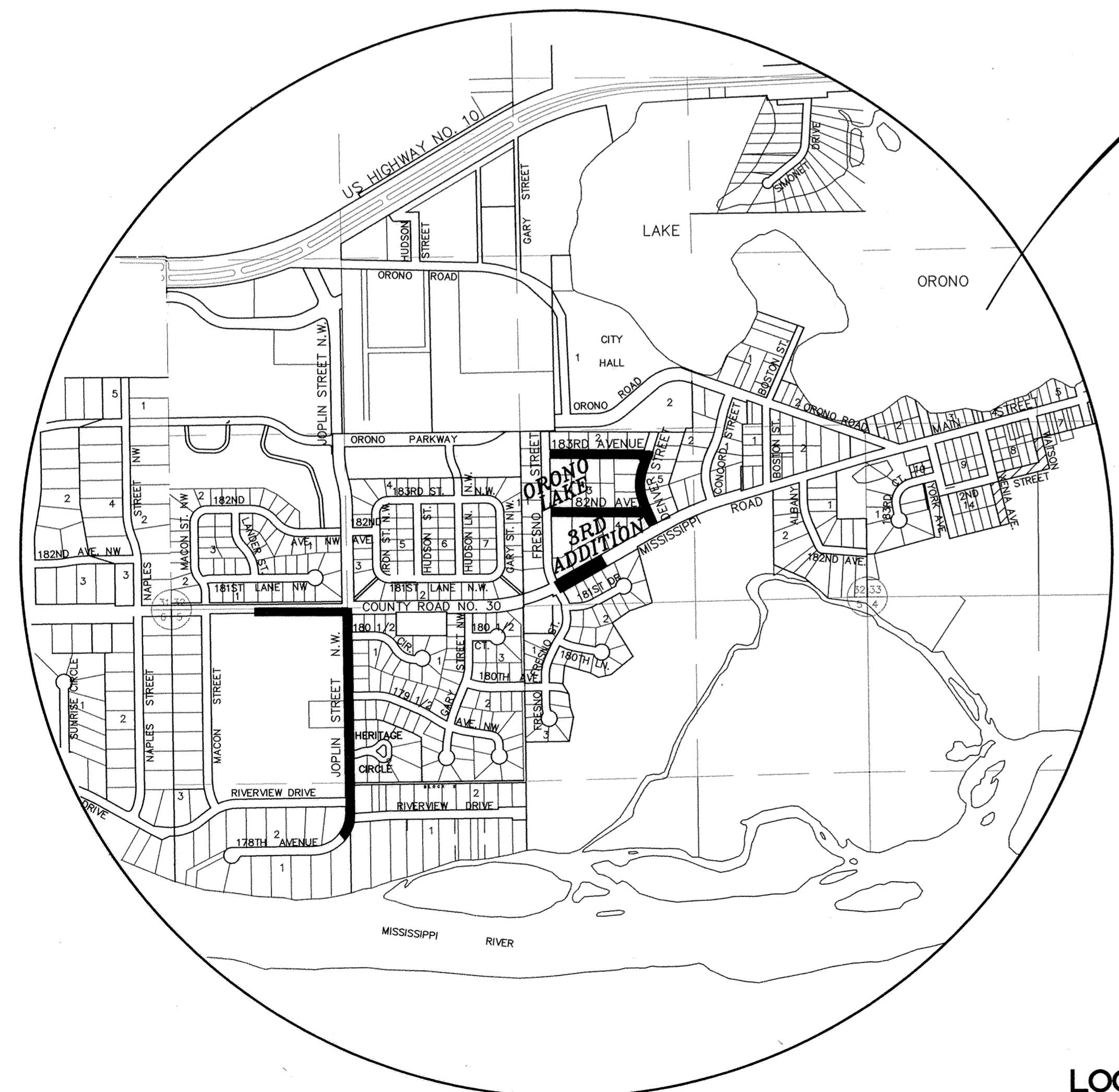
ORONO LAKE 3RD ADDITION STREET RECONSTRUCTION, SANITARY SEWER, WATERMAIN AND STORM SEWER

JOPLIN STREET STREET RECONSTRUCTION AND STORM SEWER

LOWELL AVENUE STREET RECONSTRUCTION



PROJECT LOCATIONS



ORONO LAKE 3RD ADDITION
& JOPLIN STREET



LOWELL AVENUE

I HEREBY CERTIFY THAT THIS PLAN, SPECIFICATION,
OR REPORT WAS PREPARED BY ME OR UNDER MY DIRECT
SUPERVISION AND THAT I AM A DULY REGISTERED
PROFESSIONAL ENGINEER UNDER THE LAWS OF THE
STATE OF MINNESOTA.
Tony Mauer
DATE 12/9/96 REG. NO. 15316



1326 ENERGY PARK DRIVE
ST. PAUL, MINNESOTA 55108
(612) 644-4389

PREPARED FOR:



NOVEMBER 1996

SHEET 1 OF 31

RECORD DRAWING
OCTOBER 1997