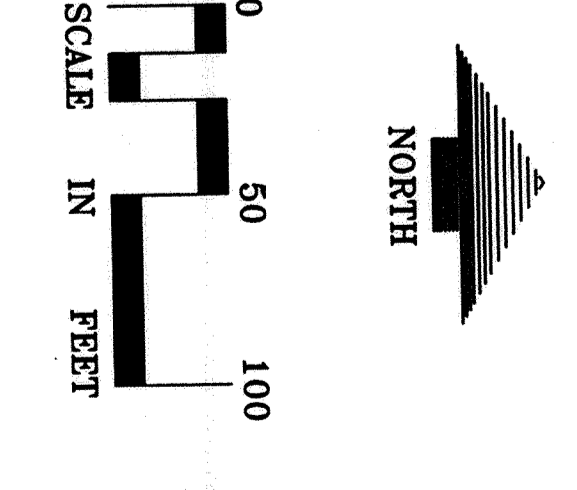
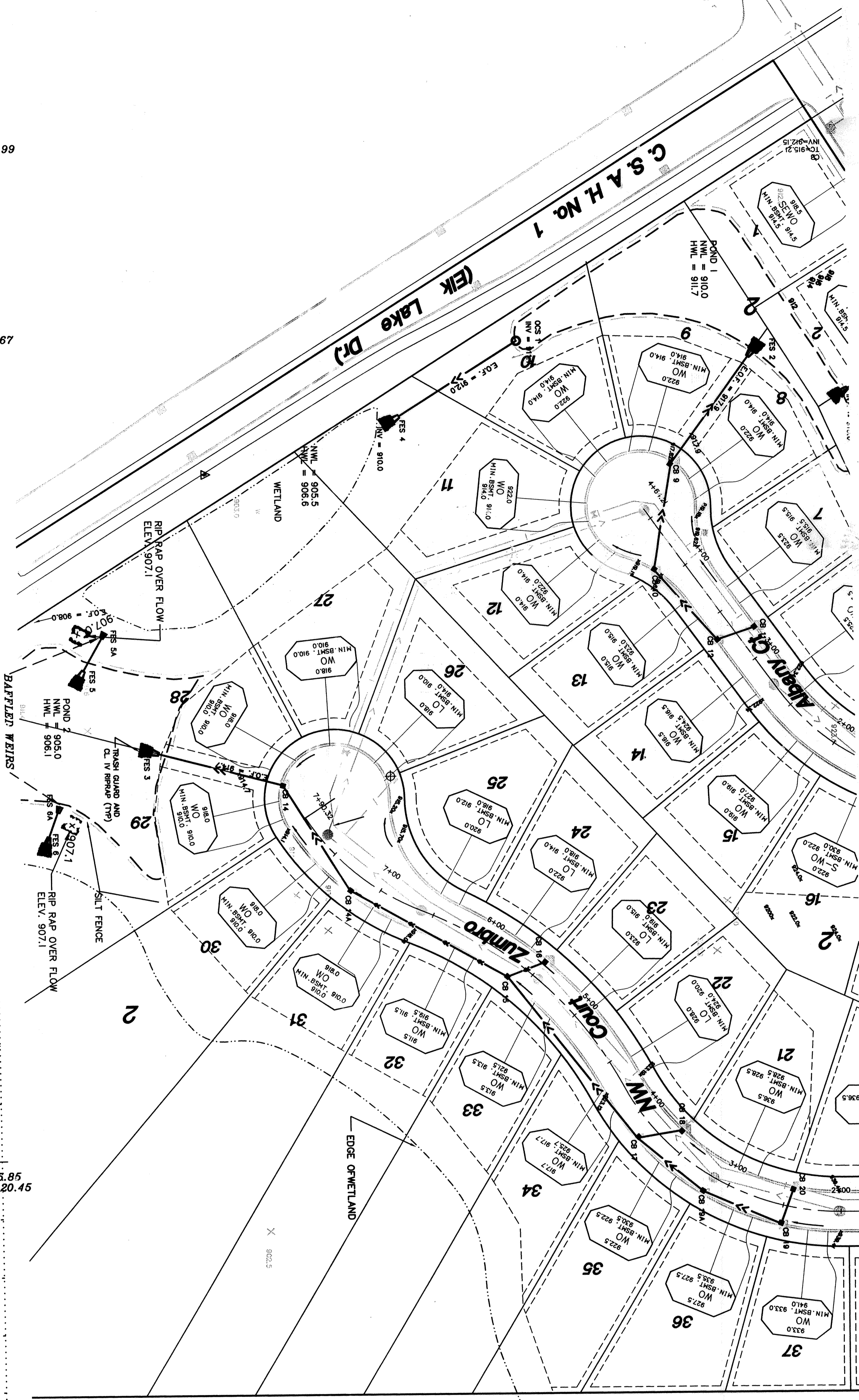
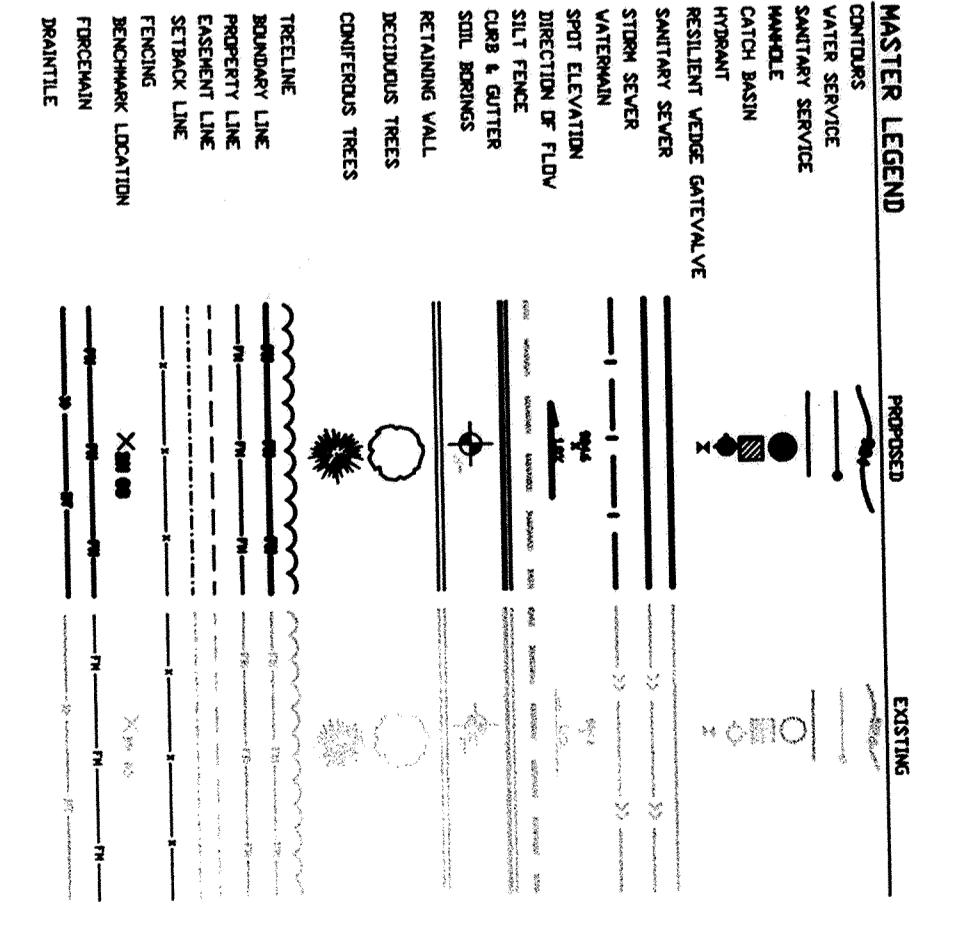


MH 10
T.C. = 912.50
INV. = 899.50



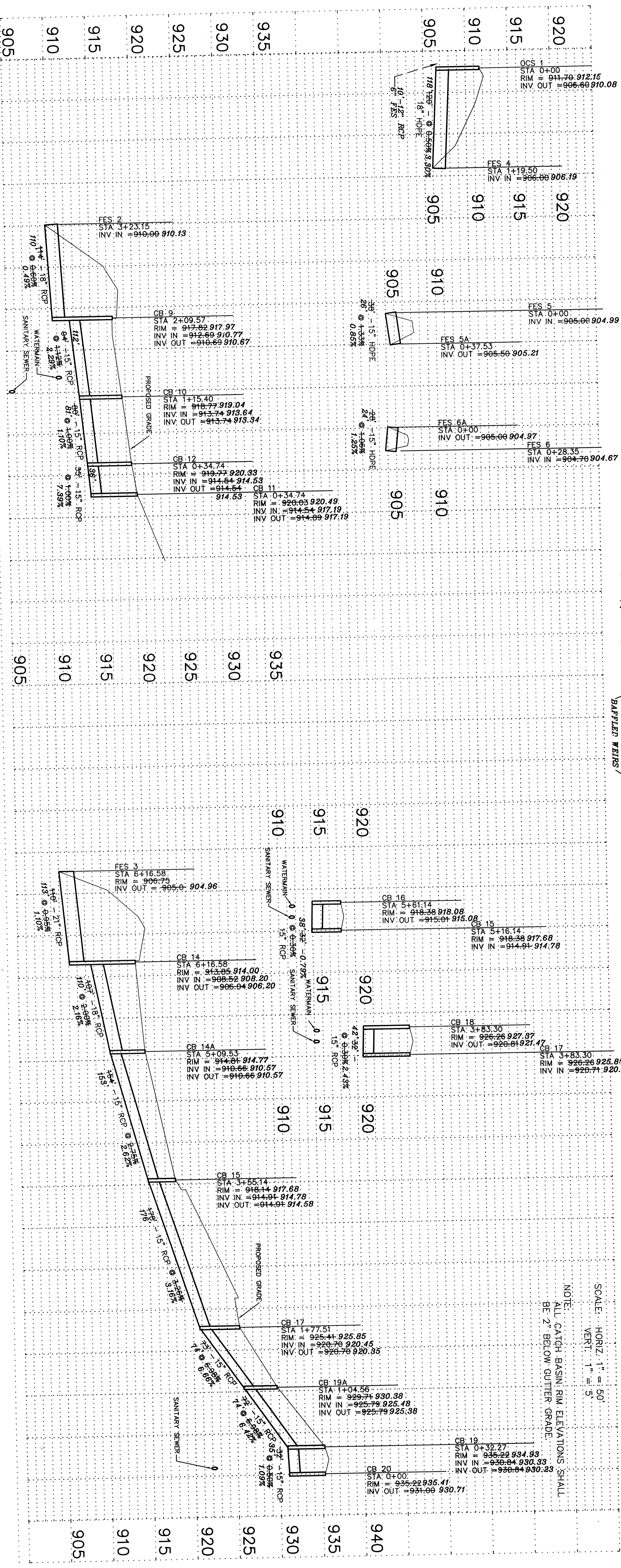
NOTE:
PROJECT WAS CONSTRUCTED IN
GENERAL CONFORMANCE TO
PLANS AND SPECIFICATIONS.

RECORDED DRAWING
This record drawing has been prepared in part, based upon information received from the contractor. The engineer is not responsible for the accuracy of the information received from the contractor. The engineer's responsibility is to verify the accuracy of the information received from the contractor and to issue a record drawing of the project. The record drawing is not a warranty of the accuracy of the information received from the contractor. The engineer's responsibility is to issue a record drawing of the project. The record drawing is not a warranty of the accuracy of the information received from the contractor.



SCALE: HORIZ. 1" = 50'
VERT. 1" = 5'

NOTE:
ALL CATCH BASIN RIM ELEVATIONS SHALL
BE 2" BELOW GUTTER GRADE.



ROYAL OAKS REALTY, INC.
1000 SHOREVIEW, JMN 55128
TEL: 651-483-5518
FAX: 651-483-5642

**CITY OF
ELK RIVER
MINNESOTA**

LOUCKS ASSOCIATES
Storm Sewer
Plan and Profile

PROJECT NO. 02-015
SHEET NO. C6-1