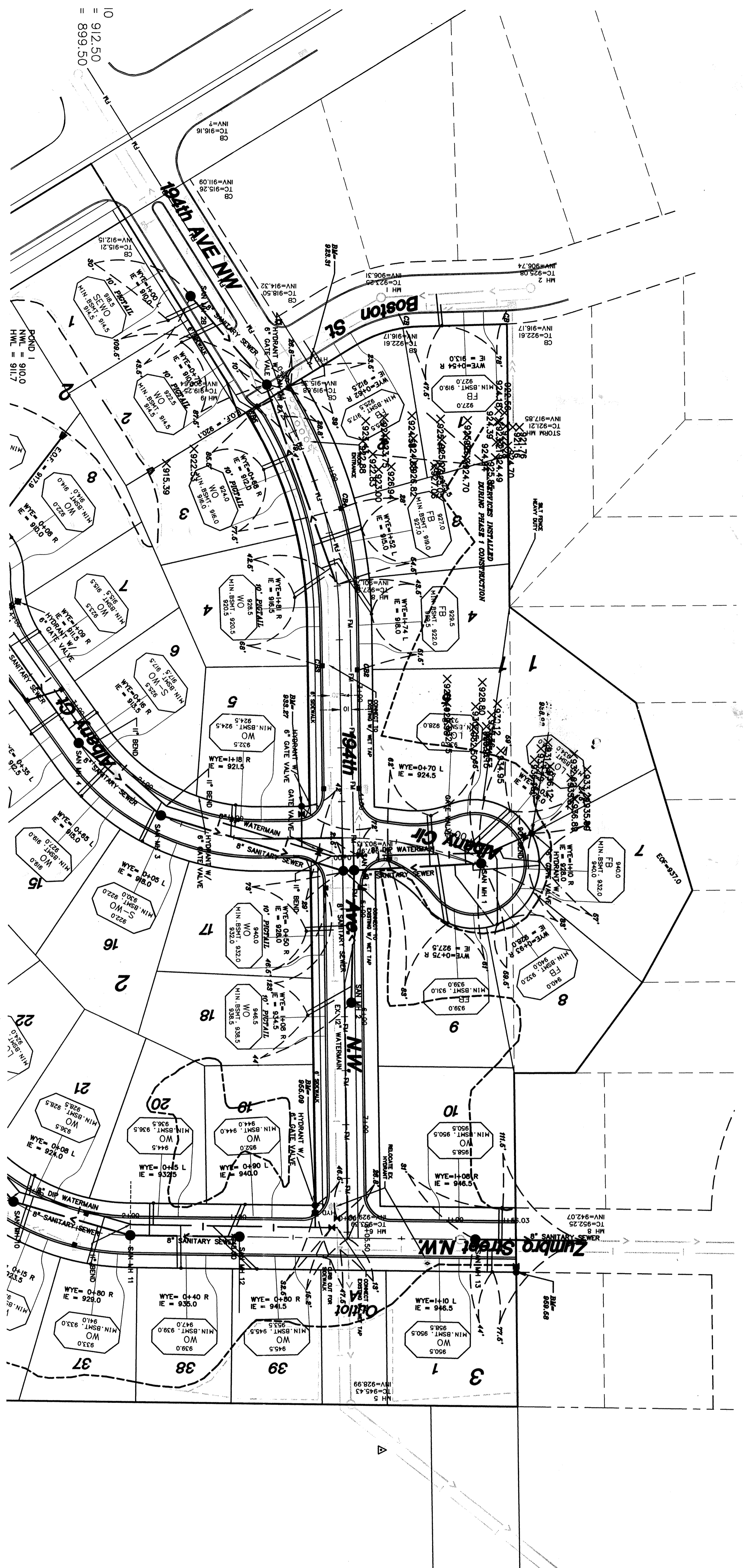
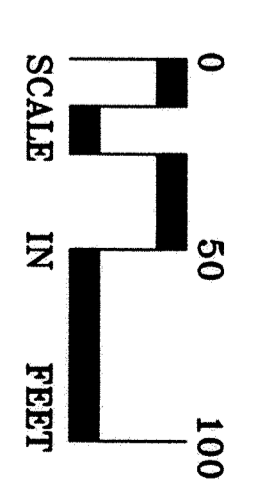
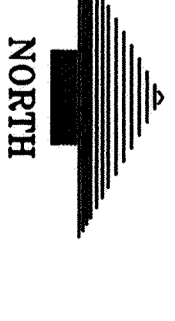


**NOTE:**  
PROJECT WAS CONSTRUCTED IN  
GENERAL CONFORMANCE TO  
PLANS AND SPECIFICATIONS.

**RECORD DRAWING**

This record drawing has been prepared in part, based upon information furnished by others. It is not intended to be a final record drawing. LINDS & ASSOCIATES, INC. cannot assume its responsibility for the accuracy of this record drawing or for any errors incorporated into it as a result of those relying on this to obtain independent verification of its accuracy before applying it for any purpose.

Prepared By: *Kentley, Clark* Date: 12/27/08



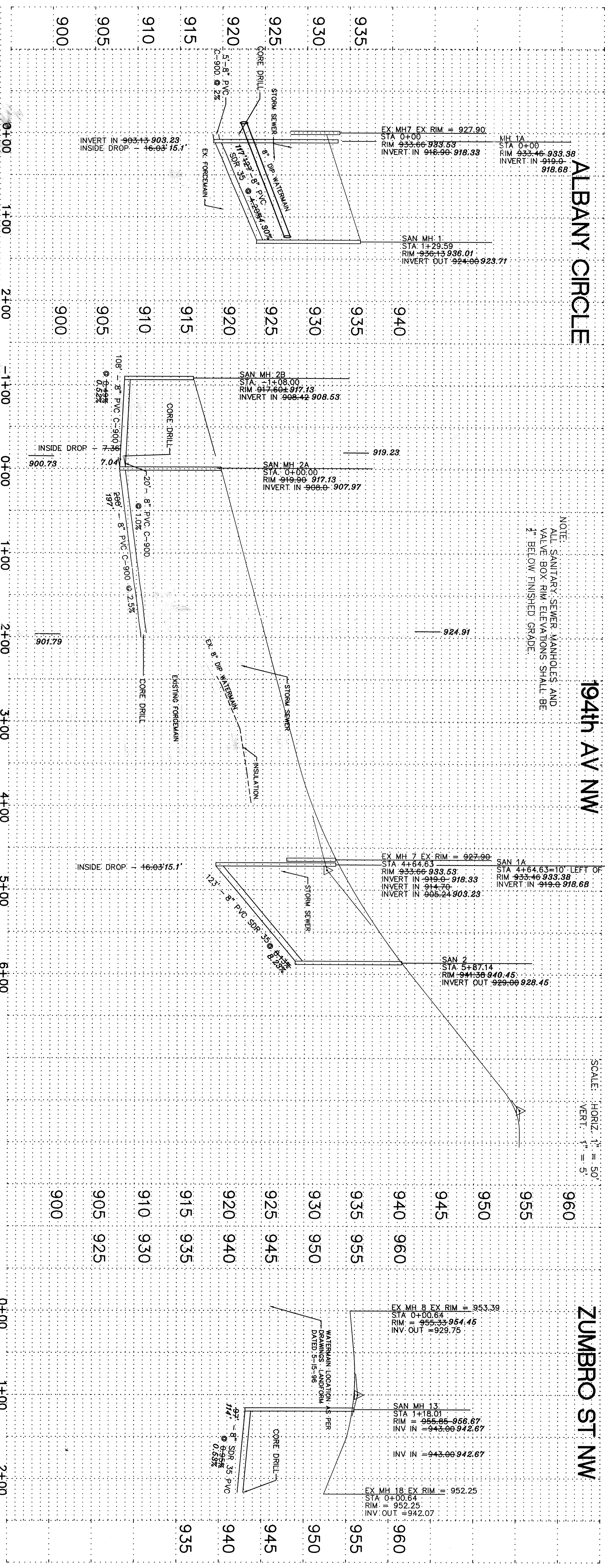
**ALBANY CIRCLE**

**194th AV NW**

**ZUMBRO ST NW**

NOTE:  
ALL SANITARY SEWER MANHOLES AND VALVE BOX RIM ELEVATIONS SHALL BE 1" BELOW FINISHED GRADE.

SCALE: HORIZ. 1" = 50'  
VERT. 1" = 5'



<p><b>NORDIC HILLS</b> CITY OF ELK RIVER MINNESOTA</p>		<p>ROYAL OAKS REALTY, INC. 1000 CO. RD. E. WEST SOTE 150 TEL. 651-483-5018 FAX 651-483-5042</p>	
<p><b>ASSOCIATES</b></p>		<p><b>LOUCKS</b></p>	
<p>SANITARY SEWER &amp; WATERMAIN PLAN AND PROFILE</p>		<p>DATE: 12/27/08 PROJECT NO: 02-015 SHEET NO: C4-2</p>	