

MH 10
T.C. = 912.50
INV. = 899.50

EX MH 7 - EX RIM = 927.90
STA 0+00.00
RIM = 933.66 933.53
INV. IN = 903.43 903.23
INSIDE DROP 918.33

SAN MH 3
STA 1+70.55
RIM = 927.36 927.24
INV. IN = 903.93 903.74
INV. OUT. = 903.93 903.74

SAN MH 4
STA 2+72.98
RIM = 922.46 922.16
INV. IN = 904.33 904.15
INV. OUT. = 904.33 904.15

SAN MH 5
STA 4+58.95
RIM = 919.25 919.14
INV. IN = 905.08 905.14
INV. OUT. = 905.08 905.14

SAN MH 6
PROPERTY LINE LOT 12 & 26 BLK 2
RIM = 910.56 912.19
INV. IN = 905.89 905.39
INV. OUT. = 905.89 905.55

SAN MH 7
STA 7+66.78
RIM = 914.45 915.02
INV. IN = 906.49 906.99
INV. OUT. = 906.49 906.66

SAN MH 8
STA 9+33.11
RIM = 916.15 916.28
INV. IN = 907.23 907.38
INV. OUT. = 907.23 907.38

SAN MH 9
STA 5+43.55
RIM = 918.26 918.72
INV. IN = 907.99 907.92
INV. OUT. = 907.99 907.92

SAN MH 10
STA 5+13.52
RIM = 930.56 931.13
INV. IN = 920.57 920.53
INV. OUT. = 920.57 920.53

SAN MH 11
STA 2+00.00
RIM = 939.25 939.33
INV. IN = 928.67 928.53
INV. OUT. = 928.67 928.53

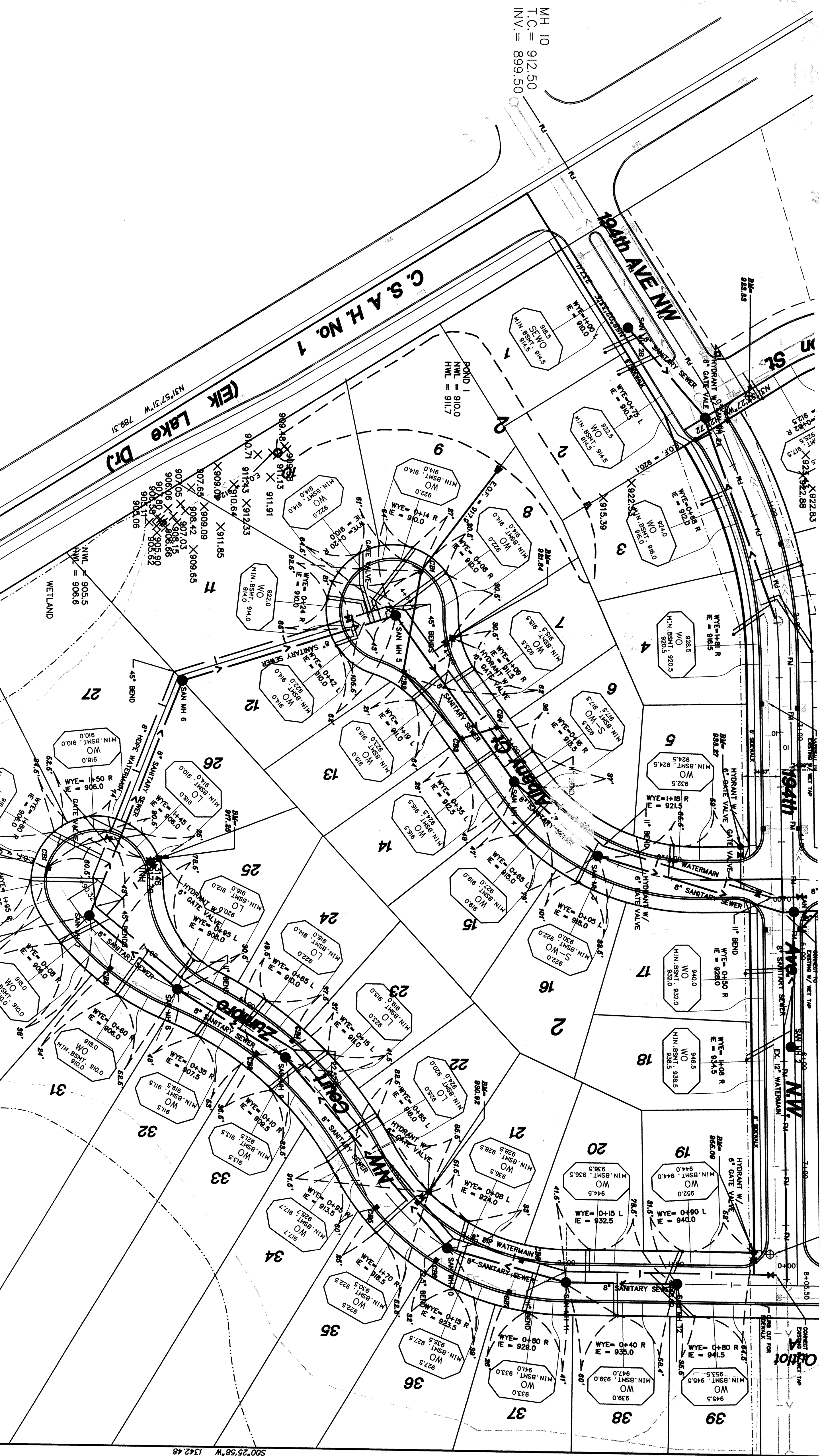
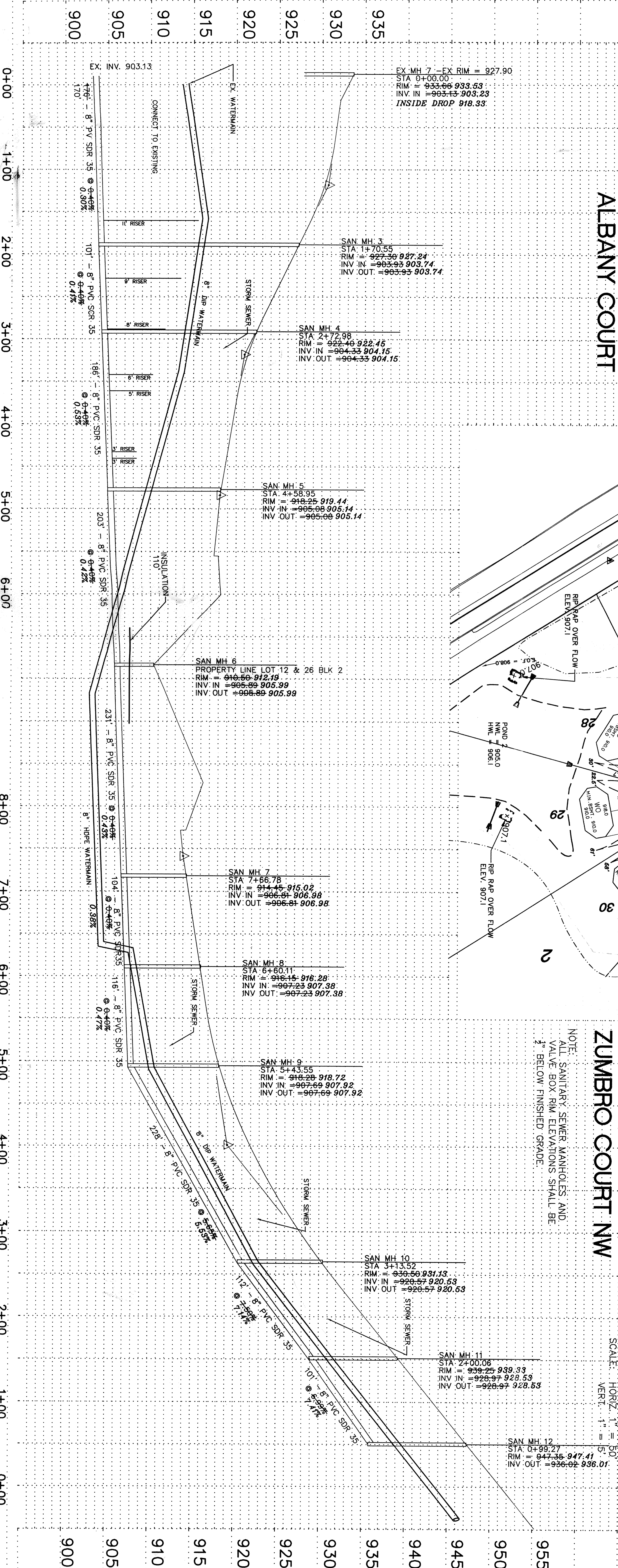
SAN MH 13
STA 0+99.27
RIM = 947.36 947.41
INV. OUT. = 936.02 936.01

ALBANY COURT

ZUMBRO COURT NW

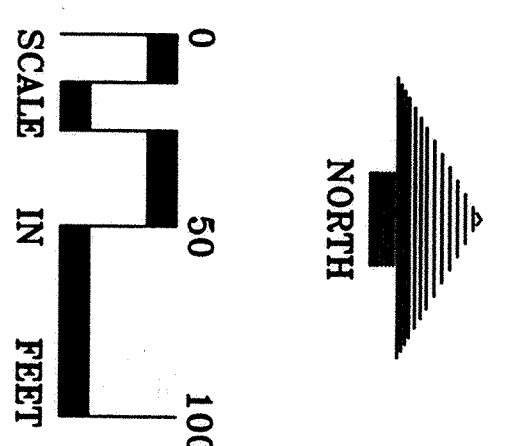
NOTE:
ALL SANITARY SEWER MANHOLES AND
VALVE BOX RIM ELEVATIONS SHALL BE
2" BELOW FINISHED GRADE.

SCALE: HORIZ. 1" = 50'
VERT. 1" = 5'



RECORD DRAWING	
DATE	10/25/11
BY	[Signature]
CHECKED	[Signature]
APPROVED	[Signature]
DESIGNED	[Signature]
DRAWN	[Signature]
IN CHARGE	[Signature]
PROJECT	Sanitary Sewer & Watermain Plan
LOCATION	Albany Court & Zumbro Court NW

MASTER LEGEND	
CONCRETE	[Symbol]
WATER SERVICE	[Symbol]
WATERMAIN	[Symbol]
STORM SEWER	[Symbol]
INSULATION	[Symbol]
WETLAND	[Symbol]
WATERMETER	[Symbol]
VALVE	[Symbol]
MANHOLE	[Symbol]
RISE	[Symbol]
PIPE	[Symbol]
GRASS	[Symbol]
ASPHALT	[Symbol]
CONCRETE	[Symbol]
WATER SERVICE	[Symbol]
WATERMAIN	[Symbol]
STORM SEWER	[Symbol]
INSULATION	[Symbol]
WETLAND	[Symbol]
WATERMETER	[Symbol]
VALVE	[Symbol]
MANHOLE	[Symbol]
RISE	[Symbol]
PIPE	[Symbol]
GRASS	[Symbol]
ASPHALT	[Symbol]



NORDIC HILLS
CITY OF
ELK RIVER
MINNESOTA

CLASSIC & CARPENTER
HOMES, INC.

LOUCKS ASSOCIATES

Sanitary Sewer & Watermain Plan

DATE: 10/25/11

BY: [Signature]

CHECKED: [Signature]

APPROVED: [Signature]

DESIGNED: [Signature]

DRAWN: [Signature]

IN CHARGE: [Signature]

PROJECT: Sanitary Sewer & Watermain Plan

LOCATION: Albany Court & Zumbro Court NW

SCALE: HORIZ. 1" = 50'
VERT. 1" = 5'

C4-1