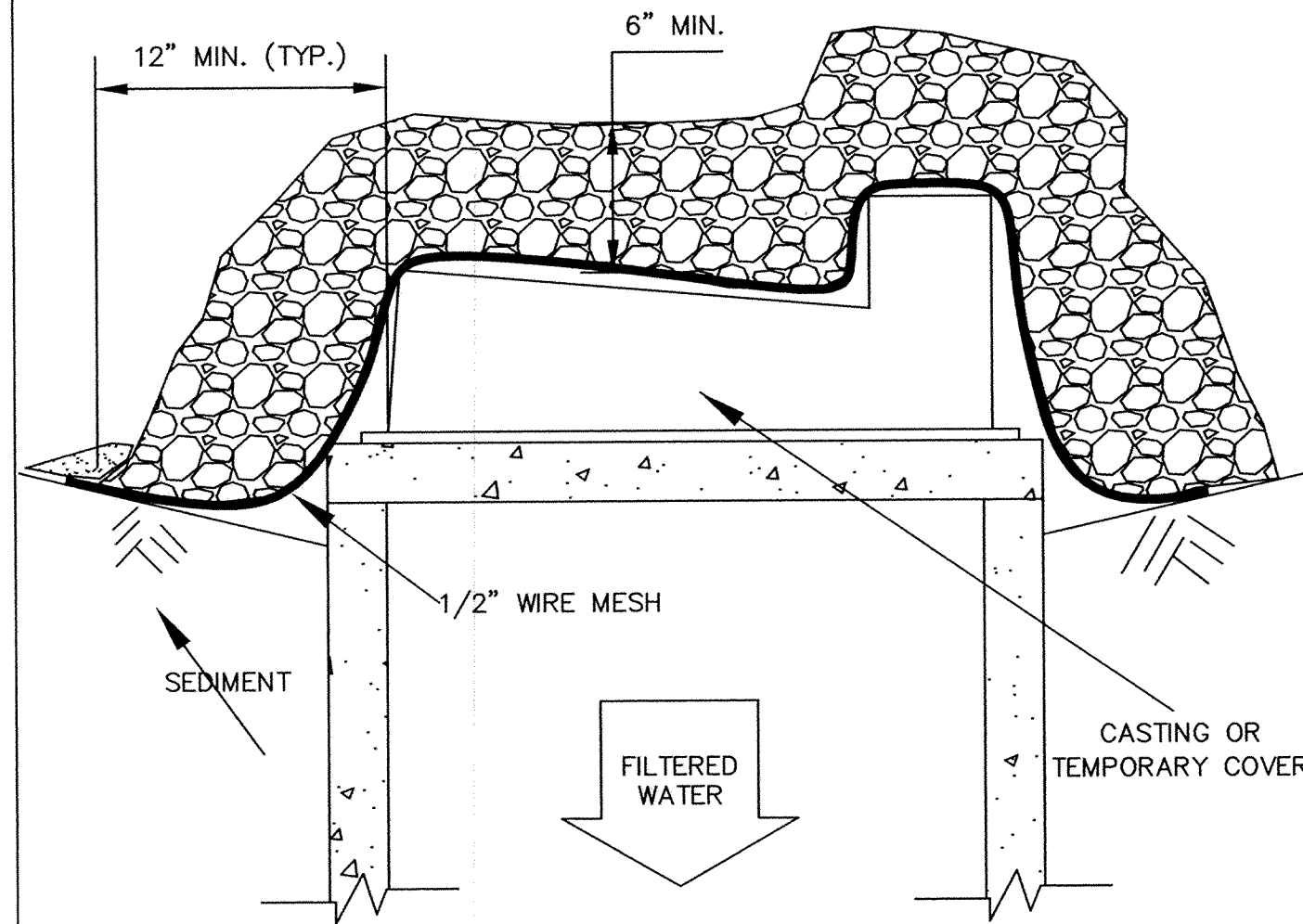
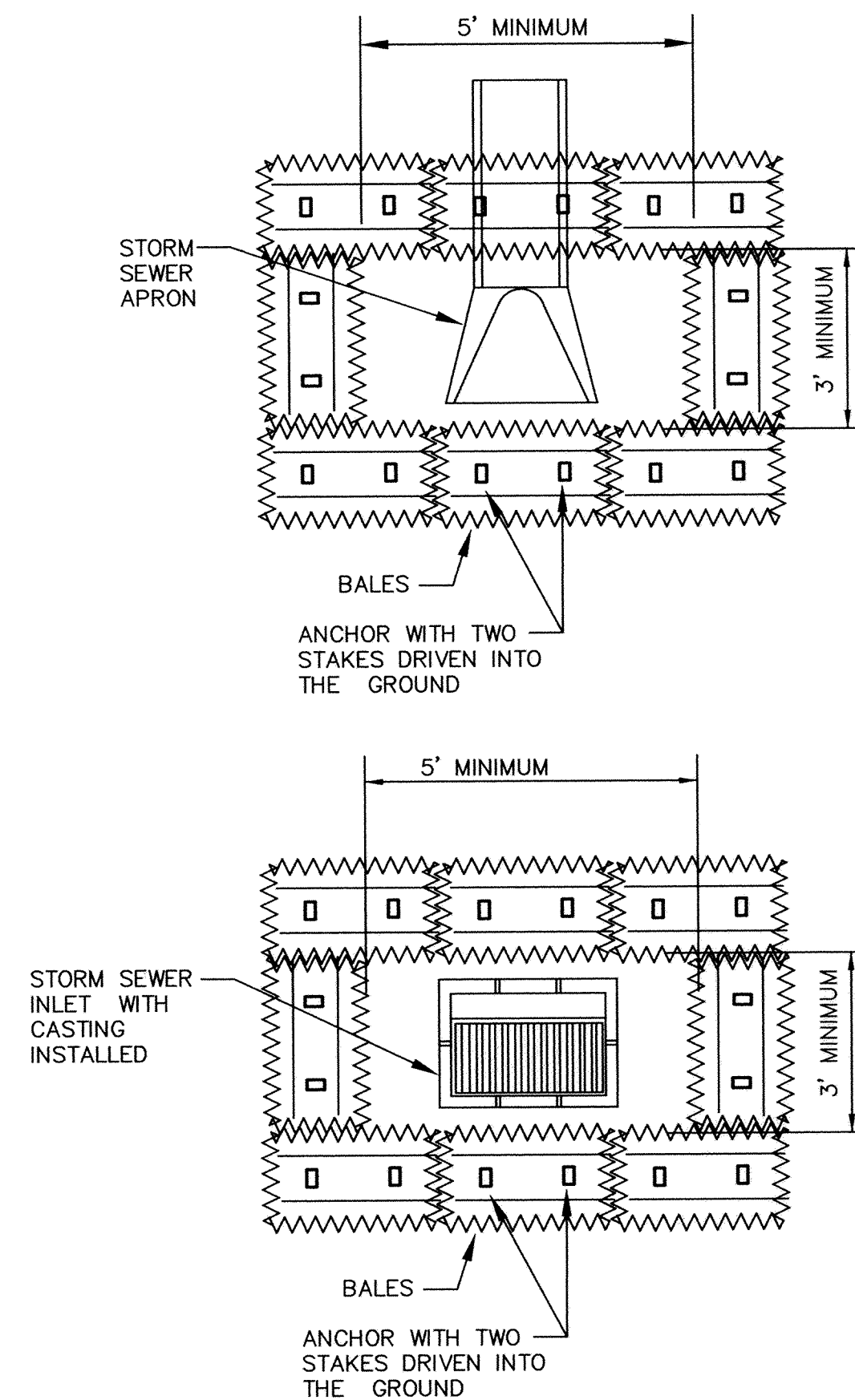


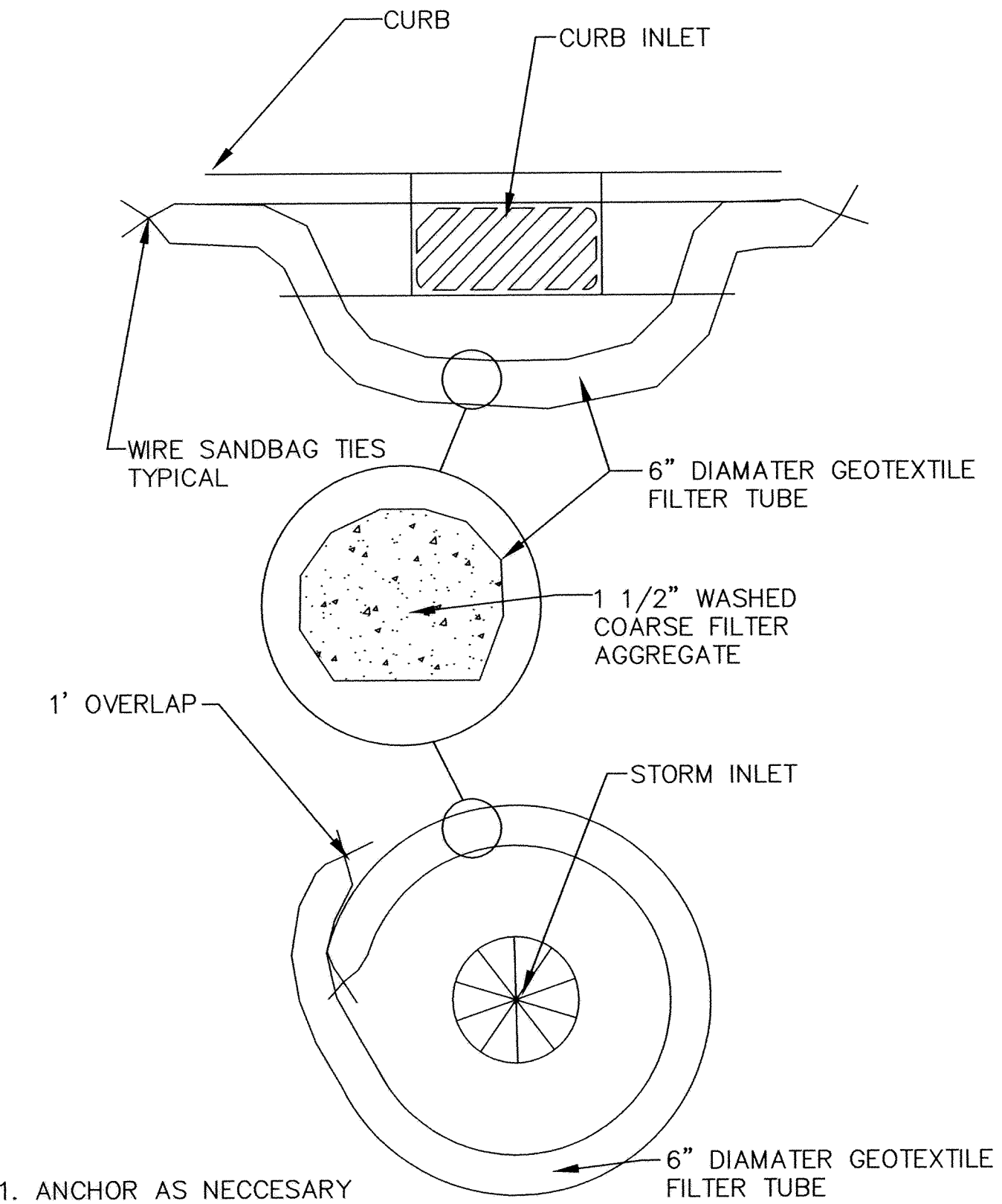
DURING CONSTRUCTION



**AGGREGATE FILTER AT CURB INLET
(TYPE B OR C SPEC. 3891)**



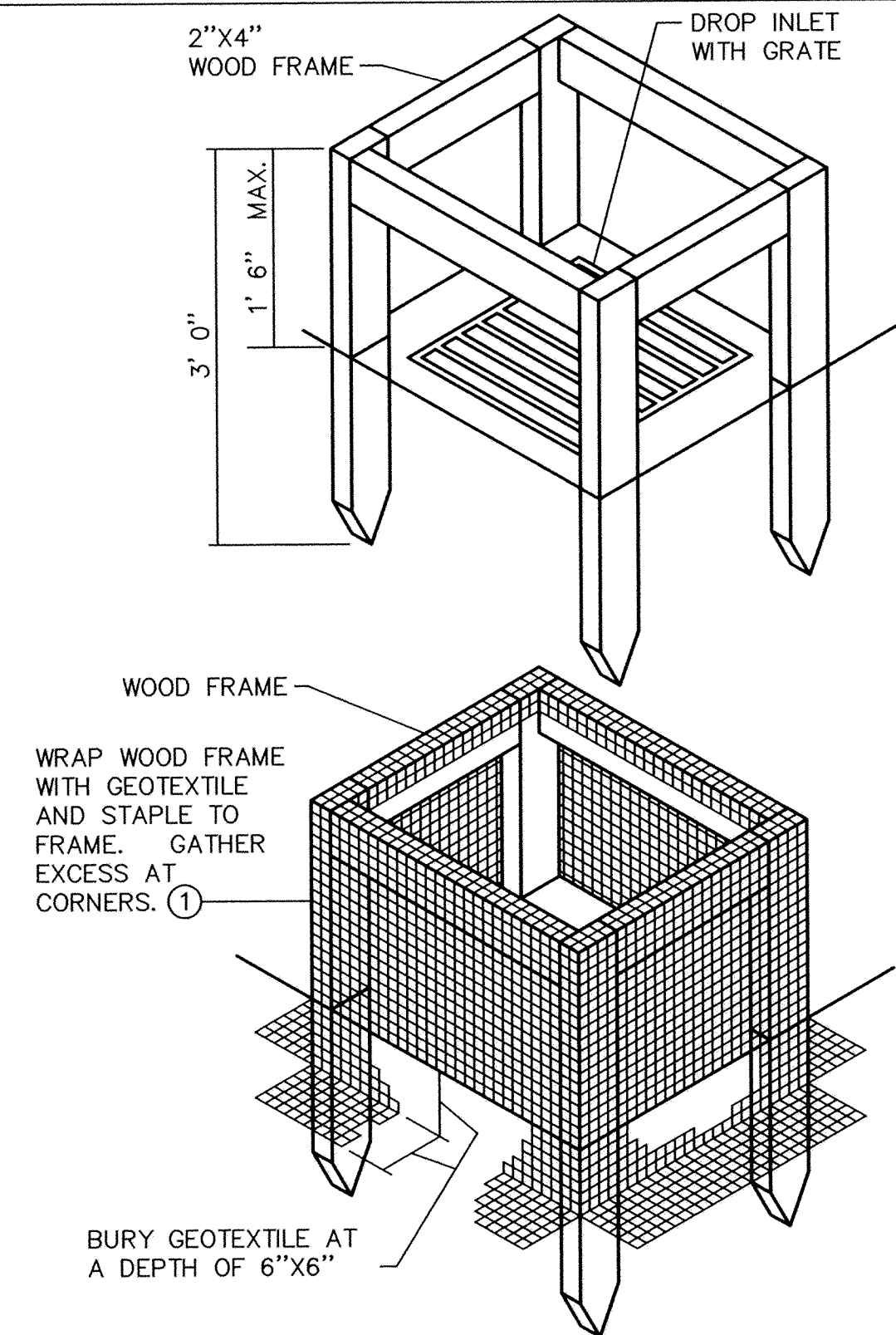
BALE TYPE INLET PROTECTION



1. ANCHOR AS NECESSARY
2. MAY ALSO BE USED AS SLOPE BREAK.
3. PROVIDE SHALLOW DEPRESSION UPSTREAM FOR SEDIMENT STORAGE WHERE POSSIBLE.
4. OVERLAP ENDS OF BAGS MINIMUM OF 1'.

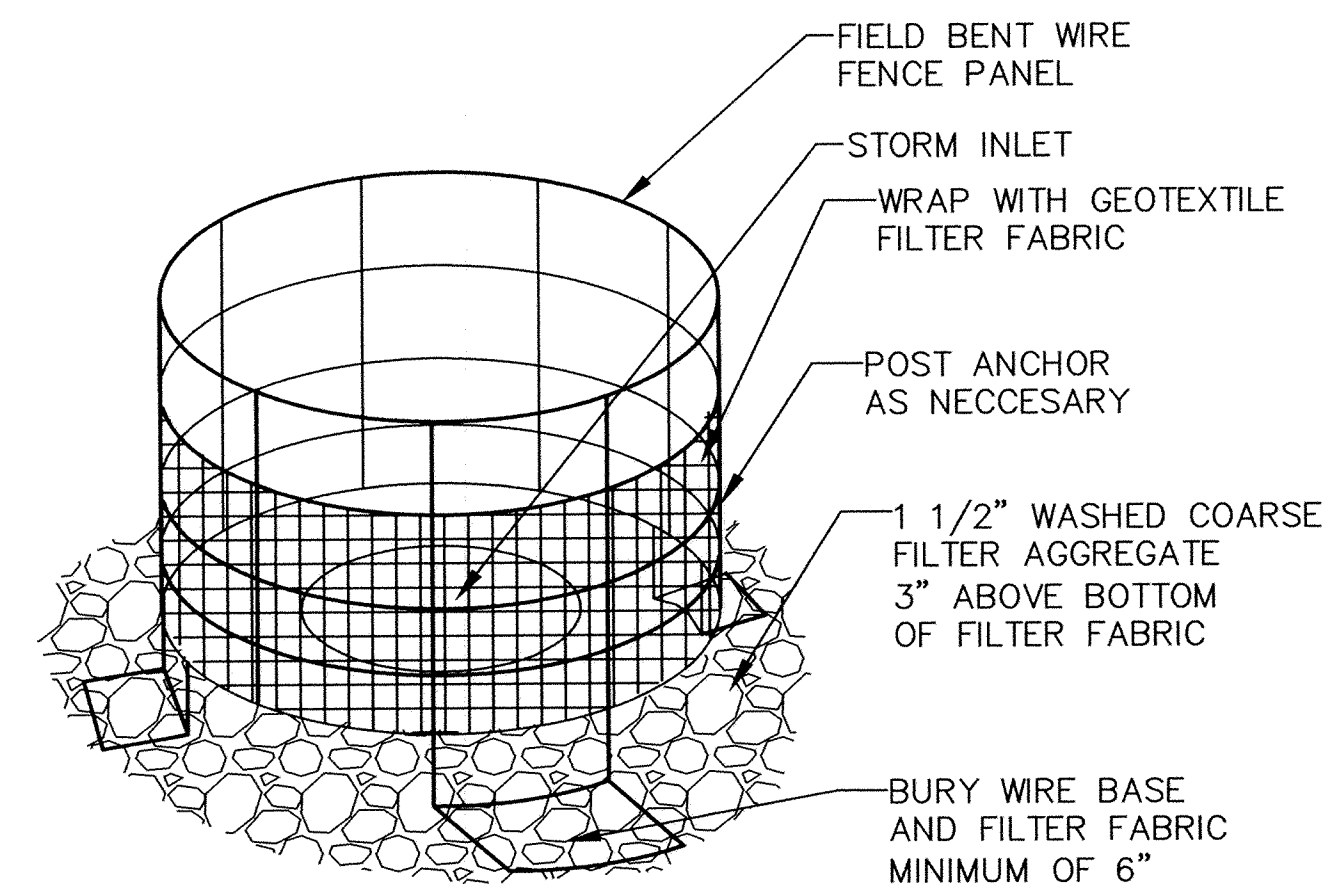
FILTER ROCK LOG

SEDIMENT BARRIER INLET PROTECTION

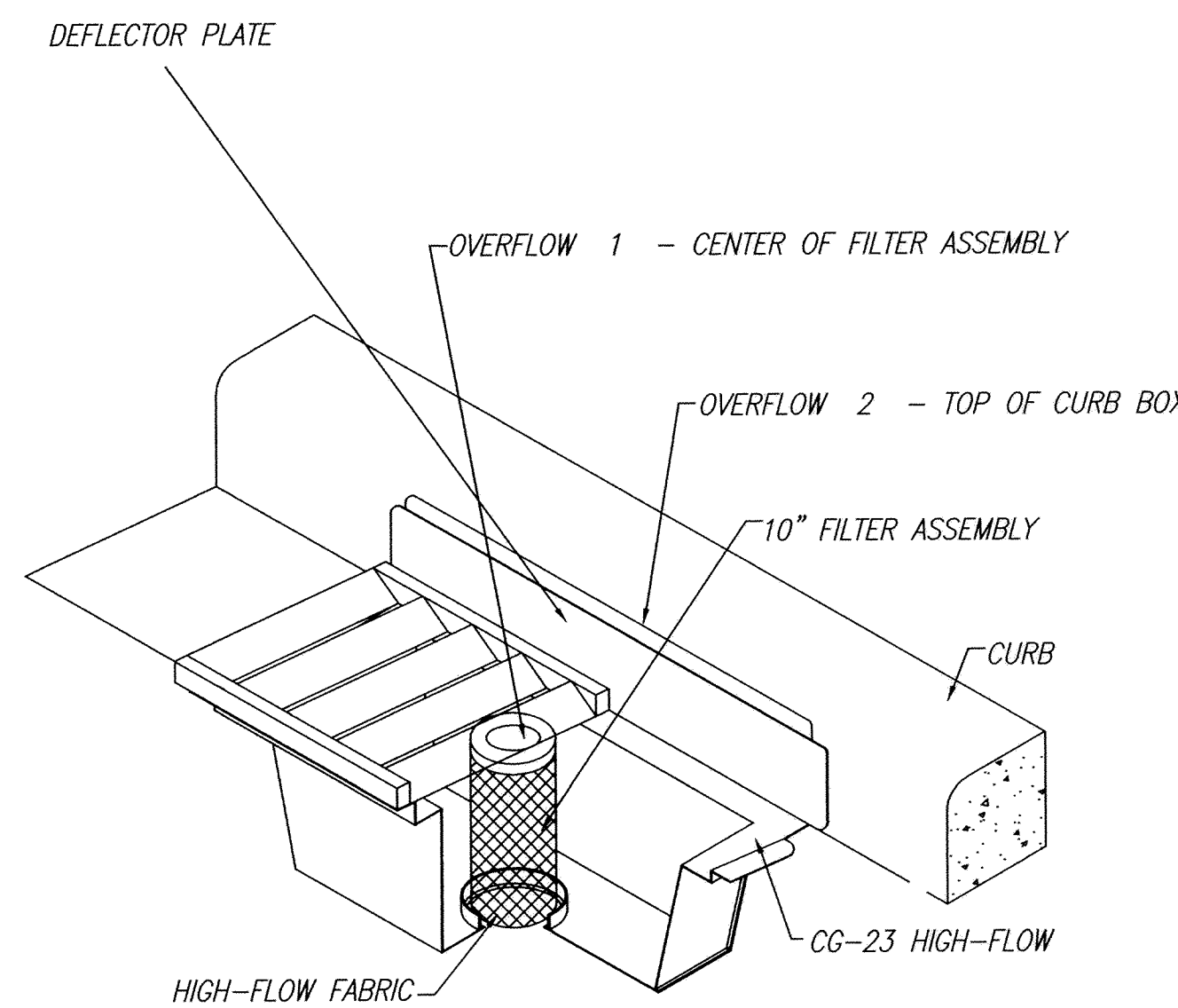


① ALL GEOTEXTILE USED FOR INLET PROTECTION SHALL MEET SPEC. 3886 FOR MACHINE SLICED SILT FENCE
USE WHERE INLET DRAINS AN AREA WITH SLOPES AT 1:3 OR LESS
TYPE A SPEC. 3891

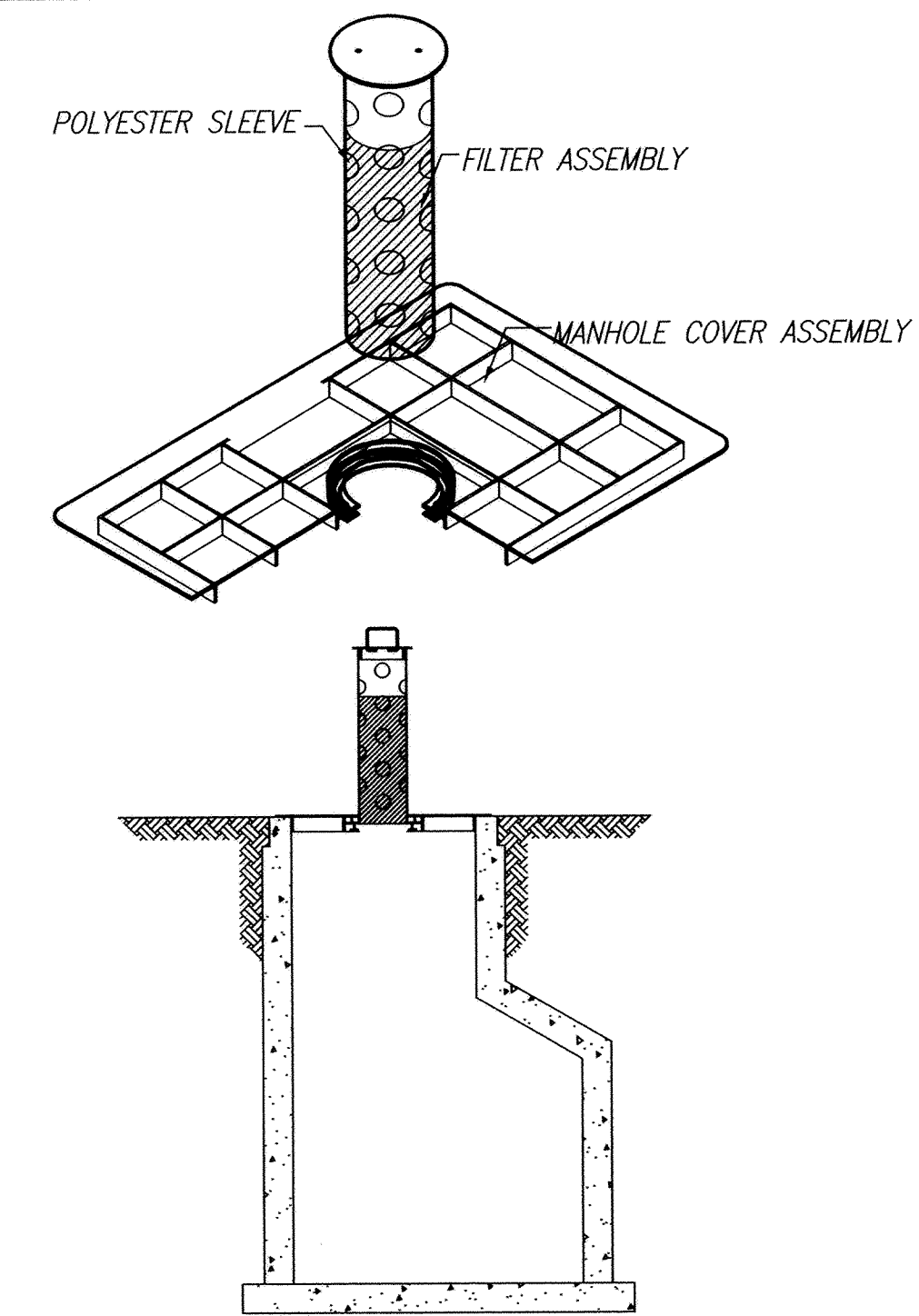
INLET PROTECTION - WOOD FRAME



INLET PROTECTION - WIRE FRAME



INLET PROTECTION - ROAD DRAIN MODEL CG-23



DESIGN LOADS

ALLOWABLE AXLE WEIGHT LOAD	20000 LBS.
SAFETY FACTOR	2 : 1
WATER FLOW RATE (THROUGH POLYESTER SLEEVE)	0.476 cfs @ 3" head
WATER FLOW RATE (w/ NO SLEEVE)	1.113 cfs @ 6" head
	1.575 cfs @ 12" head
MAXIMUM OVERFLOW RATE	1.074 cfs @ 15" head

INLET PROTECTION - ROAD DRAIN MODEL RD-23

NO.	DATE	BY	DESCRIPTION

I HEREBY CERTIFY THAT THIS PLAN, SPECIFICATION, OR REPORT WAS PREPARED BY ME OR UNDER MY DIRECT SUPERVISION AND THAT I AM A FULLY LICENSED PROFESSIONAL ENGINEER UNDER THE LAWS OF THE STATE OF MINNESOTA.

John M. Anderson
JOHN M. ANDERSON
AUG. 12, 2005 25889
DATE 2/2/07 LIC. NO.

**CITY OF ELK RIVER
NORTHSTAR BUSINESS PARK
SWPPP DETAIL
INLET PROTECTION**

BDM
CONSULTING ENGINEERS, PLC
Engineers and Surveyors
4175 Lovell Road, Suite 112
Lexington, MN 55014
Phone: (763) 786-4570
Fax: (763) 786-4574
bdmce.com

DRAWN BY: JLM
CHECKED BY: JMA
DESIGNED BY: JLM
JOB NO. 226035

SHEET **D3** SHEETS **25**