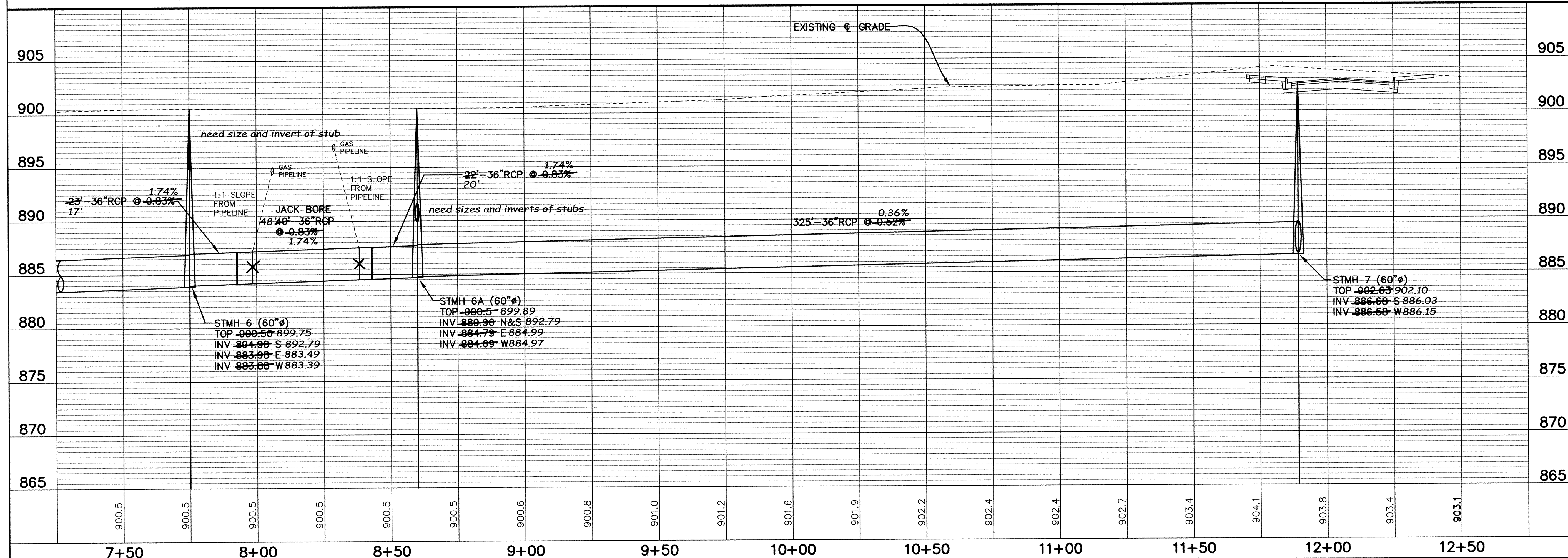


NO.	DATE	BY	DESCRIPTION
1	8-30-05	JL	NOTES FOR CONST

I HEREBY CERTIFY THAT THIS PLAN, SPECIFICATION OR ORDER FOR CONSTRUCTION WAS PREPARED BY ME OR UNDER MY DIRECT SUPERVISION AND THAT I AM A DULY LICENSED PROFESSIONAL ENGINEER UNDER THE LAWS OF THE STATE OF MINNESOTA.

JOHN M. ANDERSON
 AUG. 12, 2005 25889
 DATE 2/2/07 LIC. NO.

**CITY OF ELK RIVER
 NORTHSTAR BUSINESS PARK
 STORM SEWER PLAN AND PROFILE
 LOCATION**



905	905
900	900
895	895
890	890
885	885
880	880
875	875
870	870
865	865

BDM
 CONSULTING ENGINEERS, PLC
 Engineers and Surveyors
 4175 Lovell Road, Suite 112
 Lexington, MN 55014
 Phone: (763) 786-4570
 Fax: (763) 786-4574
 bdmce.com

DRAWN BY: JL
 CHECKED BY: JMA
 DESIGNED BY: JL
 JOB NO. 226035

SHEET **ST 4** SHEETS **25**

SAECO PRODUCTS • NEW HAVEN, MINNESOTA
 REORDER BY PART NUMBER 8882
 SAECO PRODUCTS • NEW HAVEN, MINNESOTA
 REORDER BY PART NUMBER 8882
 SAECO PRODUCTS • NEW HAVEN, MINNESOTA
 REORDER BY PART NUMBER 8882
 SAECO PRODUCTS • NEW HAVEN, MINNESOTA
 REORDER BY PART NUMBER 8882