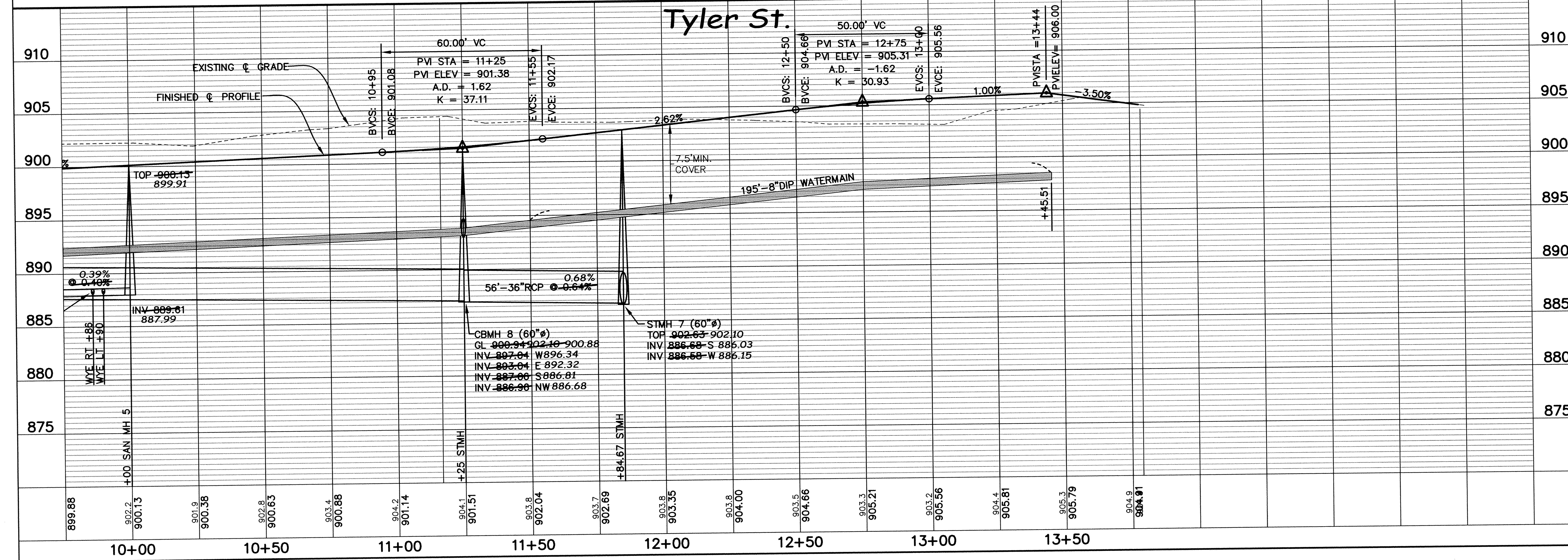


NO.	DATE	BY	DESCRIPTION
1	8-30-05	JL	NOTES FOR CONST

I HEREBY CERTIFY THAT THIS PLAN, SPECIFICATION, OR REPORT WAS PREPARED BY ME OR UNDER MY DIRECT SUPERVISION AND THAT I AM A DULY LICENSED PROFESSIONAL ENGINEER UNDER THE LAWS OF THE STATE OF MINNESOTA.

*John M. Anderson*  
**JOHN M. ANDERSON**  
 AUG. 12, 2005 25889  
 DATE 8/23/07 LIC. NO.

**CITY OF ELK RIVER**  
**NORTHSTAR BUSINESS PARK**  
**PLAN AND PROFILE**  
**STREET A**



910	
905	
900	
895	
890	
885	
880	
875	

899.88	
902.2	
900.13	
901.9	
900.38	
902.8	
900.63	
903.4	
900.88	
904.2	
901.14	
904.1	
901.51	
903.8	
902.04	
903.7	
902.69	
903.8	
903.35	
904.00	
903.5	
904.66	
903.3	
905.21	
903.2	
905.56	
904.4	
905.61	
905.3	
905.79	
904.9	
904.81	

10+00	10+50	11+00	11+50	12+00	12+50	13+00	13+50
-------	-------	-------	-------	-------	-------	-------	-------

SHEET	SHEETS
<b>P5</b>	<b>25</b>

DRAWN BY: JL  
 CHECKED BY: JMA  
 DESIGNED BY: JL  
 JOB NO. 226035

**BDM**  
 CONSULTING ENGINEERS, PLC  
 Engineers and Surveyors  
 4175 Lovell Road, Suite 112  
 Lexington, MN 55014  
 Phone: (763) 786-4570  
 Fax: (763) 786-4574  
 bdmce.com