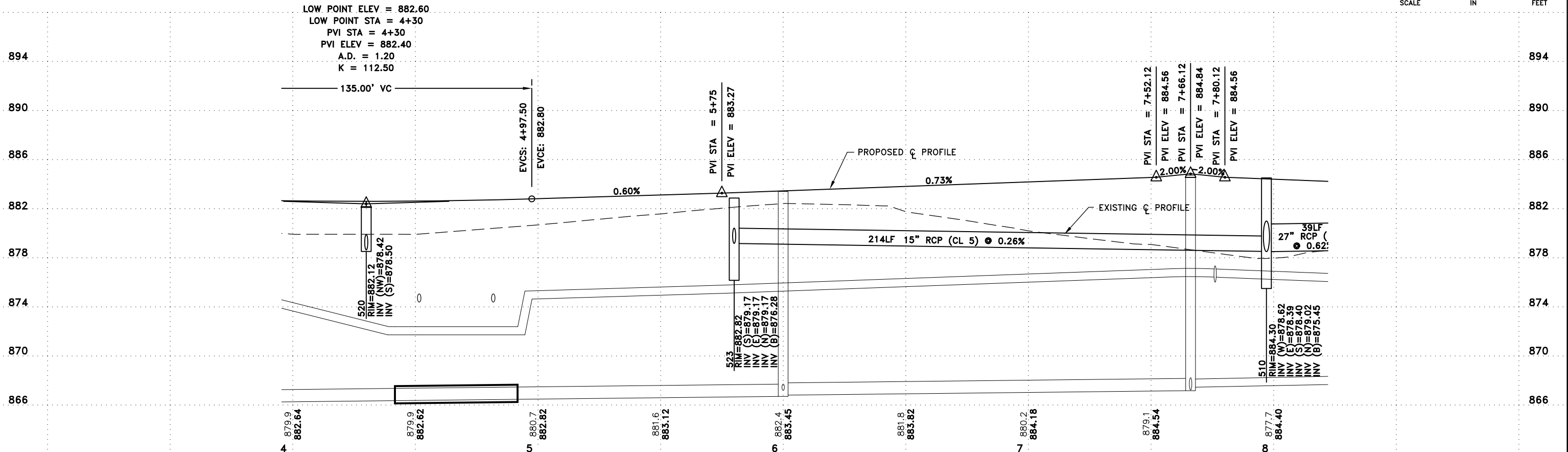


RECORD PLAN
 This drawing is furnished for informational purposes only and is not intended to be complete and all-encompassing in displaying all prevailing conditions

HORIZONTAL CURVE DATA						
PI STA	PI OFFSET	PI NORTHING	PI EASTING	DELTA	RADIUS	LENGTH
6+06.07	6.35	210283.34	587272.72	16°35'47"	600.00	173.80

LOW POINT ELEV = 882.60
 LOW POINT STA = 4+30
 PVI STA = 4+30
 PVI ELEV = 882.40
 A.D. = 1.20
 K = 112.50



Nov 26, 2013 10:05am K:\cad_eng\PROJECTS\MUNICIPAL\ER301AB\dwg\ER301 STREET AND STORM.dwg

DATE	REVISION
5/4/12	ISSUED FOR COUNCIL APPROVAL
5/21/12	ISSUED FOR CONSTRUCTION
11/15/13	RECORD PLAN

I hereby certify that this plan, specification, or report was prepared by me or under my direct supervision and that I am a duly Licensed Professional Engineer under the laws of the State of Minnesota.
 CRAIG J. JOHNSON, P.E.
 Date 5/4/12 Lic. No. 23461

DESIGNED BY:
TAE
 DRAWN BY:
DMS
 CHECKED BY:
CJJ



Hakanson Anderson
 Civil Engineers and Land Surveyors
 3601 Thurston Ave., Anoka, Minnesota 55303
 763-427-5860 FAX 763-427-0520
 www.hakanson-anderson.com

NATURES EDGE BUSINESS CENTER
 PHASE 1

STREET AND STORM SEWER PLAN
 170TH LANE
 CITY OF ELK RIVER, MINNESOTA

SHEET
26
 OF
34
 SHEETS

ER301