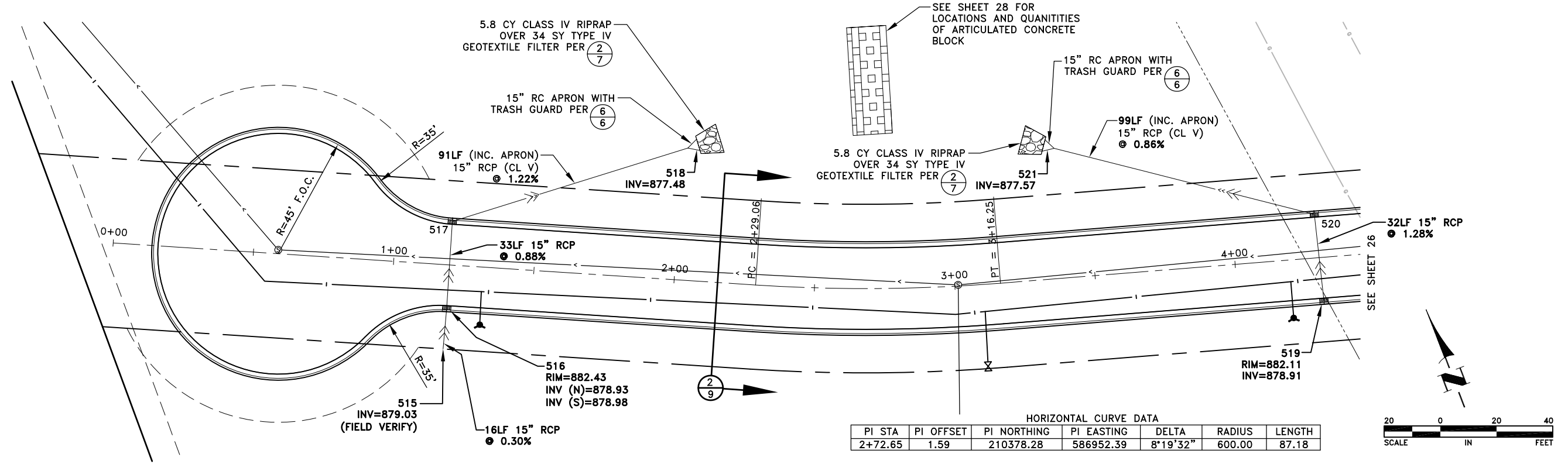
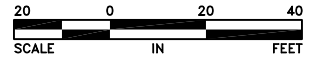


Nov 26, 2013 10:04am K:\cad\_eng\PROJECTS\MUNICIPAL\ER301AB\dwg\ER301 STREET AND STORM.dwg



HORIZONTAL CURVE DATA

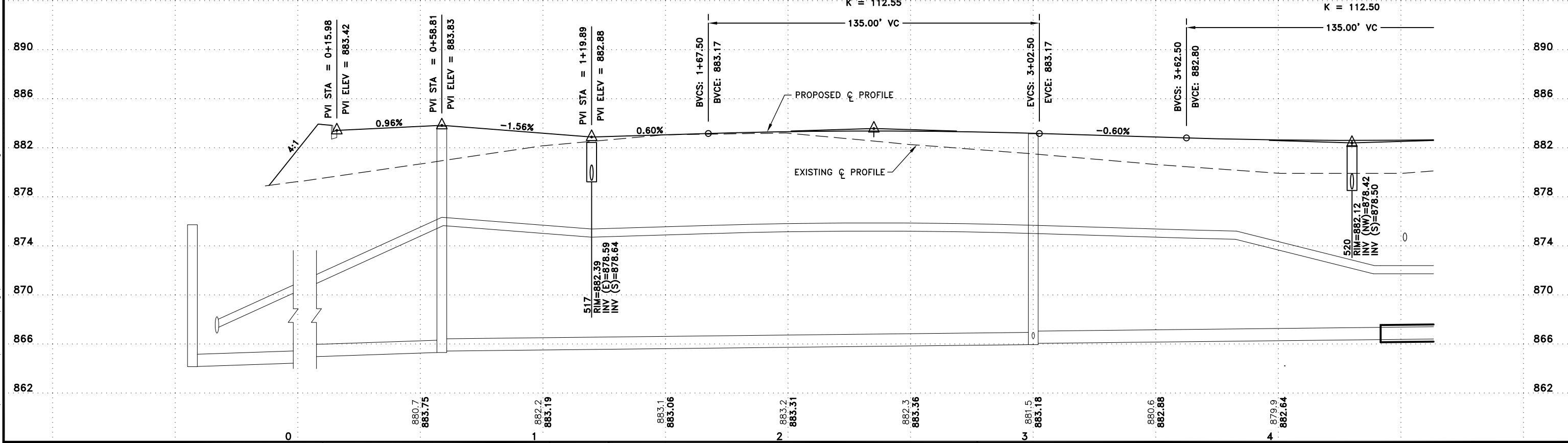
PI STA	PI OFFSET	PI NORTHING	PI EASTING	DELTA	RADIUS	LENGTH
2+72.65	1.59	210378.28	586952.39	8°19'32"	600.00	87.18



HIGH POINT ELEV = 883.37  
HIGH POINT STA = 2+34.97  
PVI STA = 2+35  
PVI ELEV = 883.57  
A.D. = -1.20  
K = 112.55

LOW POINT ELEV = 882.60  
LOW POINT STA = 4+30  
PVI STA = 4+30  
PVI ELEV = 882.40  
A.D. = 1.20  
K = 112.50

**RECORD PLAN**  
This drawing is furnished for informational purposes only and is not intended to be complete and all-encompassing in displaying all prevailing conditions



DATE	REVISION
5/4/12	ISSUED FOR COUNCIL APPROVAL
5/21/12	ISSUED FOR CONSTRUCTION
11/15/13	RECORD PLAN

I hereby certify that this plan, specification, or report was prepared by me or under my direct supervision and that I am a duly Licensed Professional Engineer under the laws of the State of Minnesota.

*PAIG J. JOHNSON, P.E.*  
Date 5/4/12 Lic. No. 23461

DESIGNED BY: TAE  
DRAWN BY: DMS  
CHECKED BY: CJJ



**Hakanson Anderson**  
Civil Engineers and Land Surveyors  
3601 Thurston Ave., Anoka, Minnesota 55303  
763-427-5860 FAX 763-427-0520  
www.hakanson-anderson.com

**NATURES EDGE BUSINESS CENTER  
PHASE 1**

**STREET AND STORM SEWER PLAN**  
170TH LANE  
CITY OF ELK RIVER, MINNESOTA

SHEET 25 OF 34 SHEETS