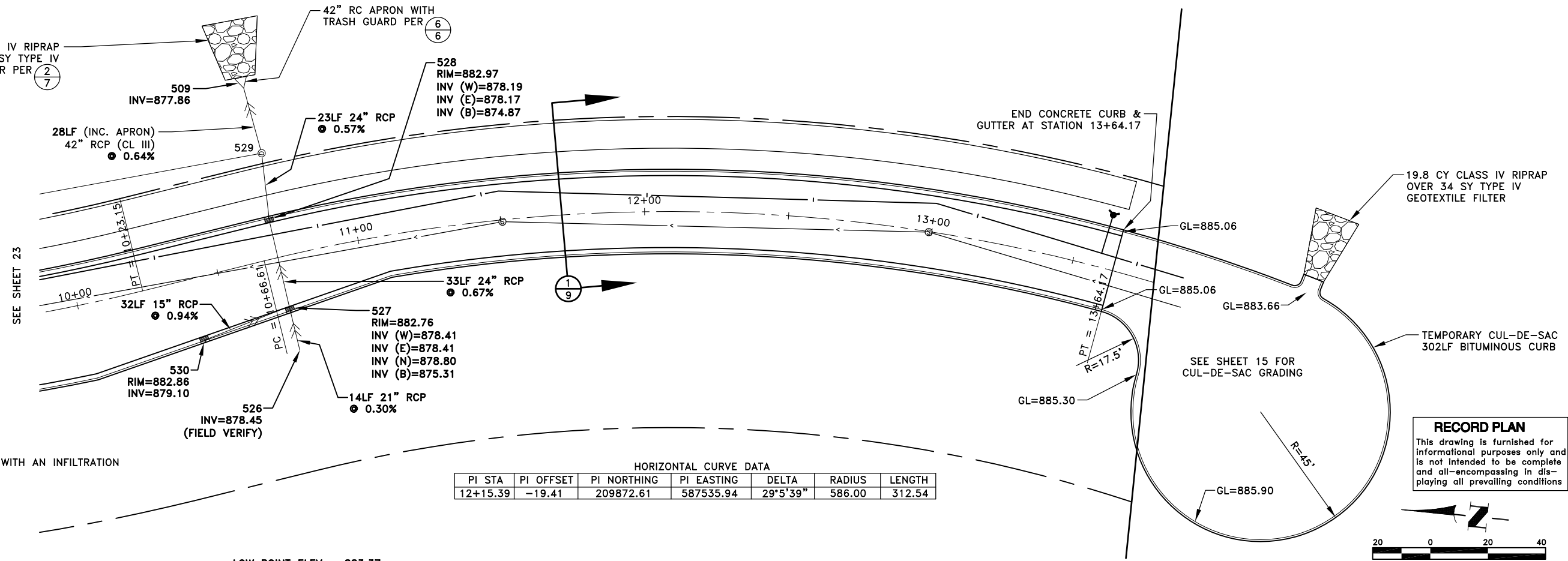


21.7 CY CLASS IV RIPRAP
OVER 34 SY TYPE IV
GEOTEXTILE FILTER PER $\frac{2}{7}$

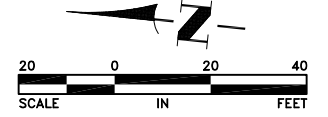


REFERENCE NOTES:
① ALL PERF CPP SHALL BE CONSTRUCTED WITH AN INFILTRATION TRENCH PER $\frac{1}{7}$

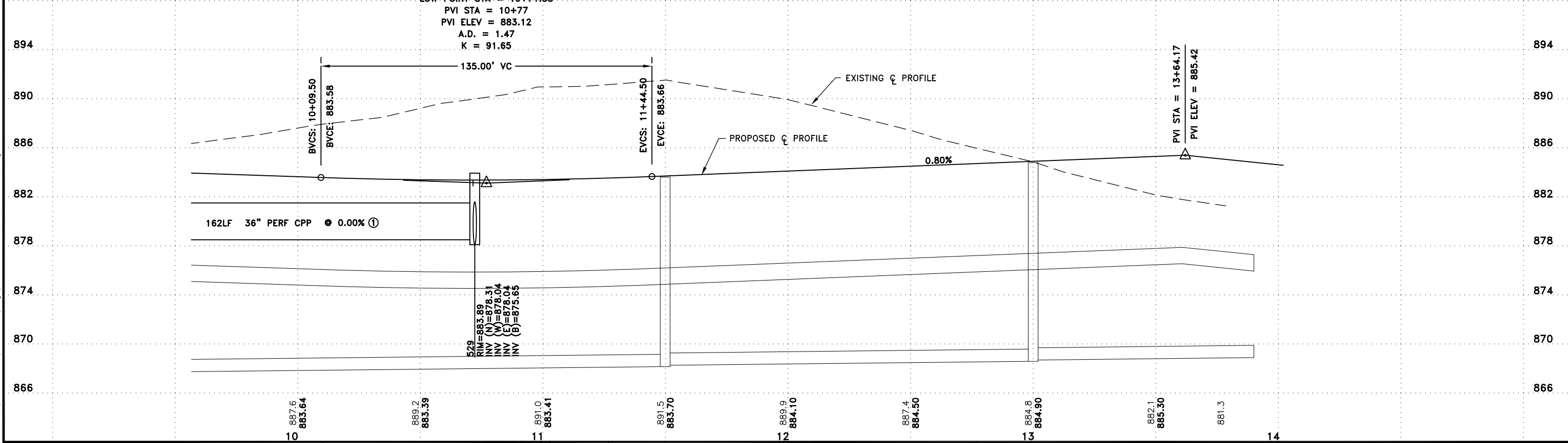
HORIZONTAL CURVE DATA

PI STA	PI OFFSET	PI NORTHING	PI EASTING	DELTA	RADIUS	LENGTH
12+15.39	-19.41	209872.61	587535.94	29°5'39"	586.00	312.54

RECORD PLAN
This drawing is furnished for informational purposes only and is not intended to be complete and all-encompassing in displaying all prevailing conditions



LOW POINT ELEV = 883.37
LOW POINT STA = 10+71.55
PVI STA = 10+77
PVI ELEV = 883.12
A.D. = 1.47
K = 91.65



Nov 25, 2013 - 2:41pm K:\cad_eng\PROJECTS\MUNICIPAL\ER301AB\dwg\ER301 STREET AND STORM.dwg

DATE	REVISION
5/4/12	ISSUED FOR COUNCIL APPROVAL
5/21/12	ISSUED FOR CONSTRUCTION
11/15/13	RECORD PLAN

I hereby certify that this plan, specification, or report was prepared by me or under my direct supervision and that I am a duly Licensed Professional Engineer under the laws of the State of Minnesota.
Craig J. Johnson, P.E.
Date 5/4/12 Lic. No. 23461

DESIGNED BY: TAE
DRAWN BY: DMS
CHECKED BY: CJJ



Hakanson Anderson
Civil Engineers and Land Surveyors
3601 Thurston Ave., Anoka, Minnesota 55303
763-427-5860 FAX 763-427-0520
www.hakanson-anderson.com

**NATURES EDGE BUSINESS CENTER
PHASE 1**

STREET AND STORM SEWER PLAN
TWIN LAKES ROAD
CITY OF ELK RIVER, MINNESOTA

SHEET 24 OF 34 SHEETS