

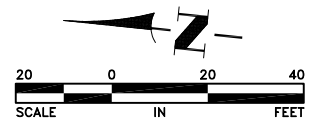
HORIZONTAL CURVE DATA						
PI STA	PI OFFSET	PI NORTHING	PI EASTING	DELTA	RADIUS	LENGTH
5+61.30	-4.60	210514.51	587433.03	10°33'16"	1080.00	198.95
9+17.53	9.20	210156.94	587433.58	19°42'47"	614.00	211.25

24 SF TRUNCATED DOMES
PER MnDOT STANDARD
PLATE 7038 AND SHEET 31

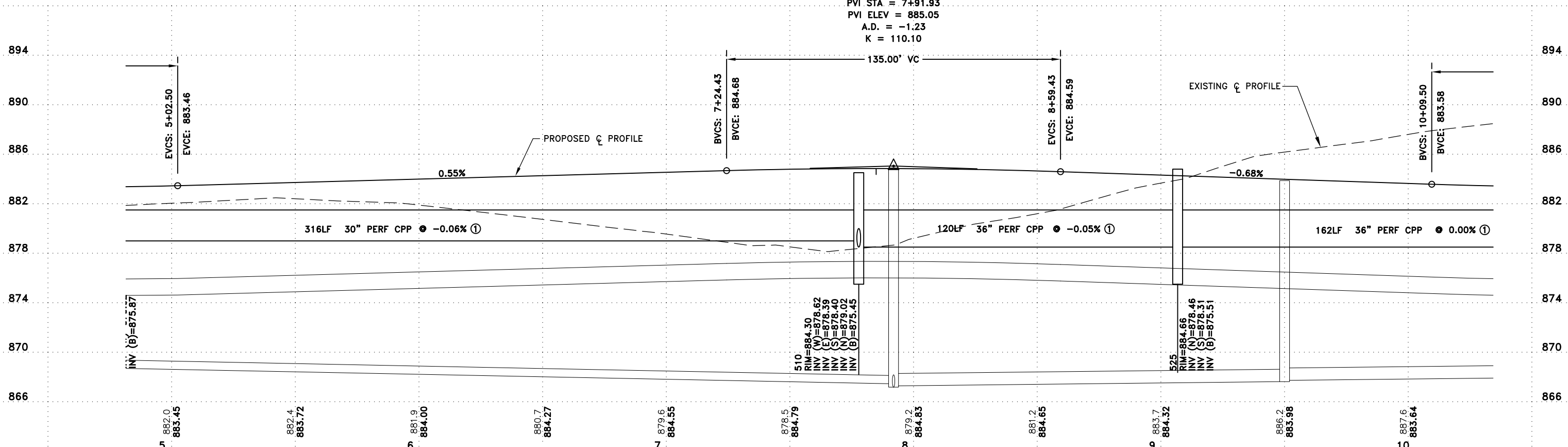
24 SF TRUNCATED DOMES
PER MnDOT STANDARD
PLATE 7038 AND SHEET 31

REFERENCE NOTES:
① ALL PERF CPP SHALL BE CONSTRUCTED WITH AN INFILTRATION TRENCH PER ①

RECORD PLAN
This drawing is furnished for informational purposes only and is not intended to be complete and all-encompassing in displaying all prevailing conditions.



HIGH POINT ELEV = 884.85
HIGH POINT STA = 7+84.89
PVI STA = 7+91.93
PVI ELEV = 885.05
A.D. = -1.23
K = 110.10



Nov 26, 2013 10:04am K:\cad_eng\PROJECTS\MUNICIPAL\ER301AB.dwg\ER301 STREET AND STORM.dwg

DATE	REVISION
5/4/12	ISSUED FOR COUNCIL APPROVAL
5/21/12	ISSUED FOR CONSTRUCTION
11/15/13	RECORD PLAN

I hereby certify that this plan, specification, or report was prepared by me or under my direct supervision and that I am a duly Licensed Professional Engineer under the laws of the State of Minnesota.

Craig J. Jochum, P.E.
 Date 5/4/12 Lic. No. 23461

DESIGNED BY: TAE
 DRAWN BY: DMS
 CHECKED BY: CJJ



Hakanson Anderson
 Civil Engineers and Land Surveyors
 3601 Thurston Ave., Anoka, Minnesota 55303
 763-427-5860 FAX 763-427-0520
 www.hakanson-anderson.com

NATURES EDGE BUSINESS CENTER
 PHASE 1

STREET AND STORM SEWER PLAN
 TWIN LAKES ROAD
 CITY OF ELK RIVER, MINNESOTA

SHEET 23 OF 34 SHEETS