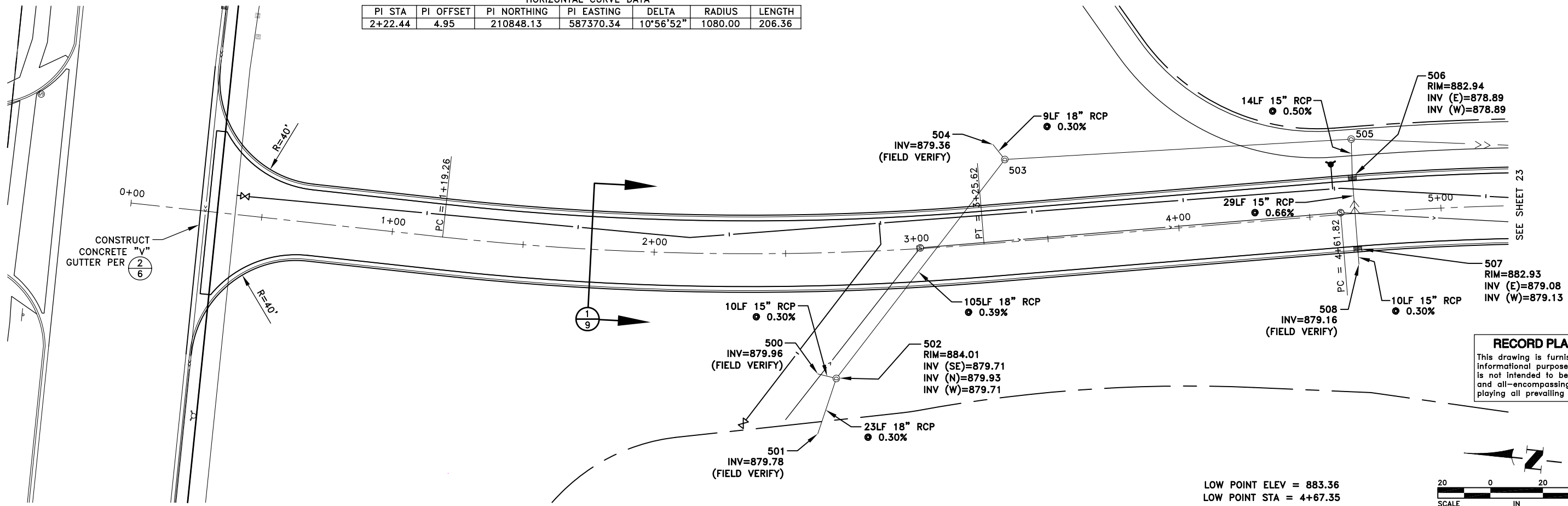
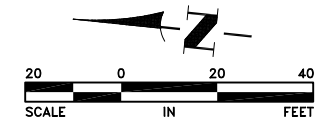


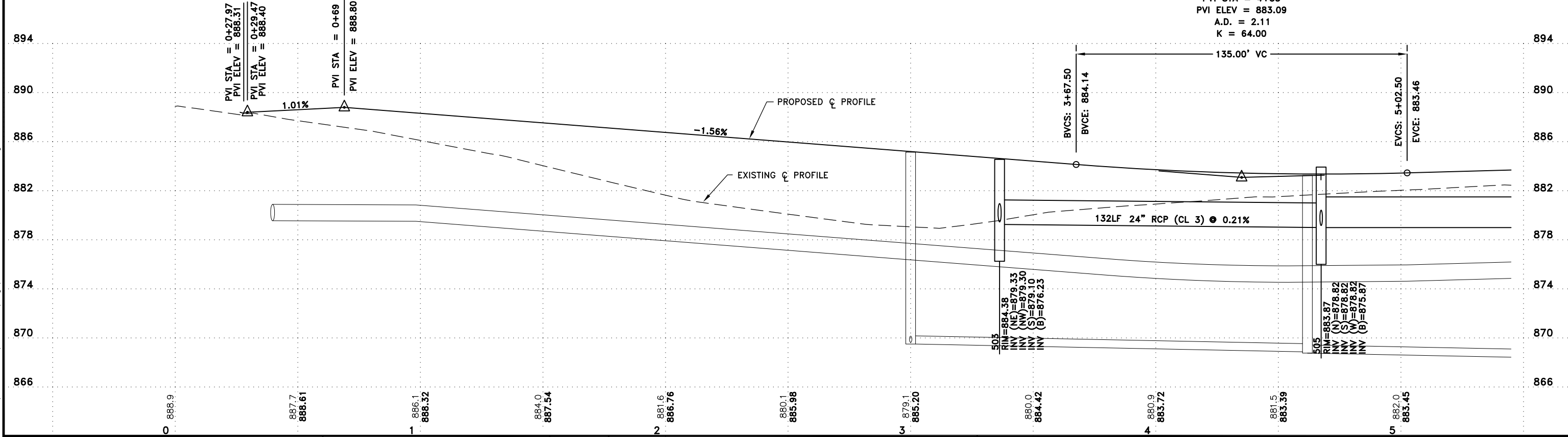
HORIZONTAL CURVE DATA						
PI STA	PI OFFSET	PI NORTHING	PI EASTING	DELTA	RADIUS	LENGTH
2+22.44	4.95	210848.13	587370.34	10°56'52"	1080.00	206.36



**RECORD PLAN**  
 This drawing is furnished for informational purposes only and is not intended to be complete and all-encompassing in displaying all prevailing conditions.



LOW POINT ELEV = 883.36  
 LOW POINT STA = 4+67.35  
 PVI STA = 4+35  
 PVI ELEV = 883.09  
 A.D. = 2.11  
 K = 64.00



Nov 26, 2013 10:03am K:\cad\_eng\PROJECTS\MUNICIPAL\ER301AB.dwg\ER301 STREET AND STORM.dwg

DATE	REVISION
5/4/12	ISSUED FOR COUNCIL APPROVAL
5/21/12	ISSUED FOR CONSTRUCTION
11/15/13	RECORD PLAN

I hereby certify that this plan, specification, or report was prepared by me or under my direct supervision and that I am a duly Licensed Professional Engineer under the laws of the State of Minnesota.  
  
 Date 5/4/12      Lic. No. 23461

DESIGNED BY:	TAE
DRAWN BY:	DMS
CHECKED BY:	CJJ



**Hakanson Anderson**  
 Civil Engineers and Land Surveyors  
 3601 Thurston Ave., Anoka, Minnesota 55303  
 763-427-5860 FAX 763-427-0520  
 www.hakanson-anderson.com

**NATURES EDGE BUSINESS CENTER  
 PHASE 1**

**STREET AND STORM SEWER PLAN**  
 TWIN LAKES ROAD  
 CITY OF ELK RIVER, MINNESOTA

SHEET	22
OF	34
SHEETS	