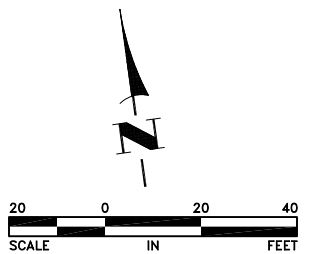
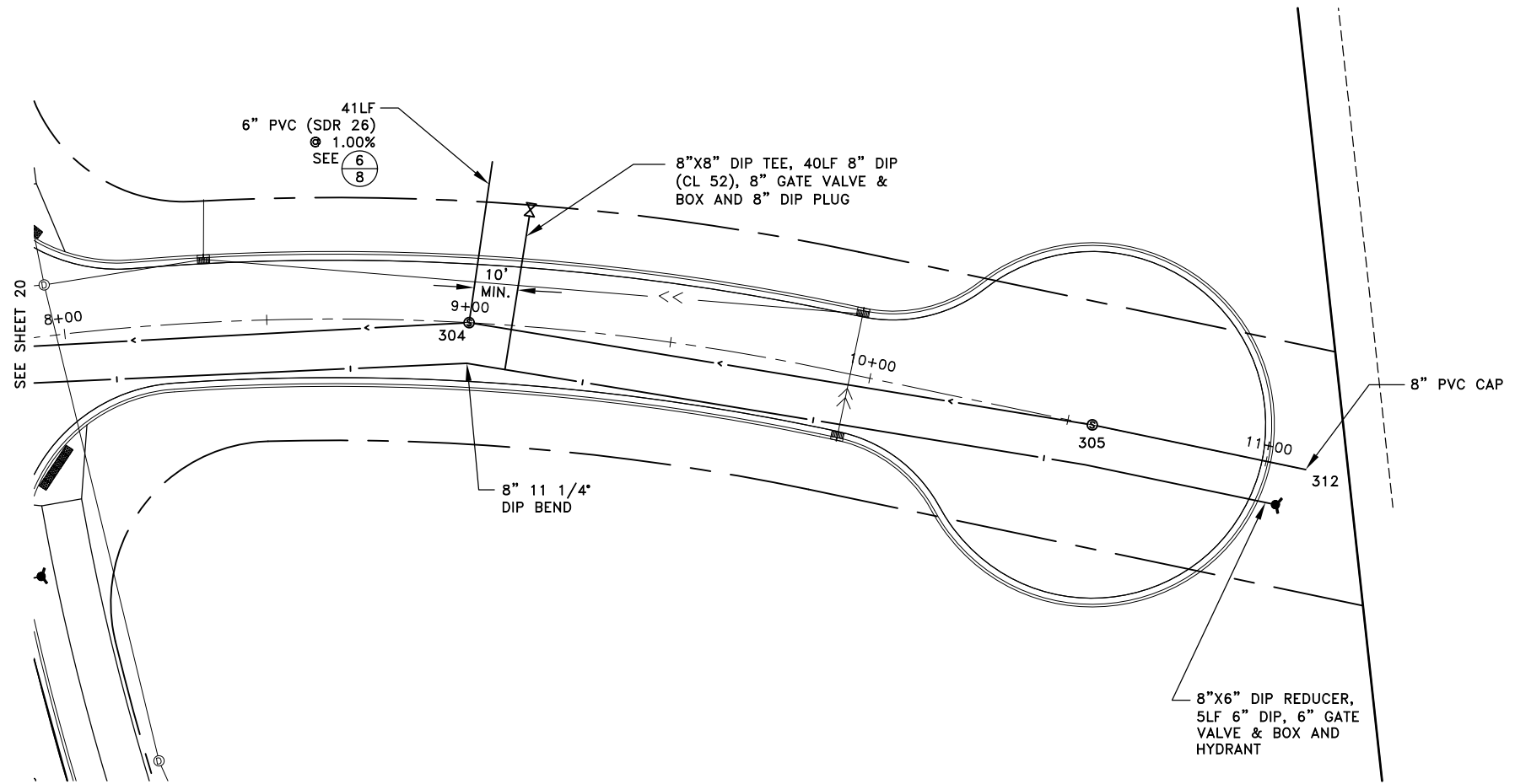
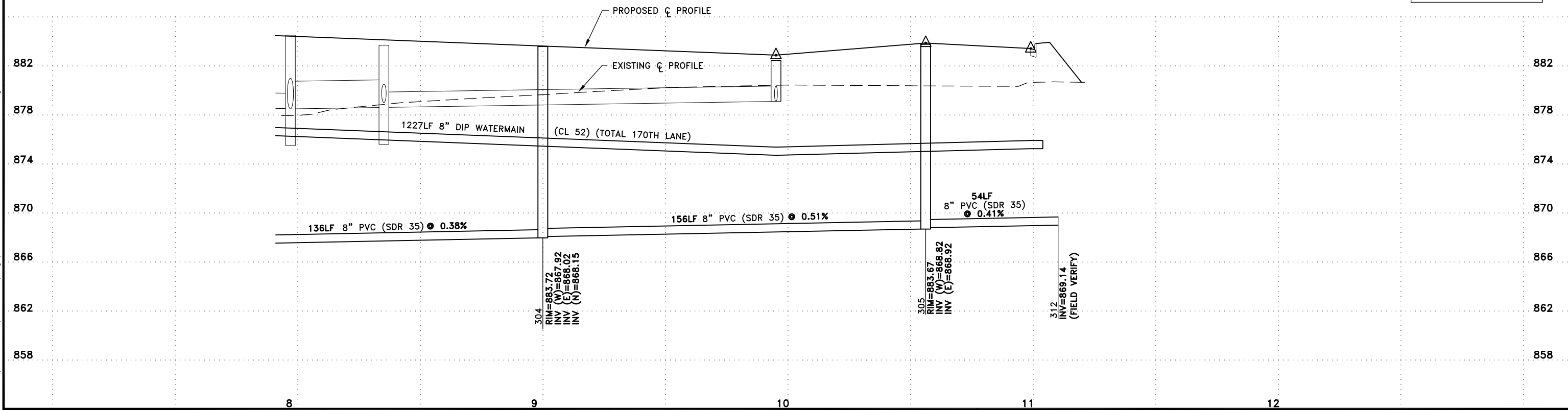


Nov 26, 2013 10:03am K:\cad\eng\PROJECTS\MUNICIPAL\ER301AB\dwg\ER301 SANITARY AND WATERMAIN.dwg



RECORD PLAN
 This drawing is furnished for informational purposes only and is not intended to be complete and all-encompassing in displaying all prevailing conditions



DATE	REVISION
5/4/12	ISSUED FOR COUNCIL APPROVAL
5/21/12	ISSUED FOR CONSTRUCTION
11/15/13	RECORD PLAN

I hereby certify that this plan, specification, or report was prepared by me or under my direct supervision and that I am a duly Licensed Professional Engineer under the laws of the State of Minnesota.

Craig J. Johnson
 CRAIG J. JOHNSON, P.E.
 Date 5/4/12 Lic. No. 23461

DESIGNED BY: TAE
 DRAWN BY: DMS
 CHECKED BY: CJJ



Hakanson Anderson
 Civil Engineers and Land Surveyors
 3601 Thurston Ave., Anoka, Minnesota 55303
 763-427-5860 FAX 763-427-0520
 www.hakanson-anderson.com

**NATURES EDGE BUSINESS CENTER
 PHASE 1**

SANITARY SEWER AND WATERMAIN PLAN
 170TH LANE
 CITY OF ELK RIVER, MINNESOTA

SHEET 21 OF 34 SHEETS