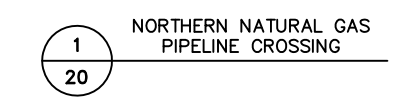
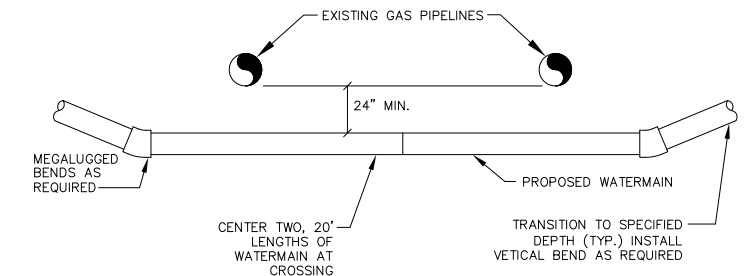
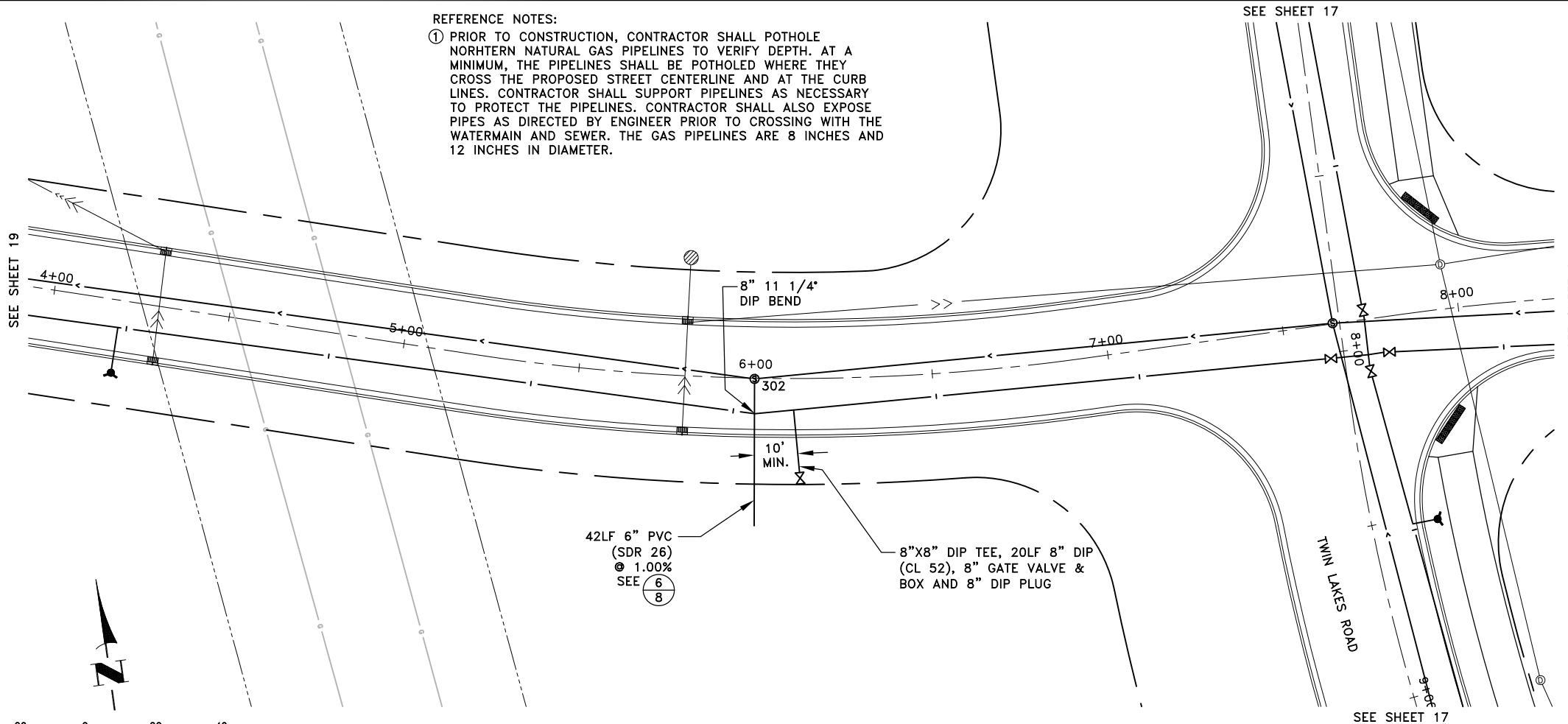


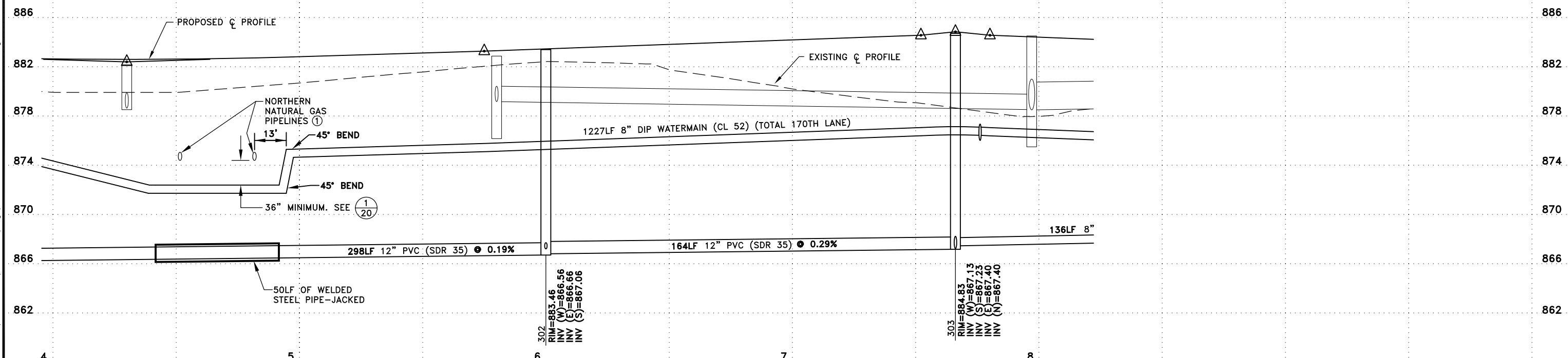
REFERENCE NOTES:

① PRIOR TO CONSTRUCTION, CONTRACTOR SHALL POT-HOLE NORTHERN NATURAL GAS PIPELINES TO VERIFY DEPTH. AT A MINIMUM, THE PIPELINES SHALL BE POT-HOLED WHERE THEY CROSS THE PROPOSED STREET CENTERLINE AND AT THE CURB LINES. CONTRACTOR SHALL SUPPORT PIPELINES AS NECESSARY TO PROTECT THE PIPELINES. CONTRACTOR SHALL ALSO EXPOSE PIPES AS DIRECTED BY ENGINEER PRIOR TO CROSSING WITH THE WATERMAIN AND SEWER. THE GAS PIPELINES ARE 8 INCHES AND 12 INCHES IN DIAMETER.

SEE SHEET 17



**RECORD PLAN**  
This drawing is furnished for informational purposes only and is not intended to be complete and all-encompassing in displaying all prevailing conditions



Nov 26, 2013 10:02am K:\cad\_eng\PROJECTS\MUNICIPAL\ER301\AB\ER301\_SANITARY AND WATERMAIN.dwg

DATE	REVISION
5/4/12	ISSUED FOR COUNCIL APPROVAL
5/21/12	ISSUED FOR CONSTRUCTION
6/5/12	ADDED WELDED STEEL PIPE-JACKED AND REVISED NOTE
11/15/13	RECORD PLAN

I hereby certify that this plan, specification, or report was prepared by me or under my direct supervision and that I am a duly Licensed Professional Engineer under the laws of the State of Minnesota.

*Craig J. Johnson, P.E.*  
Date 5/4/12 Lic. No. 23461

DESIGNED BY: TAE  
DRAWN BY: DMS  
CHECKED BY: CJJ



**Hakanson Anderson**  
Civil Engineers and Land Surveyors  
3601 Thurston Ave., Anoka, Minnesota 55303  
763-427-5860 FAX 763-427-0520  
www.hakanson-anderson.com

NATURES EDGE BUSINESS CENTER  
PHASE 1

SANITARY SEWER AND WATERMAIN PLAN  
170TH LANE  
CITY OF ELK RIVER, MINNESOTA

SHEET 20 OF 34 SHEETS