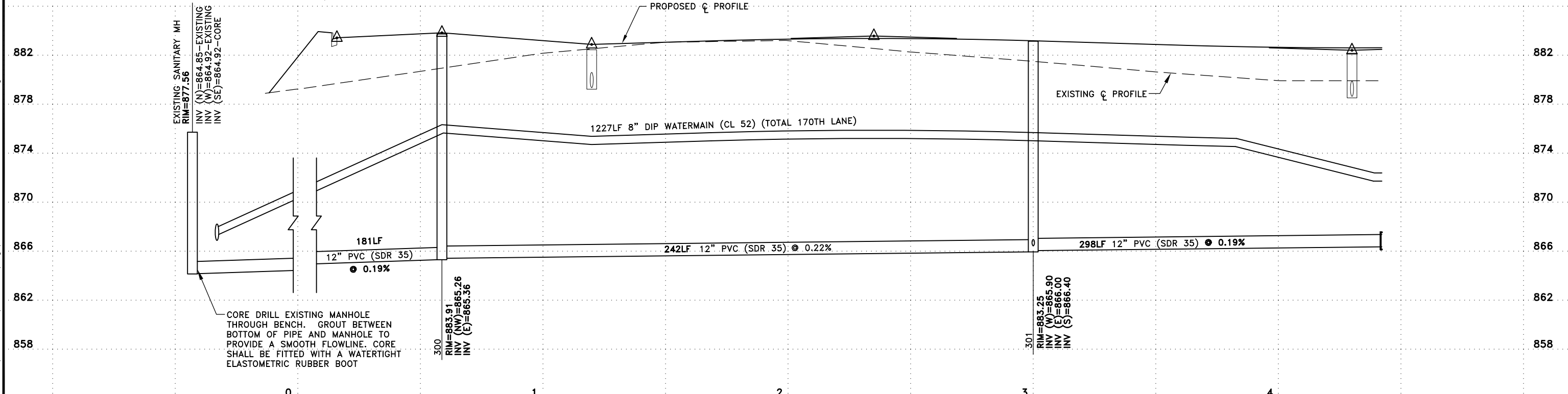
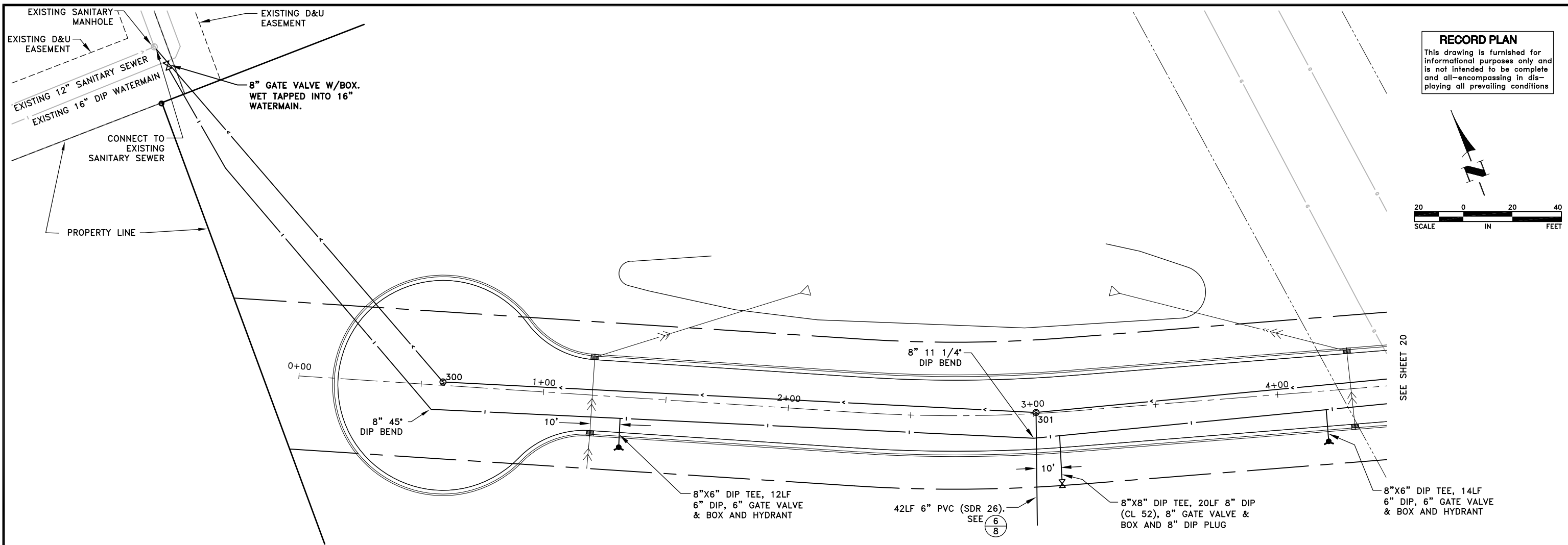
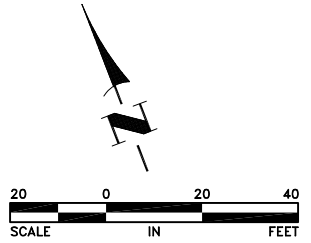


**RECORD PLAN**  
 This drawing is furnished for informational purposes only and is not intended to be complete and all-encompassing in displaying all prevailing conditions.



K:\cad\_eng\PROJECTS\MUNICIPAL\ER301AB\dwg\ER301 SANITARY AND WATERMAIN.dwg

DATE	REVISION
5/4/12	ISSUED FOR COUNCIL APPROVAL
5/21/12	ISSUED FOR CONSTRUCTION
11/15/13	RECORD PLAN

I hereby certify that this plan, specification, or report was prepared by me or under my direct supervision and that I am a duly Licensed Professional Engineer under the laws of the State of Minnesota.

*Raig J. Johnson*  
 RAIG J. JOHNSON, P.E.  
 Date 5/4/12 Lic. No. 23461

DESIGNED BY: TAE  
 DRAWN BY: DMS  
 CHECKED BY: CJJ



**Hakanson Anderson**  
 Civil Engineers and Land Surveyors  
 3601 Thurston Ave., Anoka, Minnesota 55303  
 763-427-5860 FAX 763-427-0520  
 www.hakanson-anderson.com

NATURES EDGE BUSINESS CENTER  
 PHASE 1

SANITARY SEWER AND WATERMAIN PLAN  
 170TH LANE  
 CITY OF ELK RIVER, MINNESOTA

SHEET 19 OF 34 SHEETS