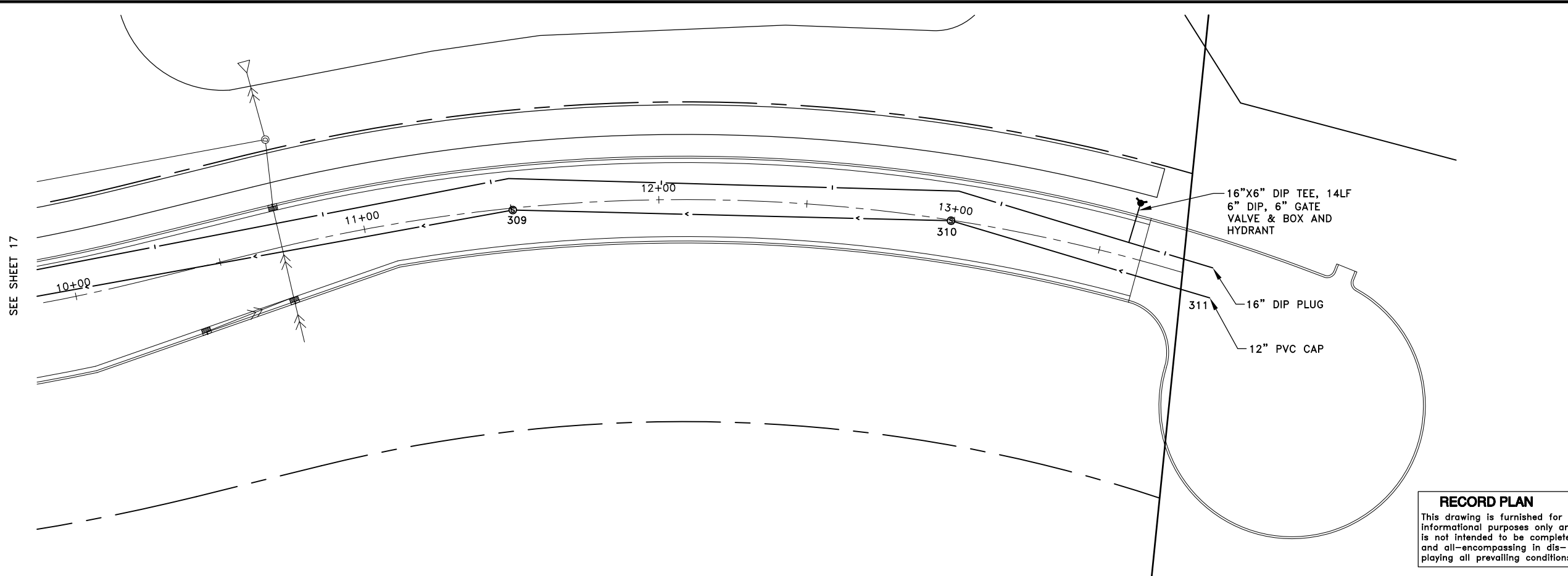
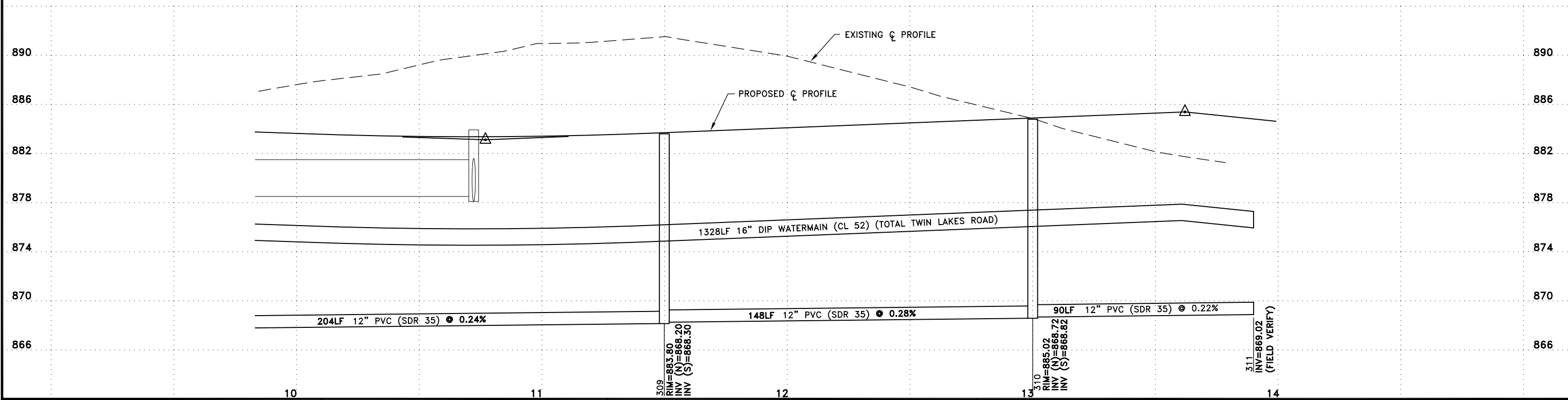
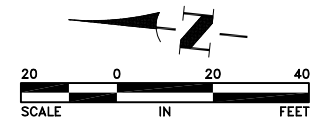


Nov 26, 2013 - 9:33am K:\cod_eng\PROJECTS\MUNICIPAL\ER301AB\dwg\ER301 SANITARY AND WATERMAIN.dwg



RECORD PLAN
 This drawing is furnished for informational purposes only and is not intended to be complete and all-encompassing in displaying all prevailing conditions



| DATE | REVISION |
|----------|-----------------------------|
| 5/4/12 | ISSUED FOR COUNCIL APPROVAL |
| 5/21/12 | ISSUED FOR CONSTRUCTION |
| 11/15/13 | RECORD PLAN |

I hereby certify that this plan, specification, or report was prepared by me or under my direct supervision and that I am a duly Licensed Professional Engineer under the laws of the State of Minnesota.

Craig J. Johnson
 CRAIG J. JOHNSON, P.E.
 Date 5/4/12 Lic. No. 23461

DESIGNED BY: TAE
 DRAWN BY: DMS
 CHECKED BY: CJJ



Hakanson Anderson
 Civil Engineers and Land Surveyors
 3601 Thurston Ave., Anoka, Minnesota 55303
 763-427-5860 FAX 763-427-0520
 www.hakanson-anderson.com

NATURES EDGE BUSINESS CENTER
 PHASE 1

SANITARY SEWER AND WATERMAIN PLAN
 TWIN LAKES ROAD
 CITY OF ELK RIVER, MINNESOTA

SHEET 18 OF 34 SHEETS