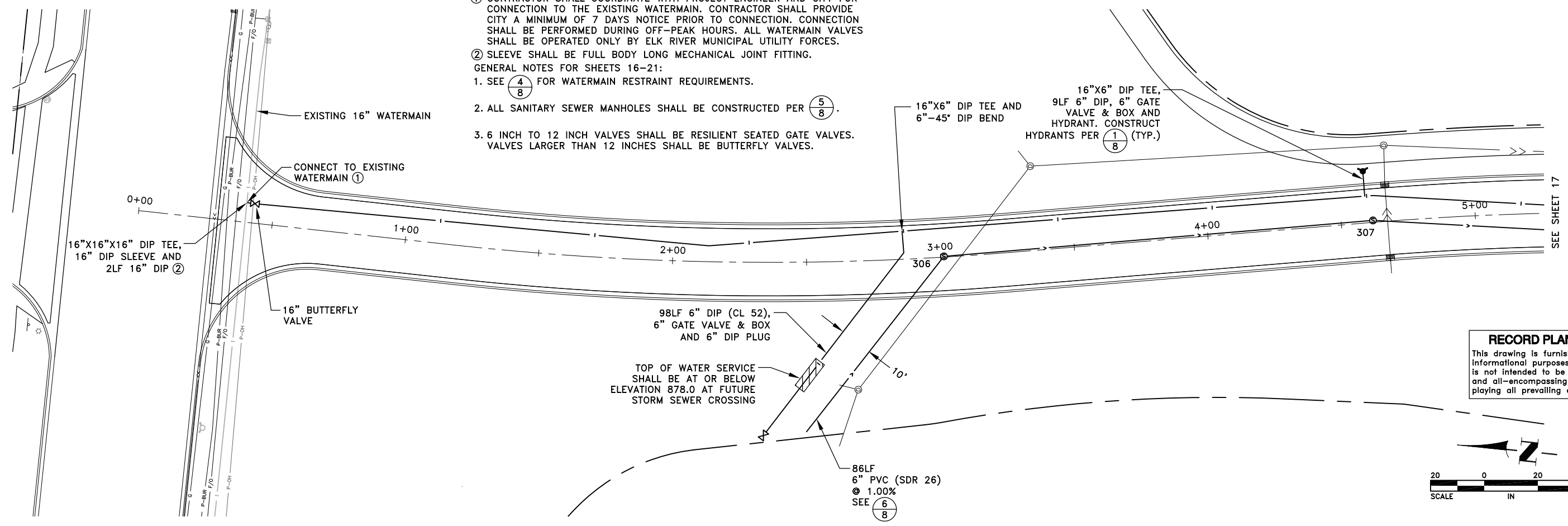
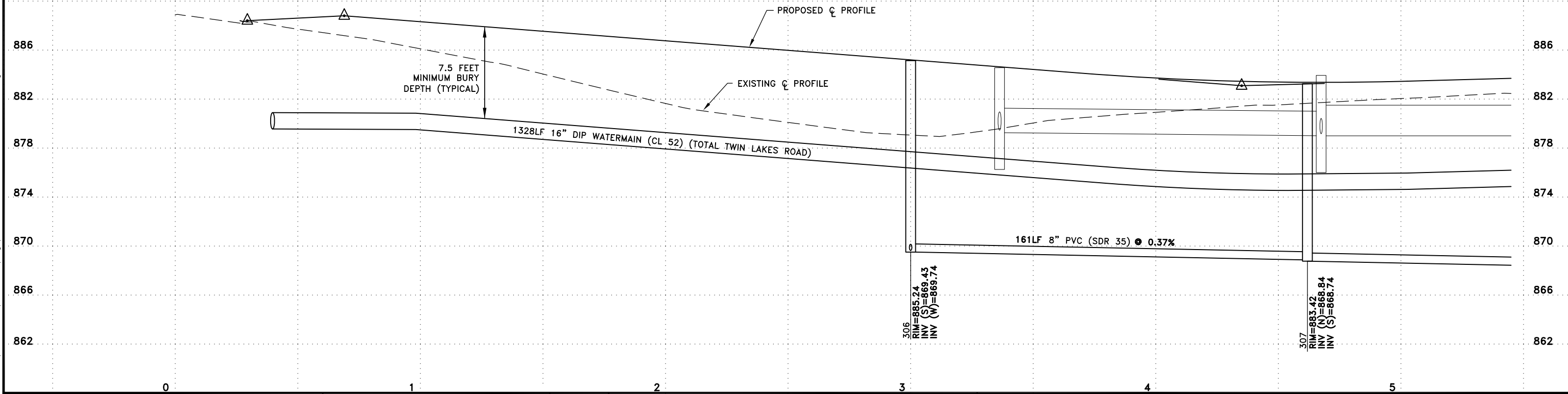


Nov 26, 2013 - 10:00am K:\cad_eng\PROJECTS\MUNICIPAL\ER301AB\dwg\ER301 SANITARY AND WATERMAIN.dwg

- REFERENCE NOTES:
- ① CONTRACTOR SHALL COORDINATE WITH PROJECT ENGINEER AND CITY FOR CONNECTION TO THE EXISTING WATERMAIN. CONTRACTOR SHALL PROVIDE CITY A MINIMUM OF 7 DAYS NOTICE PRIOR TO CONNECTION. CONNECTION SHALL BE PERFORMED DURING OFF-PEAK HOURS. ALL WATERMAIN VALVES SHALL BE OPERATED ONLY BY ELK RIVER MUNICIPAL UTILITY FORCES.
 - ② SLEEVE SHALL BE FULL BODY LONG MECHANICAL JOINT FITTING.
- GENERAL NOTES FOR SHEETS 16-21:
1. SEE (4/8) FOR WATERMAIN RESTRAINT REQUIREMENTS.
 2. ALL SANITARY SEWER MANHOLES SHALL BE CONSTRUCTED PER (5/8).
 3. 6 INCH TO 12 INCH VALVES SHALL BE RESILIENT SEATED GATE VALVES. VALVES LARGER THAN 12 INCHES SHALL BE BUTTERFLY VALVES.



RECORD PLAN
 This drawing is furnished for informational purposes only and is not intended to be complete and all-encompassing in displaying all prevailing conditions



DATE	REVISION
5/4/12	ISSUED FOR COUNCIL APPROVAL
5/21/12	ISSUED FOR CONSTRUCTION
11/15/13	RECORD PLAN

I hereby certify that this plan, specification, or report was prepared by me or under my direct supervision and that I am a duly Licensed Professional Engineer under the laws of the State of Minnesota.

Craig J. Johnson, P.E.
 Date 5/4/12 Lic. No. 23461

DESIGNED BY: TAE
 DRAWN BY: DMS
 CHECKED BY: CJJ



Hakanson Anderson
 Civil Engineers and Land Surveyors
 3601 Thurston Ave., Anoka, Minnesota 55303
 763-427-5860 FAX 763-427-0520
 www.hakanson-anderson.com

NATURES EDGE BUSINESS CENTER
 PHASE 1

SANITARY SEWER AND WATERMAIN PLAN
 TWIN LAKES ROAD
 CITY OF ELK RIVER, MINNESOTA

SHEET 16 OF 34 SHEETS