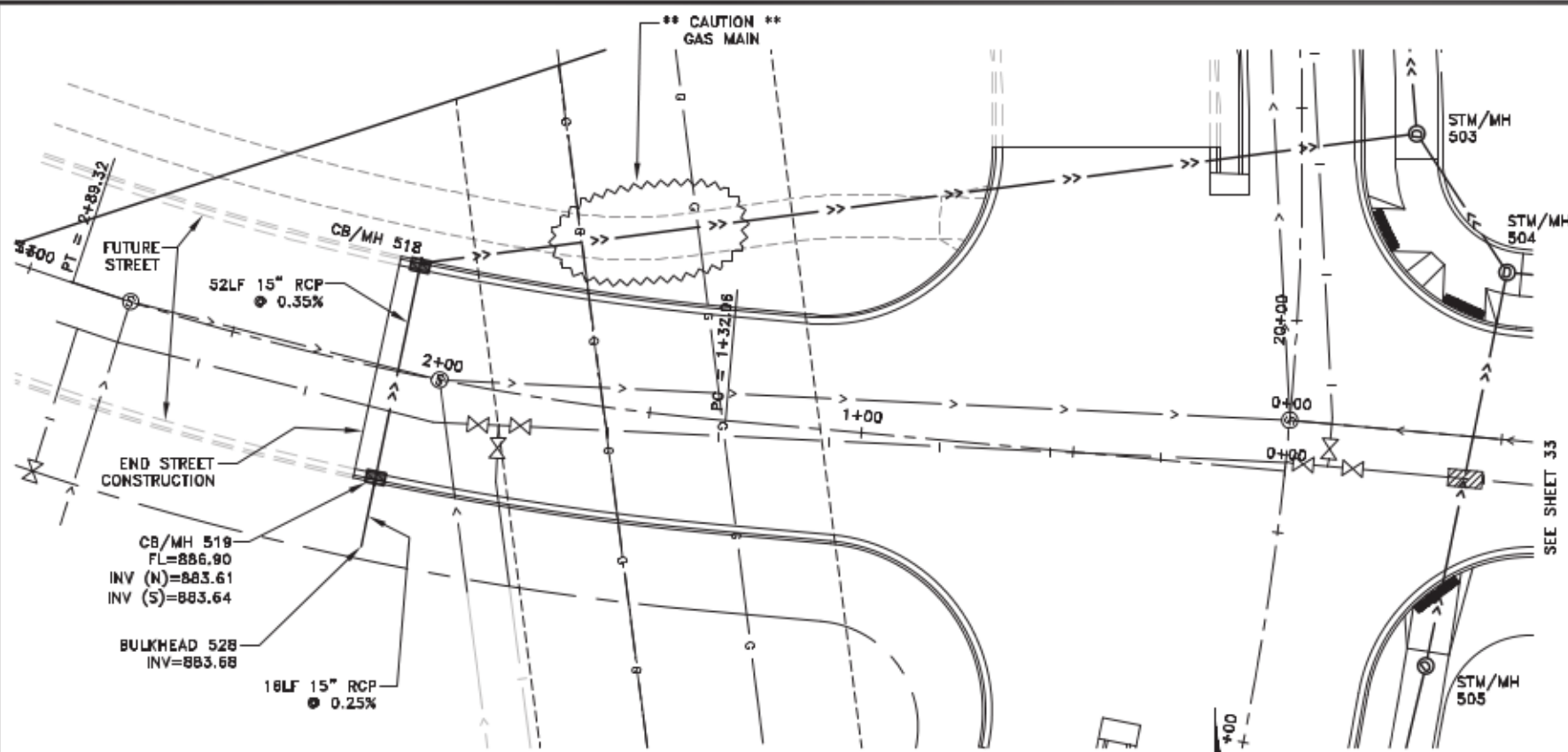
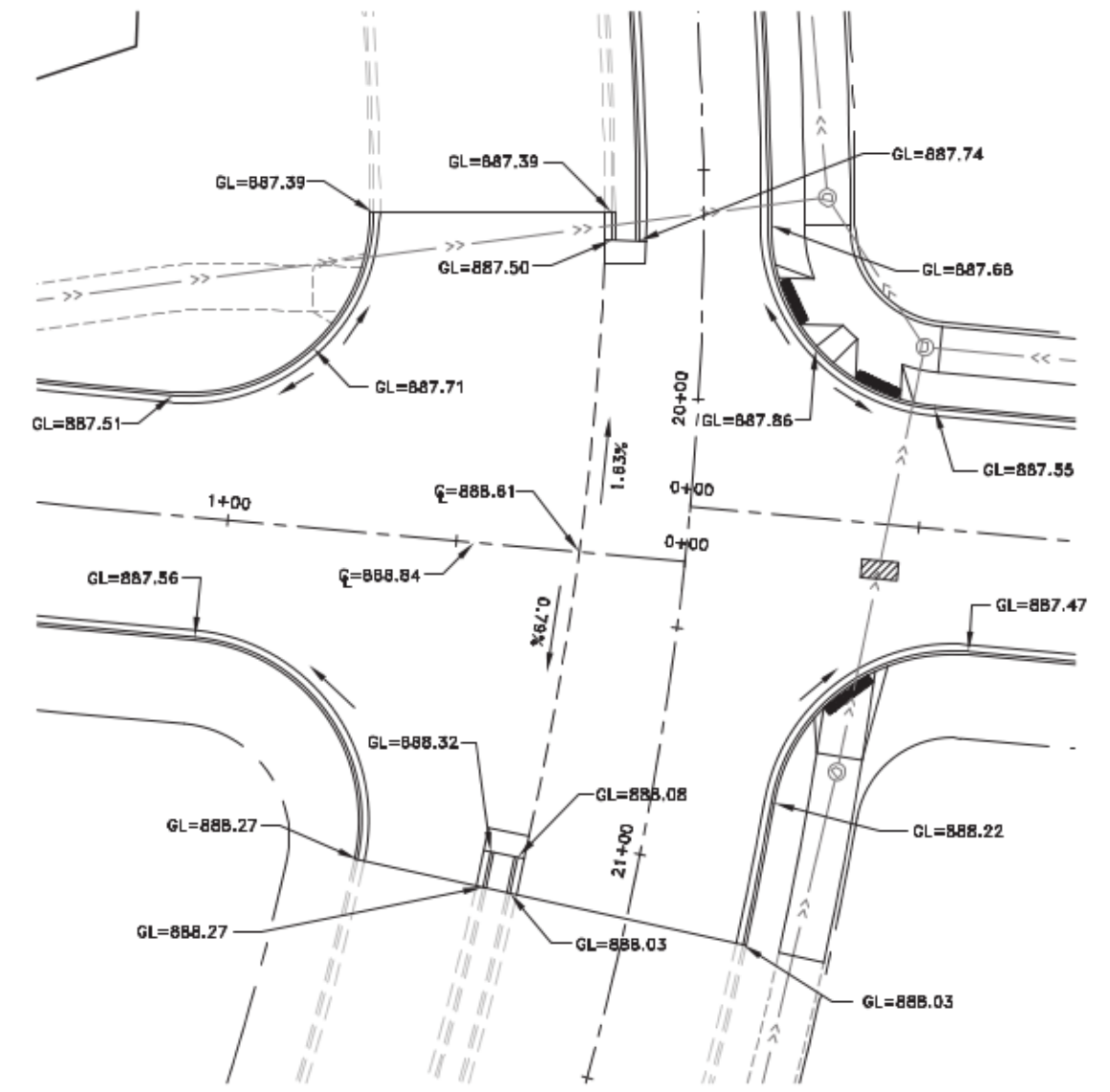
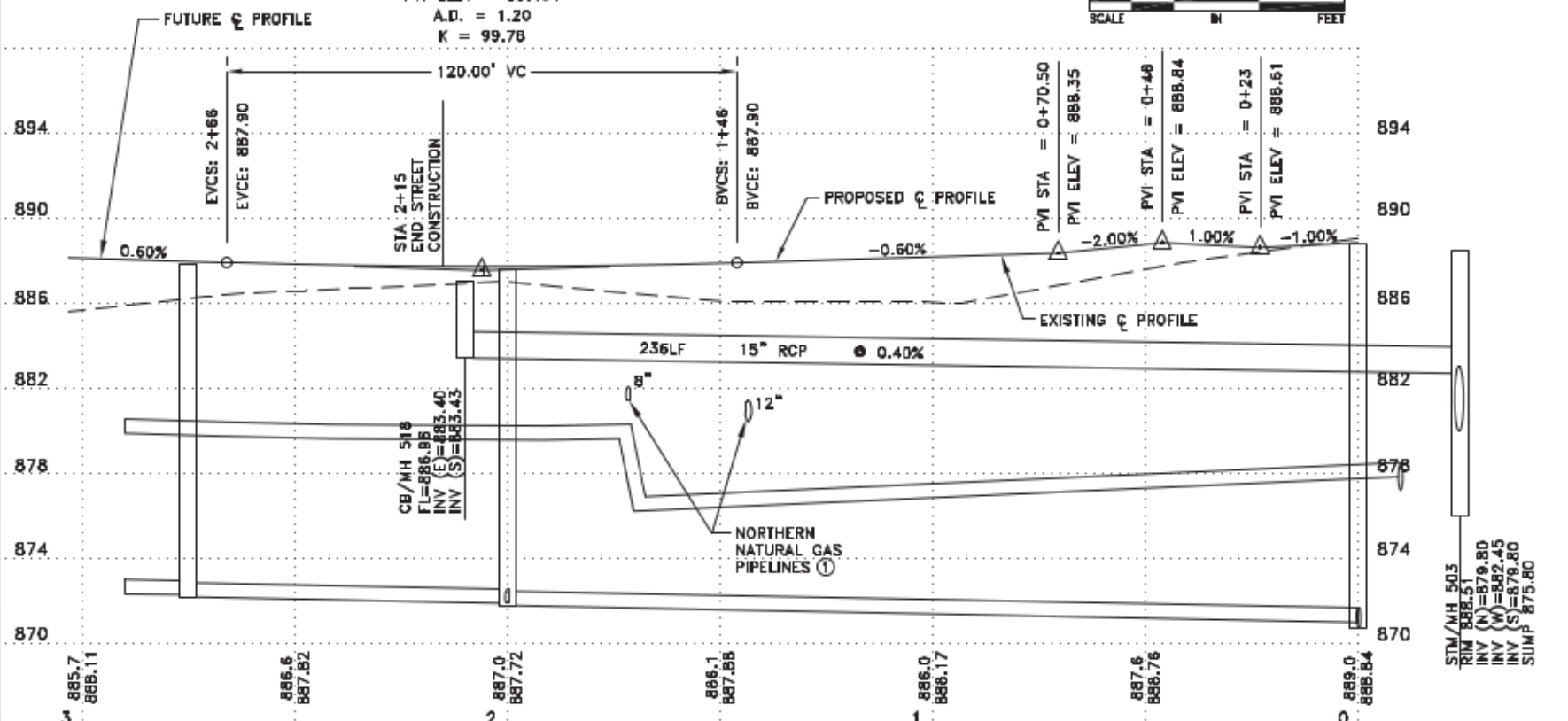


Mar 23, 2016 - 10:10am  
K:\local\_eng\PROJECTS\MUNICIPAL\ER302\AB\dwg\ER302 STREET AND STORM.dwg



LOW POINT ELEV = 887.72  
LOW POINT STA = 2+05.65  
PVI STA = 2+06  
PVI ELEV = 887.54  
A.D. = 1.20  
K = 99.78



1  
35 INTERSECTION DETAIL

REFERENCE NOTES:  
① PRIOR TO CONSTRUCTION, CONTRACTOR SHALL POTHOLE NORTHERN NATURAL GAS PIPELINES TO VERIFY DEPTH. AT A MINIMUM, THE PIPELINES SHALL BE POTHOLED WHERE THEY CROSS THE PROPOSED STREET CENTERLINE AND AT THE CURB LINES. CONTRACTOR SHALL SUPPORT PIPELINES AS NECESSARY TO PROTECT THE PIPELINES. CONTRACTOR SHALL ALSO EXPOSE PIPES AS DIRECTED BY ENGINEER PRIOR TO CROSSING WITH THE STORM SEWER. AS SHOWN, THE GAS PIPELINES ARE 8 INCHES AND 12 INCHES IN DIAMETER.

**RECORD PLAN**  
This drawing is furnished for informational purposes only and is not intended to be complete and all-encompassing in displaying all prevailing conditions.

DATE	REVISION
10/14/14	REVISED LOCATION OF STRUCTURE 504
8/21/16	RECORD PLAN

I hereby certify that this plan, specification, or report was prepared by me or under my direct supervision and that I am a duly Licensed Professional Engineer under the laws of the State of Minnesota.  
*Chris J. Johnson, P.E.*  
Date 8/15/14 Lic. No. 23461

DESIGNED BY  
TAE  
CHECKED BY  
DMS  
DRAWN BY  
CJJ



**Hakanson Anderson**  
Civil Engineers and Land Surveyors  
3501 Thurston Ave., Anoka, Minnesota 55303  
763-427-5880 FAX 763-427-0520  
www.hakanson-anderson.com

NATURES EDGE BUSINESS CENTER  
PHASE 2 IMPROVEMENTS

STREET AND STORM SEWER PLAN  
168TH AVENUE  
CITY OF ELK RIVER, MINNESOTA

SHEET  
35  
OF  
43  
SHEETS