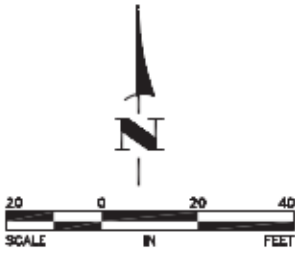
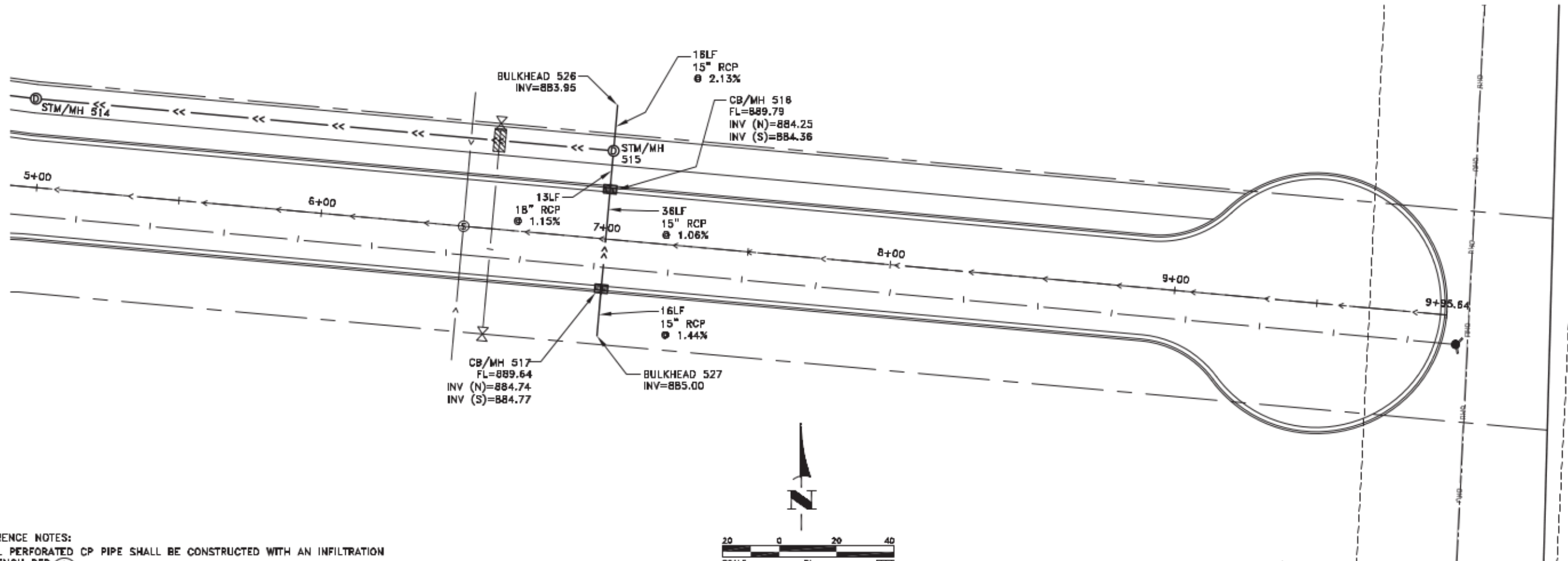


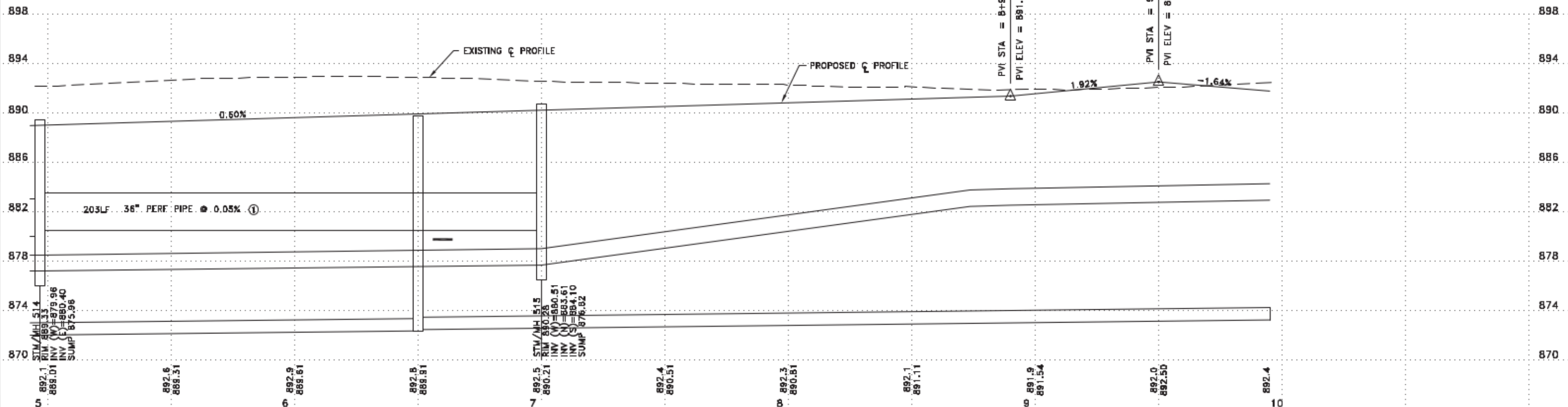
Mar 23, 2016 - 10:10am
K:\local_eng\PROJECTS\MUNICIPAL\ER302\AB\dwg\ER302 STREET AND STORM.dwg

SEE SHEET 33



REFERENCE NOTES:
 ① ALL PERFORATED CP PIPE SHALL BE CONSTRUCTED WITH AN INFILTRATION TRENCH PER ①/8

RECORD PLAN
 This drawing is furnished for informational purposes only and is not intended to be complete and all-encompassing in displaying all prevailing conditions.



DATE	REVISION
8/21/16	RECORD PLAN

I hereby certify that this plan, specification, or report was prepared by me or under my direct supervision and that I am a duly Licensed Professional Engineer under the laws of the State of Minnesota.
 Date 8/15/14
 Lic. No. 23461

DESIGNED BY: TAE
 CHECKED BY: DMS
 DRAWN BY: CJJ



Hakanson Anderson
 Civil Engineers and Land Surveyors
 3501 Thurston Ave., Anoka, Minnesota 55303
 763-427-5880 FAX 763-427-0520
 www.hakanson-anderson.com

**NATURES EDGE BUSINESS CENTER
 PHASE 2 IMPROVEMENTS**

STREET AND STORM SEWER PLAN
 168TH AVENUE
 CITY OF ELK RIVER, MINNESOTA

SHEET 34 OF 43 SHEETS
 ER302