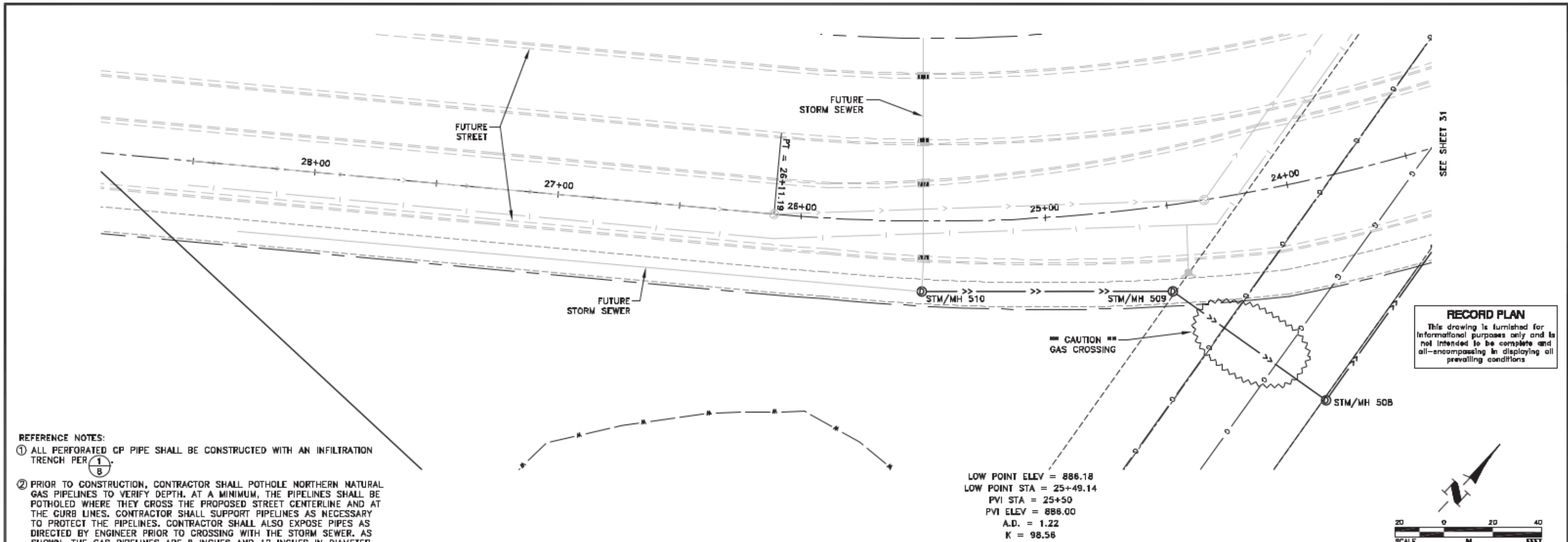
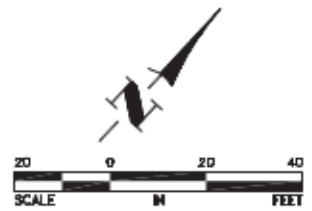


Mar 23, 2016 - 10:08am
K:\load_eng\PROJECTS\MUNICIPAL\ER302AB\dwg\ER302 STREET AND STORM.dwg

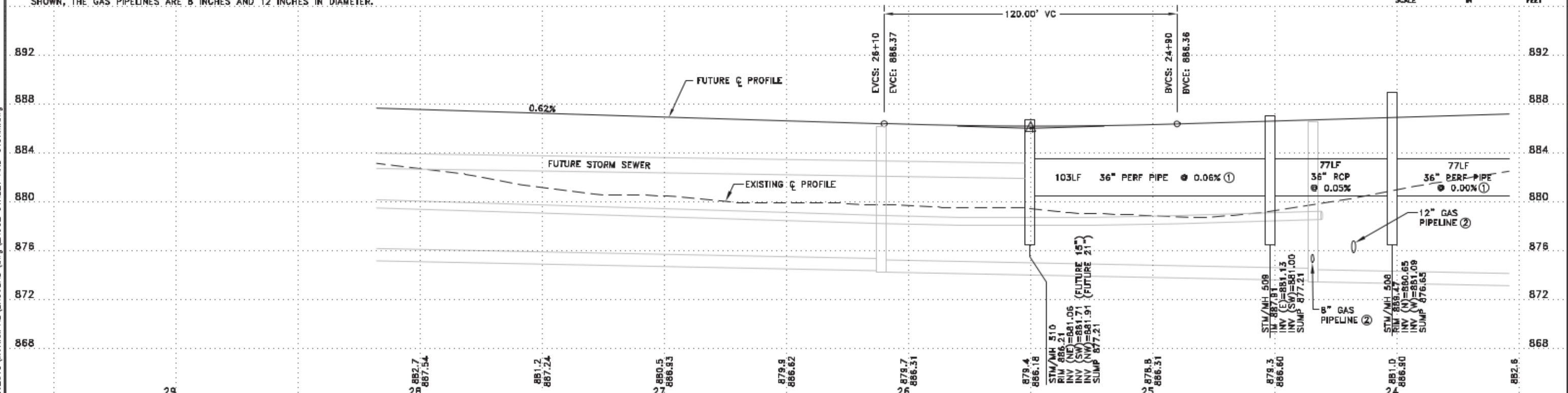


RECORD PLAN
This drawing is furnished for informational purposes only and is not intended to be complete and all-encompassing in displaying all prevailing conditions.



- REFERENCE NOTES:**
- ① ALL PERFORATED CP PIPE SHALL BE CONSTRUCTED WITH AN INFILTRATION TRENCH PER $\frac{1}{8}$
 - ② PRIOR TO CONSTRUCTION, CONTRACTOR SHALL POTHOLE NORTHERN NATURAL GAS PIPELINES TO VERIFY DEPTH. AT A MINIMUM, THE PIPELINES SHALL BE POTHOLED WHERE THEY CROSS THE PROPOSED STREET CENTERLINE AND AT THE CURB LINES. CONTRACTOR SHALL SUPPORT PIPELINES AS NECESSARY TO PROTECT THE PIPELINES. CONTRACTOR SHALL ALSO EXPOSE PIPES AS DIRECTED BY ENGINEER PRIOR TO CROSSING WITH THE STORM SEWER. AS SHOWN, THE GAS PIPELINES ARE 8 INCHES AND 12 INCHES IN DIAMETER.

LOW POINT ELEV = 886.18
LOW POINT STA = 25+49.14
PVI STA = 25+50
PVI ELEV = 886.00
A.D. = 1.22
K = 98.58



DATE	REVISION
8/21/16	RECORD PLAN

I hereby certify that this plan, specification, or report was prepared by me or under my direct supervision and that I am a duly Licensed Professional Engineer under the laws of the State of Minnesota.
Chang J. Johnson, P.E.
Date 8/15/14 Lic. No. 23461

DESIGNED BY
TAE
CHECKED BY
DMS
DRAWN BY
CJJ



Hakanson Anderson
Civil Engineers and Land Surveyors
3501 Thurston Ave., Anoka, Minnesota 55303
763-427-5880 FAX 763-427-0520
www.hakanson-anderson.com

**NATURES EDGE BUSINESS CENTER
PHASE 2 IMPROVEMENTS**

STREET AND STORM SEWER PLAN
TWIN LAKES ROAD
CITY OF ELK RIVER, MINNESOTA

SHEET 32 OF 43 SHEETS