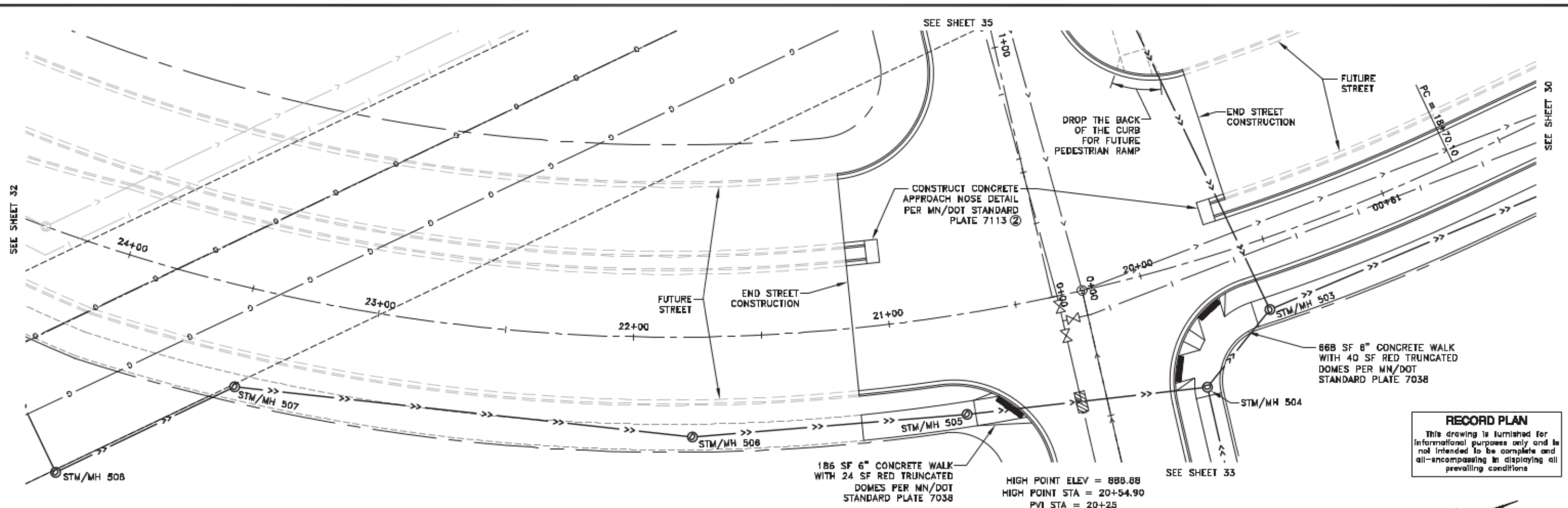


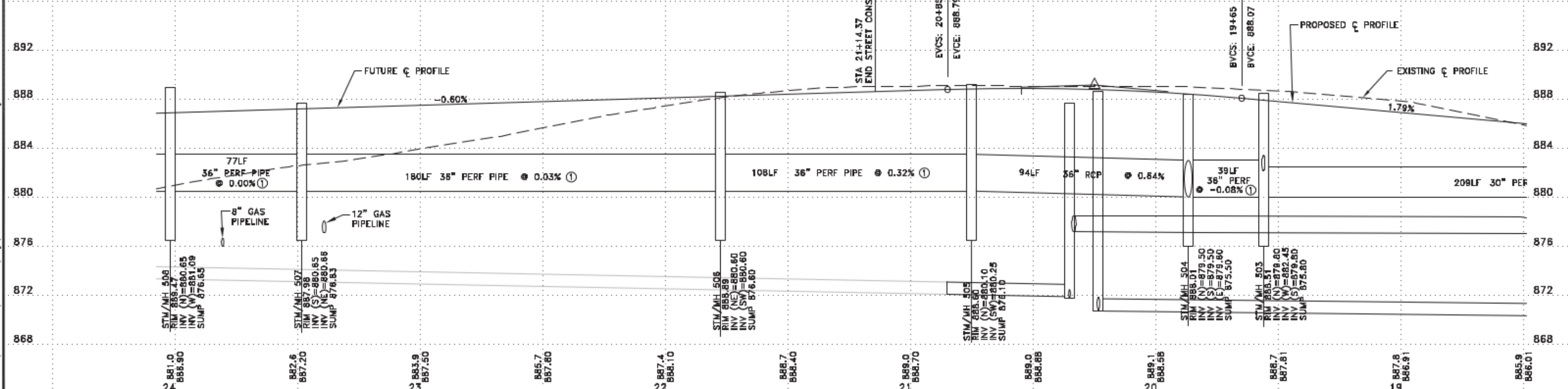
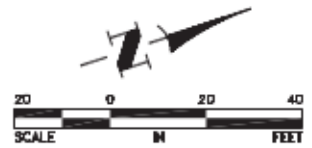
Mar 23, 2016 - 10:45am
K:\cad_eng\PROJECTS\MUNICIPAL\ER302AB.dwg\ER302 STREET AND STORM.dwg



RECORD PLAN
This drawing is furnished for informational purposes only and is not intended to be complete and all-encompassing in displaying all prevailing conditions.

- REFERENCE NOTES:
 ① ALL PERFORATED CP PIPE SHALL BE CONSTRUCTED WITH AN INFILTRATION TRENCH PER $\frac{1}{8}$.
 ② CONCRETE APPROACH NOSE SHALL BE PAID PER ITEM 2521-6" CONCRETE WALK REGARDLESS OF FINAL DEPTH.

HIGH POINT ELEV = 888.88
 HIGH POINT STA = 20+54.90
 PVI STA = 20+25
 PVI ELEV = 889.15
 A.D. = -2.39
 K = 50.17
 120.00' VC



DATE	REVISION
10/14/14	REVISED LOCATION OF STRUCTURE 504
3/21/16	RECORD PLAN

I hereby certify that this plan, specification, or report was prepared by me or under my direct supervision and that I am a duly Licensed Professional Engineer under the laws of the State of Minnesota.
 Date 8/15/14
 Lic. No. 23461

DESIGNED BY: TAE
 CHECKED BY: DMS
 DRAWN BY: CJJ



Hakanson Anderson
 Civil Engineers and Land Surveyors
 3501 Thurston Ave., Anoka, Minnesota 55303
 763-427-5880 FAX 763-427-0520
 www.hakanson-anderson.com

**NATURES EDGE BUSINESS CENTER
 PHASE 2 IMPROVEMENTS**

STREET AND STORM SEWER PLAN
 TWIN LAKES ROAD
 CITY OF ELK RIVER, MINNESOTA

SHEET 31 OF 43 SHEETS
 ER302