
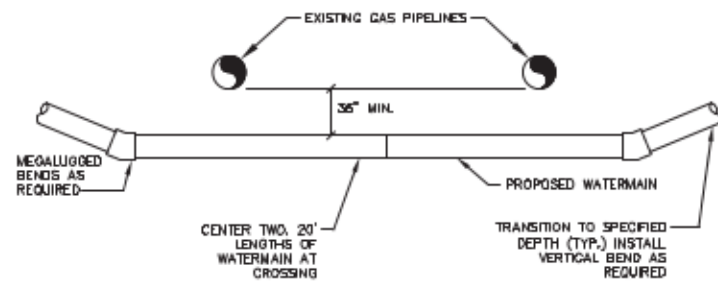


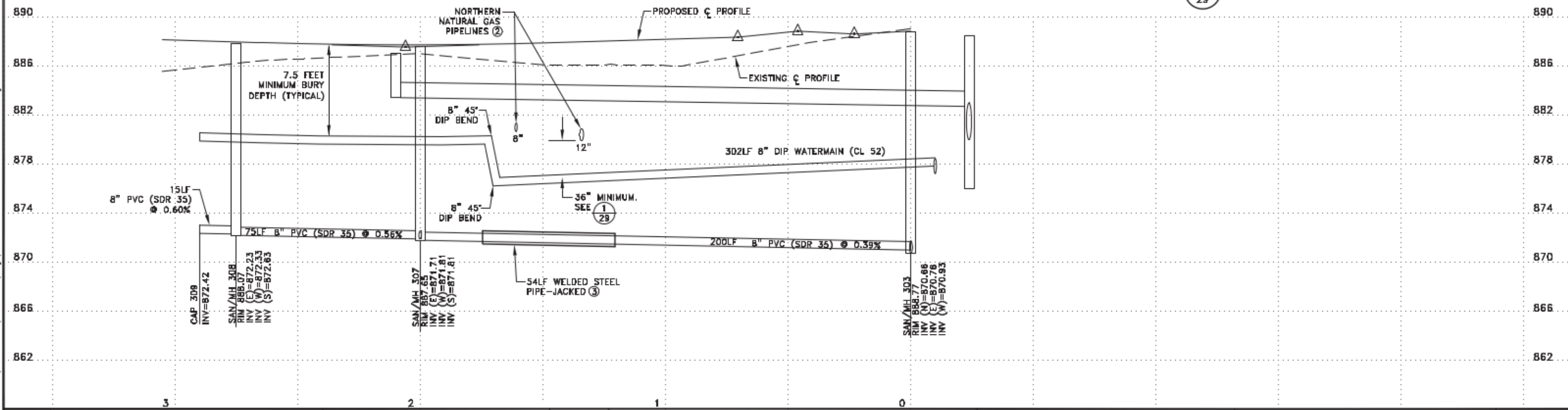
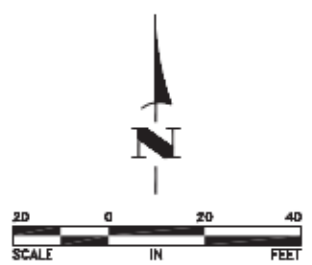
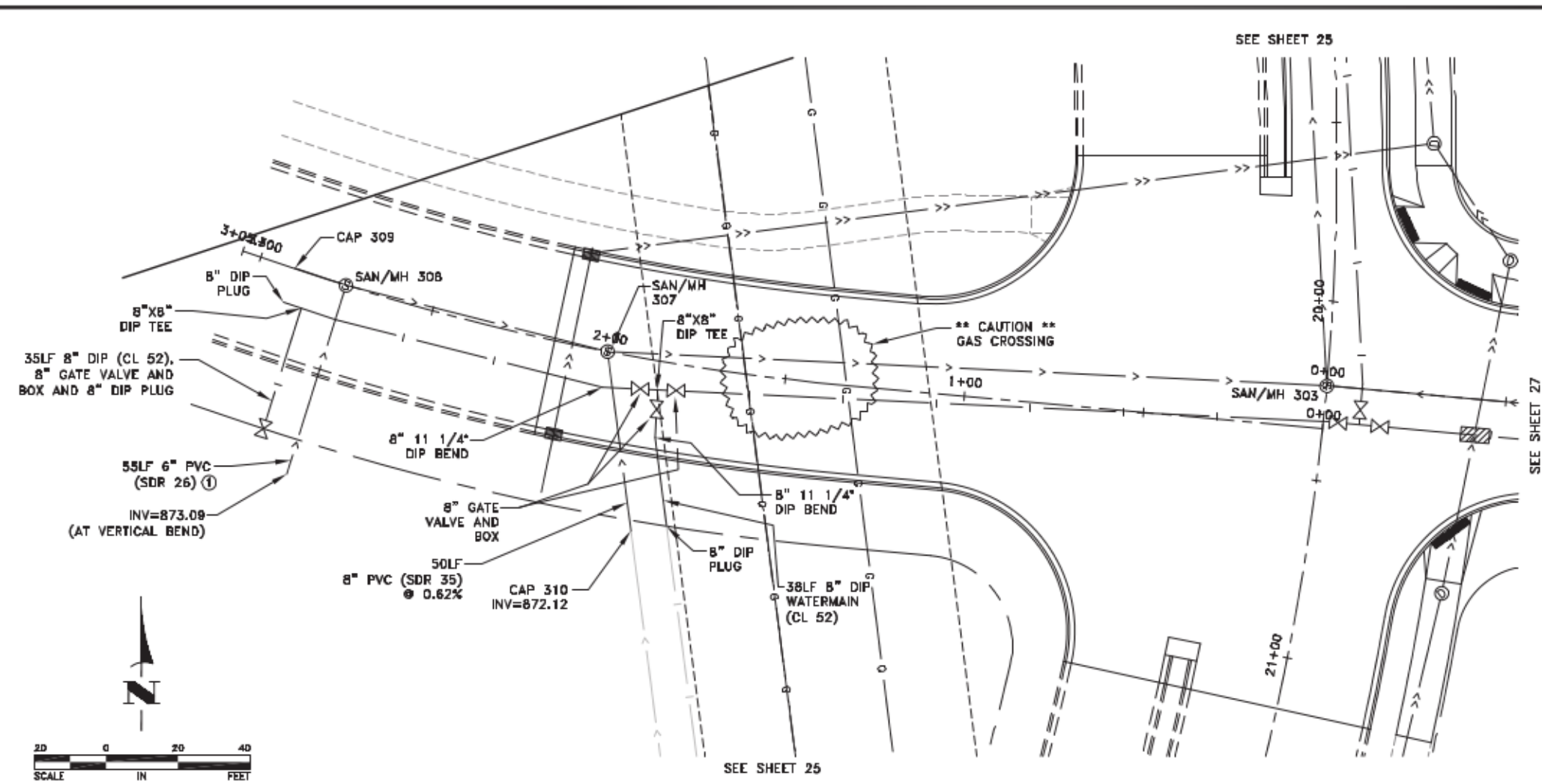
**RECORD PLAN**  
 This drawing is furnished for informational purposes only and is not intended to be complete and all-encompassing in displaying all prevailing conditions.

**REFERENCE NOTES:**

- ① SEWER SERVICE SHALL BE CONSTRUCTED PER .
- ② PRIOR TO CONSTRUCTION, CONTRACTOR SHALL POTHOLE NORTHERN NATURAL GAS PIPELINES TO VERIFY DEPTH. AT A MINIMUM, THE PIPELINES SHALL BE POTHOLED WHERE THEY CROSS THE PROPOSED STREET CENTERLINE AND AT THE CURB LINES. CONTRACTOR SHALL SUPPORT PIPELINES AS NECESSARY TO PROTECT THE PIPELINES. CONTRACTOR SHALL ALSO EXPOSE PIPES AS DIRECTED BY ENGINEER PRIOR TO CROSSING WITH THE WATERMAIN AND SEWER. AS SHOWN, THE GAS PIPELINES ARE 8 INCHES AND 12 INCHES IN DIAMETER.
- ③ THE FOLLOWING RESTRAINED JOINTS FOR THE CARRIER PIPE SHALL BE APPROVED FOR USE ON THIS PROJECT FOR THE PVC GRAVITY SEWER PIPE
  - a. BELL CLAMPS WITH TIE RODS. ← THIS OPTION WAS USED
  - b. "CERTA LOK" AS MANUFACTURED BY CERTANTEED OR EQUAL.
  - c. "EAGLE LOC" AS MANUFACTURED BY JM EAGLE OR EQUAL.
 ALL CARRIER PIPES SHALL HAVE RESTRAINED JOINTS UNLESS OTHERWISE APPROVED BY THE ENGINEER. THE COSTS ASSOCIATED WITH PROVIDING RESTRAINED JOINTS SHALL BE CONSIDERED INCIDENTAL TO THE CONTRACT. THE CARRIER PIPE SHALL BE PAID SEPARATELY PER ITEM 2503-8" PVC PIPE SEWER SDR 35.

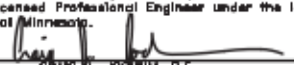


①  
 29  
**NORTHERN NATURAL GAS PIPELINE CROSSING**



Dec 07, 2016 - 9:26am  
 K:\cad\eng\PROJECTS\MUNICIPAL\ER302\AB\dwg\ER302 SANITARY AND WATERMAIN.dwg

DATE	REVISION
10/14/14	REVISED STORM SEWER
8/21/16	RECORD PLAN
12/7/16	UPDATED SANITARY SEWER RIM ELEVATIONS

I hereby certify that this plan, specification, or report was prepared by me or under my direct supervision and that I am a duly Licensed Professional Engineer under the laws of the State of Minnesota.  
  
 Date 8/15/14  
 Craig J. Johnson, P.E.  
 Lic. No. 23461

DESIGNED BY  
 TAE  
 CHECKED BY  
 DMS  
 DRAWN BY  
 CJJ



**Hakanson Anderson**  
 Civil Engineers and Land Surveyors  
 3501 Thurston Ave., Anoka, Minnesota 55303  
 763-427-5880 FAX 763-427-0520  
 www.hakanson-anderson.com

NATURES EDGE BUSINESS CENTER  
 PHASE 2 IMPROVEMENTS

SANITARY SEWER AND WATERMAIN PLAN  
 168TH AVENUE  
 CITY OF ELK RIVER, MINNESOTA

SHEET 29 OF 43 SHEETS  
 ER302