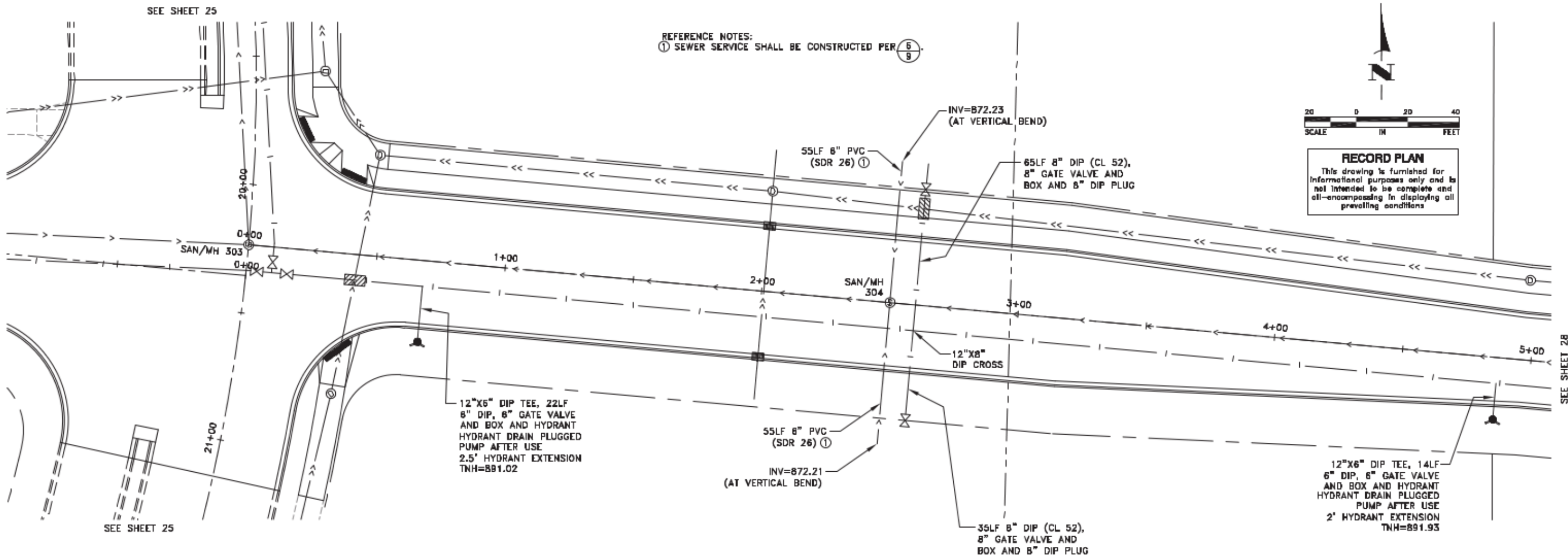
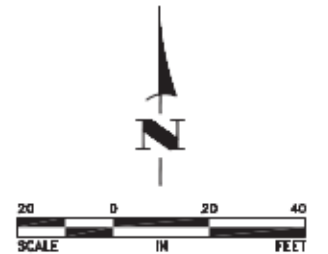


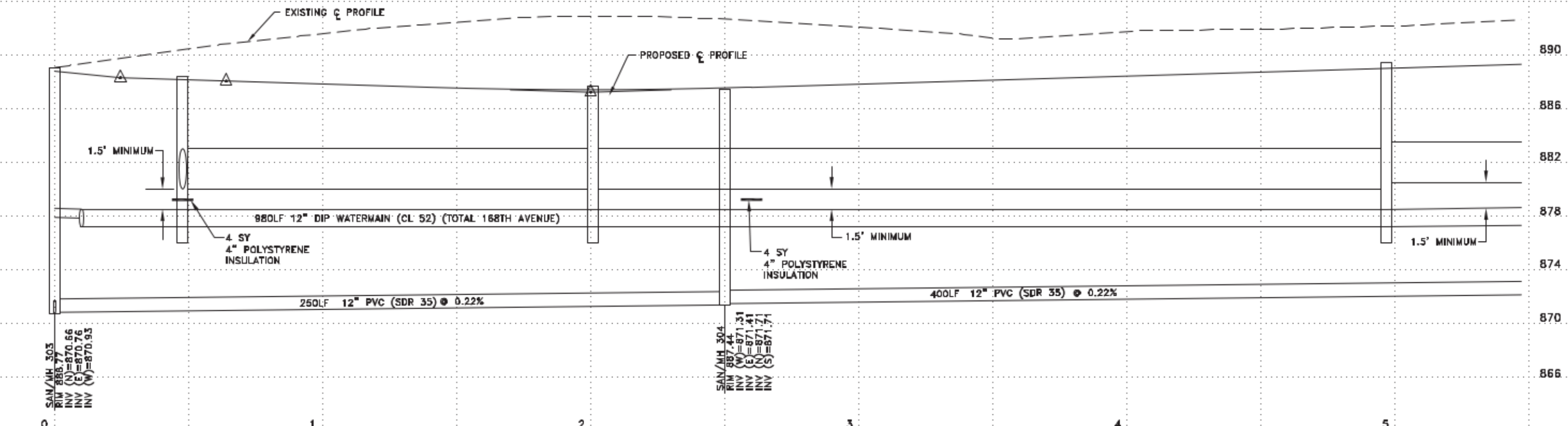
Dec 07, 2016 - 9:25am K:\cad\eng\PROJECTS\MUNICIPAL\ER302\AB\ER302 SANITARY AND WATERMAIN.dwg



REFERENCE NOTES:
 ① SEWER SERVICE SHALL BE CONSTRUCTED PER $\frac{6}{9}$



RECORD PLAN
 This drawing is furnished for informational purposes only and is not intended to be complete and all-encompassing in displaying all prevailing conditions.



DATE	REVISION
10/14/14	REVISED STORM SEWER
8/21/16	RECORD PLAN
12/7/16	UPDATED SANITARY SEWER RIM ELEVATIONS

I hereby certify that this plan, specification, or report was prepared by me or under my direct supervision and that I am a duly Licensed Professional Engineer under the laws of the State of Minnesota.
 Date 8/15/14
 Craig J. Johnson, P.E.
 Lic. No. 23461

DESIGNED BY: TAE
 DRAWN BY: DMS
 CHECKED BY: CJJ



Hakanson Anderson
 Civil Engineers and Land Surveyors
 3501 Thurston Ave., Anoka, Minnesota 55303
 763-427-5880 FAX 763-427-0520
 www.hakanson-anderson.com

NATURES EDGE BUSINESS CENTER
 PHASE 2 IMPROVEMENTS

SANITARY SEWER AND WATERMAIN PLAN
 168TH AVENUE
 CITY OF ELK RIVER, MINNESOTA

SHEET 27 OF 43 SHEETS
 ER302