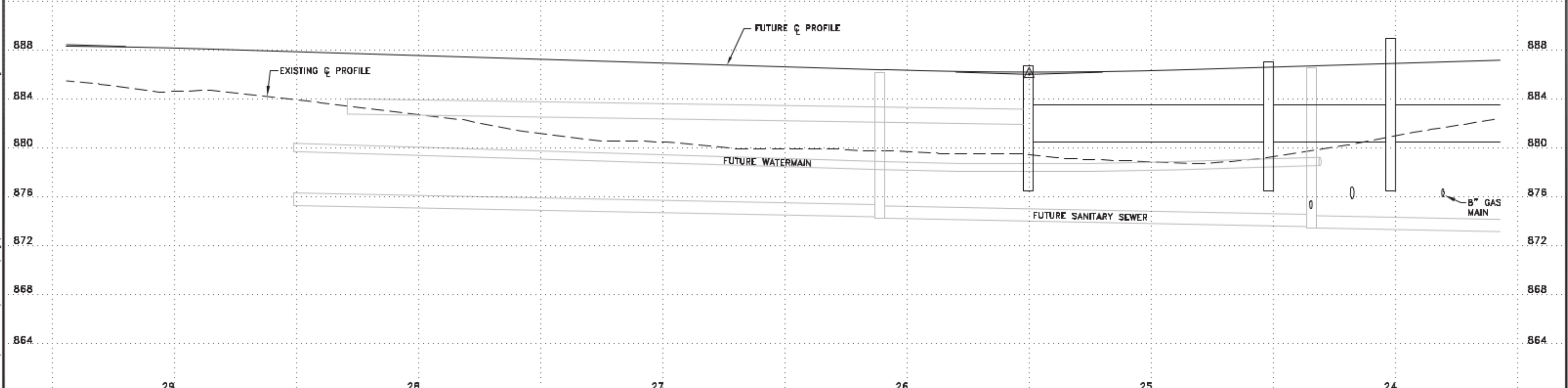
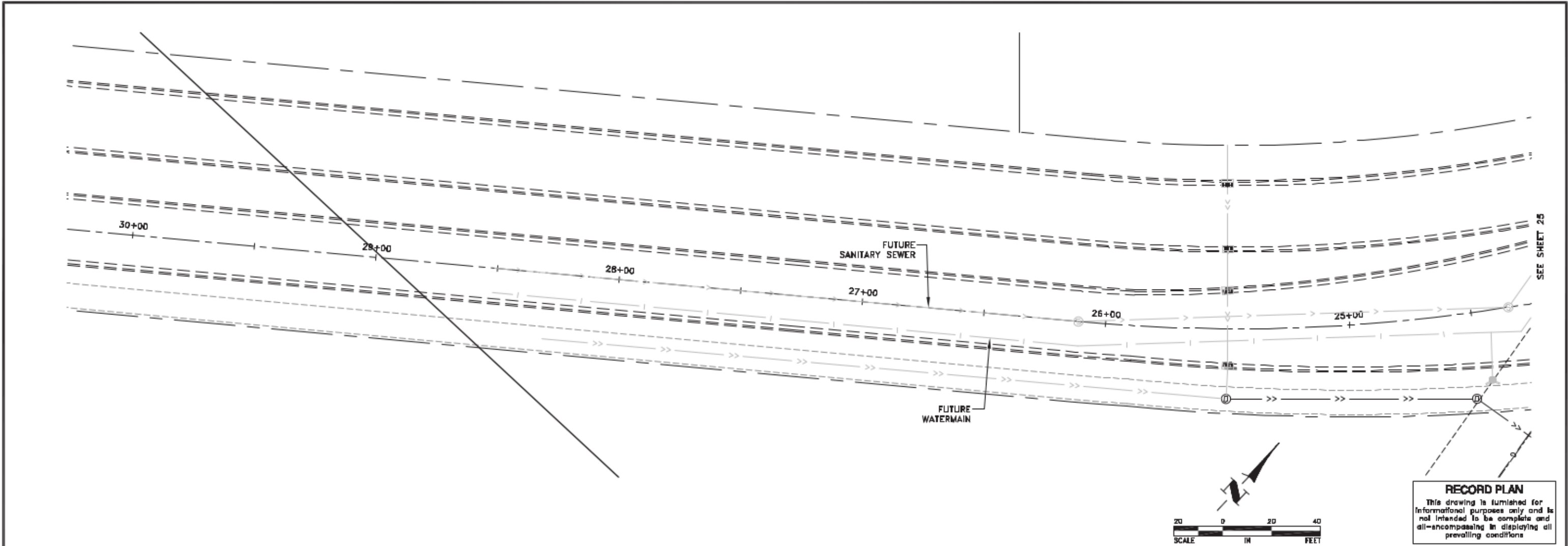


Dec 07, 2016 - 9:25am
K:\cad\eng\PROJECTS\MUNICIPAL\ER302\AB\dwg\ER302 SANITARY AND WATERMAIN.dwg



DATE	REVISION
3/21/16	RECORD PLAN

I hereby certify that this plan, specification, or report was prepared by me or under my direct supervision and that I am a duly Licensed Professional Engineer under the laws of the State of Minnesota.

Chang J. Johnson, P.E.
 Date 8/15/14 Lic. No. 23461

DESIGNED BY
TAE

CHECKED BY
DMS

DATE PLOTTED BY
CJJ



Hakanson Anderson
 Civil Engineers and Land Surveyors
 3501 Thurston Ave., Anoka, Minnesota 55303
 763-427-5880 FAX 763-427-0520
 www.hakanson-anderson.com

**NATURES EDGE BUSINESS CENTER
 PHASE 2 IMPROVEMENTS**

SANITARY SEWER AND WATERMAIN PLAN

TWIN LAKES ROAD
 CITY OF ELK RIVER, MINNESOTA

SHEET 26 OF 43 SHEETS
 ER302