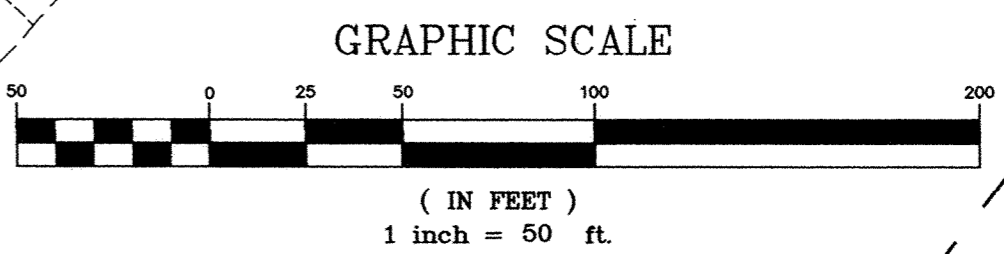
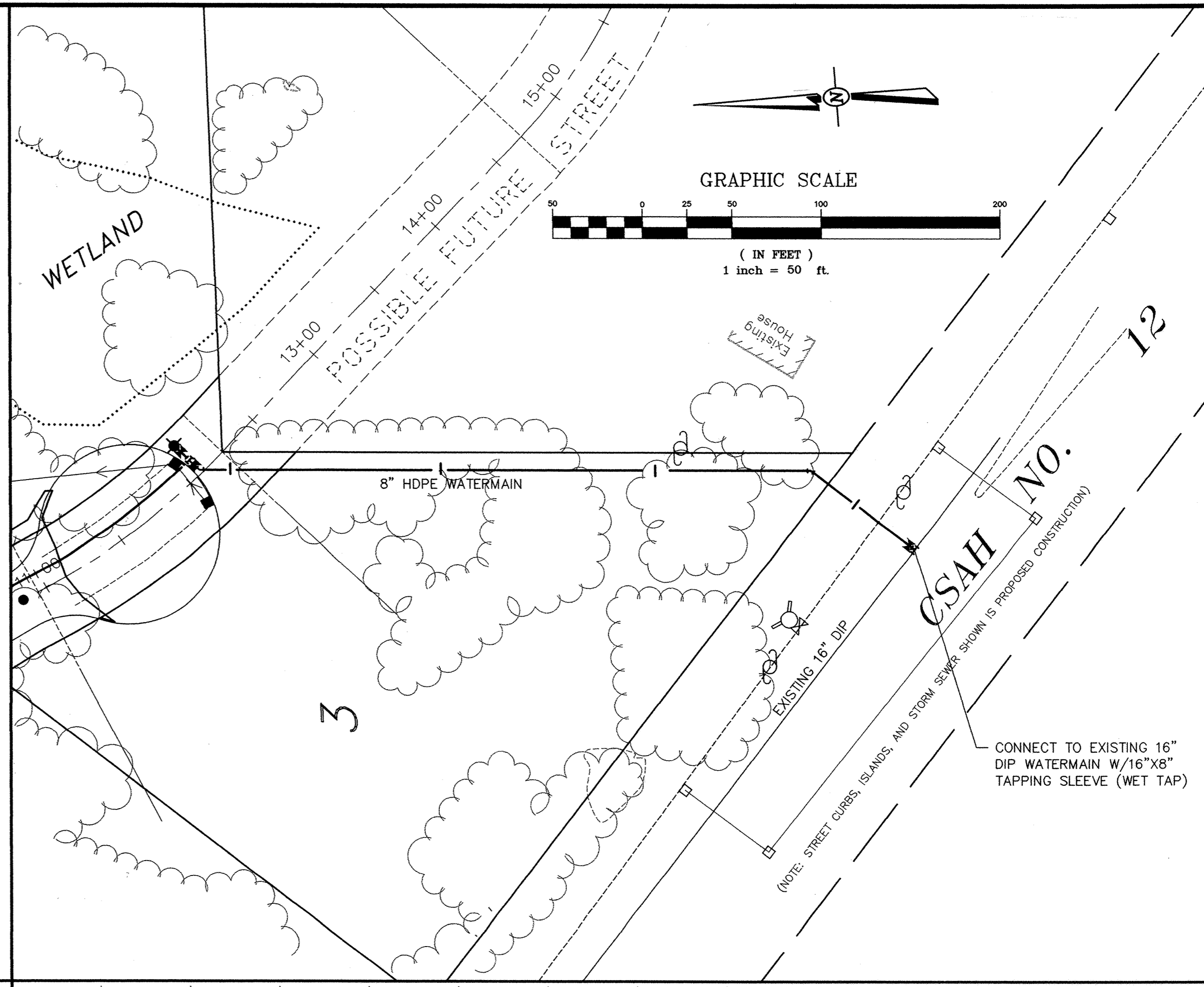


- 1 1/2" - MNDOT 2331, TYPE 41 WEARING COURSE
- MNDOT 2357 TACK COAT
- 2 1/2" - MNDOT 2331, TYPE 31, NON-WEAR COURSE
- 6" - MNDOT 3138 CLASS 5
- COMPACTED GRANULAR SUB-BASE (SEE NOTE)
- B618 CONCRETE CURB AND GUTTER

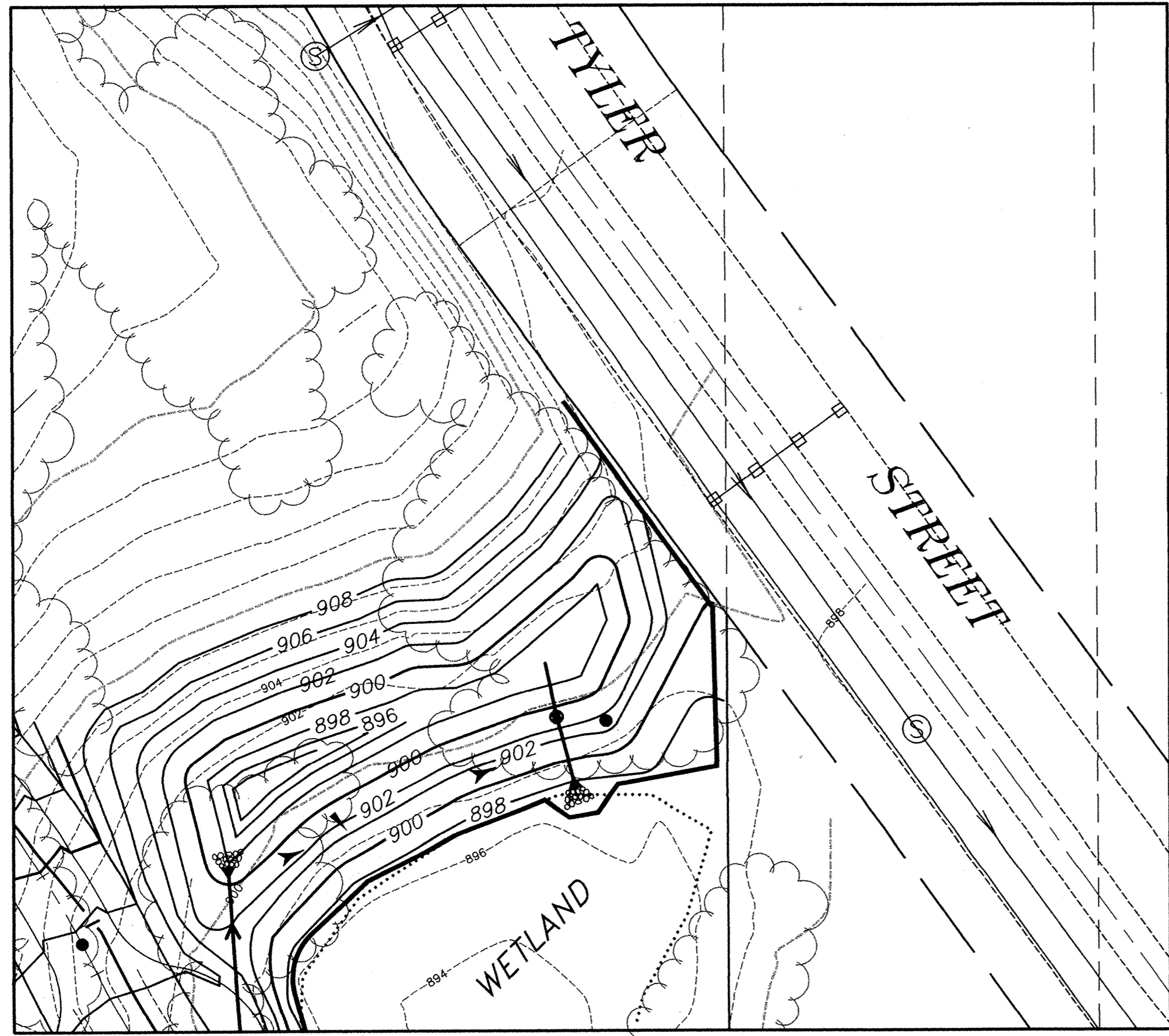
NOTE: IF SUB - BASE IS NOT GRANULAR, A GRANULAR SUB-BASE CORRECTION MAY BE REQUIRED AS DIRECTED BY THE ENGINEER.

TYPICAL STREET SECTION
NOT TO SCALE

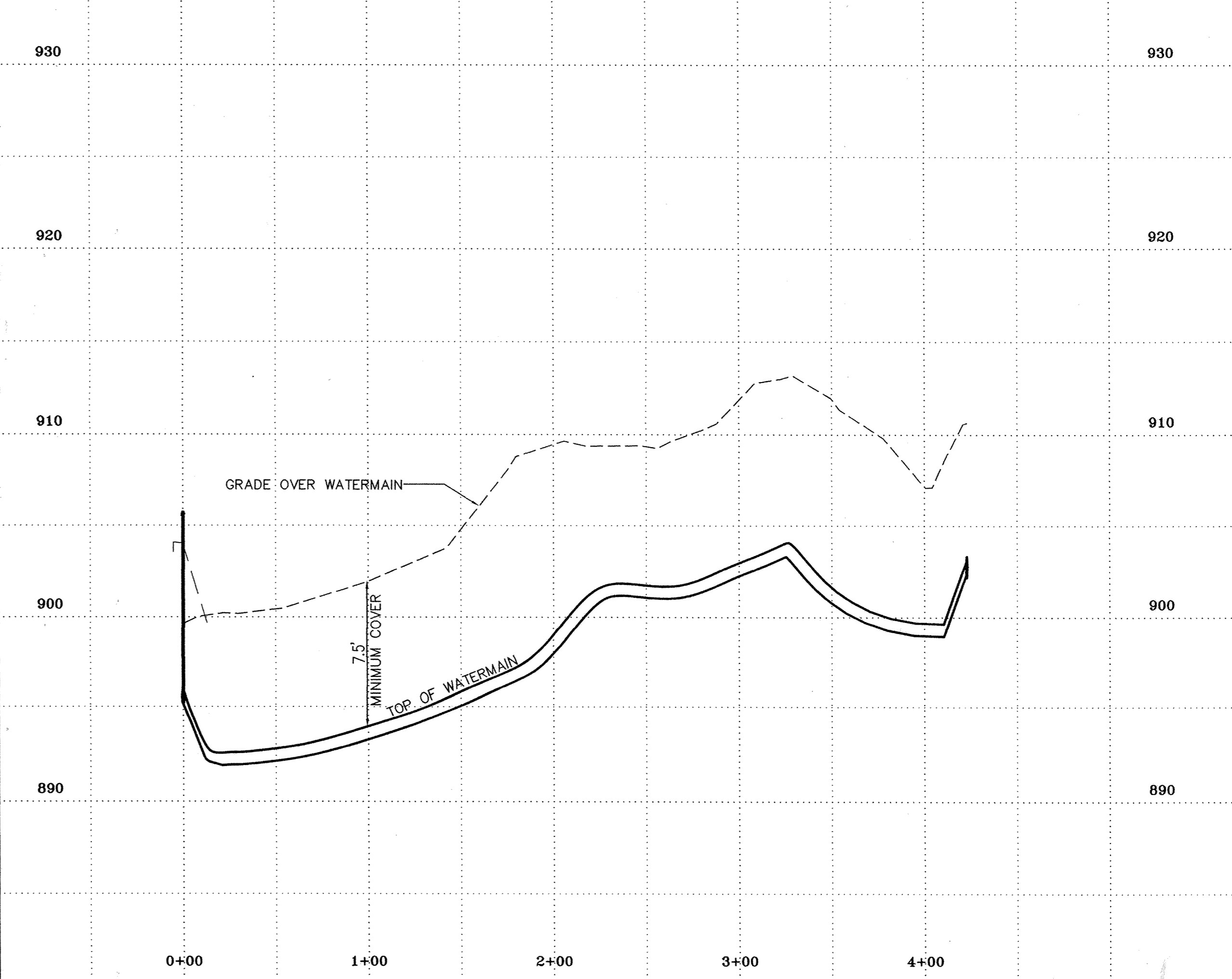
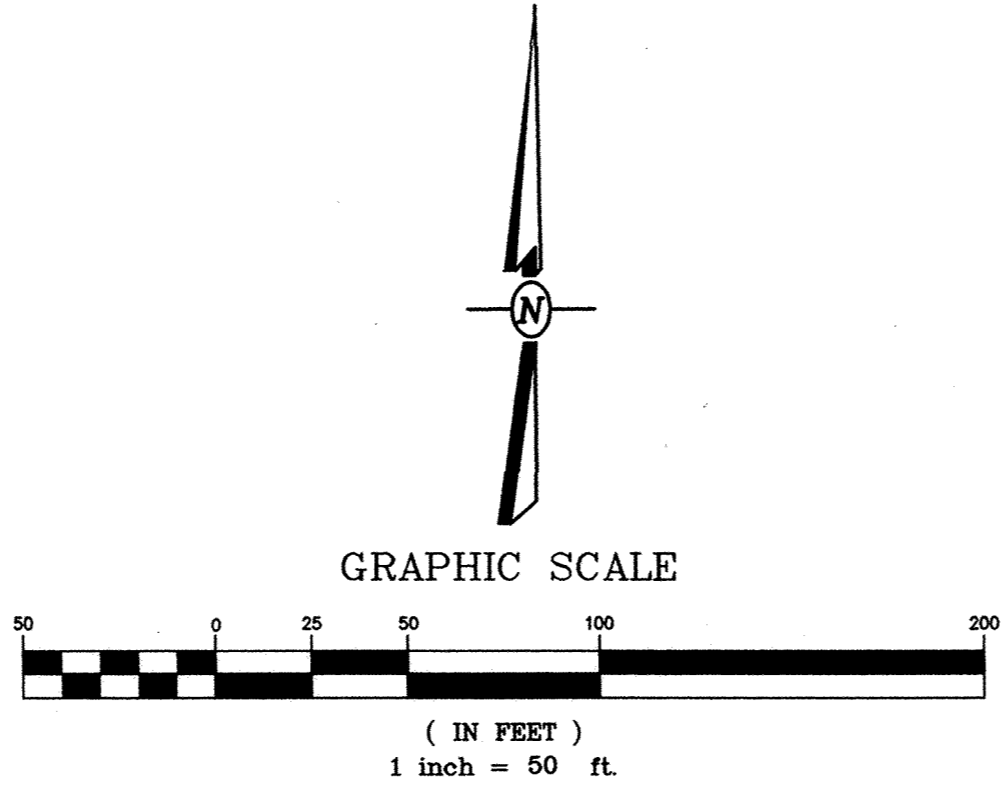


MIDWEST
Lead Surveyors & Civil Engineers, Inc.
 716 East River Road
 St. Cloud, MN 56301
 Phone: 812-712-9009 Fax: 812-712-9005
 Job No. 99-236 Book-Page
 Lead File PP-2
 © 2000-Midwest Lead Surveyors & Civil Engineers, Inc. - All Rights Reserved
 Registration No. 13432

I hereby certify that this plan, prepared by me or under my direct supervision, and that I am a duly Licensed Professional Engineer under the laws of the State of Minnesota. Date: 6/2/00



POND AREA GRADING



REVISIONS
3RD STREET TO CSAH 12
 EAST OF COUNTY ROAD 13 (TWIN LAKES ROAD, NW)
WATERMAIN PLAN AND PROFILE
POND GRADING
TYPICAL STREET SECTION
MULVANEY POINT
RON WALD
 1524 221ST AVENUE
 EAST BETHEL, MINNESOTA 55011 (763) 434-5637
 SHEET **4**
 OF 4 SHEETS

SHEET PRODUCTS • NEW HOPE, MINNESOTA
 REGISTERED PROFESSIONAL ENGINEER
 LICENSE NO. 13432