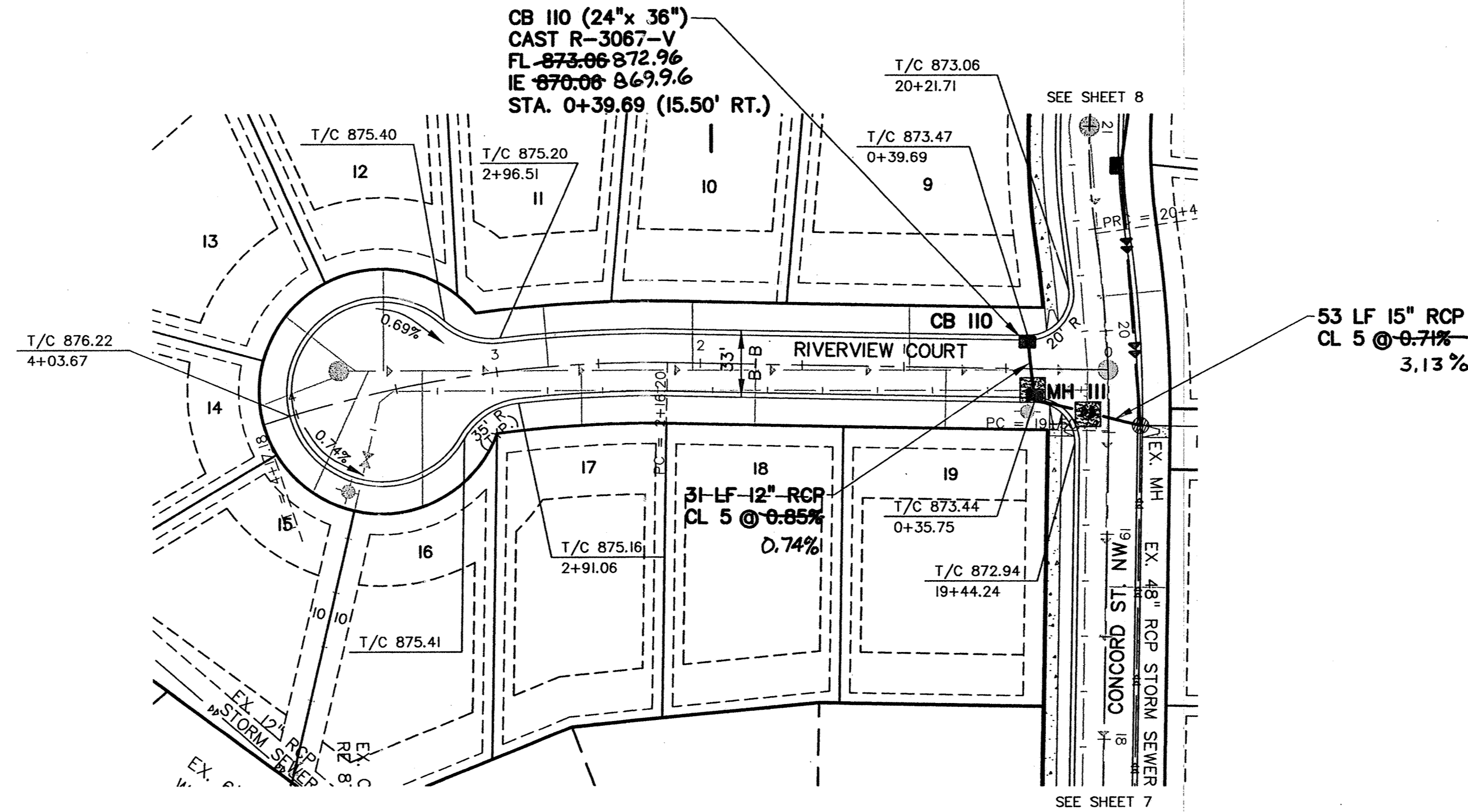


RIVERVIEW COURT



RECORD DRAWINGS

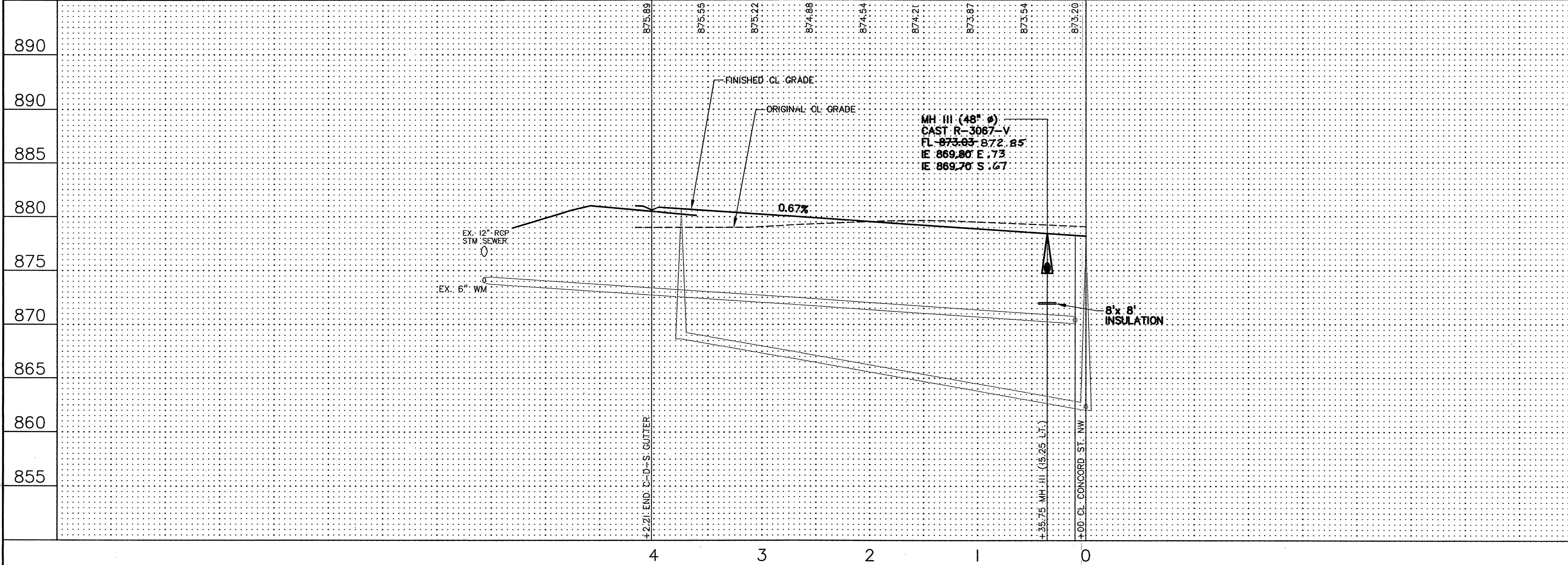
PRIME CONTRACTOR/UTILITIES: KUECHLE UNDERGROUND, INC.
 EARTHWORK: NORTH PINE AGGREGATE, INC.
 CURB & GUTTER: SCHMIDT CURB COMPANY, INC.
 STREETS: BAUERLY BROTHERS CO.
 INSPECTION: HOWARD R. GREEN, INC.
 SURVEY: JOHN OLIVER & ASSOCIATES, INC.
 RECORD DRAWINGS: FRED FRITSCHEL, JOHN OLIVER & ASSOCIATES, INC.
 CONSTRUCTED: 2002

NOTES:

- 1) STATIONING REFERS TO STREET CENTERLINE.
- 2) DIMENSIONS TO BACK OF CURB UNLESS OTHERWISE NOTED.
- 3) TOP OF CURB ELEVATIONS ARE TO D412 MODIFIED MOUNTABLE CURB SECTION.
- 4) INSTALL B618 CONCRETE CURB AND GUTTER AT CURB RETURNS. TRANSITION TO D412 CURB IN 5 FEET BEYOND CURB PC. AND AT INTERMEDIATE CATCH BASINS.
- 5) WATER SERVICES MAY BE INSTALLED IN THE SAME TRENCH PARALLEL WITH THE SANITARY SERVICES ON A BENCH A MINIMUM OF 18 INCHES ABOVE THE TOP OF SANITARY SERVICES.
- 6) WHEN SIDEWALK WILL EXIST NEXT TO R/W, EXTEND WATER AND SANITARY SERVICES 10' BEYOND R/W INTO LOTS.

☐ DENOTES INSULATION

NOTE: CENTERLINE STREET ELEVATIONS WERE NOT SHOT AFTER CONSTRUCTION.



REV. NO.	DATE	DESCRIPTION
1	9/9/02	CITY COMMENTS
2	2/24/03	RECORD DRAWINGS

DATE:	8/2/02
DESIGN BY:	TM, CSA
DRAWN BY:	CSA
CHECKED BY:	TM
DWG FILE:	10-RIVSTM
TEXT FILE:	NONE
FILE NO.:	6521.30-03

I hereby certify that this plan, specification, or report was prepared by me or under my direct supervision and that I am a duly Licensed Professional Engineer under the laws of the state of Minnesota.

Signature: *[Signature]*
 Date: 8/2/02 Reg. No. 20363

John Oliver & Associates, Inc.
 Civil Engineering, Land Surveying, Land Planning
 550 Dodge Avenue
 Elk River, Minnesota 55980
 763-441-2072 FAX 763-441-6665
 Offices in: Elk River, Burnsville and Brooklyn Center, Minnesota

MISSISSIPPI OAKS 3RD ADDITION
 ELK RIVER, MN
 FOR
MISSISSIPPI OAKS DEVELOPMENT CORP.
 STREET & STORM SEWER
 RIVERVIEW COURT

SHEET NO. 10 OF 13