

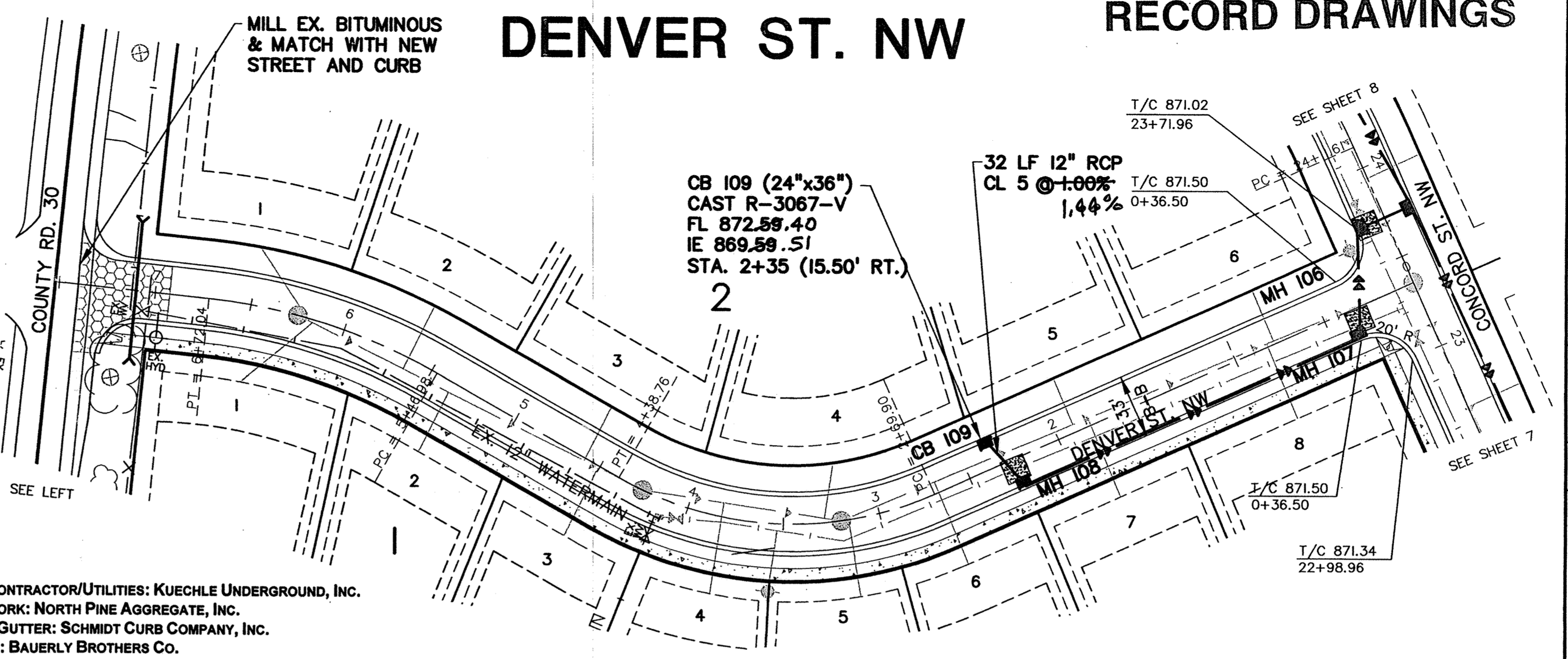
PRIME CONTRACTOR/UTILITIES: KUECHLE UNDERGROUND, INC.
 EARTHWORK: NORTH PINE AGGREGATE, INC.
 CURB & GUTTER: SCHMIDT CURB COMPANY, INC.
 STREETS: BAUERLY BROTHERS CO.
 INSPECTION: HOWARD R. GREEN, INC.
 SURVEY: JOHN OLIVER & ASSOCIATES, INC.
 RECORD DRAWINGS: FRED FRITSCHEL, JOHN OLIVER & ASSOCIATES, INC.
 CONSTRUCTED: 2002



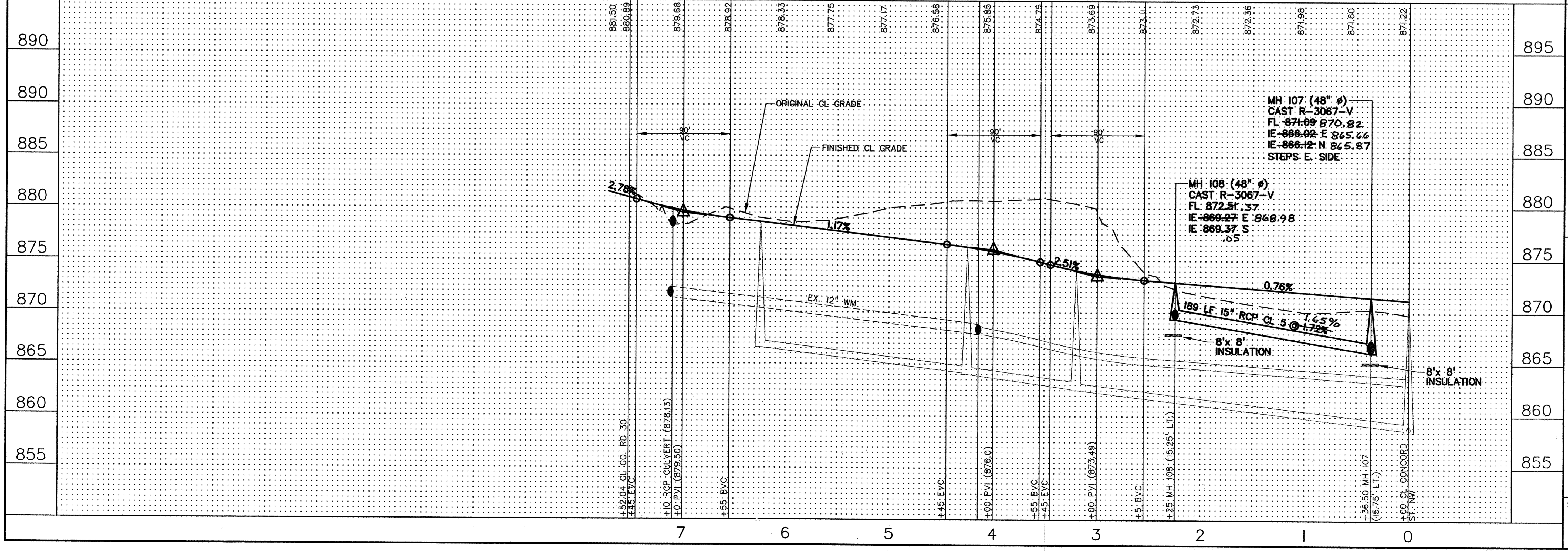
DENOTES INSULATION

NOTE: CENTERLINE STREET ELEVATIONS WERE NOT SHOT AFTER CONSTRUCTION.

DENVER ST. NW RECORD DRAWINGS



- NOTES:**
- STATIONING REFERS TO STREET CENTERLINE.
 - DIMENSIONS TO BACK OF CURB UNLESS OTHERWISE NOTED.
 - TOP OF CURB ELEVATIONS ARE TO D412 MODIFIED MOUNTABLE CURB SECTION.
 - INSTALL B618 CONCRETE CURB AND GUTTER AT CURB RETURNS. TRANSITION TO D412 CURB IN 5 FEET BEYOND CURB PC. AND AT INTERMEDIATE CATCH BASINS.
 - WATER SERVICES MAY BE INSTALLED IN THE SAME TRENCH PARALLEL WITH THE SANITARY SERVICES ON A BENCH A MINIMUM OF 18 INCHES ABOVE THE TOP OF SANITARY SERVICES.
 - WHEN SIDEWALK WILL EXIST NEXT TO R/W, EXTEND WATER AND SANITARY SERVICES 10' BEYOND R/W INTO LOTS.



| REV. NO. | DATE | DESCRIPTION |
|----------|---------|-----------------|
| 1 | 9/9/02 | CITY COMMENTS |
| 2 | 9/25/02 | CITY COMMENTS |
| 3 | 2/22/03 | RECORD DRAWINGS |

| | |
|-------------|------------|
| DATE: | 8/2/02 |
| DESIGN BY: | TM, CSA |
| DRAWN BY: | CSA |
| CHECKED BY: | TM |
| DWG FILE: | 9-DENNSTM |
| TEXT FILE: | NONE |
| FILE NO.: | 6521.30-03 |

I hereby certify that this plan, specification, or report was prepared by me or under my direct supervision and that I am a duly Licensed Professional Engineer under the laws of the state of Minnesota.

Signature: Date: 8/2/02 Reg. No. 20383

| |
|--|
| John Oliver & Associates, Inc. Civil Engineering, Land Surveying, Land Planning 580 Dodge Avenue Elk River, Minnesota 55330 763-441-2072 FAX 763-441-5665 Offices in: Elk River, Burnsville and Brooklyn Center, Minnesota |
|--|

| |
|--|
| MISSISSIPPI OAKS 3RD ADDITION ELK RIVER, MN FOR MISSISSIPPI OAKS DEVELOPMENT CORP. STREET & STORM SEWER DENVER ST. NW / CO. RD 30 |
|--|

| |
|----------------------|
| SHEET NO. 9 OF 13 |
|----------------------|