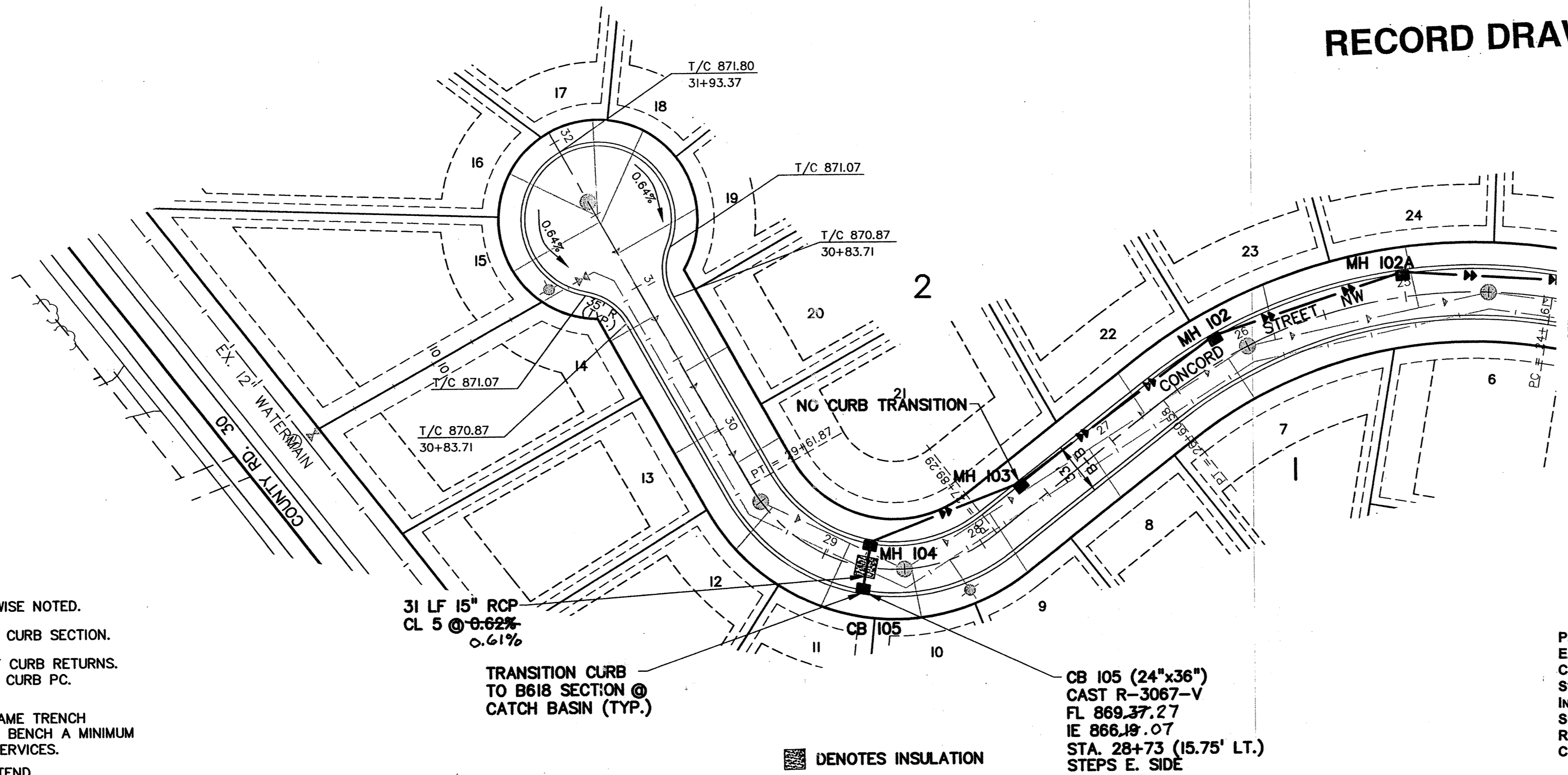


CONCORD ST. NW

RECORD DRAWINGS



- NOTES:**
- 1) STATIONING REFERS TO STREET CENTERLINE.
 - 2) DIMENSIONS TO BACK OF CURB UNLESS OTHERWISE NOTED.
 - 3) TOP OF CURB ELEVATIONS ARE TO MOUNTABLE CURB SECTION.
 - 4) INSTALL B618 CONCRETE CURB AND GUTTER AT CURB RETURNS. TRANSITION TO MOUNTABLE IN 5 FEET BEYOND CURB PC AND AT INTERMEDIATE CATCH BASINS.
 - 5) WATER SERVICES MAY BE INSTALLED IN THE SAME TRENCH PARALLEL WITH THE SANITARY SERVICES ON A BENCH A MINIMUM OF 18 INCHES ABOVE THE TOP OF SANITARY SERVICES.
 - 6) WHEN SIDEWALK WILL EXIST NEXT TO R/W, EXTEND WATER AND SANITARY SERVICES 10' BEYOND R/W INTO LOTS.

NOTE: CENTERLINE STREET ELEVATIONS WERE NOT SHOT AFTER CONSTRUCTION.

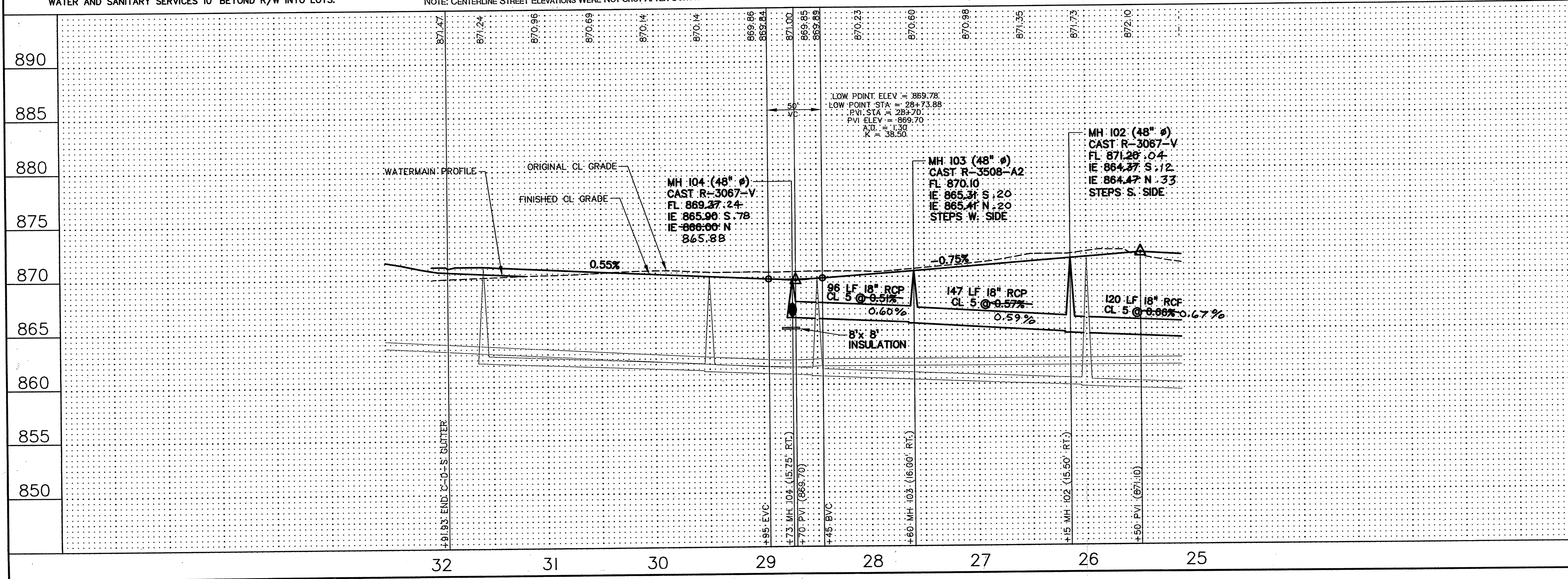
PRIME CONTRACTOR/UTILITIES: KUECHLE UNDERGROUND, INC.
 EARTHWORK: NORTH PINE AGGREGATE, INC.
 CURB & GUTTER: SCHMIDT CURB COMPANY, INC.
 STREETS: BAUERLY BROTHERS CO.
 INSPECTION: HOWARD R. GREEN, INC.
 SURVEY: JOHN OLIVER & ASSOCIATES, INC.
 RECORD DRAWINGS: FRED FRITSCHEL, JOHN OLIVER & ASSOCIATES, INC.
 CONSTRUCTED: 2002

31 LF 15" RCP
 CL 5 @ 0.62%
 0.61%

TRANSITION CURB
 TO B618 SECTION @
 CATCH BASIN (TYP.)

■ DENOTES INSULATION

CB 105 (24"x36")
 CAST R-3067-V
 FL 869.37.27
 IE 866.18.07
 STA. 28+73 (15.75' LT.)
 STEPS E. SIDE



890	
885	
880	
875	
870	
865	
860	
855	
850	

John Oliver & Associates, Inc.
 Civil Engineering, Land Surveying, Land Planning
 580 Dodge Avenue
 Elk River, Minnesota 55330
 763-441-2072 FAX 763-441-5665
 Offices in: Elk River, Burnsville
 and Brooklyn Center, Minnesota

MISSISSIPPI OAKS 3RD ADDITION
 ELK RIVER, MN
 FOR
 MISSISSIPPI OAKS DEVELOPMENT CORP.
 STREET & STORM SEWER
 CONCORD ST. NW

SHEET NO. 8 OF 13

REV. NO.	DATE	DESCRIPTION
1	9/9/02	CITY COMMENTS
2	2/26/03	RECORD DRAWINGS

DATE: 8/2/02
 DESIGN BY: TM, CSA
 DRAWN BY: CSA
 CHECKED BY: TM
 DWG FILE: B-CONCSTM
 TEXT FILE: NONE
 FILE NO.: 6521.30-03

I hereby certify that this plan, specification, or report was prepared by me or under my direct supervision and that I am a duly Licensed Professional Engineer under the laws of the state of Minnesota.
 Signature: [Signature]
 Date: 8/2/02 Reg. No. 20383

DRAWING NUMBER

DRAWING NUMBER

DRAWING NUMBER

DRAWING NUMBER
 MISS3.02
 8

SAICO PRODUCTS • NEW HOPE, MINNESOTA
 PRODUCED BY PART NUMBER 6592
 SAICO PRODUCTS • NEW HOPE, MINNESOTA
 PRODUCED BY PART NUMBER 6592
 SAICO PRODUCTS • NEW HOPE, MINNESOTA
 PRODUCED BY PART NUMBER 6592