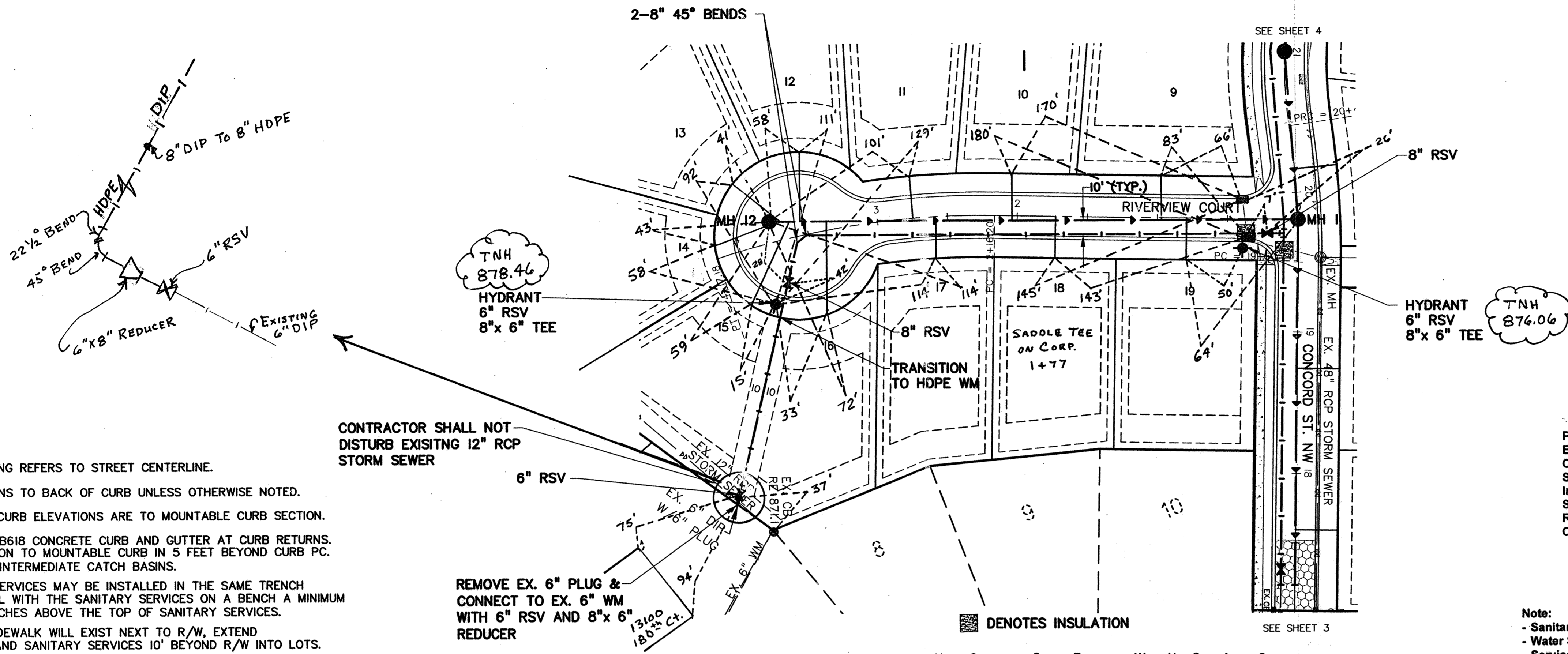
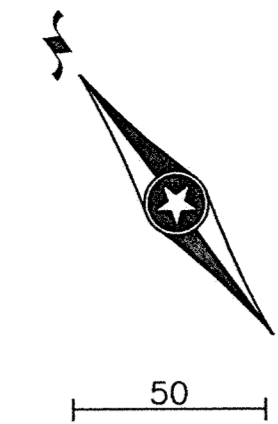


RIVERVIEW COURT

RECORD DRAWINGS



NOTES:

- STATIONING REFERS TO STREET CENTERLINE.
- DIMENSIONS TO BACK OF CURB UNLESS OTHERWISE NOTED.
- TOP OF CURB ELEVATIONS ARE TO MOUNTABLE CURB SECTION.
- INSTALL B618 CONCRETE CURB AND GUTTER AT CURB RETURNS. TRANSITION TO MOUNTABLE CURB IN 5 FEET BEYOND CURB PC. AND AT INTERMEDIATE CATCH BASINS.
- WATER SERVICES MAY BE INSTALLED IN THE SAME TRENCH PARALLEL WITH THE SANITARY SERVICES ON A BENCH A MINIMUM OF 18 INCHES ABOVE THE TOP OF SANITARY SERVICES.
- WHEN SIDEWALK WILL EXIST NEXT TO R/W, EXTEND WATER AND SANITARY SERVICES 10' BEYOND R/W INTO LOTS.

CONTRACTOR SHALL NOT DISTURB EXISTING 12" RCP STORM SEWER

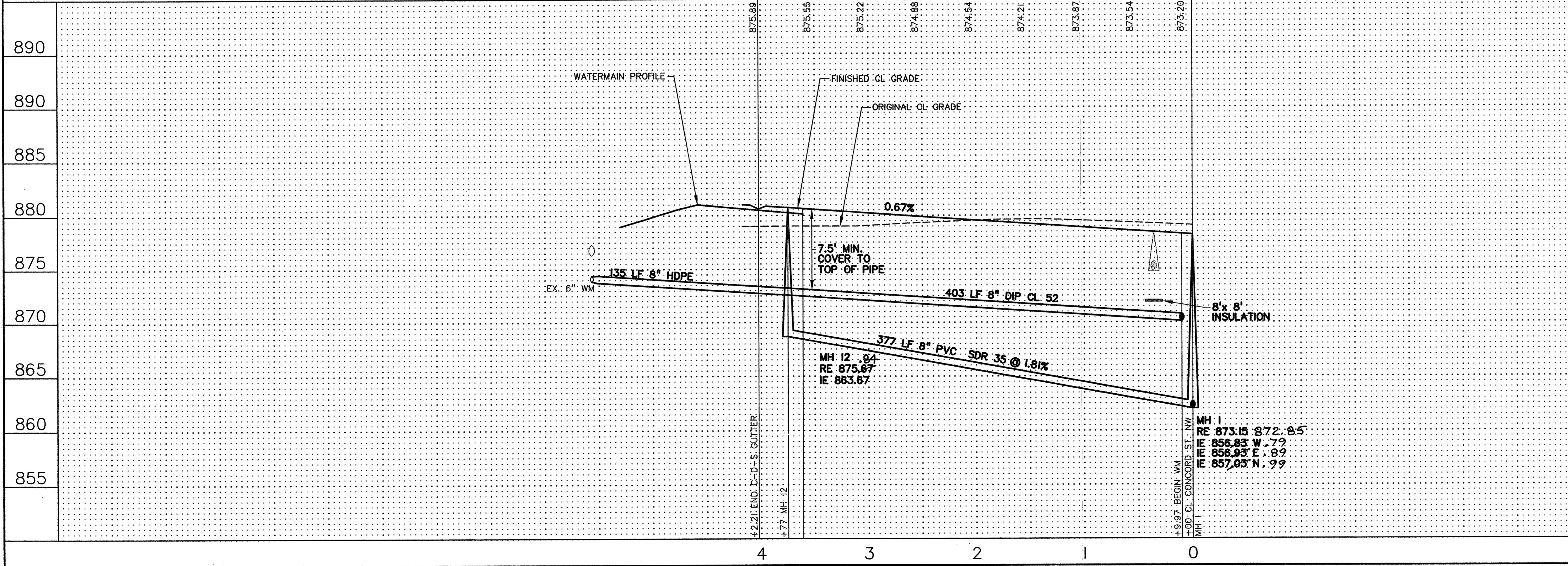
REMOVE EX. 6" PLUG & CONNECT TO EX. 6" WM WITH 6" RSV AND 8" x 6" REDUCER

■ DENOTES INSULATION

PRIME CONTRACTOR/UTILITIES: KUECHLE UNDERGROUND, INC.
 EARTHWORK: NORTH PINE AGGREGATE, INC.
 CURB & GUTTER: SCHMIDT CURB COMPANY, INC.
 STREETS: BAUERLY BROTHERS CO.
 INSPECTION: HOWARD R. GREEN, INC.
 SURVEY: JOHN OLIVER & ASSOCIATES, INC.
 RECORD DRAWINGS: FRED FRITSCHEL, JOHN OLIVER & ASSOCIATES, INC.
 CONSTRUCTED: 2002

- Note:
- Sanitary Sewer Services Are 4" PVC and Have a 5' (+/-) Riser on End
 - Water Services Are 1" Copper
 - Service Ties Are to Water Curb Stop

NOTE: CENTERLINE STREET ELEVATIONS WERE NOT SHOT AFTER CONSTRUCTION.



890	895
890	890
885	885
880	880
875	875
870	870
865	865
860	860
855	855

John Oliver & Associates, Inc.
 Civil Engineering, Land Surveying, Land Planning
 580 Dodge Avenue
 Elk River, Minnesota 55330
 763-441-2072 FAX 763-441-5665
 Offices in: Elk River, Burnsville
 and Brooklyn Center, Minnesota

MISSISSIPPI OAKS 3RD ADDITION
 ELK RIVER, MN
 FOR
 MISSISSIPPI OAKS DEVELOPMENT CORP.
 SANITARY SEWER & WATERMAIN
 RIVERVIEW COURT

SHEET NO. 6 OF 13

REV. NO.	DATE	DESCRIPTION
1	8/2/02	DATE: 8/2/02
2	9/9/02	DESIGN BY: TM, CSA
3	2/26/03	DRAWN BY: CSA
		CITY COMMENTS: RECORD DRAWING
		CHECKED BY: TM
		DWG FILE: 4-CONC
		TEXT FILE: NONE
		FILE NO.: 6521.30-03

I hereby certify that this plan, specification, or report was prepared by me or under my direct supervision and that I am a duly Licensed Professional Engineer under the laws of the state of Minnesota.
 Signature: *[Signature]*
 Date: 8/2/02 Reg. No. 20383