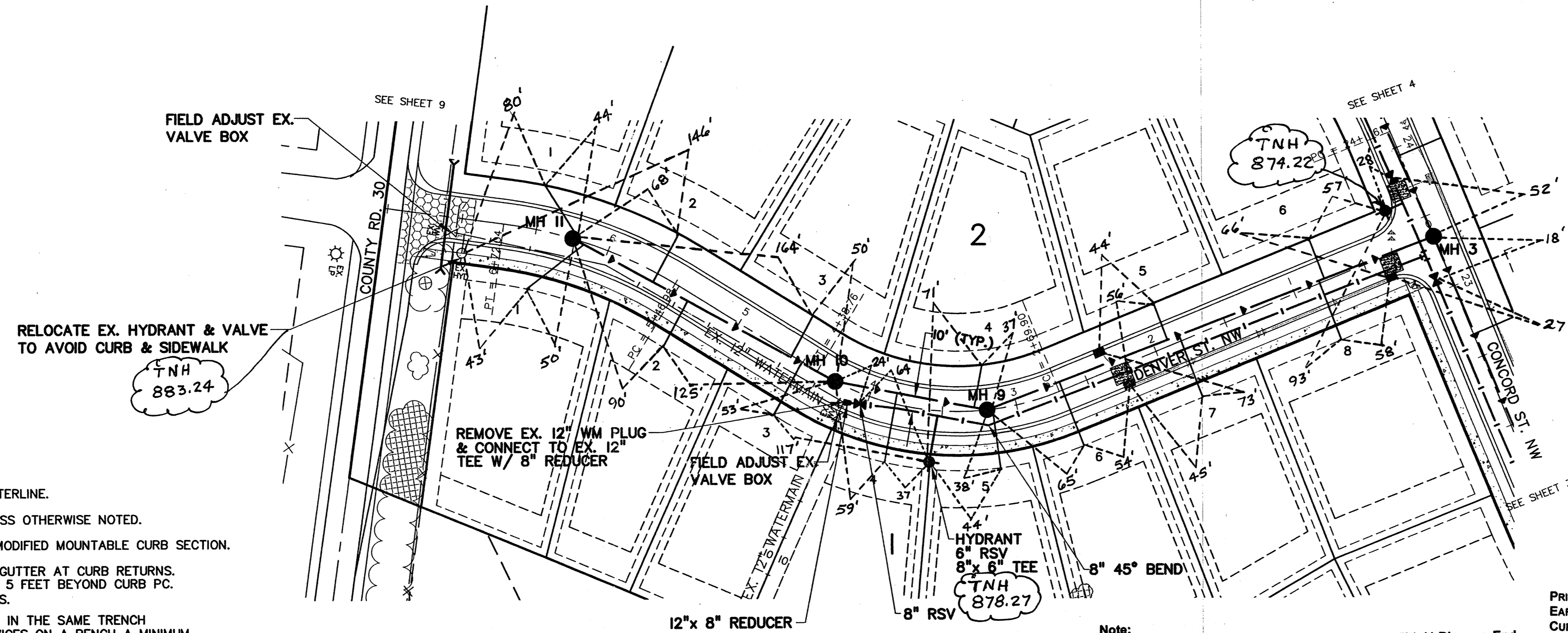
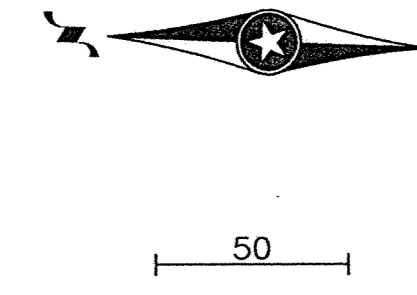


# DENVER ST. NW

# RECORD DRAWINGS



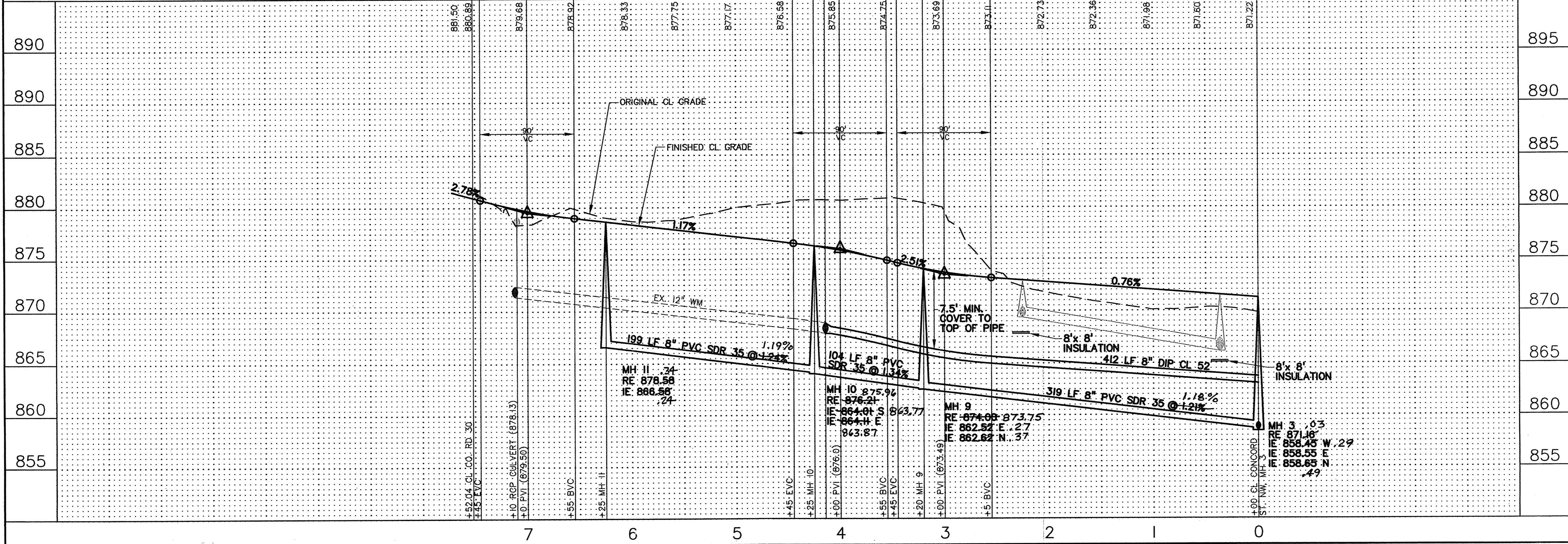
- NOTES:**
- 1) STATIONING REFERS TO STREET CENTERLINE.
  - 2) DIMENSIONS TO BACK OF CURB UNLESS OTHERWISE NOTED.
  - 3) TOP OF CURB ELEVATIONS ARE TO MODIFIED MOUNTABLE CURB SECTION.
  - 4) INSTALL B618 CONCRETE CURB AND GUTTER AT CURB RETURNS. TRANSITION TO MOUNTABLE CURB IN 5 FEET BEYOND CURB PC. AND AT INTERMEDIATE CATCH BASINS.
  - 5) WATER SERVICES MAY BE INSTALLED IN THE SAME TRENCH PARALLEL WITH THE SANITARY SERVICES ON A BENCH A MINIMUM OF 18 INCHES ABOVE THE TOP OF SANITARY SERVICES.
  - 6) WHEN SIDEWALK WILL EXIST NEXT TO R/W, EXTEND WATER AND SANITARY SERVICES 10' BEYOND R/W INTO LOTS.

PRIME CONTRACTOR/UTILITIES: KUECHLE UNDERGROUND, INC.  
 EARTHWORK: NORTH PINE AGGREGATE, INC.  
 CURB & GUTTER: SCHMIDT CURB COMPANY, INC.  
 STREETS: BAUERLY BROTHERS CO.  
 INSPECTION: HOWARD R. GREEN, INC.  
 SURVEY: JOHN OLIVER & ASSOCIATES, INC.  
 RECORD DRAWINGS: FRED FRITSCHEL, JOHN OLIVER & ASSOCIATES, INC.  
 CONSTRUCTED: 2002

REV. NO.	DATE	DESCRIPTION
1	9/9/02	CITY COMMENTS
2	2/26/03	RECORD DRAWINGS

DATE: 8/2/02  
 DESIGN BY: TM, CSA  
 DRAWN BY: CSA  
 CHECKED BY: TM  
 DWG FILE: 4-CONC  
 TEXT FILE: NONE  
 FILE NO.: 6821.30-03

Signature: [Signature]  
 Date: 8/2/02 Reg. No. 20383



**John Oliver & Associates, Inc.**  
 Civil Engineering, Land Surveying, Land Planning  
 580 Dodge Avenue  
 Elk River, Minnesota 55330  
 763-441-2072 FAX 763-441-5666  
 Offices in: Elk River, Burnsville  
 and Brooklyn Center, Minnesota

**MISSISSIPPI OAKS 3RD ADDITION**  
 ELK RIVER, MN  
 FOR  
**MISSISSIPPI OAKS DEVELOPMENT CORP.**  
 SANITARY SEWER & WATERMAIN  
 DENVER ST. NW

SHEET NO. 5 OF 13

G:\Land Projects\213527 - 1000\Paper\3001.dwg, 08/15/02 03:10:33 PM, User: joliver, Plot: 213527.dwg, PLOT3, cnc