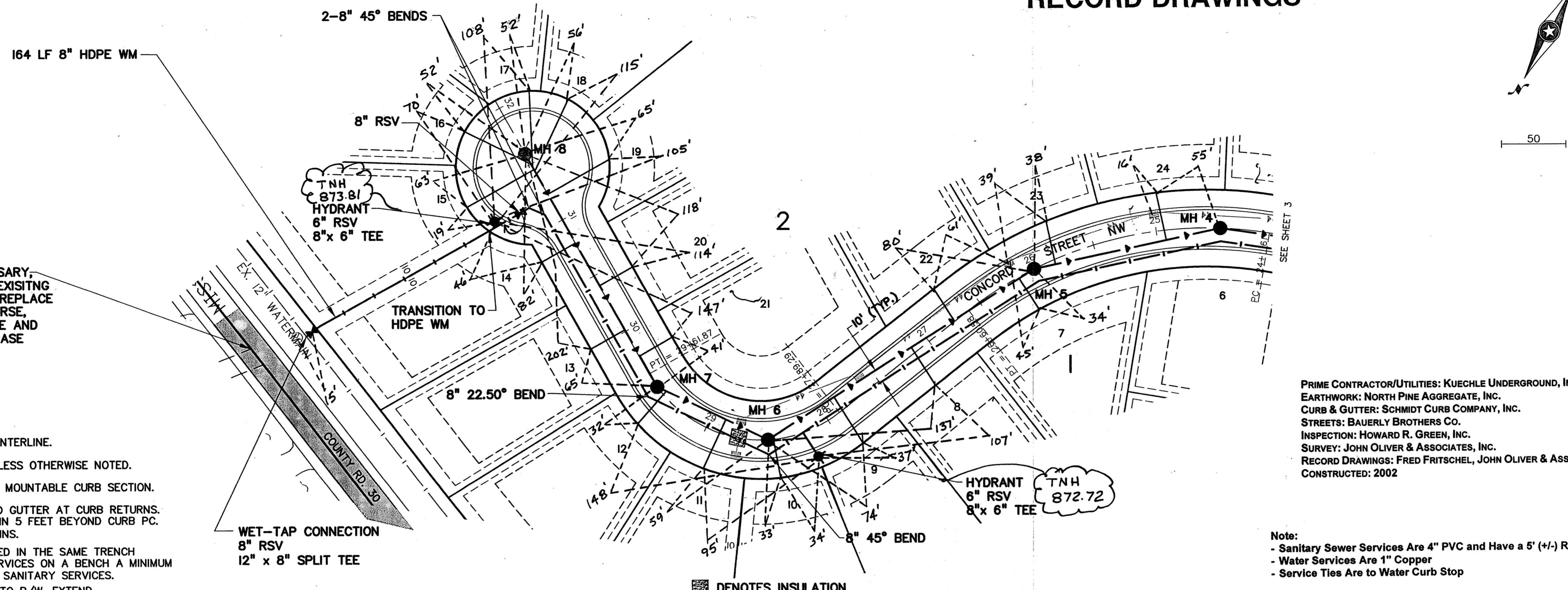


# CONCORD ST. NW

## RECORD DRAWINGS



IF BIT. REMOVAL IS NECESSARY, CONTRACTOR SHALL MILL EXISTING EDGE OF BITUMINOUS AND REPLACE W/ 1-1/2" BIT. WEAR COURSE, 2" BIT. NON-WEAR COURSE AND 6" CLASS 5 AGGREGATE BASE

- NOTES:**
- 1) STATIONING REFERS TO STREET CENTERLINE.
  - 2) DIMENSIONS TO BACK OF CURB UNLESS OTHERWISE NOTED.
  - 3) TOP OF CURB ELEVATIONS ARE TO MOUNTABLE CURB SECTION.
  - 4) INSTALL B618 CONCRETE CURB AND GUTTER AT CURB RETURNS. TRANSITION TO MOUNTABLE CURB IN 5 FEET BEYOND CURB PC. AND AT INTERMEDIATE CATCH BASINS.
  - 5) WATER SERVICES MAY BE INSTALLED IN THE SAME TRENCH PARALLEL WITH THE SANITARY SERVICES ON A BENCH A MINIMUM OF 18 INCHES ABOVE THE TOP OF SANITARY SERVICES.
  - 6) WHEN SIDEWALK WILL EXIST NEXT TO R/W, EXTEND WATER AND SANITARY SERVICES 10' BEYOND R/W INTO LOTS.

WET-TAP CONNECTION  
8" RSV  
12" x 8" SPLIT TEE

PRIME CONTRACTOR/UTILITIES: KUECHLE UNDERGROUND, INC.  
EARTHWORK: NORTH PINE AGGREGATE, INC.  
CURB & GUTTER: SCHMIDT CURB COMPANY, INC.  
STREETS: BAUERLY BROTHERS CO.  
INSPECTION: HOWARD R. GREEN, INC.  
SURVEY: JOHN OLIVER & ASSOCIATES, INC.  
RECORD DRAWINGS: FRED FRITSCHEL, JOHN OLIVER & ASSOCIATES, INC.  
CONSTRUCTED: 2002

Note:  
- Sanitary Sewer Services Are 4" PVC and Have a 5' (+/-) Riser on End  
- Water Services Are 1" Copper  
- Service Ties Are to Water Curb Stop

■ DENOTES INSULATION

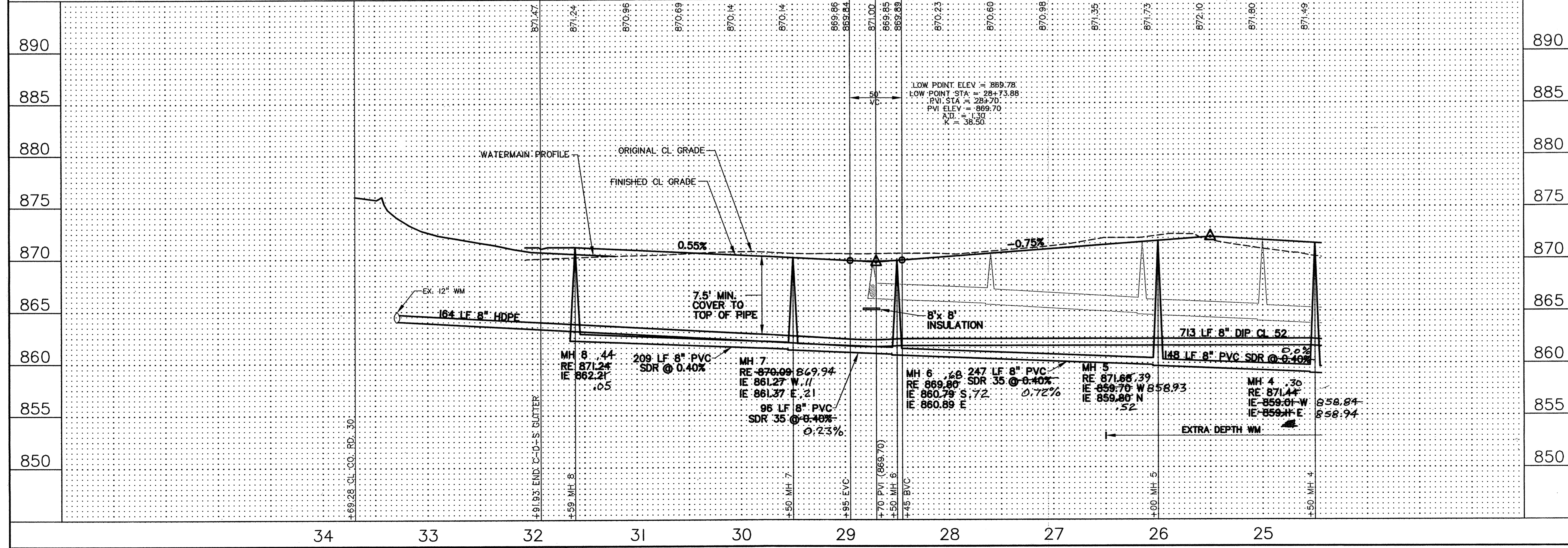
NOTE: CENTERLINE STREET ELEVATIONS WERE NOT SHOT AFTER CONSTRUCTION.

REV. NO.	DATE	DESCRIPTION
1	9/9/02	CITY COMMENTS
2	2/22/03	RECORD DRAWINGS

DATE: 8/2/02  
DESIGN BY: TM, CSA  
DRAWN BY: CSA  
CHECKED BY: TM  
DWG FILE: 4-COIC  
TEXT FILE: NONE  
FILE NO.: 6521-30-03

I hereby certify that this plan, specification, or report was prepared by me or under my direct supervision and that I am a duly Licensed Professional Engineer under the laws of the state of Minnesota.

Signature: [Signature]  
Date: 8/2/02 Reg. No. 20383



**John Oliver & Associates, Inc.**  
Civil Engineering, Land Surveying, Land Planning  
580 Dodge Avenue  
Elk River, Minnesota 55330  
763-441-2072 FAX 763-441-5665  
Offices in: Elk River, Burnsville and Brooklyn Center, Minnesota

**MISSISSIPPI OAKS 3RD ADDITION**  
ELK RIVER, MN  
FOR  
**MISSISSIPPI OAKS DEVELOPMENT CORP.**  
SANITARY SEWER & WATERMAIN  
CONCORD ST. NW

SHEET NO. 4 OF 13