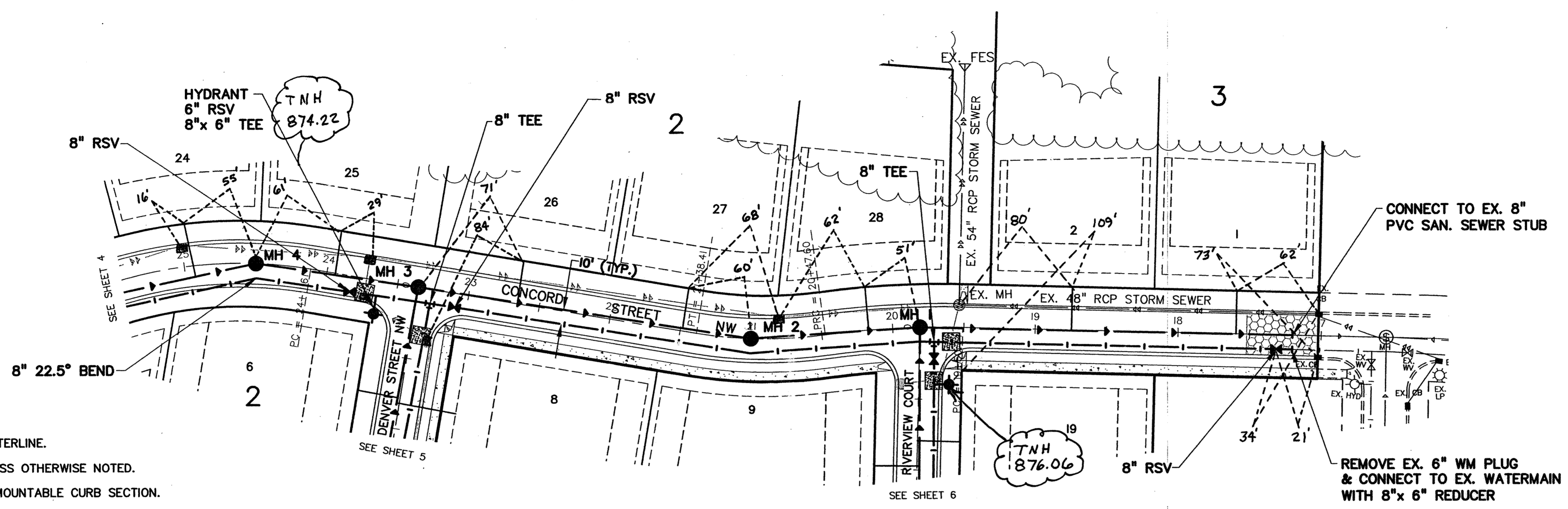
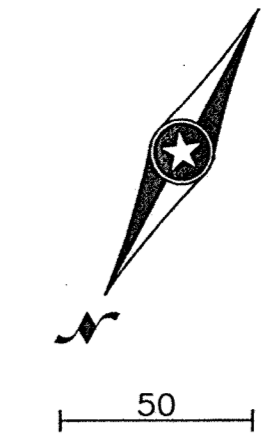


# CONCORD ST. NW

# RECORD DRAWINGS



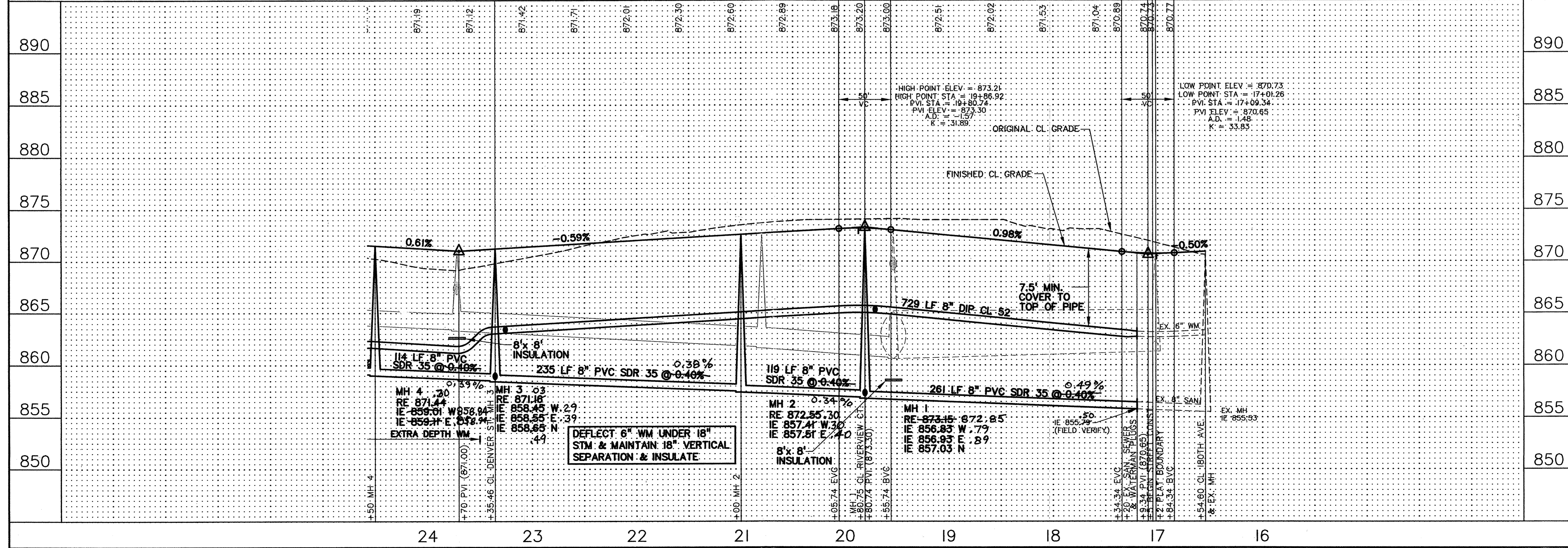
- NOTES:**
- 1) STATIONING REFERS TO STREET CENTERLINE.
  - 2) DIMENSIONS TO BACK OF CURB UNLESS OTHERWISE NOTED.
  - 3) TOP OF CURB ELEVATIONS ARE TO MOUNTABLE CURB SECTION.
  - 4) INSTALL B618 CONCRETE CURB AND GUTTER AT CURB RETURNS. TRANSITION TO MOUNTABLE CURB IN 5 FEET BEYOND CURB PC. AND AT INTERMEDIATE CATCH BASINS.
  - 5) WATER SERVICES MAY BE INSTALLED IN THE SAME TRENCH PARALLEL WITH THE SANITARY SERVICES ON A BENCH A MINIMUM OF 18 INCHES ABOVE THE TOP OF SANITARY SERVICES.
  - 6) WHEN SIDEWALK WILL EXIST NEXT TO R/W, EXTEND WATER AND SANITARY SERVICES 10' BEYOND R/W INTO LOTS.

- Notes:**
- Sanitary Sewer Services Are 4" PVC and Have a 5' (+/-) Riser on End
  - Water Services Are 1" Copper
  - Service Ties Are to Water Curb Stop

**PRIME CONTRACTOR/UTILITIES: KUECHLE UNDERGROUND, INC.**  
**EARTHWORK: NORTH PINE AGGREGATE, INC.**  
**CURB & GUTTER: SCHMIDT CURB COMPANY, INC.**  
**STREETS: BAUERLY BROTHERS CO.**  
**INSPECTION: HOWARD R. GREEN, INC.**  
**SURVEY: JOHN OLIVER & ASSOCIATES, INC.**  
**RECORD DRAWINGS: FRED FRITSCHEL, JOHN OLIVER & ASSOCIATES, INC.**  
**CONSTRUCTED: 2002**

DENOTES INSULATION

NOTE: CENTERLINE STREET ELEVATIONS WERE NOT SHOT AFTER CONSTRUCTION.



REV. NO.	DATE	DESCRIPTION
1	9/9/02	CITY COMMENTS
2	2/22/03	RECORD DRAWINGS

DATE:	8/2/02
DESIGN BY:	TM, CSA
DRAWN BY:	CSA
CHECKED BY:	TM
DWG FILE:	3-CONC
TEXT FILE:	NONE
FILE NO.:	6521.30-03

I hereby certify that this plan, specification, or report was prepared by me or under my direct supervision and that I am a duly Licensed Professional Engineer under the laws of the state of Minnesota.

Signature: Date: 8/2/02 Reg. No. 20383

**John Oliver & Associates, Inc.**  
 Civil Engineering, Land Surveying, Land Planning  
 580 Dodge Avenue  
 Elk River, Minnesota 55330  
 763-441-2072 FAX 763-441-5665  
 Offices in: Elk River, Burnsville and Brooklyn Center, Minnesota

---

**MISSISSIPPI OAKS 3RD ADDITION**  
 ELK RIVER, MN  
 FOR  
**MISSISSIPPI OAKS DEVELOPMENT CORP.**  
 SANITARY SEWER & WATERMAIN  
 CONCORD ST. NW

SHEET NO. **3** OF **13**