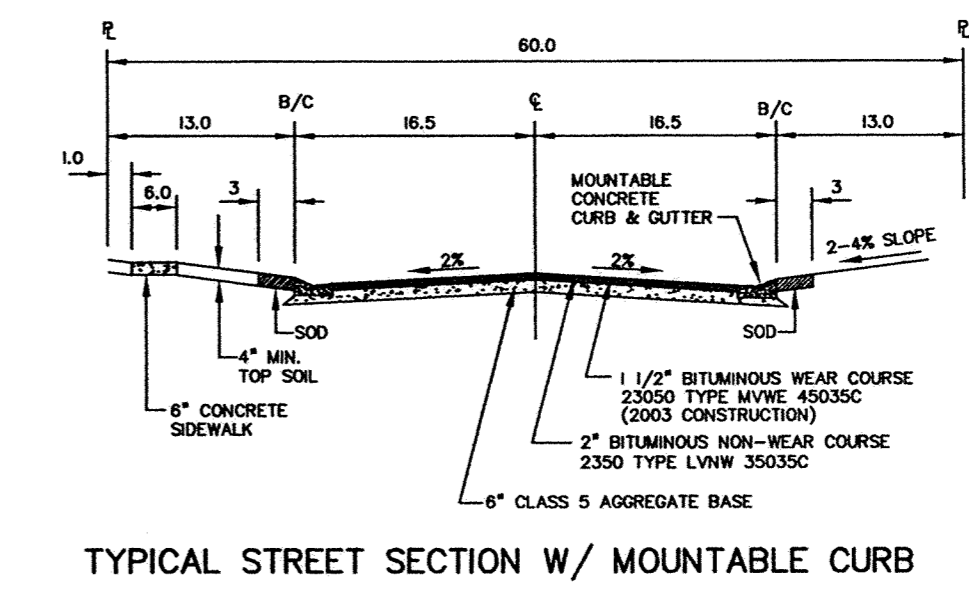
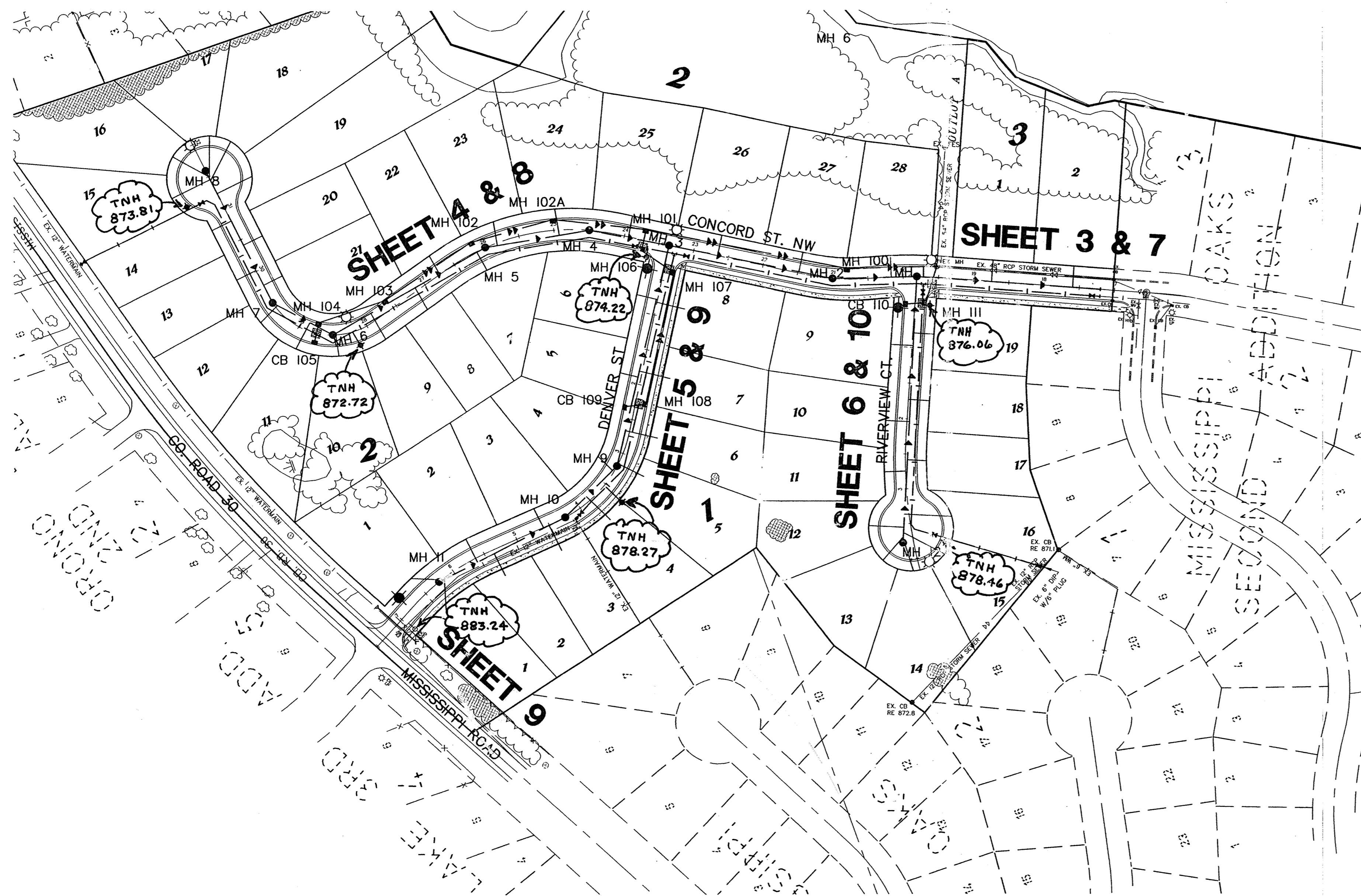


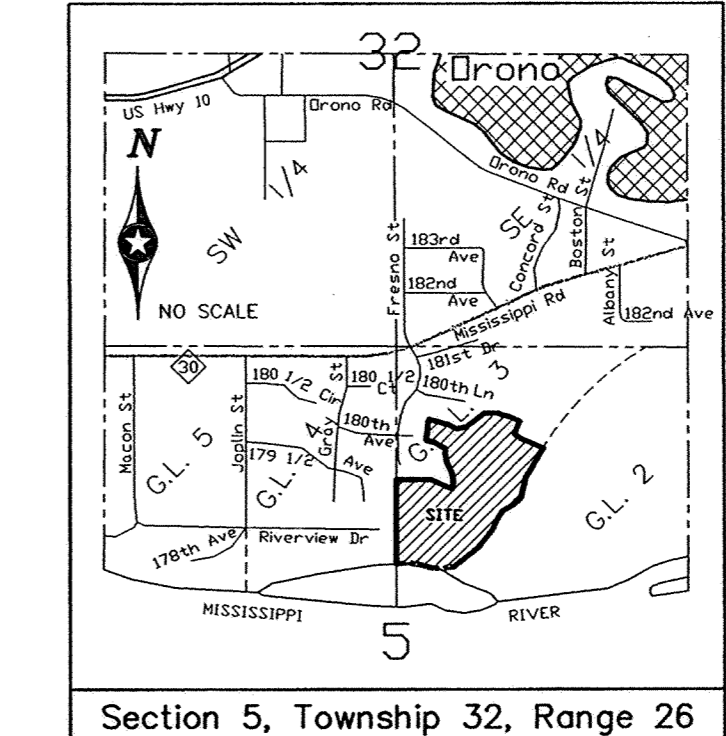
SANITARY SEWER, WATERMAIN, STORM SEWER AND STREET

RECORD DRAWINGS



TYPICAL STREET SECTION W/ MOUNTABLE CURB

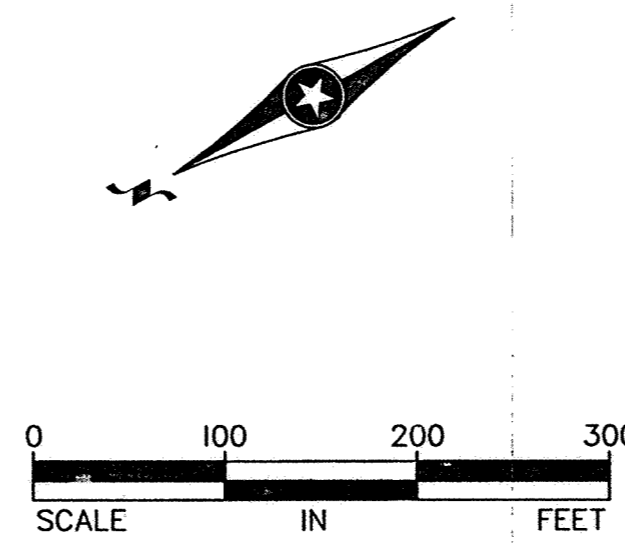
**City Of Elk River
Sherburne County, MN**



PRIME CONTRACTOR/UTILITIES: KUECHLE UNDERGROUND, INC.
EARTHWORK: NORTH PINE AGGREGATE, INC.
CURB & GUTTER: SCHMIDT CURB COMPANY, INC.
STREETS: BAUERLY BROTHERS CO.
INSPECTION: HOWARD R. GREEN, INC.
SURVEY: JOHN OLIVER & ASSOCIATES, INC.
RECORD DRAWINGS: FRED FRITSCHEL, JOHN OLIVER & ASSOCIATES, INC.
CONSTRUCTED: 2002

STREET SIGN LEGEND

- ☼ PROPOSED STREET LIGHT-5 EA.
- ◆ PROPOSED STREET NAME (CITY TYPICAL)-3 EA.



TITLE SHEET	1
SHEET INDEX	2
SANITARY SEWER & WATERMAIN PLANS	3-6
STREET & STORM SEWER PLANS	7-10
CO. RD. 30-RIGHT TURN LANE	9
DETAIL SHEETS	11-13

REV. NO.	DATE	DESCRIPTION
1	9/9/02	CITY COMMENTS
2	2/26/03	RECORD DRAWINGS

DESIGN BY: TM/CSA DRAWN BY: CSA CHECKED BY: TM DWG FILE: 2-INDEX TEXT FILE: NONE FILE NO.: 6521.30-03	I hereby certify that this plan, specification, or report was prepared by me or under my direct supervision and that I am a duly Licensed Professional Engineer under the laws of the state of Minnesota. Signature: <i>[Signature]</i> Date: 8/2/02 Reg. No. 20363	John Oliver & Associates, Inc. Civil Engineering, Land Surveying, Land Planning 580 Dodge Avenue Elk River, Minnesota 55330 763-441-2072 FAX 763-441-5665 Offices in: Elk River, Burnsville and Brooklyn Center, Minnesota
--	---	--

MISSISSIPPI OAKS 3RD ADDITION ELK RIVER, MN FOR MISSISSIPPI OAKS DEVELOPMENT CORP. SHEET INDEX, STREET SIGNS & STREET LIGHTING	SHEET NO. 2 OF 13
---	------------------------------------