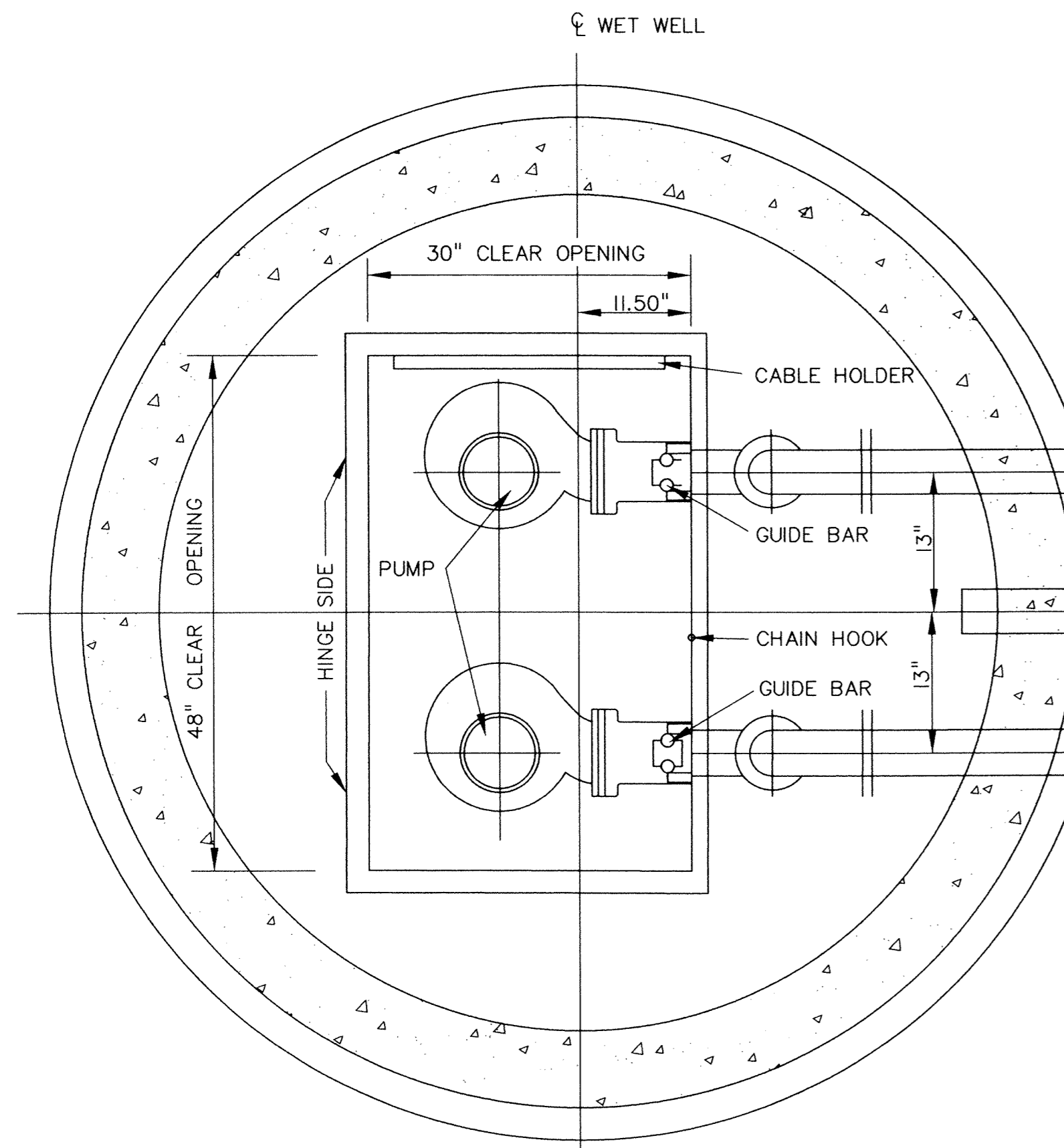
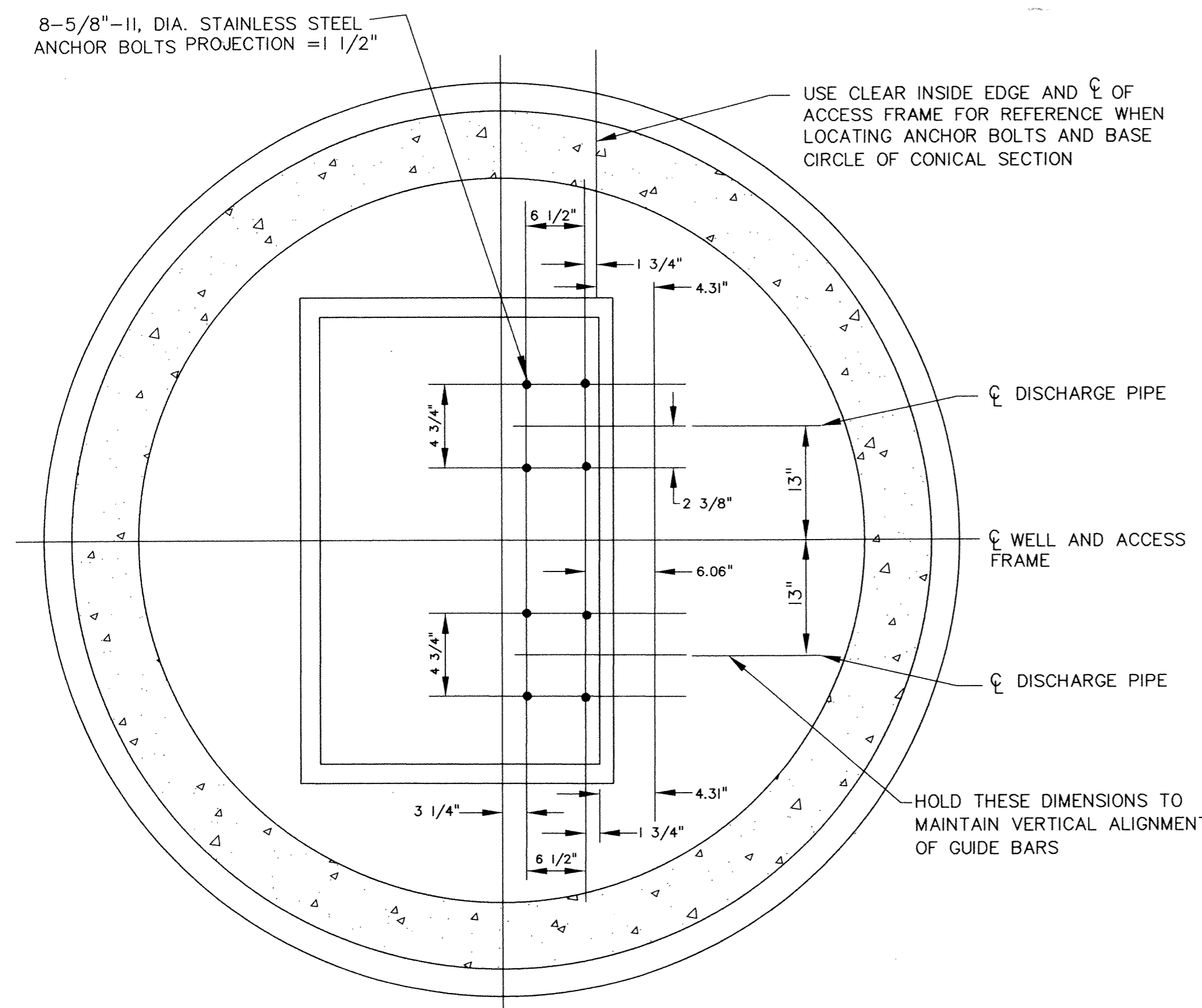


RECORD DRAWINGS

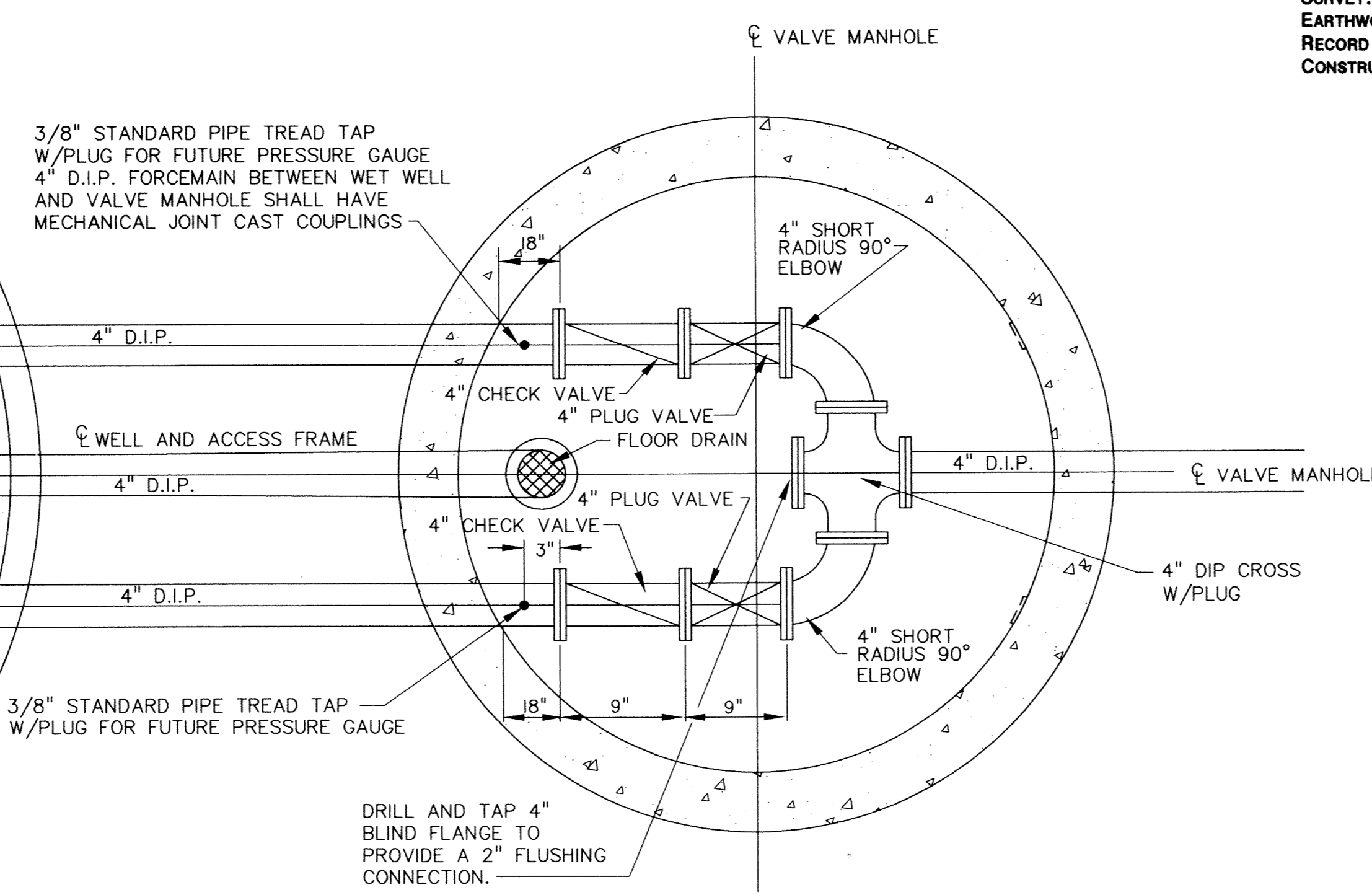
PRIME CONTRACTOR/UTILITIES: C. W. HOULE, INC.
 CURB & GUTTER: HALVORSON CONCRETE, INC.
 STREETS: BAUERLY BROS., INC.
 INSPECTION: RALPH BADER, HOWARD R. GREEN CO.
 SURVEY: JOHN OLIVER & ASSOCIATES, INC.
 EARTHWORK: SOIL-CON, INC.
 RECORD DRAWINGS: FRED FRITSCHEL, JOHN OLIVER & ASSOCIATES, INC.
 CONSTRUCTED: 1997



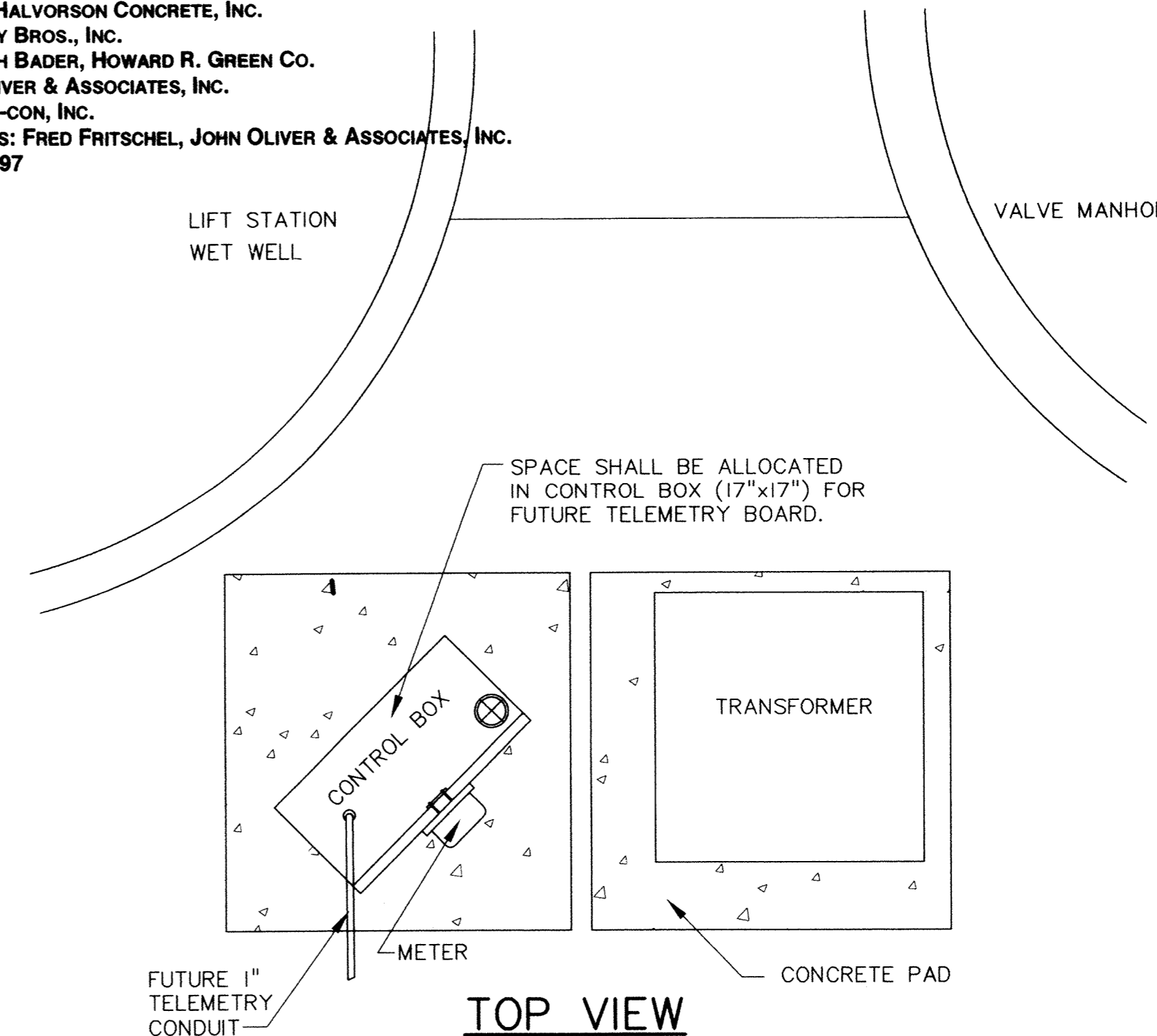
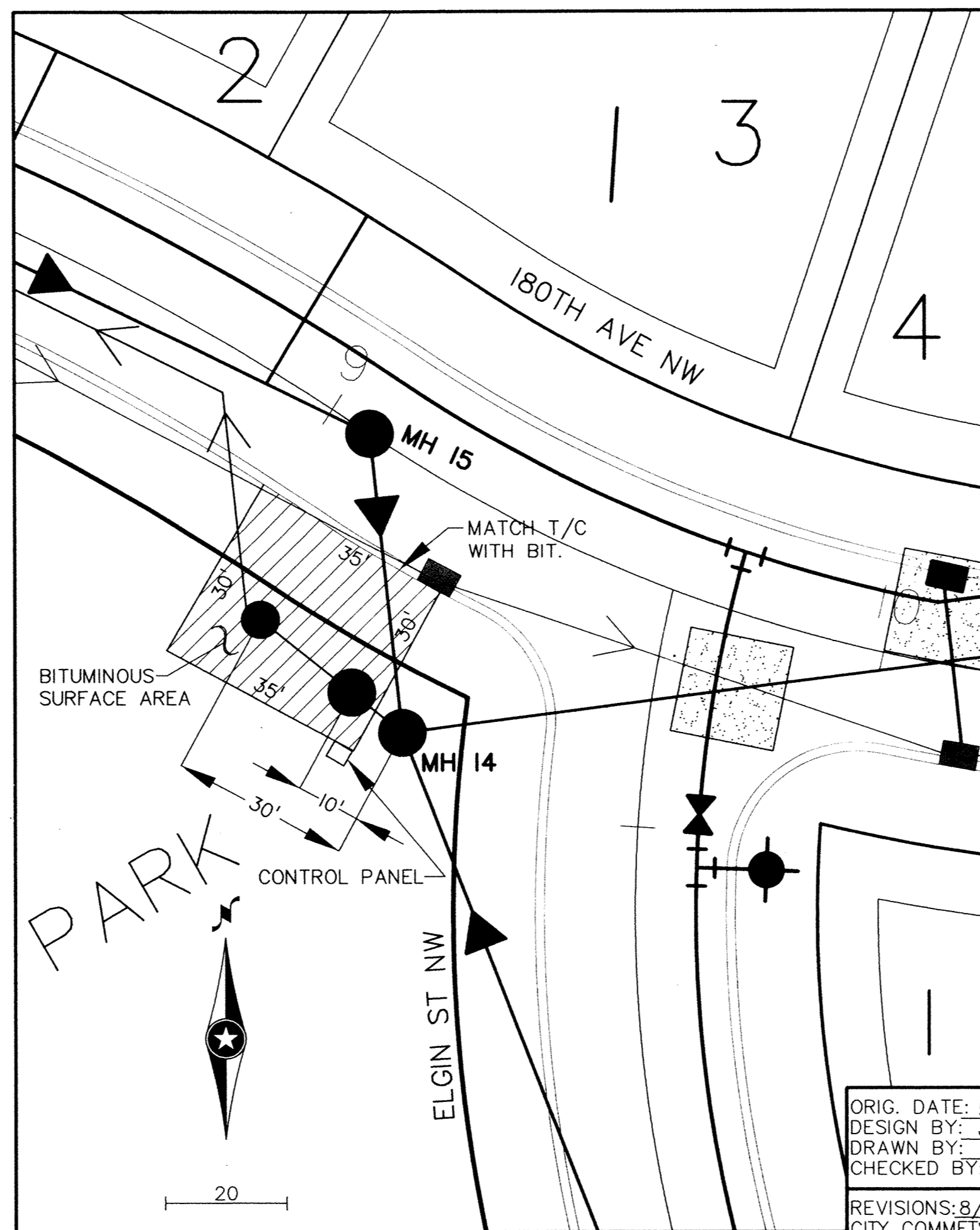
**PLAN VIEW-TOP
LIFT STATION-WET WELL**



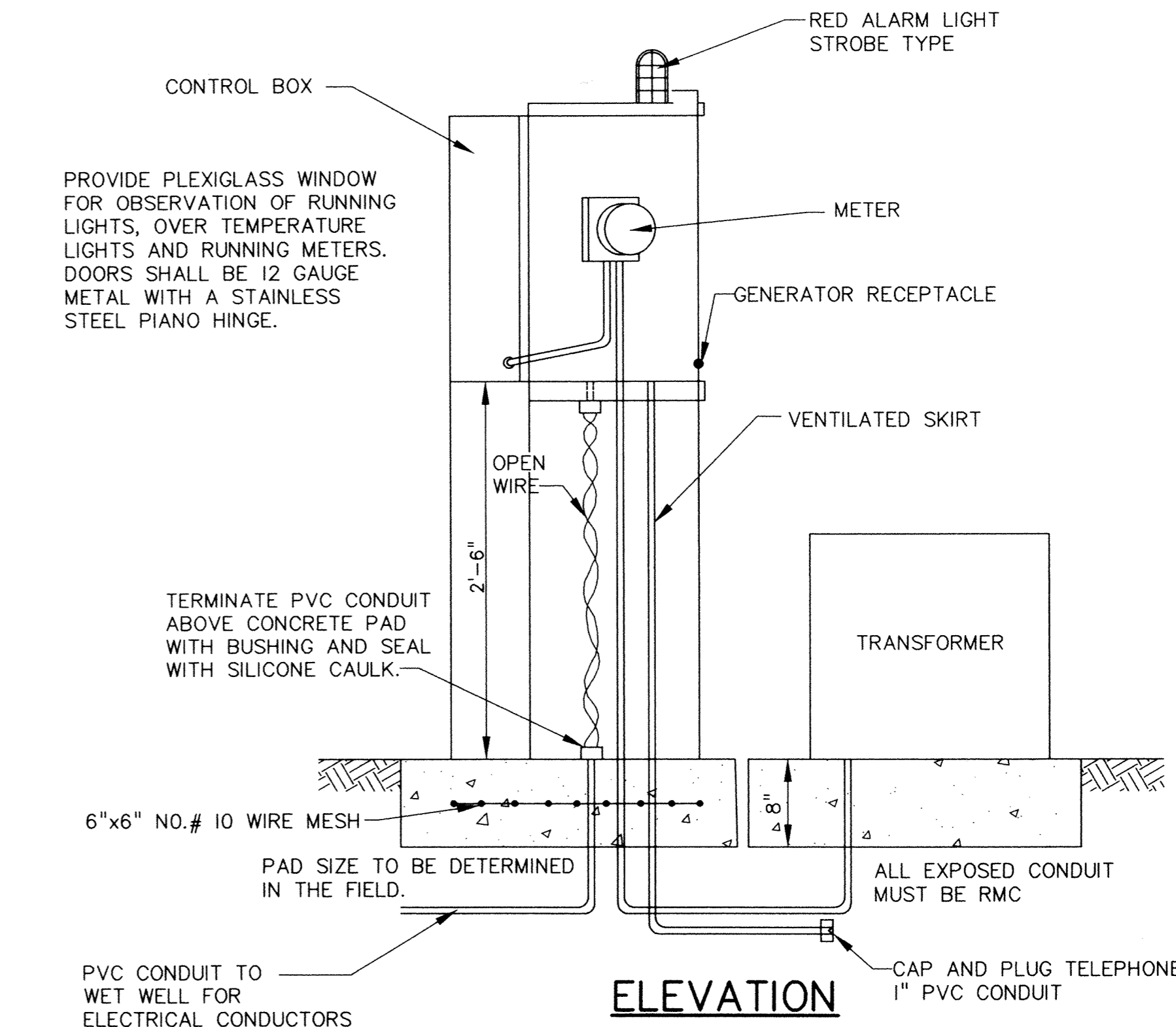
**PLAN VIEW-BASE
LIFT STATION-WET WELL**



**PLAN VIEW-TOP
VALVE MANHOLE**



**ELECTRICAL SERVICE CONNECTION
(LOCATION TO BE DETERMINED IN THE FIELD)**



ELECTRICAL SERVICE CONNECTION

ORIG. DATE: 5/5/95
 DESIGN BY: JR.PG.TM
 DRAWN BY: PG
 CHECKED BY: TM
 REVISIONS: 8/28/96
 CITY COMMENTS
 RECORD DRAWING
 12/22/97
 I hereby certify that this plan was prepared by me or under my direct supervision and that I am a duly Registered Professional Engineer under the laws of the State of Minnesota.
 Signed: *John Oliver*
 Date: 7/22/96 Reg. No. 20383

John Oliver & Associates, Inc.
 Civil Engineering, Land Surveying, Land Planning
 580 Dodge Avenue
 214 River, MN 55330
 (612)441-2072 (FAX)441-5665
 201 W. Travelers Trail, Suite 200
 Burnsville, MN 55337
 (612)894-3045 (FAX)894-3049

**MISSISSIPPI OAKS SECOND
ADDITION
LIFT STATION DETAIL**

DRAWING FILE: LIFT-STA.DWG TEXT FILE: SHEET 9 OF 12 FILE NO. 6521.20-03

DRAWING NUMBER

DRAWING NUMBER

DRAWING NUMBER

DRAWING NUMBER
MISS12.96