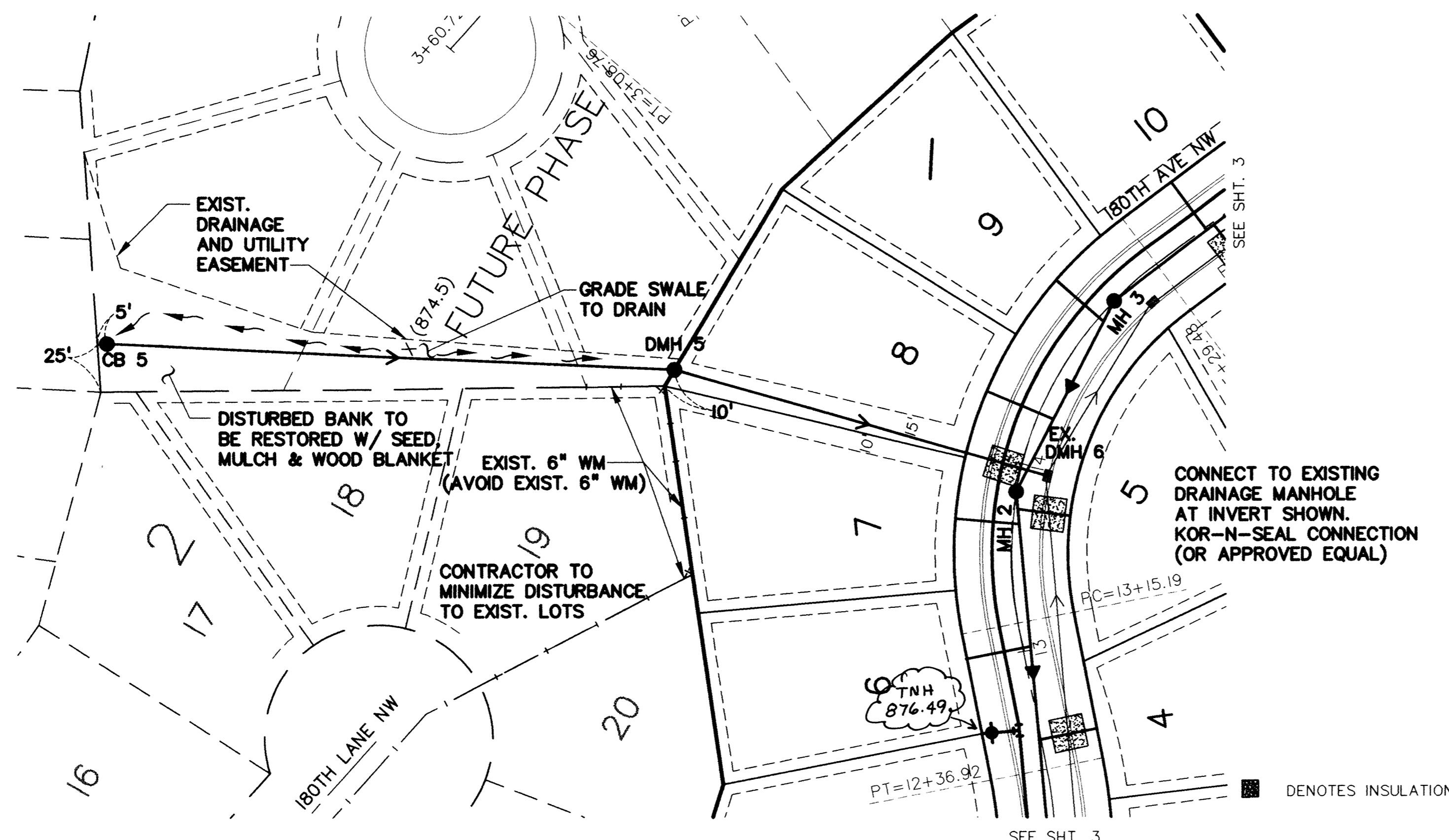
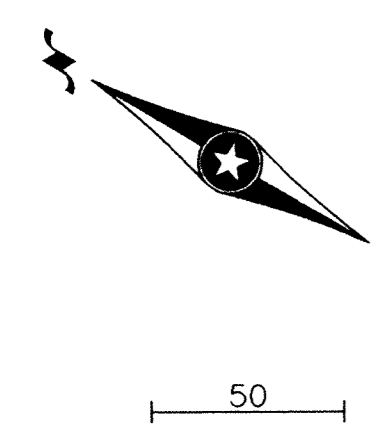
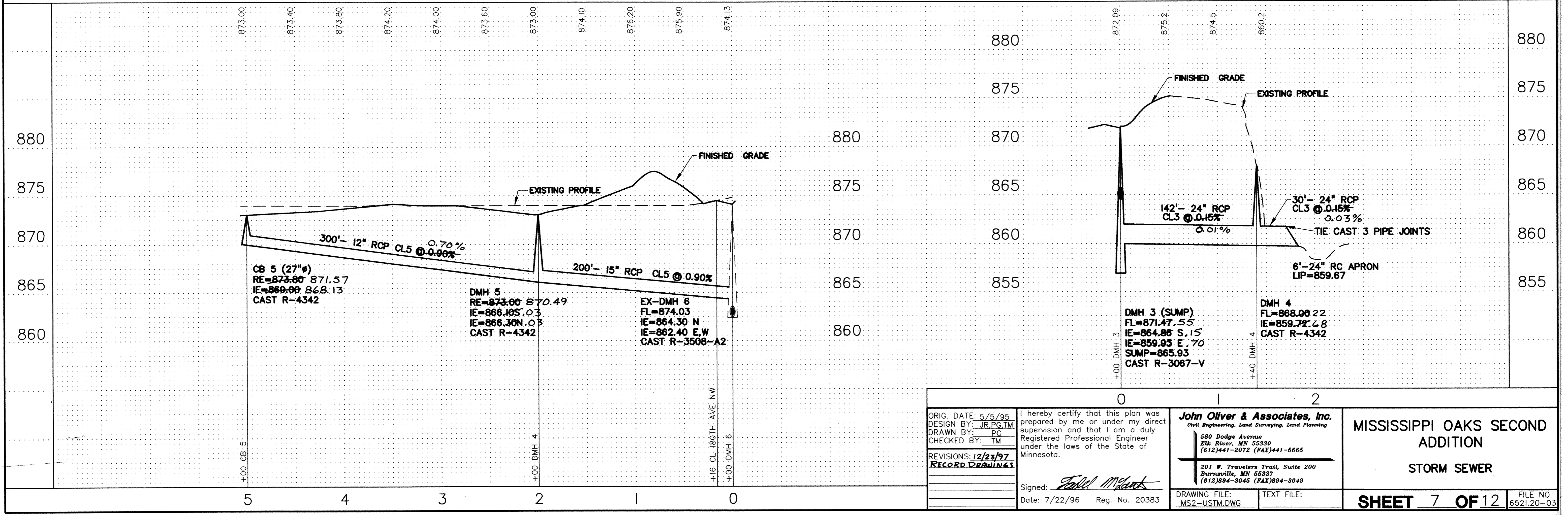
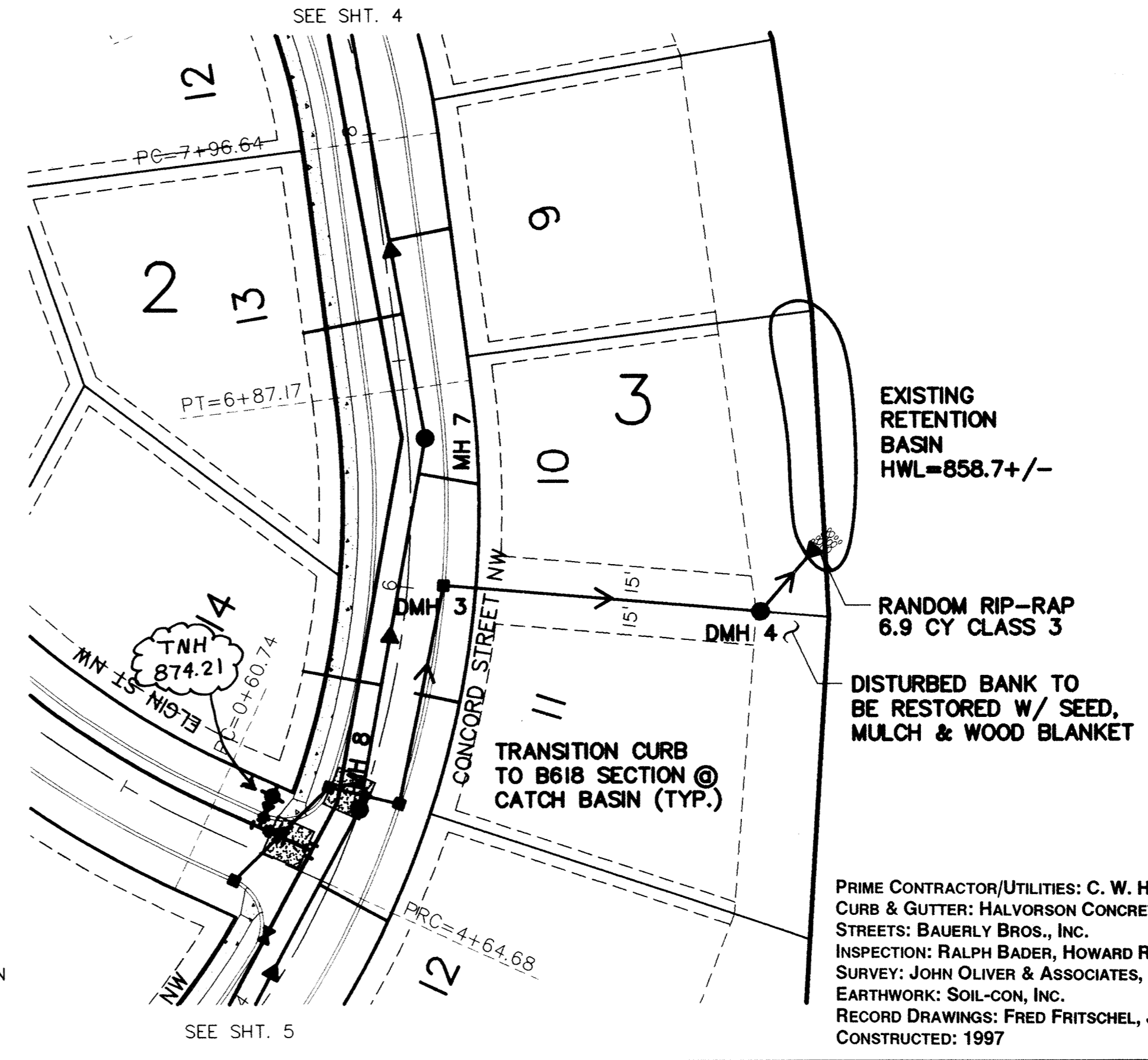
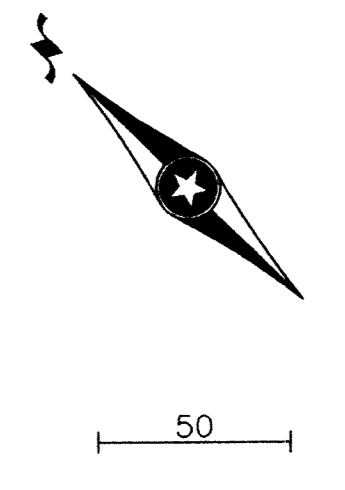


# BLOCK 1 RECORD DRAWINGS

# BLOCK 3



NOTE: CENTERLINE STREET ELEVATIONS WERE NOT SHOT AFTER CONSTRUCTION.



ORIG. DATE: 5/5/95  
 DESIGN BY: JR.PG.TM  
 DRAWN BY: PG  
 CHECKED BY: TM  
 REVISIONS: 12/23/97  
 RECORD DRAWING

I hereby certify that this plan was prepared by me or under my direct supervision and that I am a duly Registered Professional Engineer under the laws of the State of Minnesota.

Signed: *Fred Mitsch*  
 Date: 7/22/96 Reg. No. 20383

**John Oliver & Associates, Inc.**  
 Civil Engineering, Land Surveying, Land Planning  
 580 Dodge Avenue  
 Elk River, MN 55330  
 (612)441-2072 (FAX)441-5665  
 201 W. Travelers Trail, Suite 200  
 Burnsville, MN 55337  
 (612)894-3045 (FAX)894-3049

MISSISSIPPI OAKS SECOND ADDITION  
 STORM SEWER  
 SHEET 7 OF 12  
 FILE NO. 6521.20-03