

6 of 12

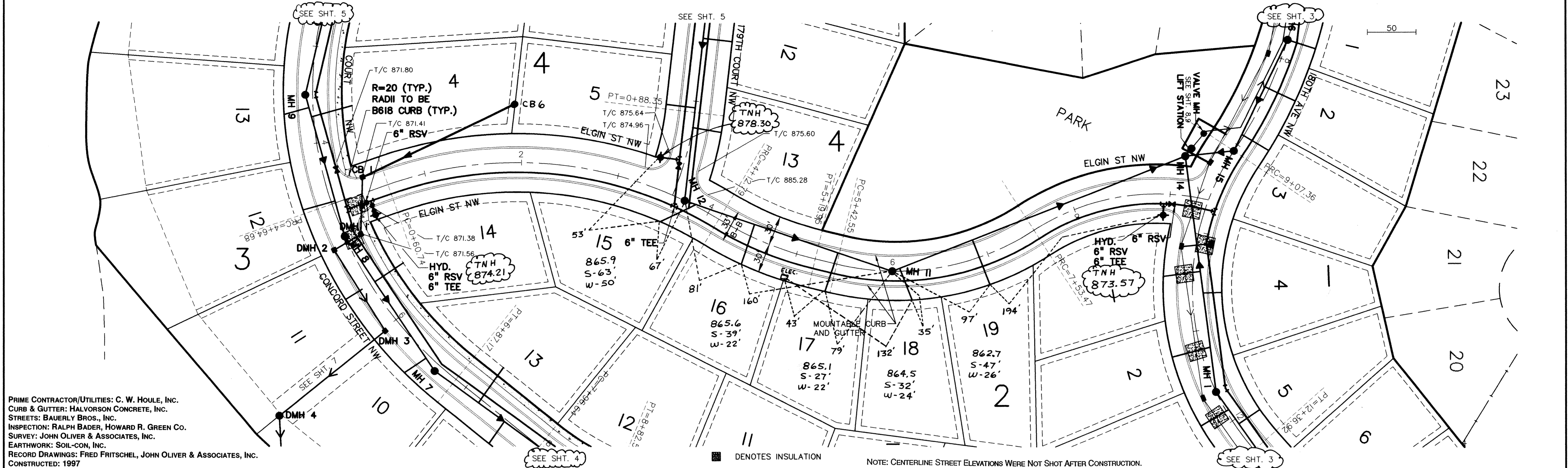
www.joan.com

ELGIN STREET NW

RECORD DRAWINGS



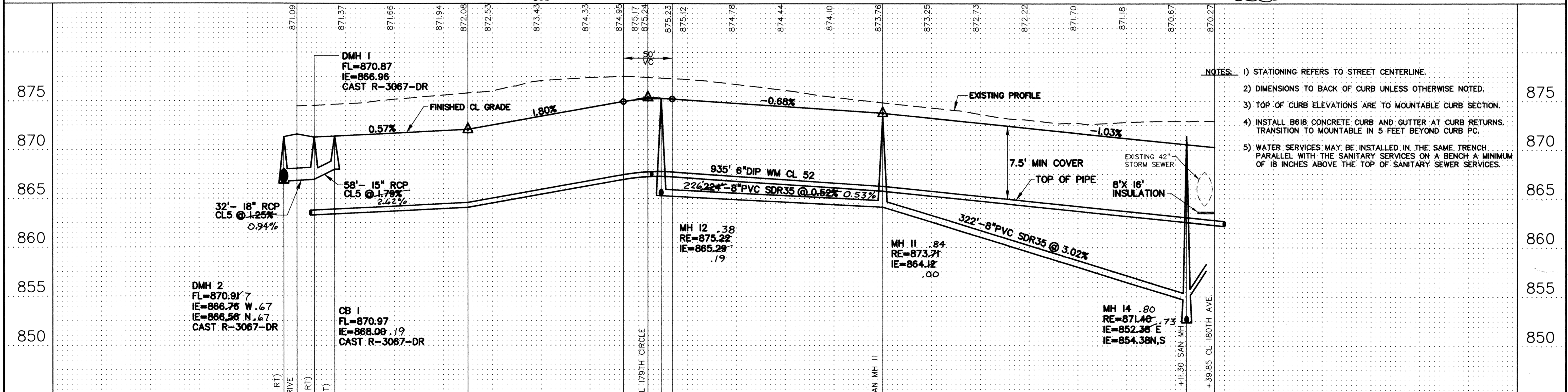
50



PRIME CONTRACTOR/UTILITIES: C. W. HOULE, INC.
 CURB & GUTTER: HALVORSON CONCRETE, INC.
 STREETS: BAUERLY BROS., INC.
 INSPECTION: RALPH BADER, HOWARD R. GREEN CO.
 SURVEY: JOHN OLIVER & ASSOCIATES, INC.
 EARTHWORK: SOIL-CON, INC.
 RECORD DRAWINGS: FRED FRITSCHEL, JOHN OLIVER & ASSOCIATES, INC.
 CONSTRUCTED: 1997

■ DENOTES INSULATION

NOTE: CENTERLINE STREET ELEVATIONS WERE NOT SHOT AFTER CONSTRUCTION.



- NOTES:
- 1) STATIONING REFERS TO STREET CENTERLINE.
 - 2) DIMENSIONS TO BACK OF CURB UNLESS OTHERWISE NOTED.
 - 3) TOP OF CURB ELEVATIONS ARE TO MOUNTABLE CURB SECTION.
 - 4) INSTALL B618 CONCRETE CURB AND GUTTER AT CURB RETURNS. TRANSITION TO MOUNTABLE IN 5 FEET BEYOND CURB PC.
 - 5) WATER SERVICES MAY BE INSTALLED IN THE SAME TRENCH PARALLEL WITH THE SANITARY SERVICES ON A BENCH A MINIMUM OF 18 INCHES ABOVE THE TOP OF SANITARY SEWER SERVICES.

<p>ORIG. DATE: 5/5/95 DESIGN BY: JR, PG, TM DRAWN BY: PG CHECKED BY: TM</p> <p>REVISIONS: 8/28/96 CITY COMMENTS RECORD DRAWING 12/22/97</p>	<p>I hereby certify that this plan was prepared by me or under my direct supervision and that I am a duly Registered Professional Engineer under the laws of the State of Minnesota.</p> <p>Signed: <i>John Oliver</i> Date: 7/22/96 Reg. No. 20383</p>	<p>John Oliver & Associates, Inc. <i>Civil Engineering, Land Surveying, Land Planning</i></p> <p>680 Dodge Avenue Elk River, MN 55330 (612)441-2072 (FAX)441-5865</p> <p>201 W. Travelers Trail, Suite 200 Burnsville, MN 55337 (612)894-3045 (FAX)894-3049</p>	<p>MISSISSIPPI OAKS SECOND ADDITION ELGIN STREET NW SAN SEWER, WATERMAIN STREET, STORM SEWER</p> <p>SHEET 6 OF 12</p>
<p>DRAWING FILE: MS2-UELG.DWG</p>		<p>TEXT FILE:</p>	
		<p>FILE NO. 6521.20-03</p>	

1142

DRAWING NUMBER
 MISS12.96
 SHEET 6 OF 12