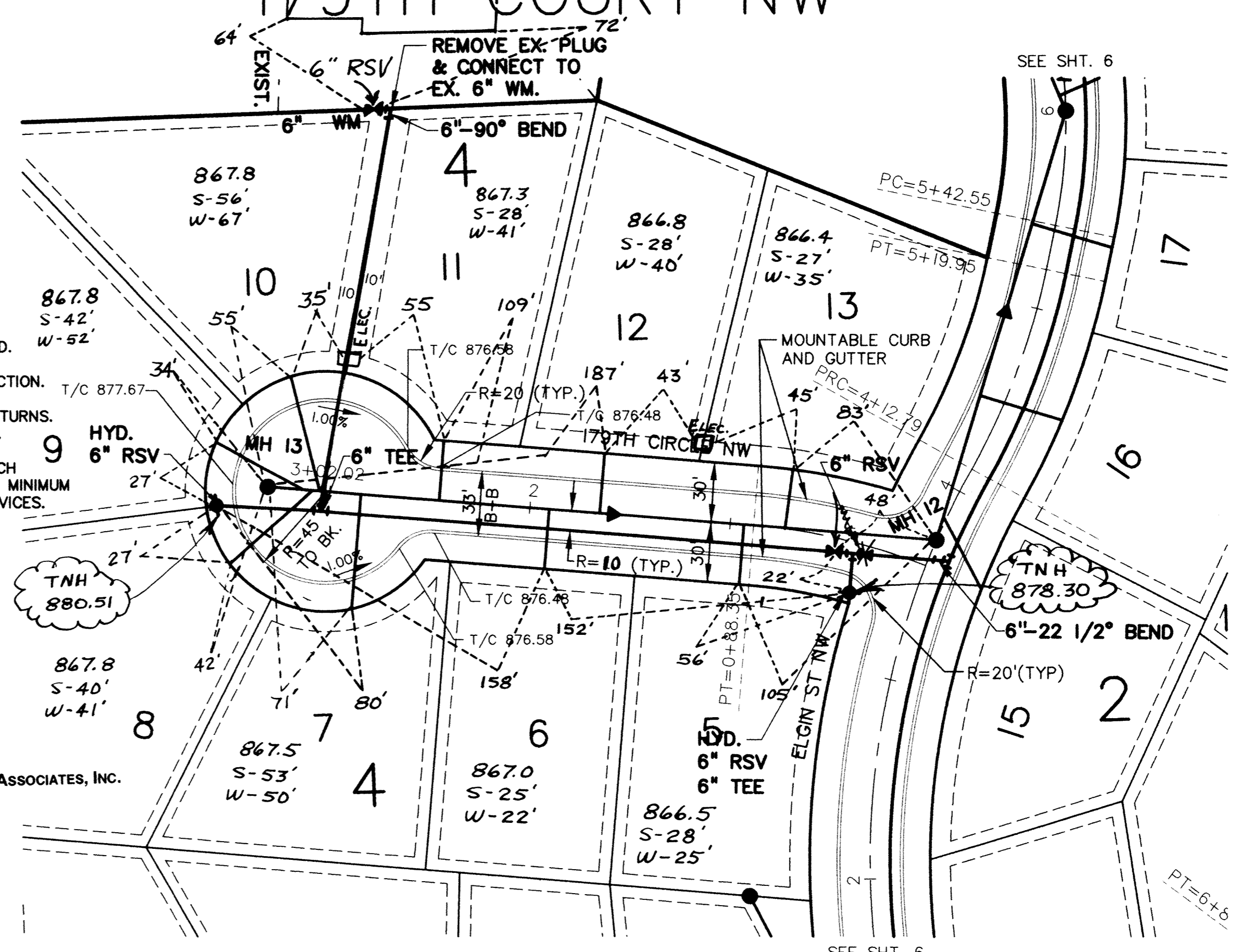
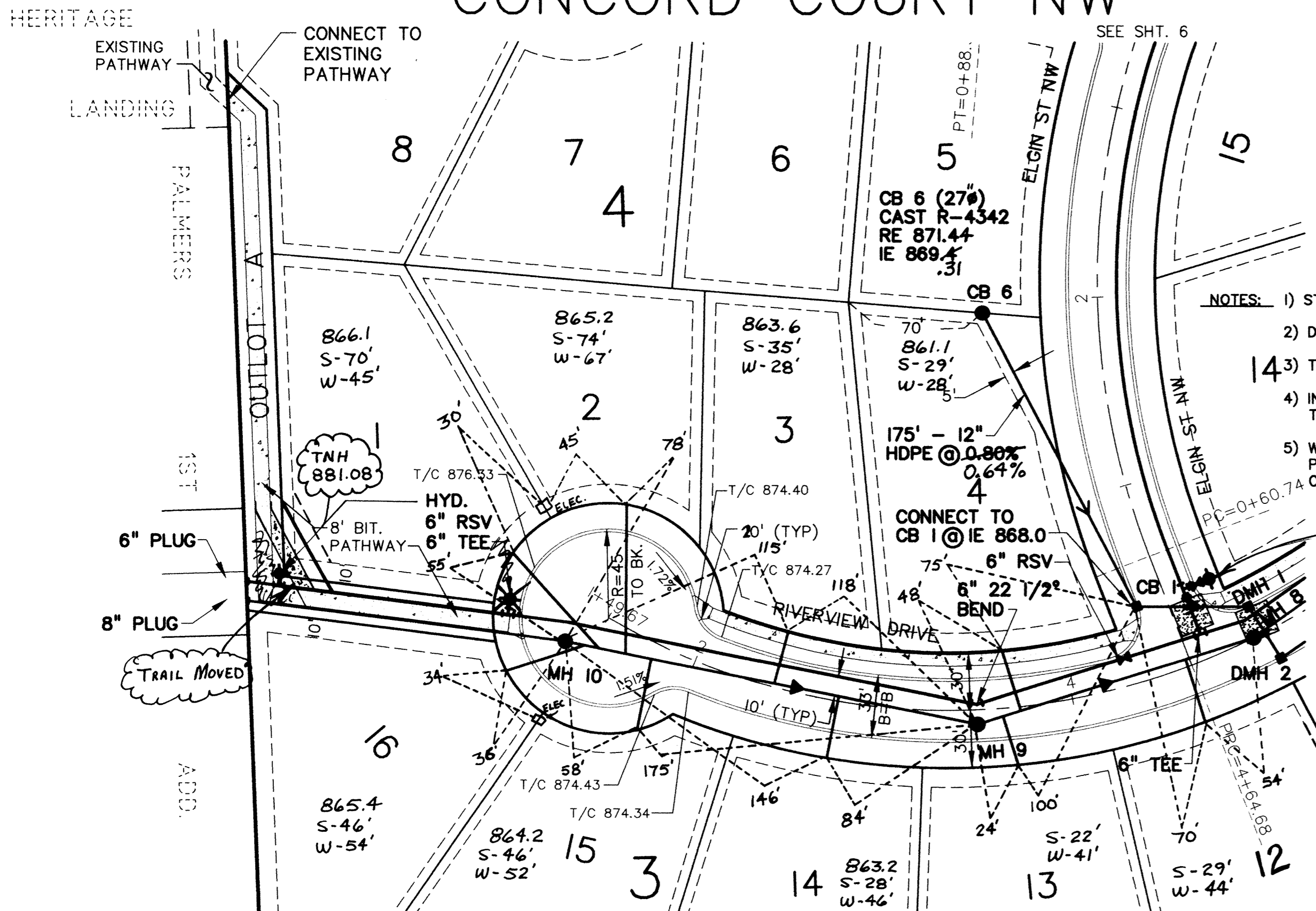


RECORD DRAWINGS

CONCORD COURT NW

179TH COURT NW

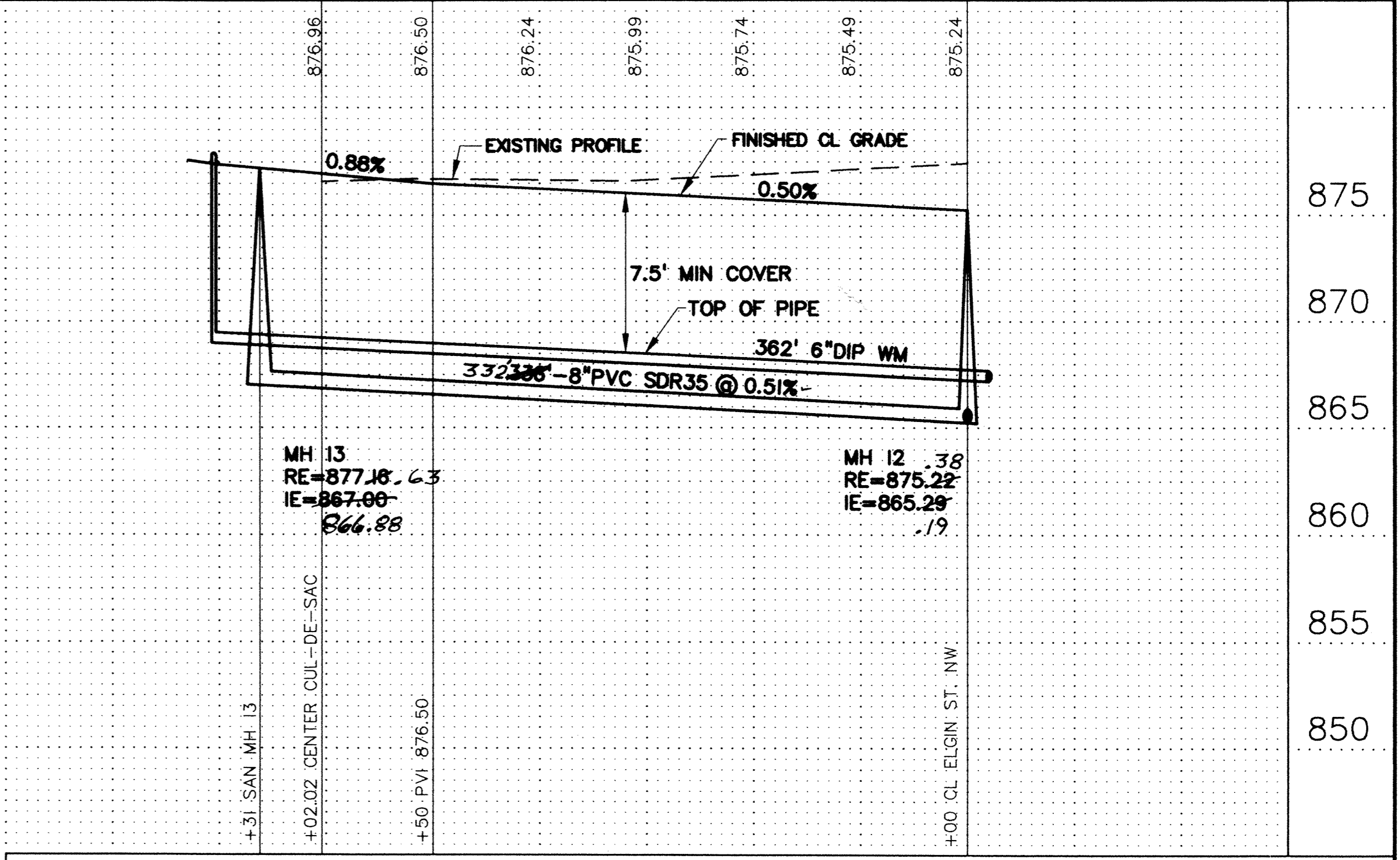
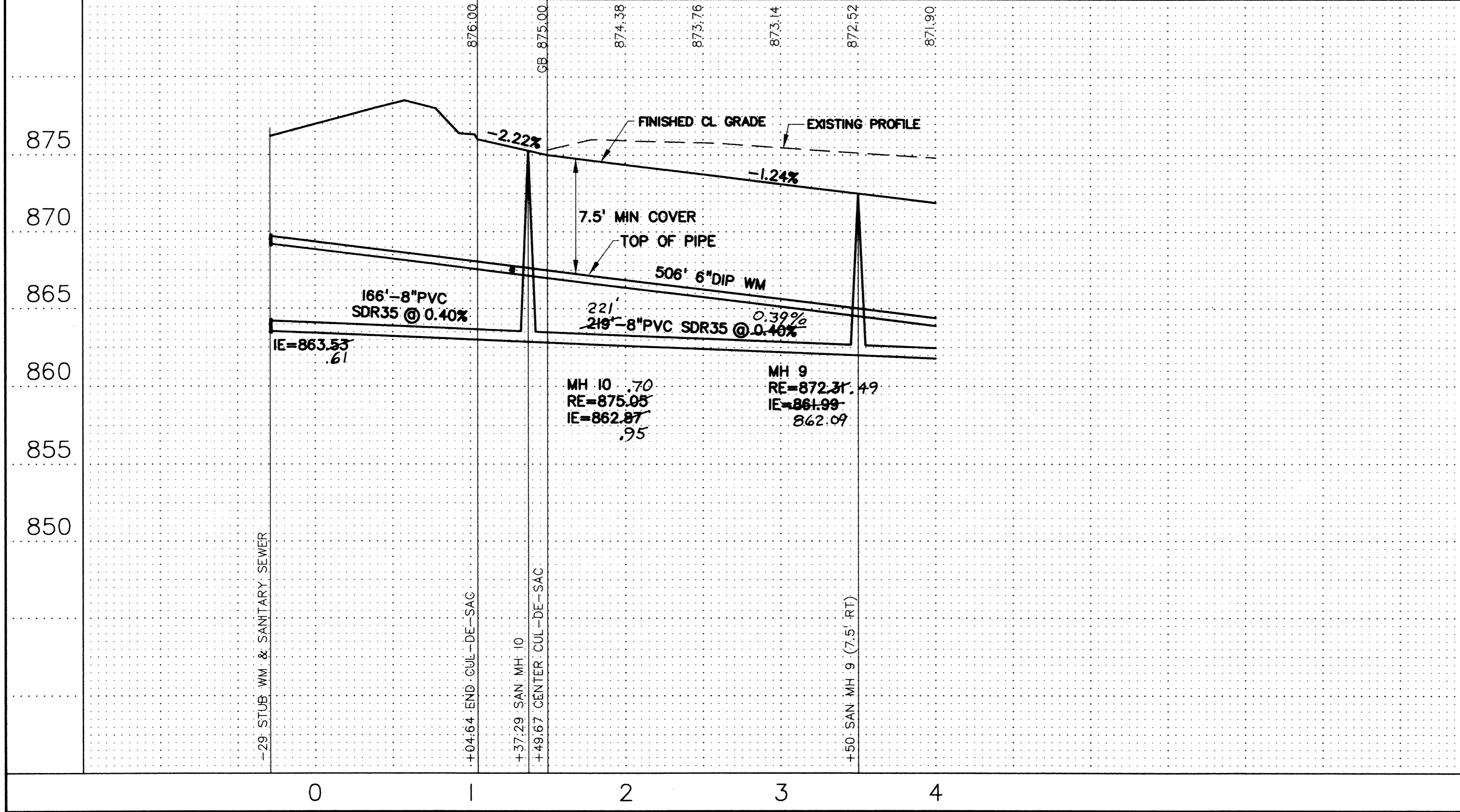


- NOTES:
- 1) STATIONING REFERS TO STREET CENTERLINE.
 - 2) DIMENSIONS TO BACK OF CURB UNLESS OTHERWISE NOTED.
 - 3) TOP OF CURB ELEVATIONS ARE TO MOUNTABLE CURB SECTION.
 - 4) INSTALL B618 CONCRETE CURB AND GUTTER AT CURB RETURNS. TRANSITION TO MOUNTABLE IN 5 FEET BEYOND CURB PC.
 - 5) WATER SERVICES MAY BE INSTALLED IN THE SAME TRENCH PARALLEL WITH THE SANITARY SERVICES ON A BENCH A MINIMUM OF 18 INCHES ABOVE THE TOP OF SANITARY SEWER SERVICES.

PRIME CONTRACTOR/UTILITIES: C. W. HOULE, INC.
 CURB & GUTTER: HALVORSON CONCRETE, INC.
 STREETS: BAUERLY BROS., INC.
 INSPECTION: RALPH BADER, HOWARD R. GREEN CO.
 SURVEY: JOHN OLIVER & ASSOCIATES, INC.
 EARTHWORK: SOIL-COM, INC.
 RECORD DRAWINGS: FRED FRITSCHEL, JOHN OLIVER & ASSOCIATES, INC.
 CONSTRUCTED: 1997

■ DENOTES INSULATION

NOTE: CENTERLINE STREET ELEVATIONS WERE NOT SHOT AFTER CONSTRUCTION.



ORIG. DATE: 5/5/95
 DESIGN BY: JR, PG, TM
 DRAWN BY: PC
 CHECKED BY: TM

REVISIONS: 12/10/97
 ADD CB 4
 RECORD DRAWINGS
 12/19/97

I hereby certify that this plan was prepared by me or under my direct supervision and that I am a duly Registered Professional Engineer under the laws of the State of Minnesota.

Signed: *John Oliver*
 Date: 7/22/96 Reg. No. 20383

John Oliver & Associates, Inc.
 Civil Engineering, Land Surveying, Land Planning
 580 Dodge Avenue
 Elk River, MN 55330
 (612)441-2072 (FAX)441-5885

201 W. Travelers Trail, Suite 200
 Burnsville, MN 55337
 (612)894-3045 (FAX)894-3049

MISSISSIPPI OAKS SECOND ADDITION
 RIVERVIEW DRIVE, 179TH CIRCLE NW
 SAN SEWER, WATERMAIN STREET, STORM SEWER

DRAWING FILE: MS2-URIV.DWG
 TEXT FILE:

SHEET 5 OF 12
 FILE NO. 6521.20-03

DRAWING NUMBER MISS12.96