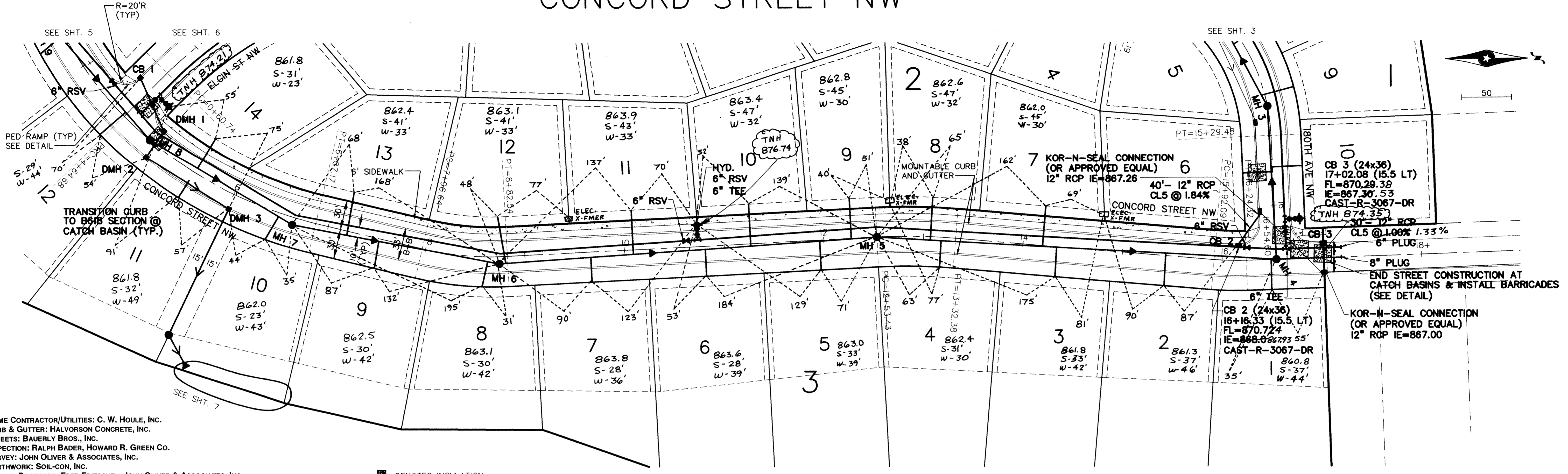


4 of 12

MISSISSIPPI OAKS

CONCORD STREET NW

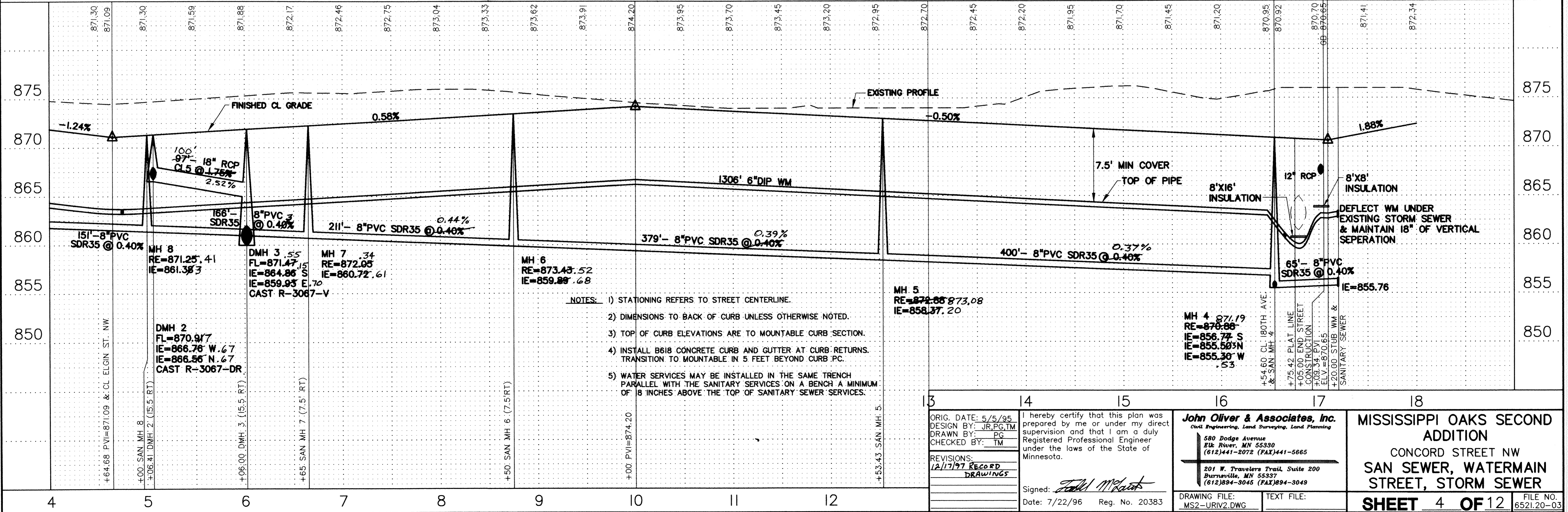
RECORD DRAWINGS



PRIME CONTRACTOR/UTILITIES: C. W. HOULE, INC.
 CURB & GUTTER: HALVORSON CONCRETE, INC.
 STREETS: BAUERLY BROS., INC.
 INSPECTION: RALPH BADER, HOWARD R. GREEN CO.
 SURVEY: JOHN OLIVER & ASSOCIATES, INC.
 EARTHWORK: SOIL-CON, INC.
 RECORD DRAWINGS: FRED FRITSCHEL, JOHN OLIVER & ASSOCIATES, INC.
 CONSTRUCTED: 1997

■ DENOTES INSULATION

NOTE: CENTERLINE STREET ELEVATIONS WERE NOT SHOT AFTER CONSTRUCTION.



- NOTES:
- 1) STATIONING REFERS TO STREET CENTERLINE.
 - 2) DIMENSIONS TO BACK OF CURB UNLESS OTHERWISE NOTED.
 - 3) TOP OF CURB ELEVATIONS ARE TO MOUNTABLE CURB SECTION.
 - 4) INSTALL B618 CONCRETE CURB AND GUTTER AT CURB RETURNS. TRANSITION TO MOUNTABLE IN 5 FEET BEYOND CURB P.C.
 - 5) WATER SERVICES MAY BE INSTALLED IN THE SAME TRENCH PARALLEL WITH THE SANITARY SERVICES ON A BENCH A MINIMUM OF 18 INCHES ABOVE THE TOP OF SANITARY SEWER SERVICES.

ORIG. DATE: 5/5/95 DESIGN BY: JR.PG.TM DRAWN BY: PG CHECKED BY: TM REVISIONS: 12/17/97 RECORD DRAWINGS	hereby certify that this plan was prepared by me or under my direct supervision and that I am a duly Registered Professional Engineer under the laws of the State of Minnesota. Signed: <i>Fred Fritschel</i> Date: 7/22/96 Reg. No. 20383	John Oliver & Associates, Inc. Civil Engineering, Land Surveying, Land Planning 580 Dodge Avenue Elk River, MN 55330 (612)441-2072 (FAX)441-5666 201 W. Travelers Trail, Suite 200 Burnsville, MN 55337 (612)894-3045 (FAX)894-3049	MISSISSIPPI OAKS SECOND ADDITION CONCORD STREET NW SAN SEWER, WATERMAIN STREET, STORM SEWER SHEET 4 OF 12 FILE NO. 8521.20-03
---	--	---	---

DRAWING NUMBER MISS12.96

DRAWING NUMBER MISS12.96

DRAWING NUMBER MISS12.96

DRAWING NUMBER MISS12.96