

3 of 12
ST. Storm Sewer

180TH AVENUE NW RECORD DRAWINGS

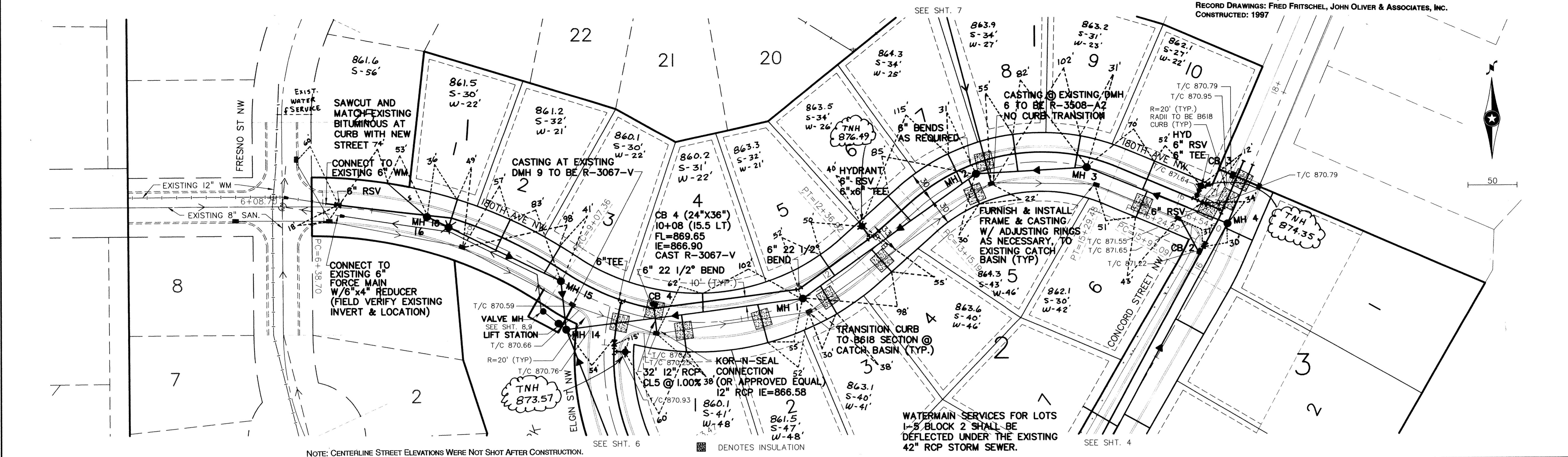
PRIME CONTRACTOR/UTILITIES: C. W. HOULE, INC.
 CURB & GUTTER: HALVORSON CONCRETE, INC.
 STREETS: BAUERLY BROS., INC.
 INSPECTION: RALPH BADER, HOWARD R. GREEN CO.
 SURVEY: JOHN OLIVER & ASSOCIATES, INC.
 EARTHWORK: SOIL-CON, INC.
 RECORD DRAWINGS: FRED FRITSCHEL, JOHN OLIVER & ASSOCIATES, INC.
 CONSTRUCTED: 1997

DRAWING NUMBER

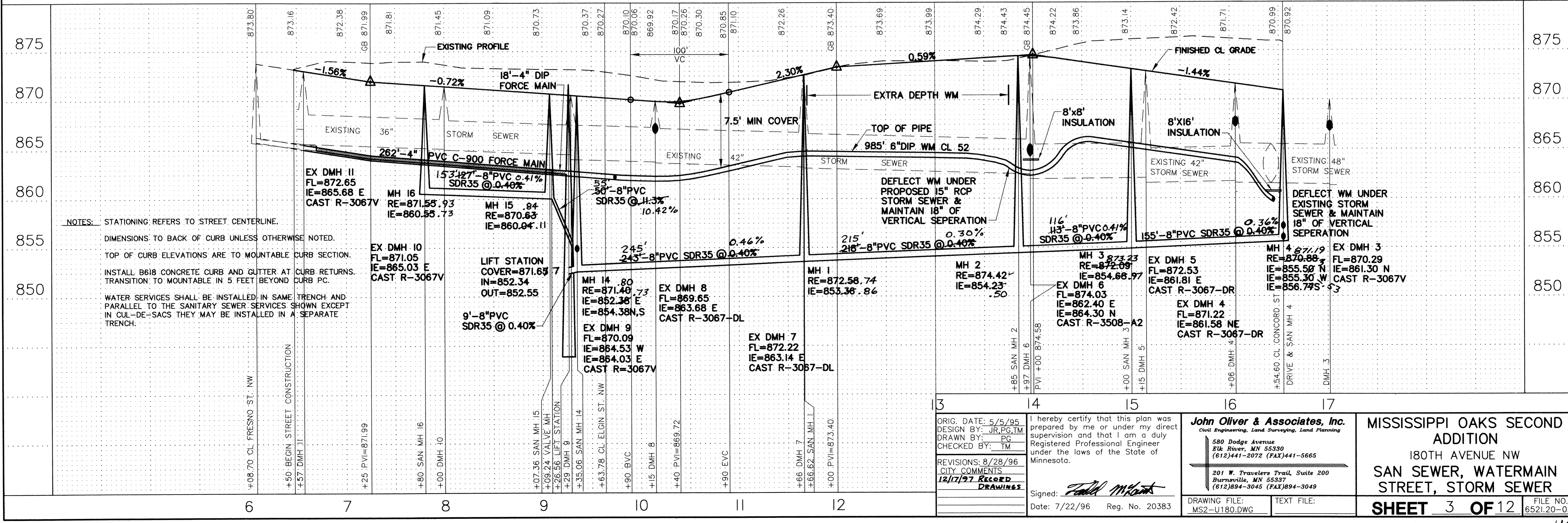
DRAWING NUMBER

DRAWING NUMBER

DRAWING NUMBER



NOTE: CENTERLINE STREET ELEVATIONS WERE NOT SHOT AFTER CONSTRUCTION.



NOTES: STATIONING: REFERS TO STREET CENTERLINE.
 DIMENSIONS: TO BACK OF CURB UNLESS OTHERWISE NOTED.
 TOP OF CURB ELEVATIONS ARE TO MOUNTABLE CURB SECTION.
 INSTALL B618 CONCRETE CURB AND GUTTER AT CURB RETURNS. TRANSITION TO MOUNTABLE IN 5 FEET BEYOND CURB PC.
 WATER SERVICES SHALL BE INSTALLED IN SAME TRENCH AND PARALLEL TO THE SANITARY SEWER SERVICES SHOWN EXCEPT IN CUL-DE-SACS THEY MAY BE INSTALLED IN A SEPARATE TRENCH.

ORIG. DATE: 5/5/95
 DESIGN BY: JR, PG, TM
 DRAWN BY: PG
 CHECKED BY: TM
 REVISIONS: 8/28/96
 CITY COMMENTS:
 12/17/97 RECORD DRAWINGS

I hereby certify that this plan was prepared by me or under my direct supervision and that I am a duly Registered Professional Engineer under the laws of the State of Minnesota.
 John Oliver & Associates, Inc.
 Civil Engineering, Land Surveying, Land Planning
 580 Dodge Avenue
 Elk River, MN 55337
 (612)441-2072 (FAX)441-5665
 201 W. Travelers Trail, Suite 200
 Burnsville, MN 55337
 (612)894-3045 (FAX)894-3049

MISSISSIPPI OAKS SECOND ADDITION
 180TH AVENUE NW
 SAN SEWER, WATERMAIN STREET, STORM SEWER
SHEET 3 OF 12
 FILE NO. 6521.20-03