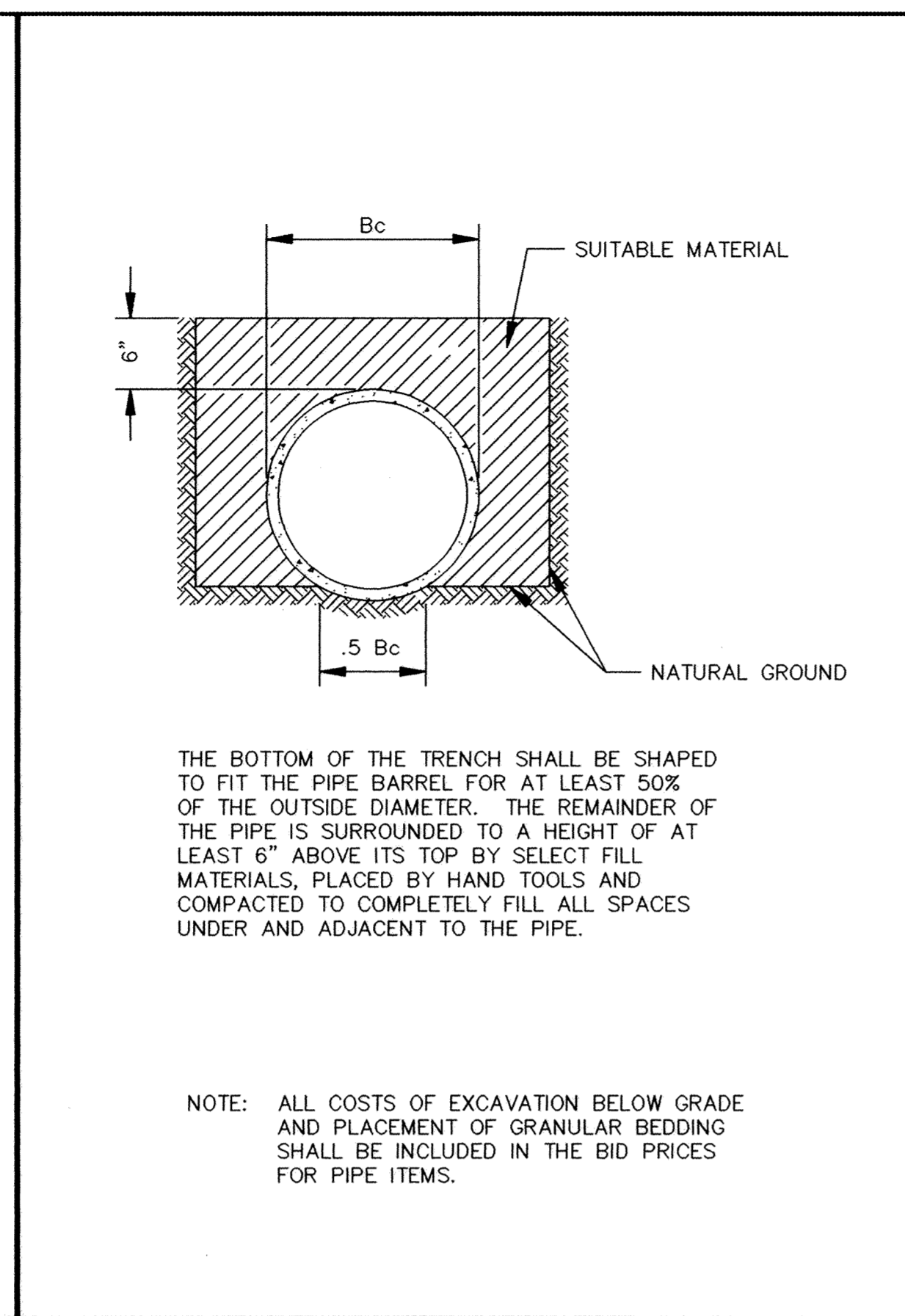
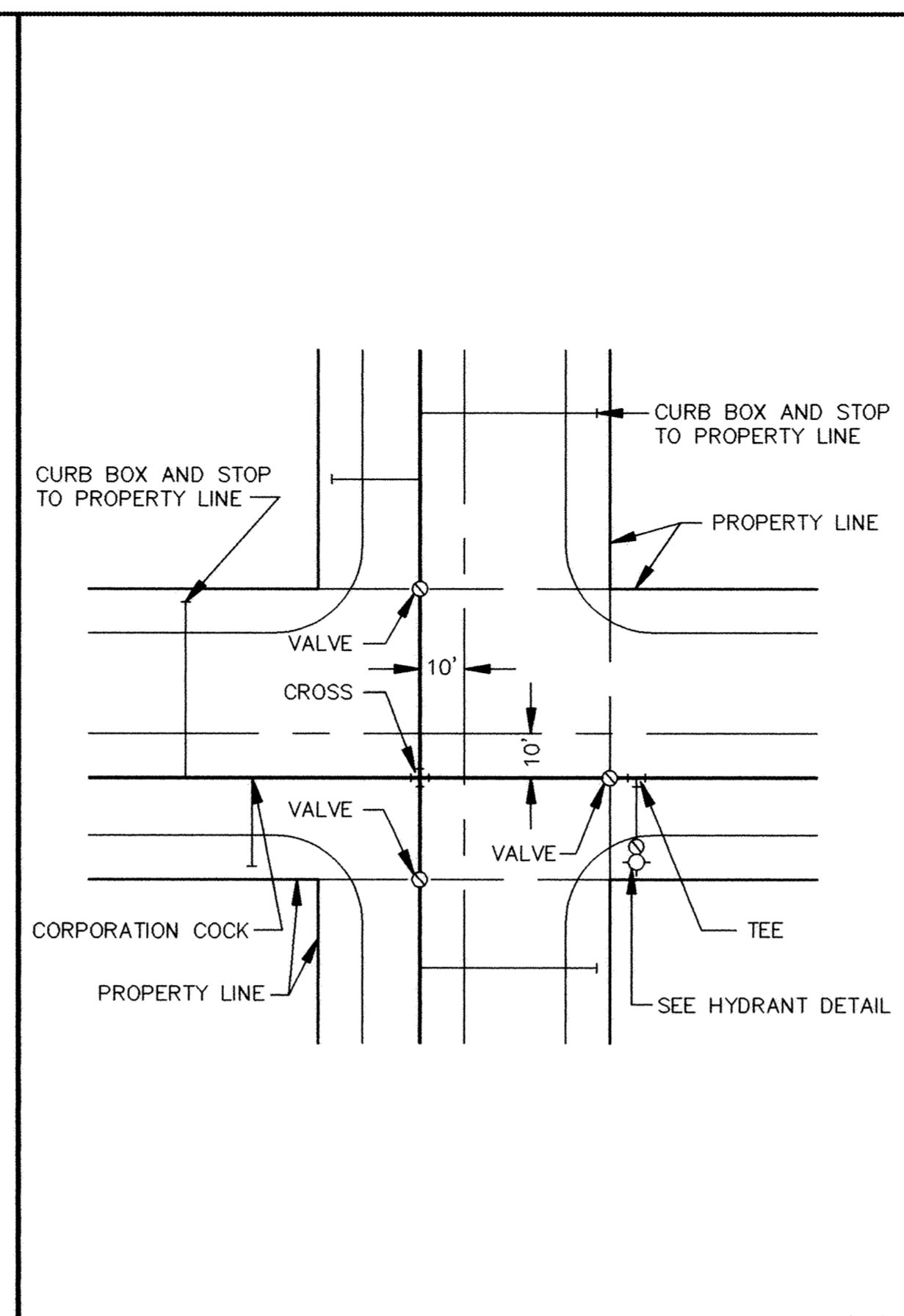


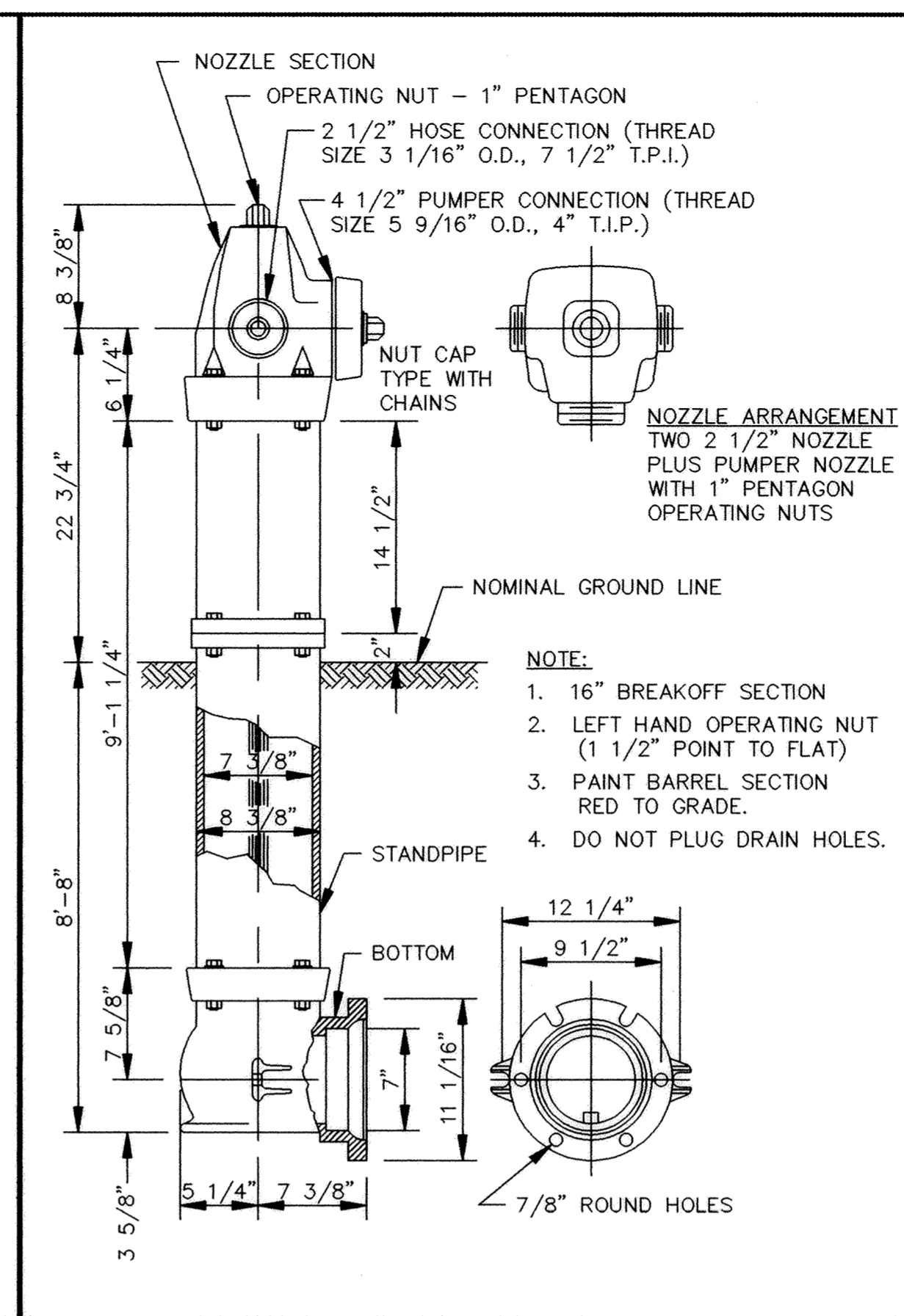
CLASS B PIPE BEDDING



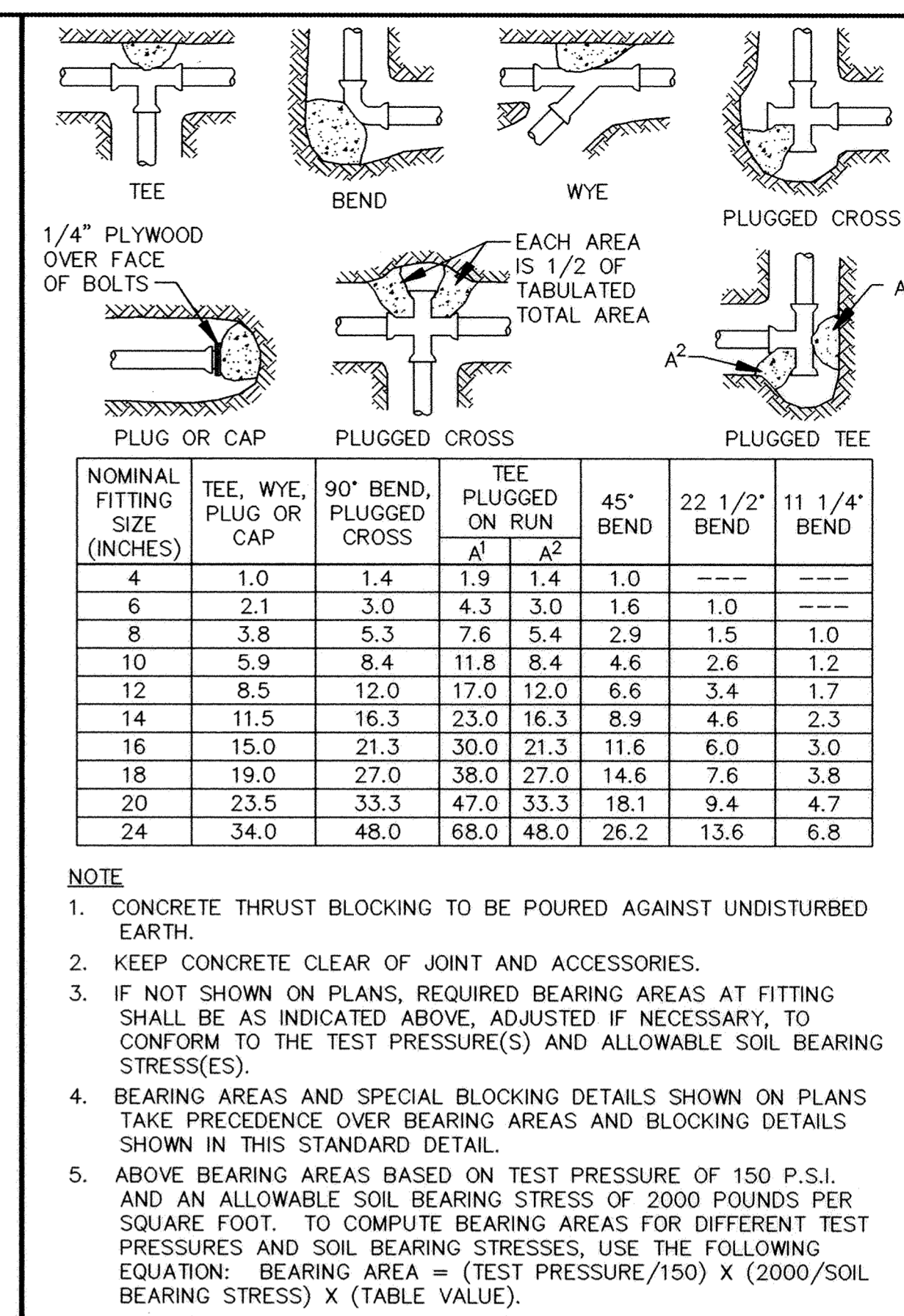
CLASS C PIPE BEDDING



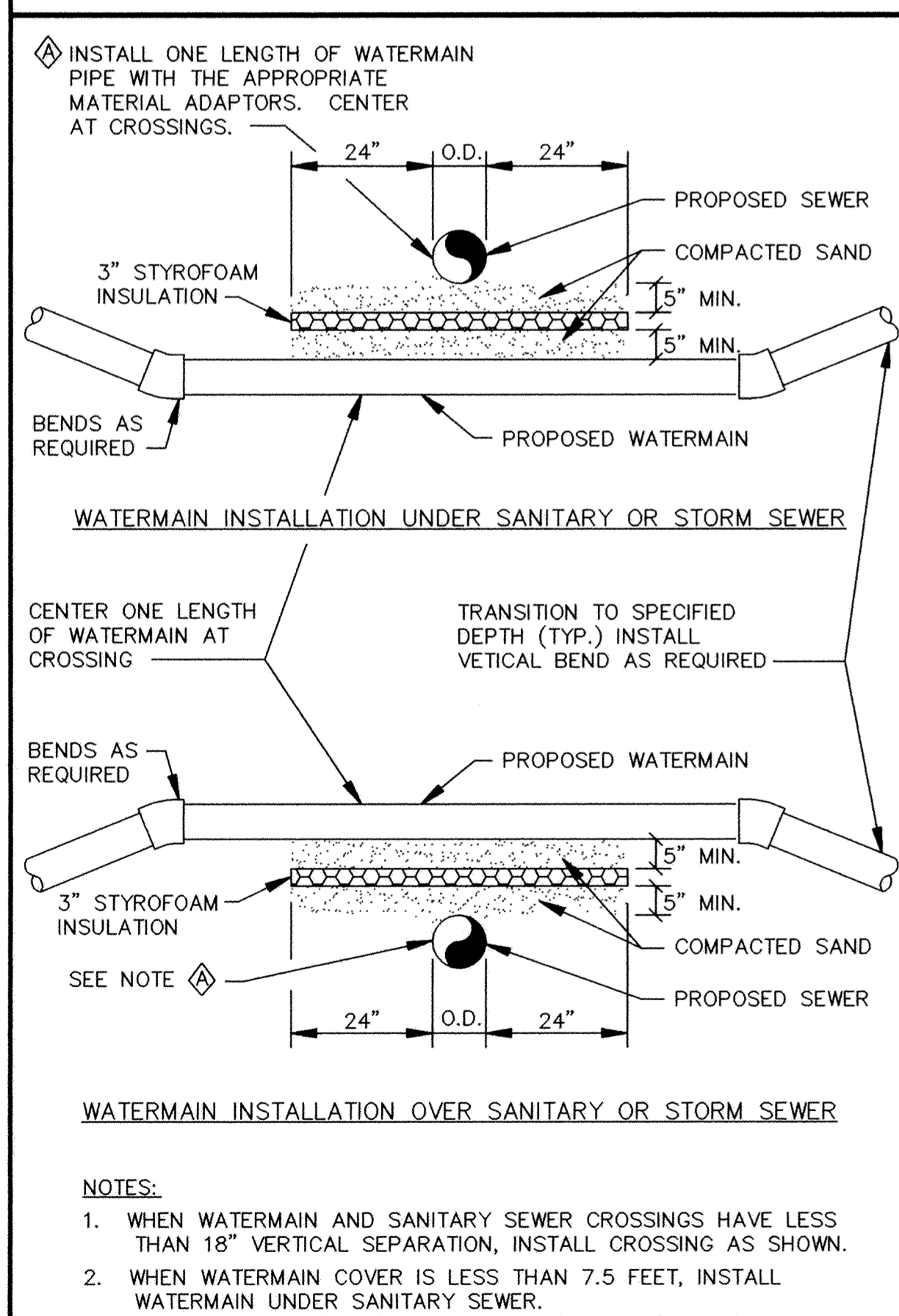
TYPICAL WATER LAYOUT



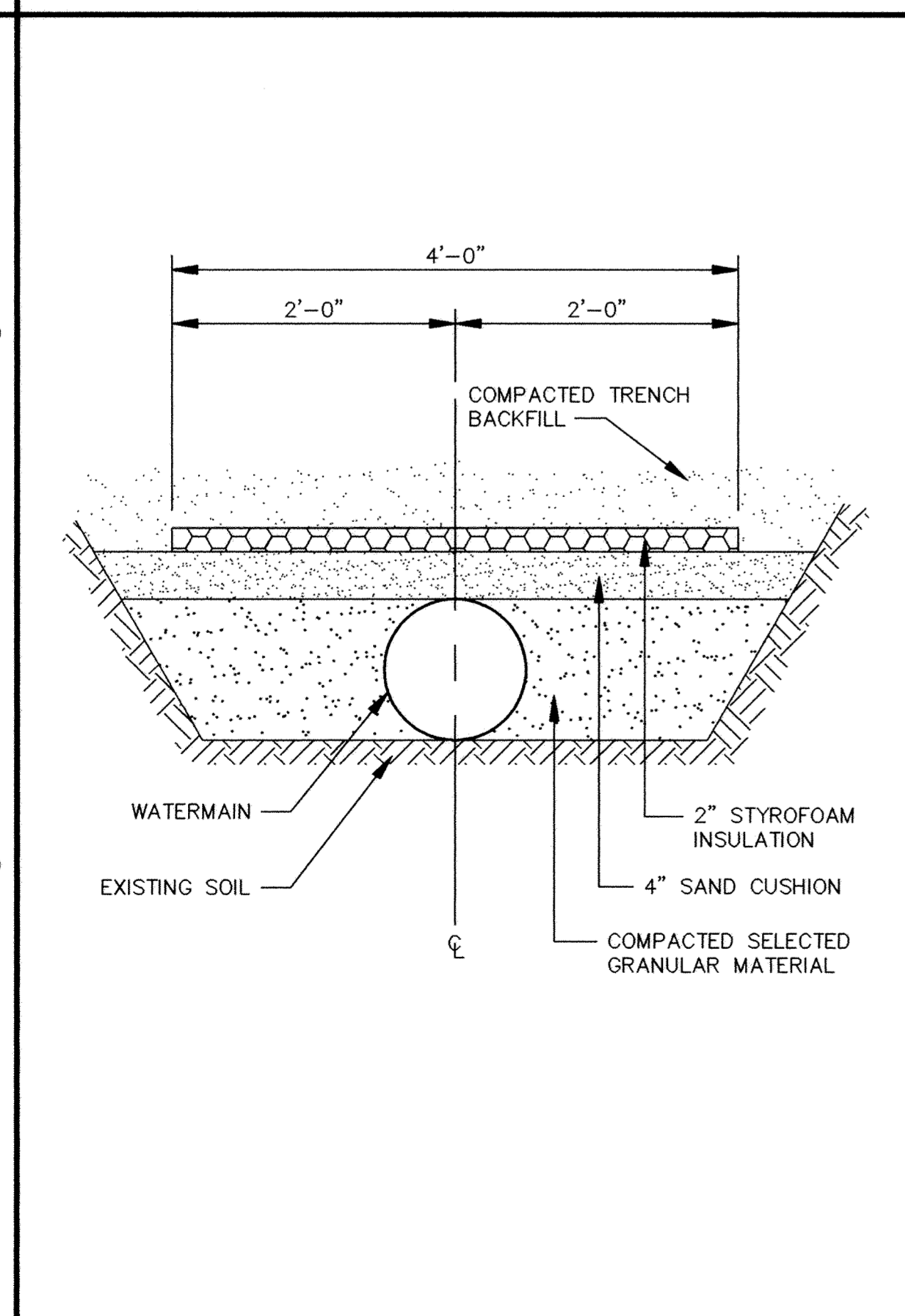
PACER HYDRANT DETAIL



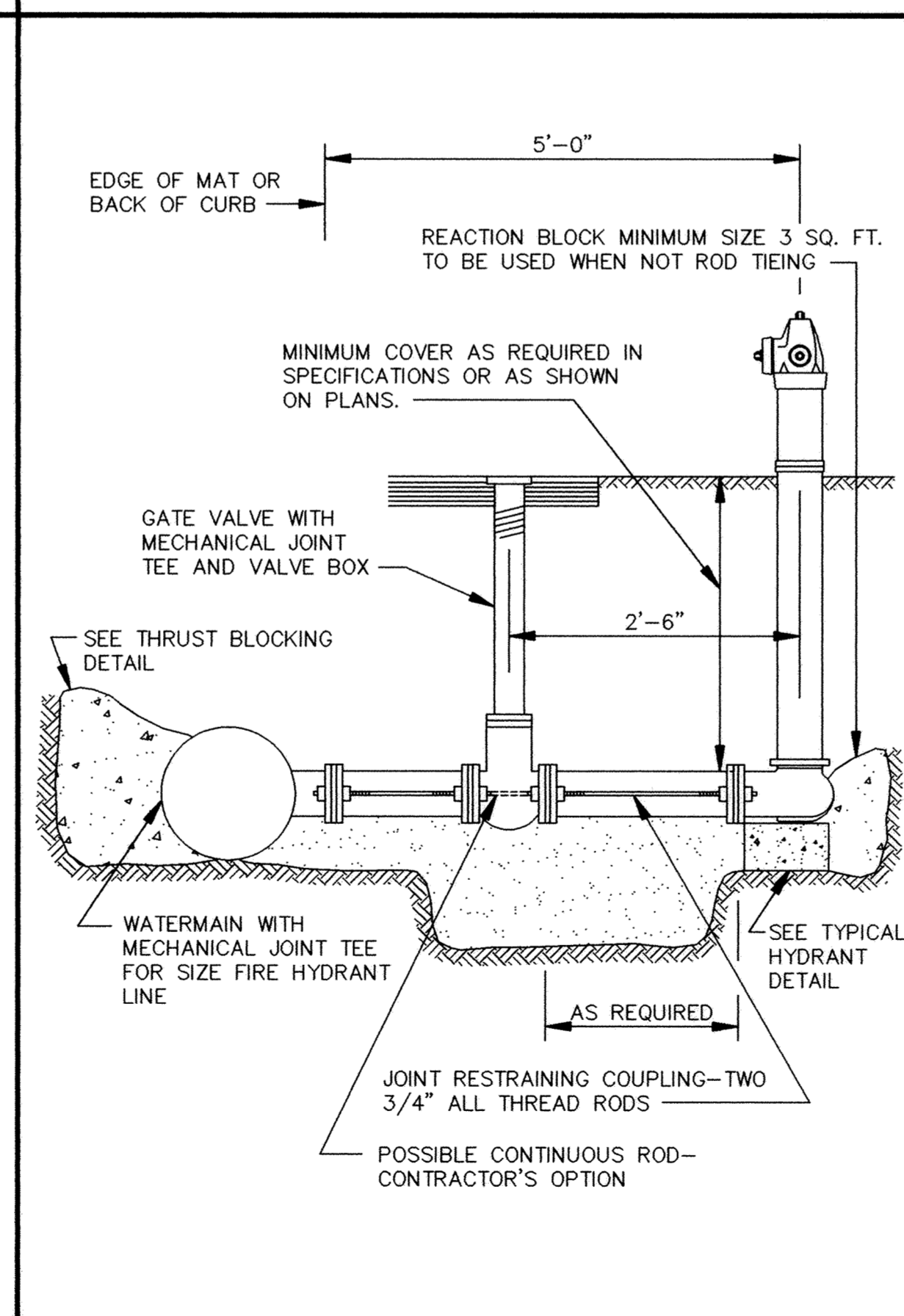
THRUST BLOCKING DETAIL



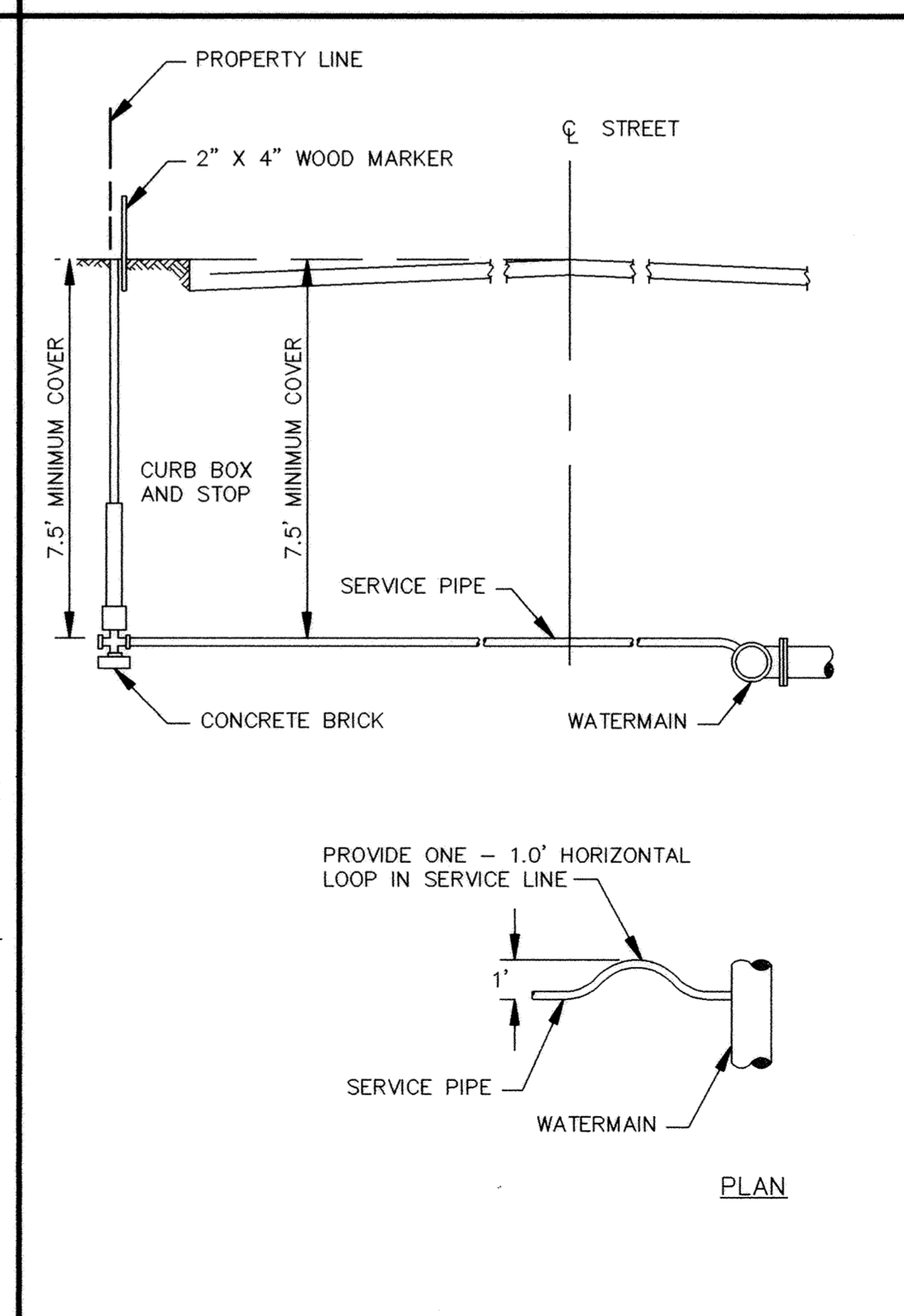
WATERMAIN CROSSING



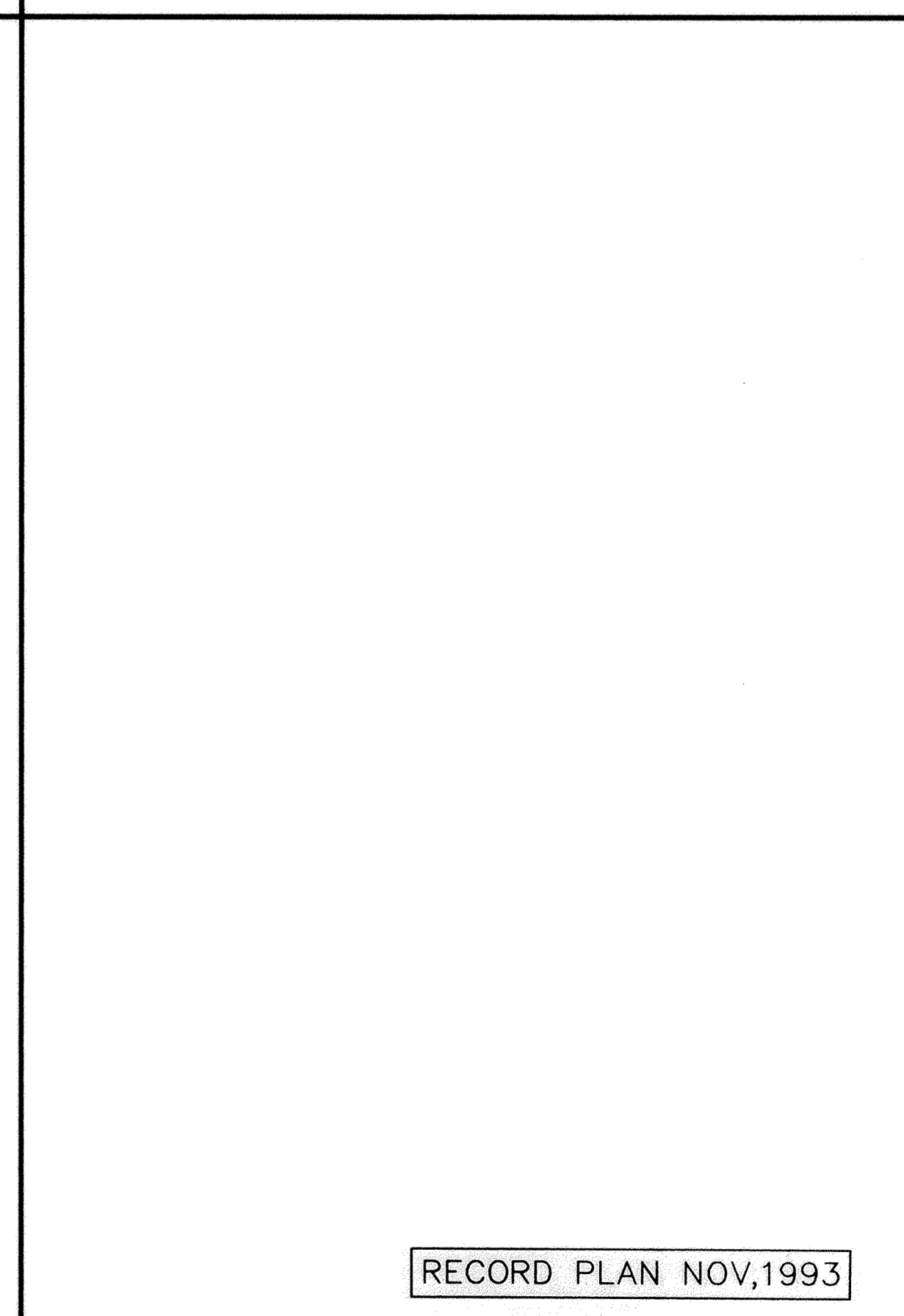
PIPE INSULATION DETAIL



RODDING DETAIL



TYPICAL SERVICE DETAIL



I HEREBY CERTIFY THAT THIS PLAN, SPECIFICATION, OR REPORT WAS PREPARED BY ME OR UNDER MY DIRECT SUPERVISION AND THAT I AM A DULY REGISTERED PROFESSIONAL ENGINEER UNDER THE LAWS OF THE STATE OF MINNESOTA.
 DATE 6/27/93 REG. NO. 19130

MS&A CONSULTING ENGINEERS
 Maier Stewart & Associates Inc.
 1959 SLOAN PLACE (612) 774-6021 ST. PAUL, MINNESOTA 55117
 9800 SHELARD PARKWAY (612) 546-0432 MINNEAPOLIS, MINNESOTA 55441

DATE	DESCRIPTION	DESIGNED	SUM

GRAPHIC SCALE
 0 HORIZ.
 0 VERT.

CITY OF ELK RIVER
 MISSISSIPPI OAKS, PHASE I
 WATERMAIN DETAILS

DATE JUNE 1993 SHEET 14 OF 16 SHEETS PROJECT NO. 230-164

DRAWING NUMBER MISS11.93

SAFCO PRODUCTS • NEW HOPE, MINNESOTA

REORDER BY PART NUMBER 6502