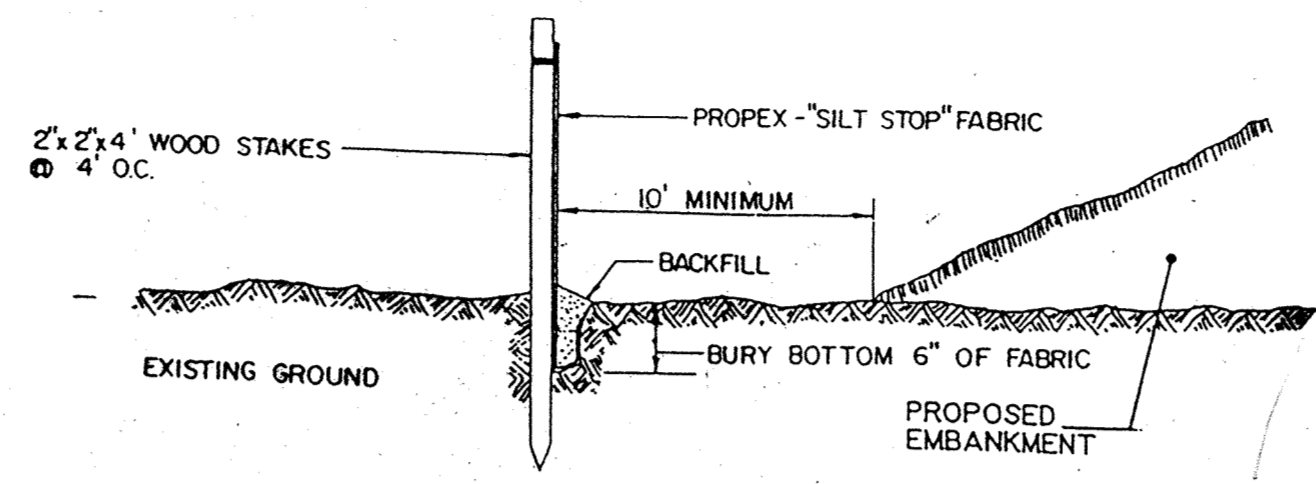
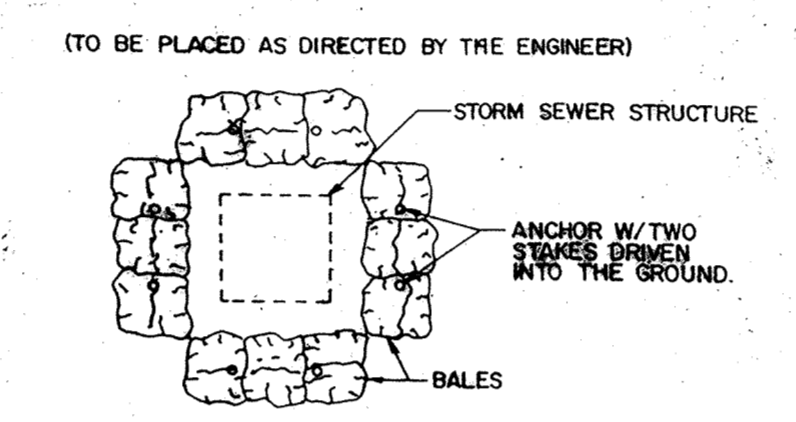


- SEE FINAL UTILITY AND STREET PLANS FOR STORM SEWER AND STREET DESIGN
- CONTRACTOR SHALL SEED AND MULCH ALL DISTURBED AREAS WITHIN 5 DAYS UPON THE COMPLETION OF GRADING OPERATIONS
- CONTRACTORS SHALL FIELD VERIFY LOCATION OF DISPOSAL AREA OF EXCESS MATERIAL WITH OWNER.

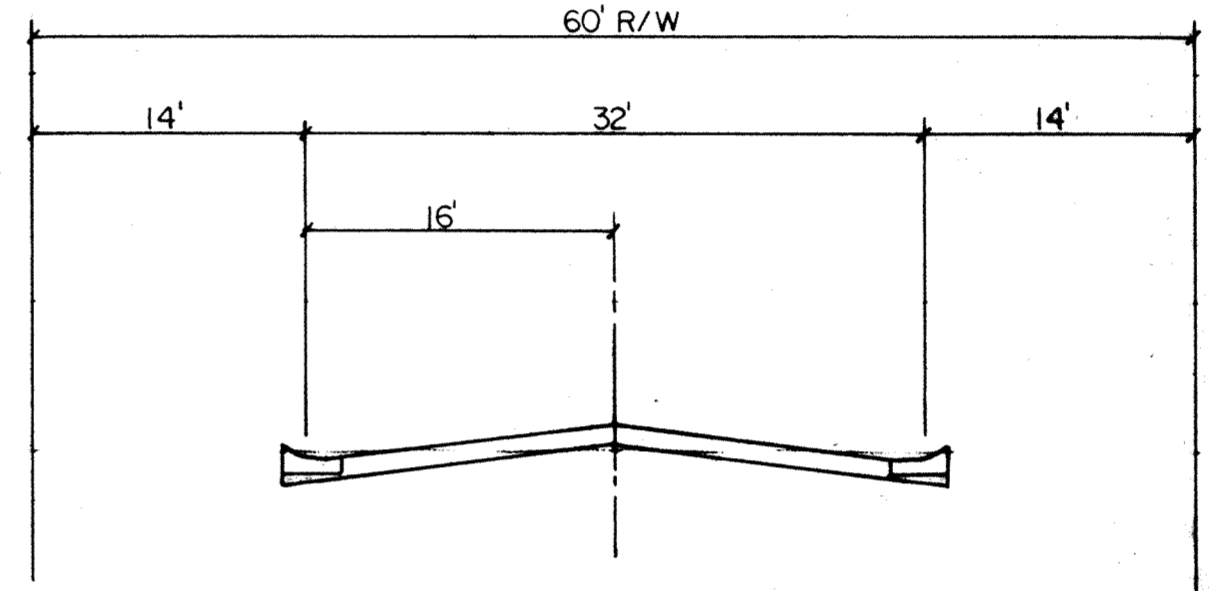


SILT FENCE

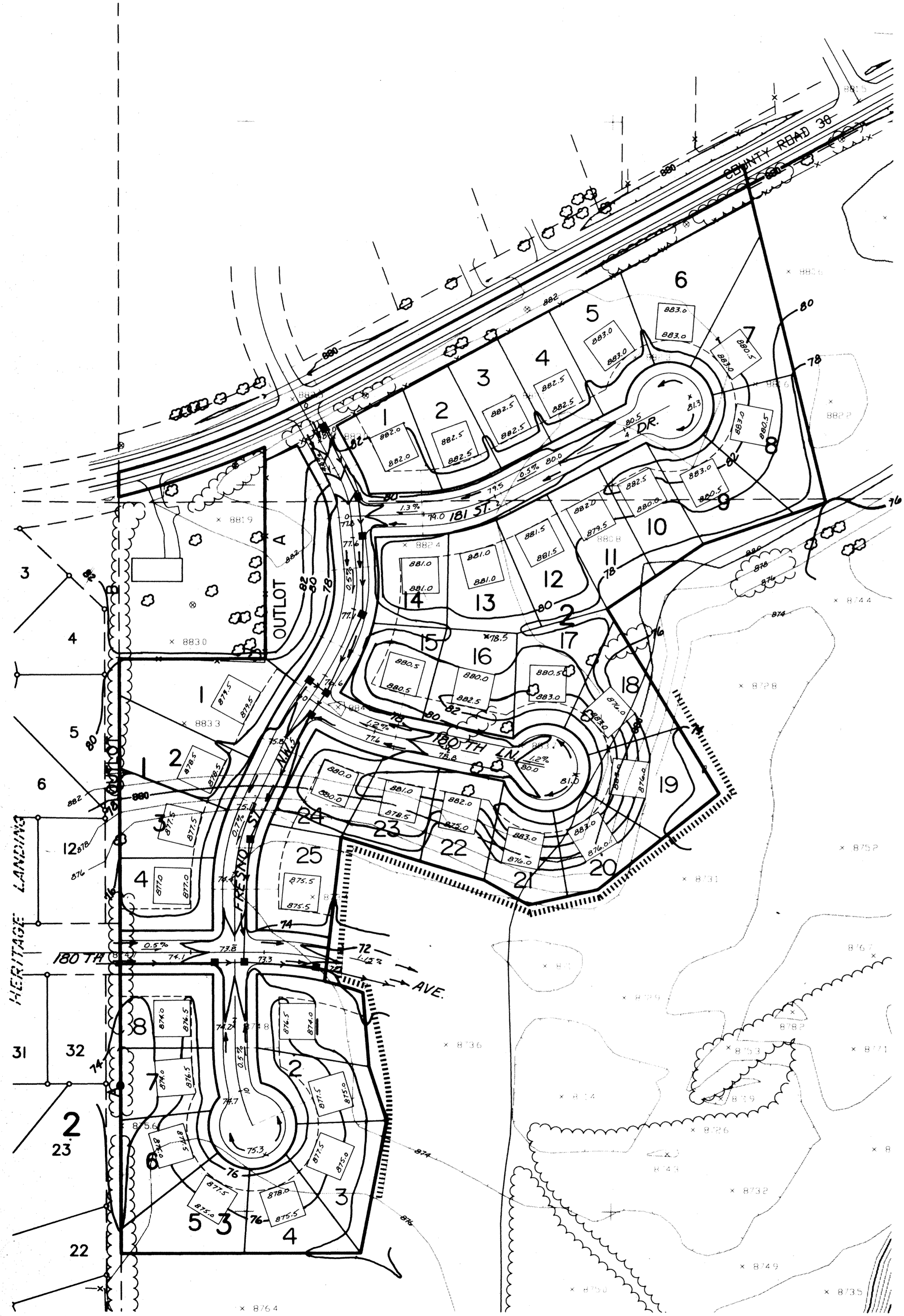


TEMPORARY BARRIER OF SEDIMENT CONTROL BALES TO PREVENT SEDIMENT-LADEN WATER FROM ENTERING INCOMPLETE STORM SEWER SYSTEM.

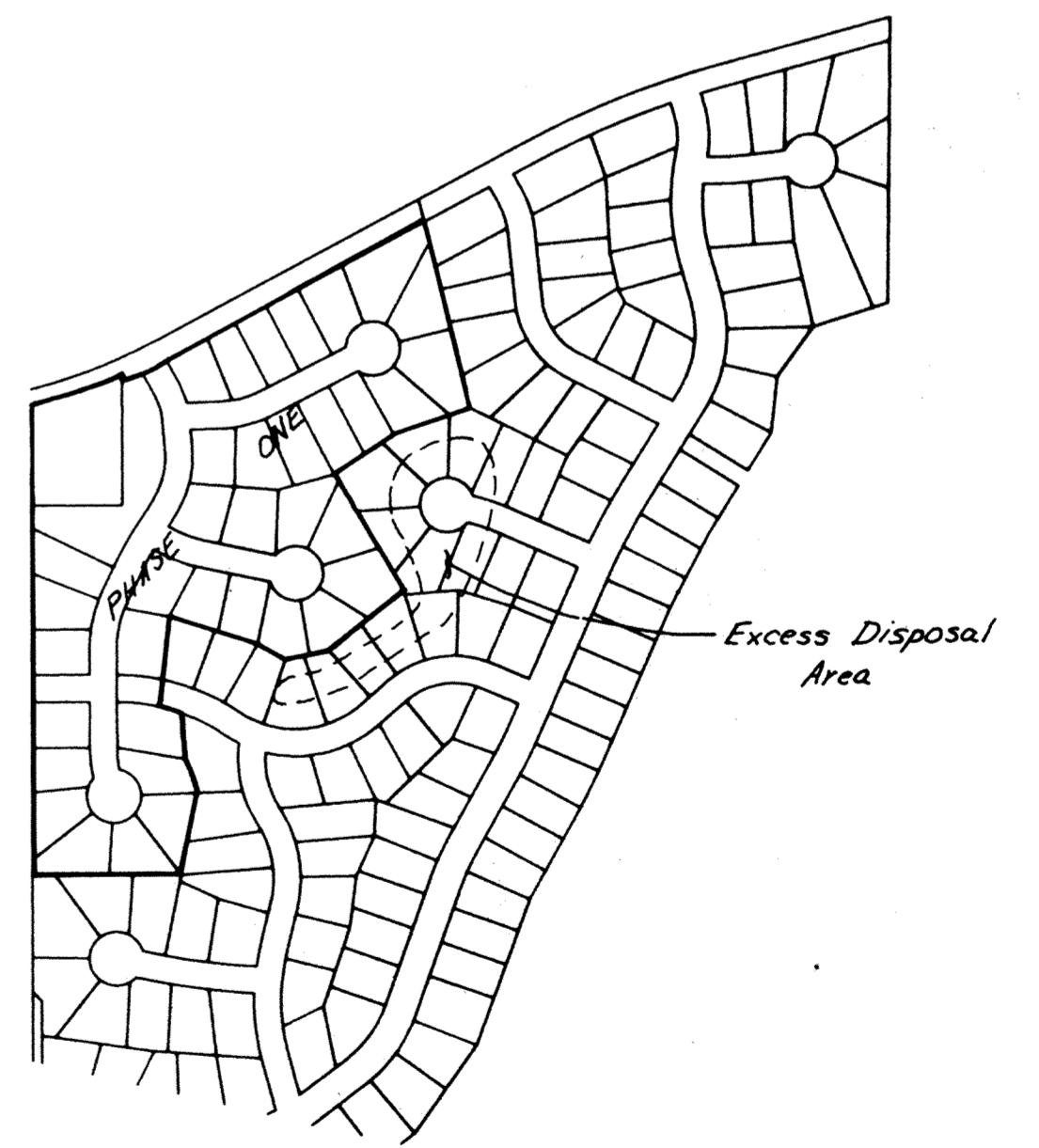
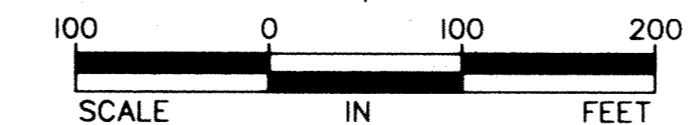
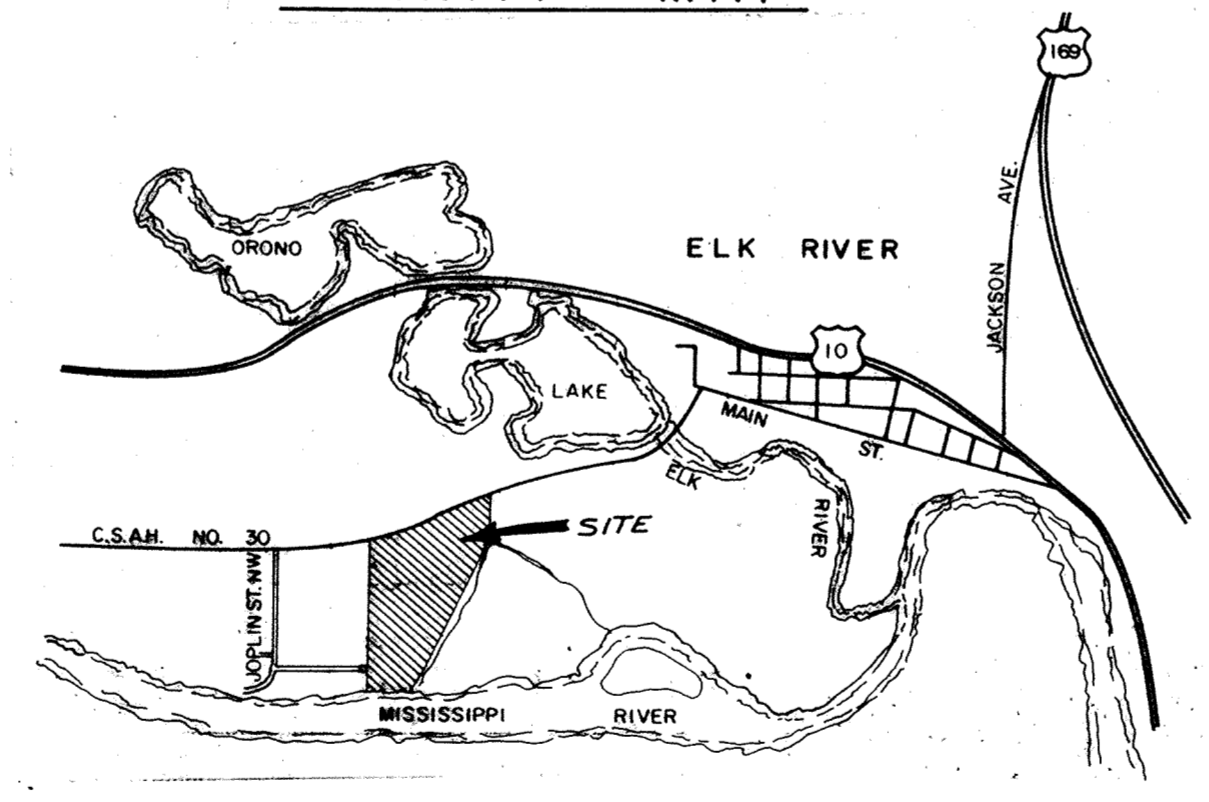
SUGGESTED PLACEMENT OF SEDIMENT CONTROL BALES



TYPICAL ROAD SECTION
No Scale



VICINITY MAP



RECORD PLAN NOV, 1993

ORIGINAL DATE: **6-17-93**

DESIGN BY: _____

DRAWN BY: _____

CHECKED BY: _____

REVISIONS:

I HEREBY CERTIFY THAT THIS PLAN, SPECIFICATION, OR REPORT WAS PREPARED BY ME OR UNDER MY DIRECT SUPERVISION AND THAT I AM A DULY REGISTERED ENGINEER UNDER THE STATE OF MINNESOTA STATUTES SECTIONS 326.02 TO 326.16.

SIGNED: *John Oliver*

DATE: **6/17/93** REG. NO **20383**

John Oliver & Associates, Inc.

580 Dodge Avenue
Elk River, Minnesota
(612)441-2072 (FAX)441-5885

Civil Engineering, Land Surveying, Land Planning

SAP No.

MISSISSIPPI OAKS
PHASE ONE
IRV MOLDENHAUER
FINAL GRADING, DRAINAGE
AND EROSION CONTROL PLAN

SHEET **12 OF 16** FILE NO. **6521**