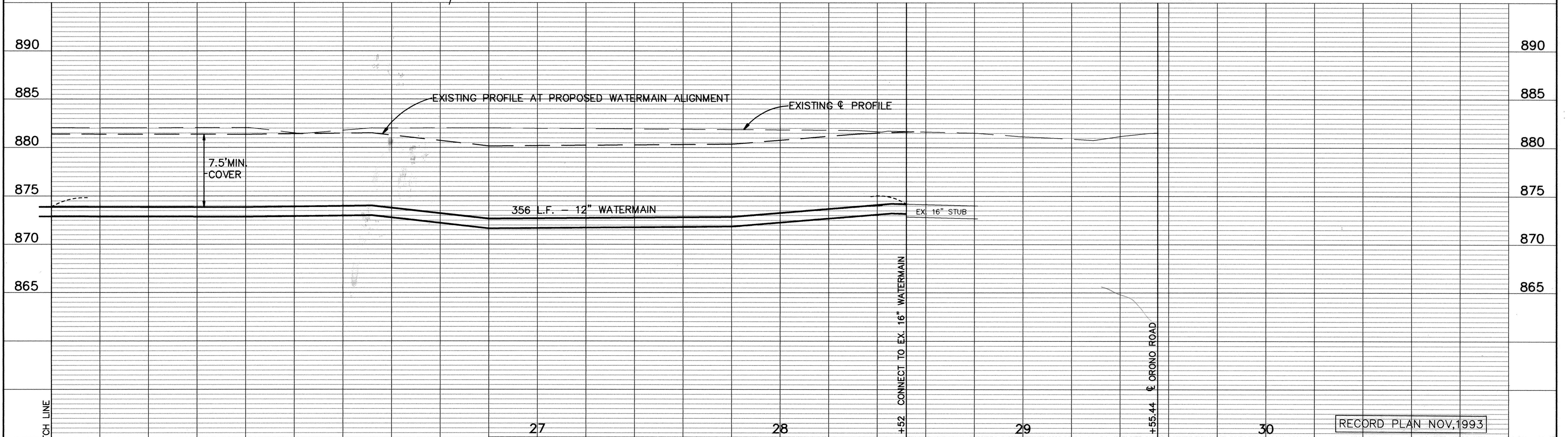
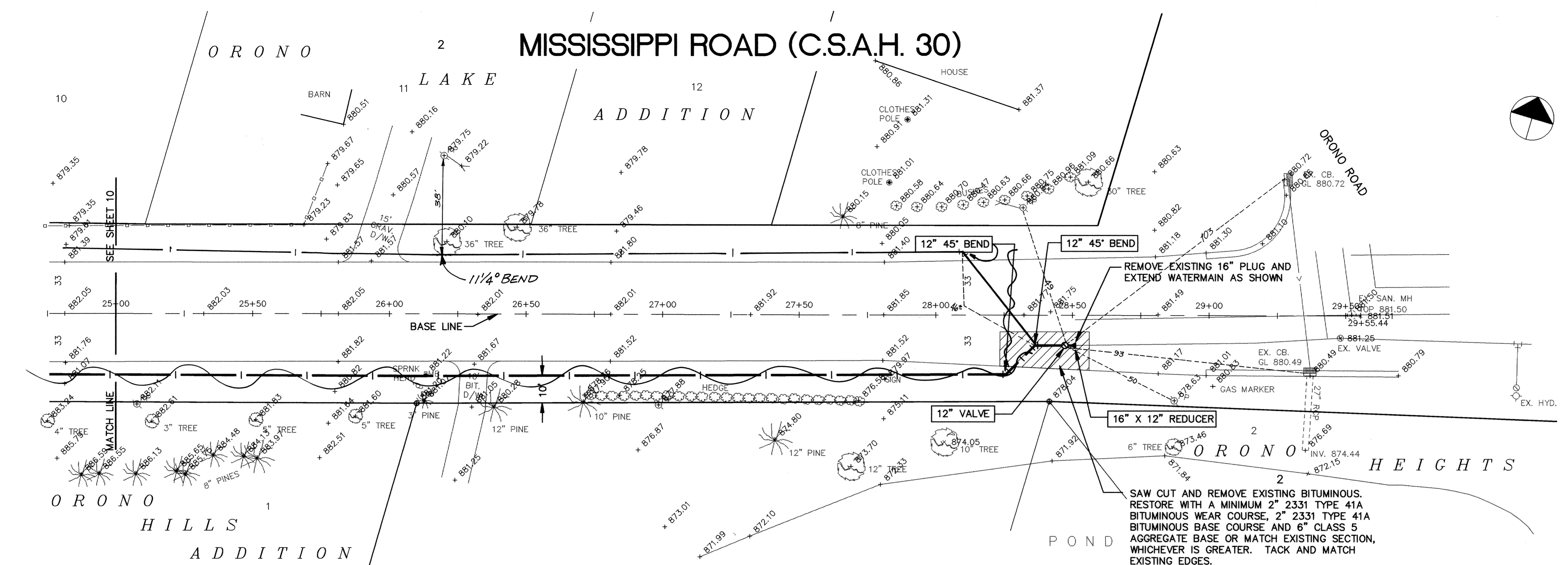


MISSISSIPPI ROAD (C.S.A.H. 30)



25	ER164-9	26
----	---------	----

I HEREBY CERTIFY THAT THIS PLAN, SPECIFICATION, OR REPORT WAS PREPARED BY ME OR UNDER MY DIRECT SUPERVISION AND THAT I AM A DULY REGISTERED PROFESSIONAL ENGINEER UNDER THE LAWS OF THE STATE OF MINNESOTA.

Mark S. Gustafson
DATE 6/2/93 REG. NO. 19130

MS&A CONSULTING ENGINEERS
Maier Stewart & Associates Inc.

1959 SLOAN PLACE (612) 774-6021 ST. PAUL, MINNESOTA 55117
9800 SHELARD PARKWAY (612) 546-0432 MINNEAPOLIS, MINNESOTA 55441

REVISIONS	DATE	DESCRIPTION

DESIGNED _____
CHECKED _____
DRAWN _____
GRAPHIC SCALE
0 HORIZ. 20'
0 VERT. 5'

CITY OF ELK RIVER
WATERMAIN
MISSISSIPPI ROAD (C.S.A.H. 30) STA. 25+00 TO 29+55.44

DATE JUNE 1993 SHEET 11 OF 16 SHEETS PROJECT NO. 230-164