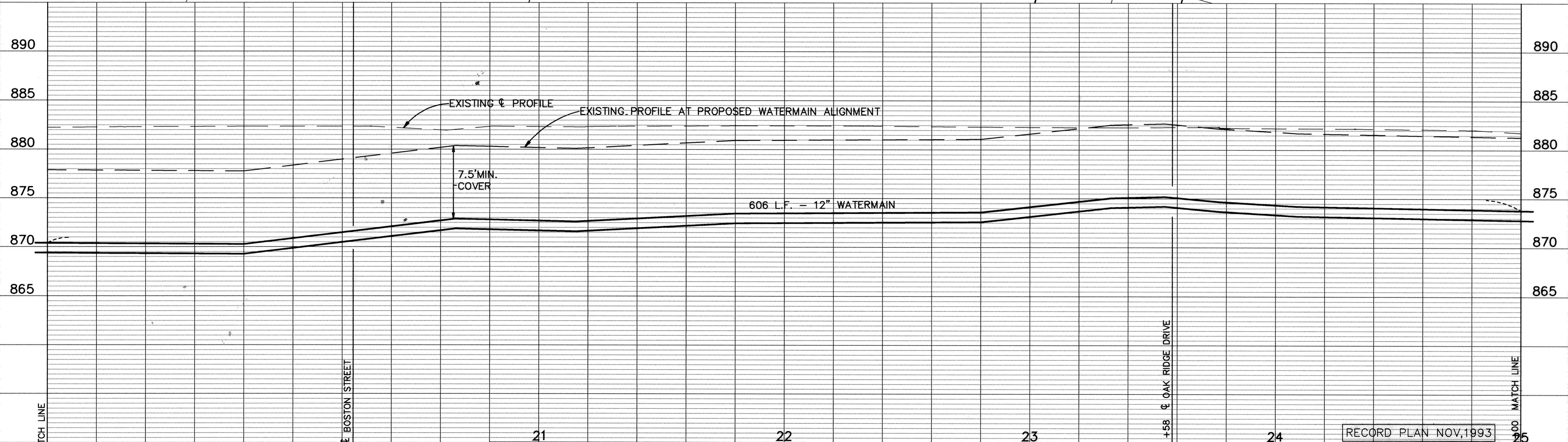
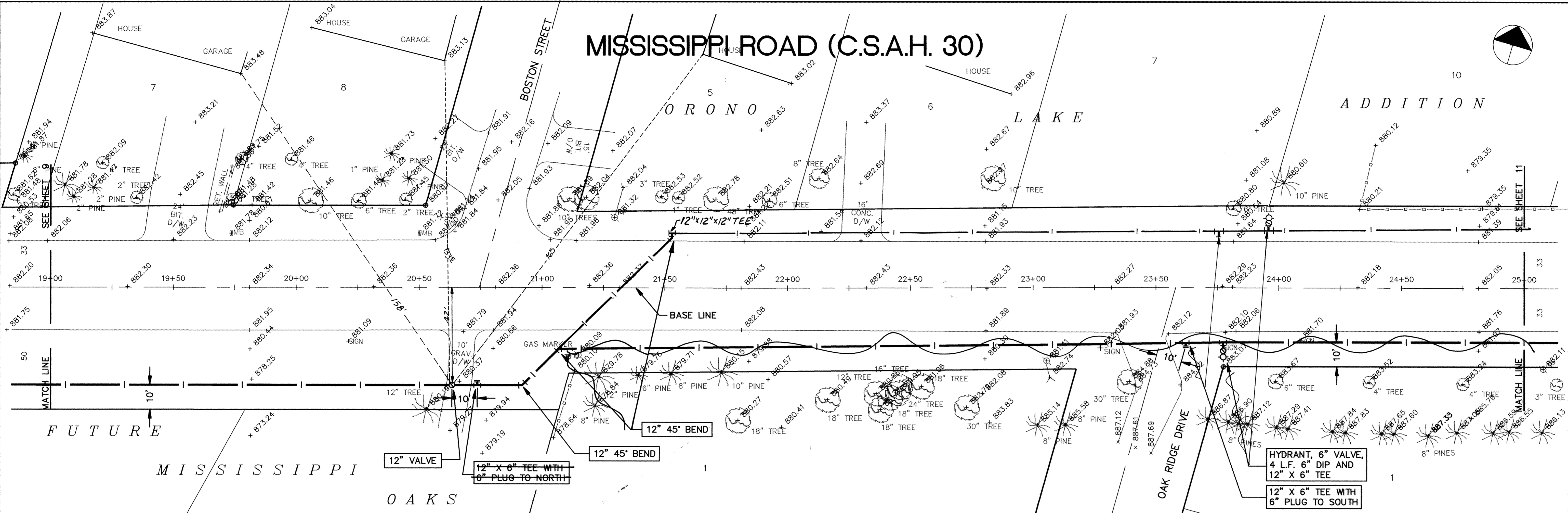


MISSISSIPPI ROAD (C.S.A.H. 30)

ORONO

L A K E

A D D I T I O N



I HEREBY CERTIFY THAT THIS PLAN, SPECIFICATION, OR REPORT WAS PREPARED BY ME OR UNDER MY DIRECT SUPERVISION AND THAT I AM A DULY REGISTERED PROFESSIONAL ENGINEER UNDER THE LAWS OF THE STATE OF MINNESOTA.

Mark S. Hushon
 DATE 6/19/93 REG. NO. 19130

MS&A CONSULTING ENGINEERS
 Maier Stewart & Associates Inc.
 1959 SLOAN PLACE (612) 774-6021 ST. PAUL, MINNESOTA 55117
 9800 SHELARD PARKWAY (612) 546-0432 MINNEAPOLIS, MINNESOTA 55441

REVISIONS	DATE	DESCRIPTION	DESIGNED	CHECKED	DRAWN

CITY OF ELK RIVER
 WATERMAIN
 MISSISSIPPI ROAD (C.S.A.H. 30) STA. 19+00 TO 25+00

GRAPHIC SCALE
 0 HORIZ. 20
 0 VERT. 5

DATE JUNE 1993 SHEET 10 OF 16 SHEETS PROJECT NO. 230-164