

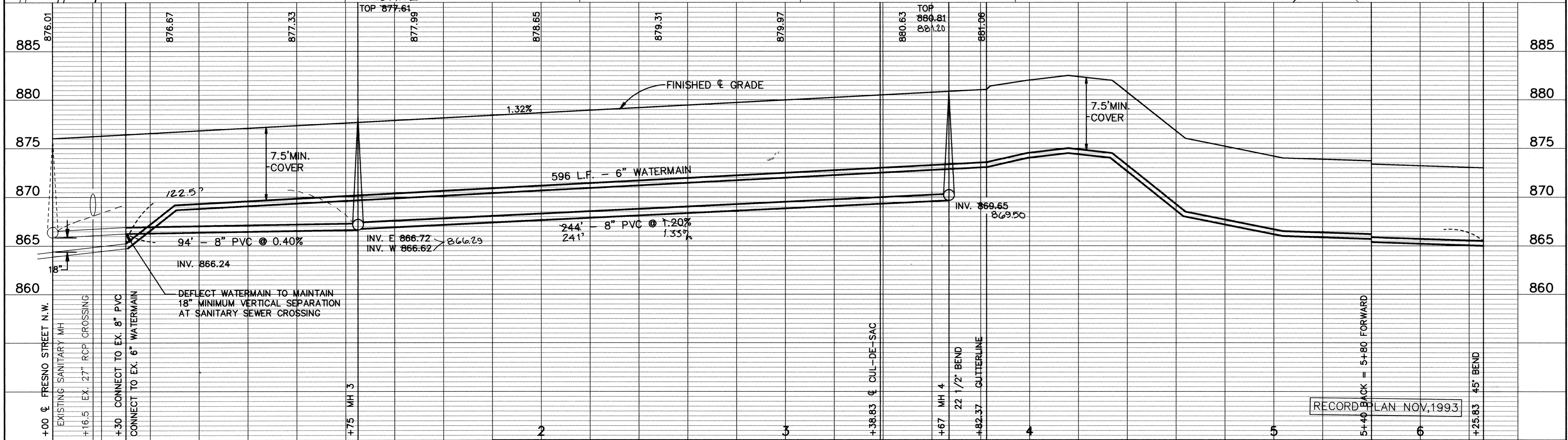
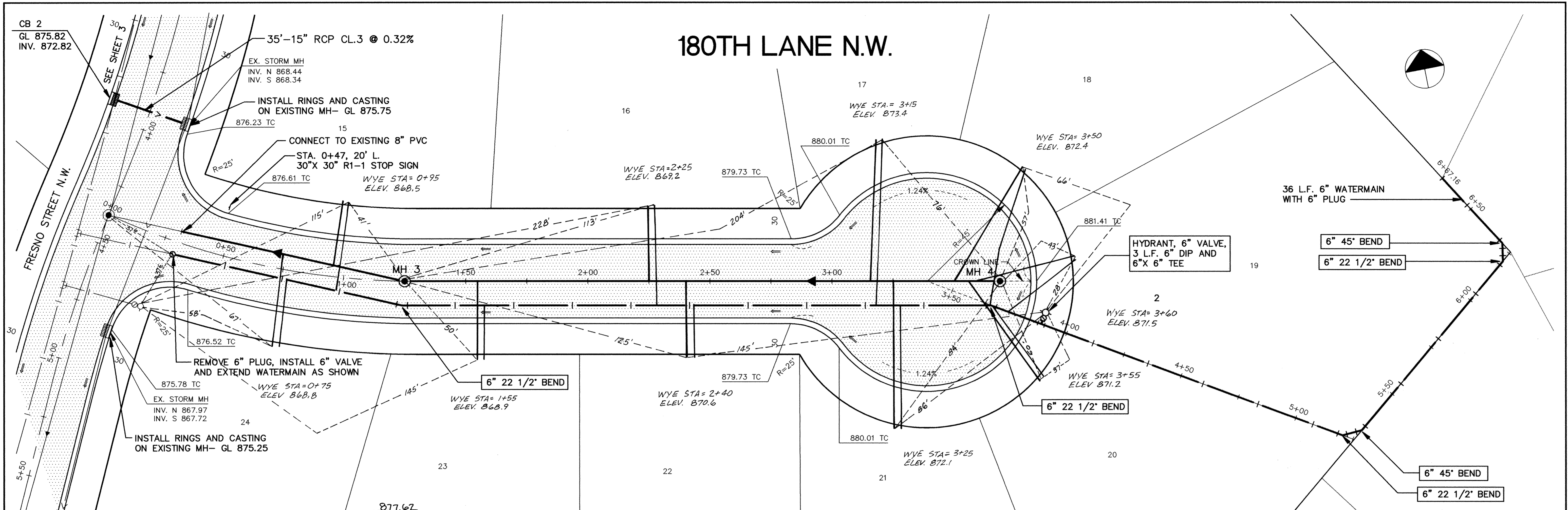
ARCAD PRODUCTS • NEW UPR, MINNESOTA
PRODUCED BY PART NUMBER 6592

ARCAD PRODUCTS • NEW UPR, MINNESOTA
PRODUCED BY PART NUMBER 6592

ARCAD PRODUCTS • NEW UPR, MINNESOTA
PRODUCED BY PART NUMBER 6592

ARCAD PRODUCTS • NEW UPR, MINNESOTA
PRODUCED BY PART NUMBER 6592

180TH LANE N.W.



| | | | |
|---|---------|----------------|--------------------|
| 0 | +00 | CL | FRESNO STREET N.W. |
| 1 | +16.5 | EX. | 27" RCP CROSSING |
| 2 | +30 | CONNECT TO EX. | 8" PVC |
| 3 | +75 | MH 3 | |
| 4 | +138.83 | CL | DE-SAC |
| 5 | +167 | MH 4 | |
| 6 | +182.37 | CL | CUTTERLINE |
| 7 | +25.83 | CL | 45" BEND |

I HEREBY CERTIFY THAT THIS PLAN, SPECIFICATION, OR REPORT WAS PREPARED BY ME OR UNDER MY DIRECT SUPERVISION AND THAT I AM A DULY REGISTERED PROFESSIONAL ENGINEER UNDER THE LAWS OF THE STATE OF MINNESOTA.

Mark V. Graham
DATE 4/19/93 REG. NO. 19130

MS&A CONSULTING ENGINEERS
Maier Stewart & Associates Inc.

1959 SLOAN PLACE (612) 774-6021 ST. PAUL, MINNESOTA 55117
9800 SHELARD PARKWAY (612) 546-0432 MINNEAPOLIS, MINNESOTA 55441

| REVISIONS | DATE | DESCRIPTION | DESIGNED | CHECKED | DRAWN |
|-----------|------|-------------|----------|---------|-------|
| | | | | | |

GRAPHIC SCALE
0 HORIZ. 20'
0 VERT. 5'

CITY OF ELK RIVER
SANITARY SEWER, WATERMAIN, STREET & STORM SEWER
180TH LANE N.W. STA. 0+00 TO 6+67

DATE MAY 1993 SHEET 6 OF 16 SHEETS PROJECT NO. 230-164