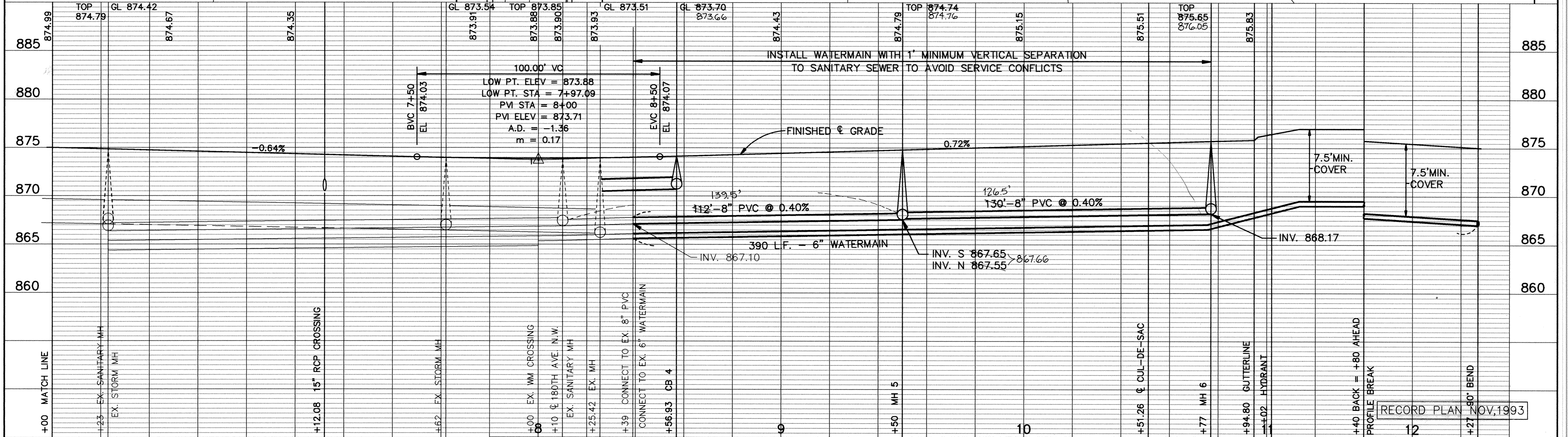
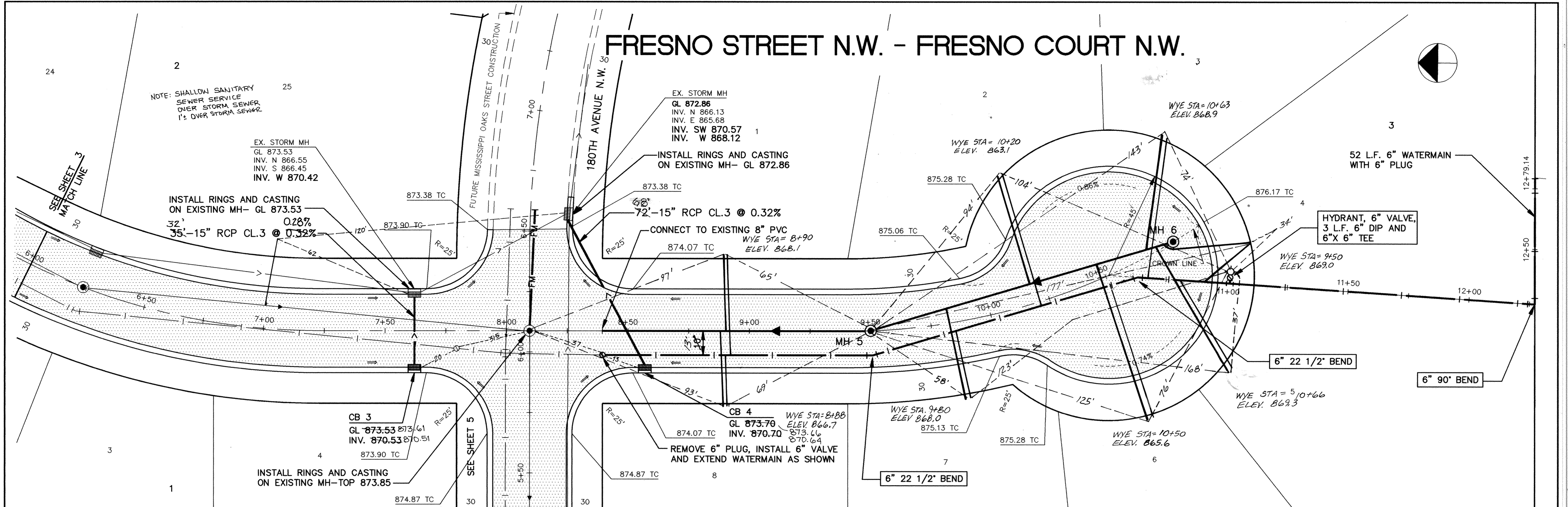
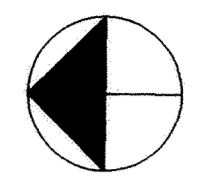


FRESNO STREET N.W. - FRESNO COURT N.W.



I HEREBY CERTIFY THAT THIS PLAN, SPECIFICATION, OR REPORT WAS PREPARED BY ME OR UNDER MY DIRECT SUPERVISION AND THAT I AM A DULY REGISTERED PROFESSIONAL ENGINEER UNDER THE LAWS OF THE STATE OF MINNESOTA.

Mark J. Stuchman
DATE 10/1/93 REG. NO. 19130

MS&A CONSULTING ENGINEERS
Maier Stewart & Associates Inc.

1959 SLOAN PLACE (612) 774-6021 ST. PAUL, MINNESOTA 55117
9800 SHELARD PARKWAY (612) 546-0432 MINNEAPOLIS, MINNESOTA 55441

DATE	DESCRIPTION

CITY OF ELK RIVER
SANITARY SEWER, WATERMAIN, STREET & STORM SEWER
FRESNO STREET N.W. STA. 6+00 TO 12+79
FRESNO COURT N.W.

DESIGNED: _____
CHECKED: _____
DRAWN: CLS

GRAPHIC SCALE
0 20
1 HORIZ. 20
0 5
1 VERT. 5

DATE MAY 1993 SHEET 4 OF 16 SHEETS PROJECT NO. 230-164