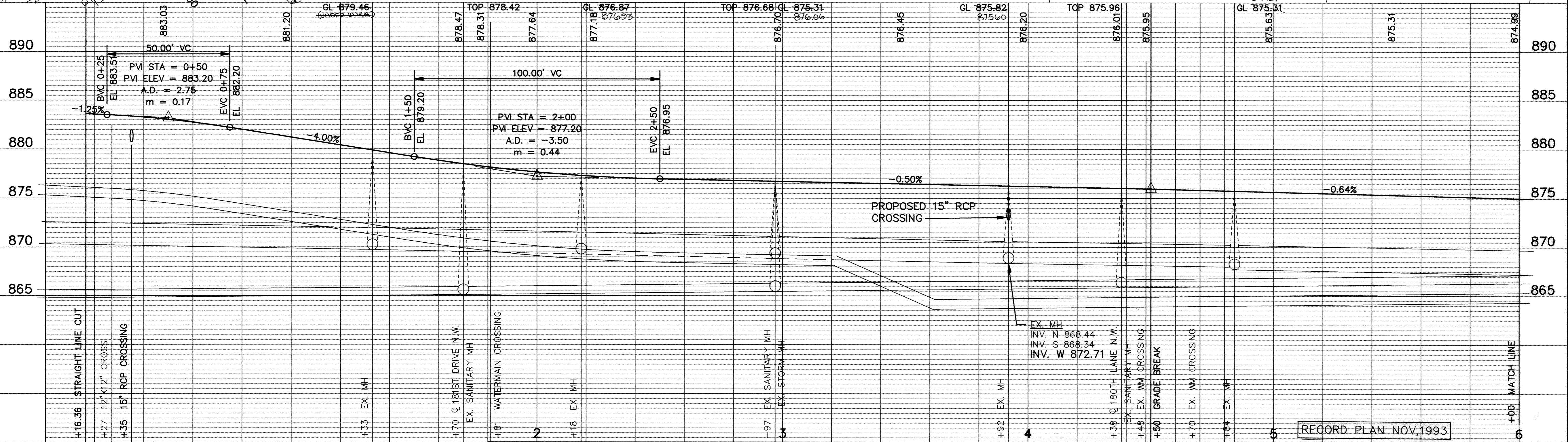
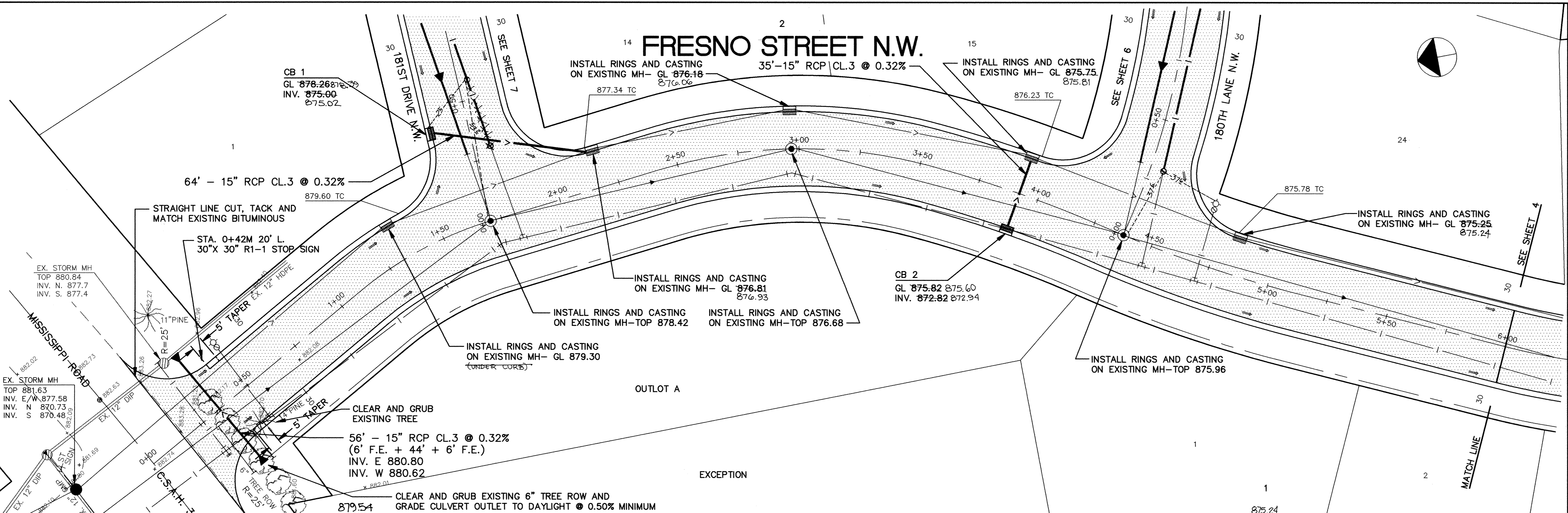


# FRESNO STREET N.W.

35'-15" RCP CL.3 @ 0.32%



I HEREBY CERTIFY THAT THIS PLAN, SPECIFICATION, OR REPORT WAS PREPARED BY ME OR UNDER MY DIRECT SUPERVISION AND THAT I AM A DULY REGISTERED PROFESSIONAL ENGINEER UNDER THE LAWS OF THE STATE OF MINNESOTA.

*Mark V. Stephane*  
 DATE 6/4/93 REG. NO. 19130

**MS&A** CONSULTING ENGINEERS  
**Maier Stewart & Associates Inc.**

1959 SLOAN PLACE (612) 774-6021 ST. PAUL, MINNESOTA 55117  
 9800 SHELARD PARKWAY (612) 546-0432 MINNEAPOLIS, MINNESOTA 55441

REVISIONS	DATE	DESCRIPTION

DESIGNED \_\_\_\_\_  
 CHECKED \_\_\_\_\_  
 DRAWN CLS

GRAPHIC SCALE  
 0 HORIZ. 20  
 0 VERT. 5

CITY OF ELK RIVER  
 SANITARY SEWER, WATERMAIN, STREET & STORM SEWER  
 FRESNO STREET NW STA. 0+00 TO 6+00

DATE MAY 1993 SHEET 3 OF 16 SHEETS PROJECT NO. 230-164

SAECO PRODUCTS • NEW HOPKINS, MINNESOTA  
 REORDER BY PART NUMBER 6582