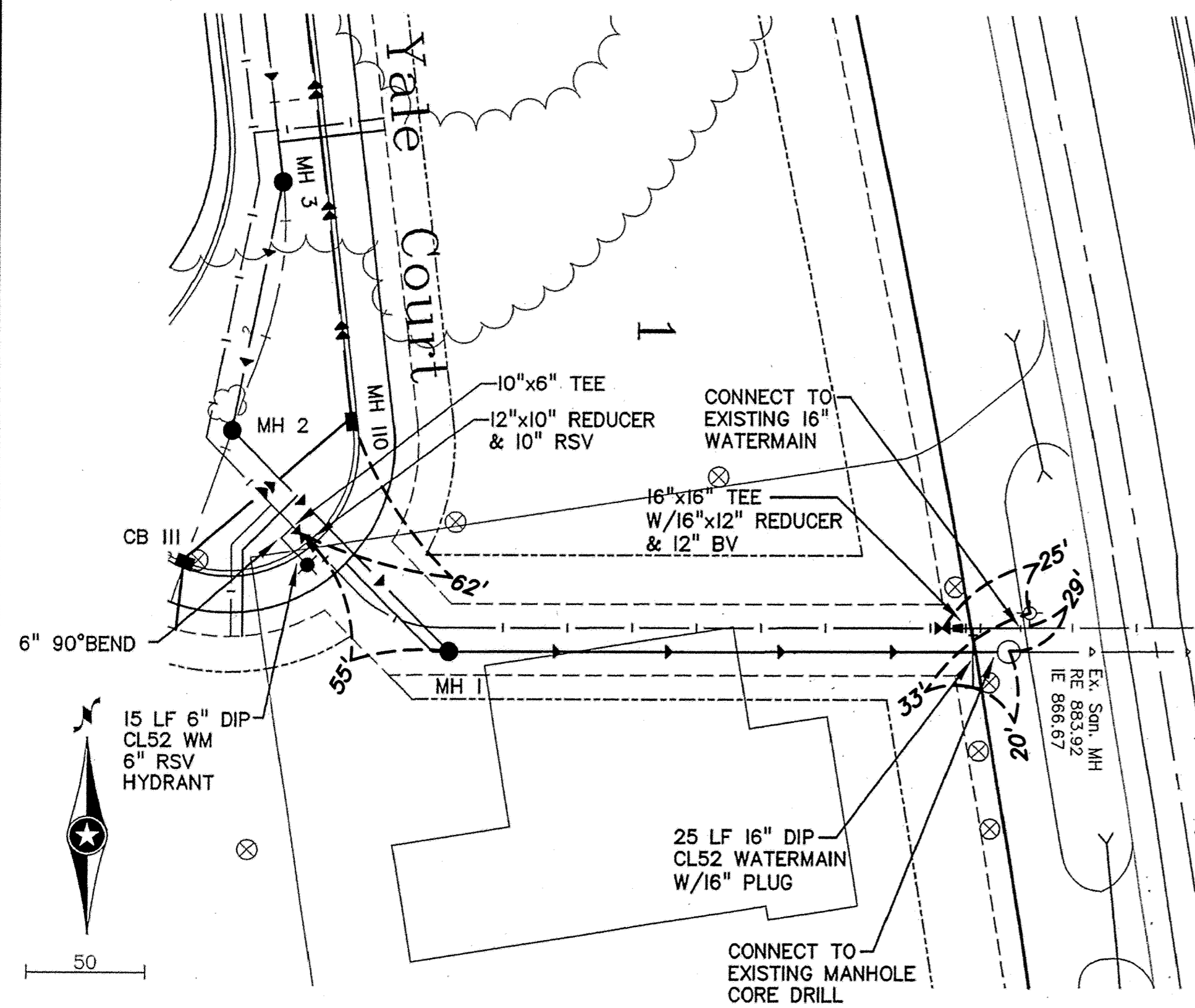
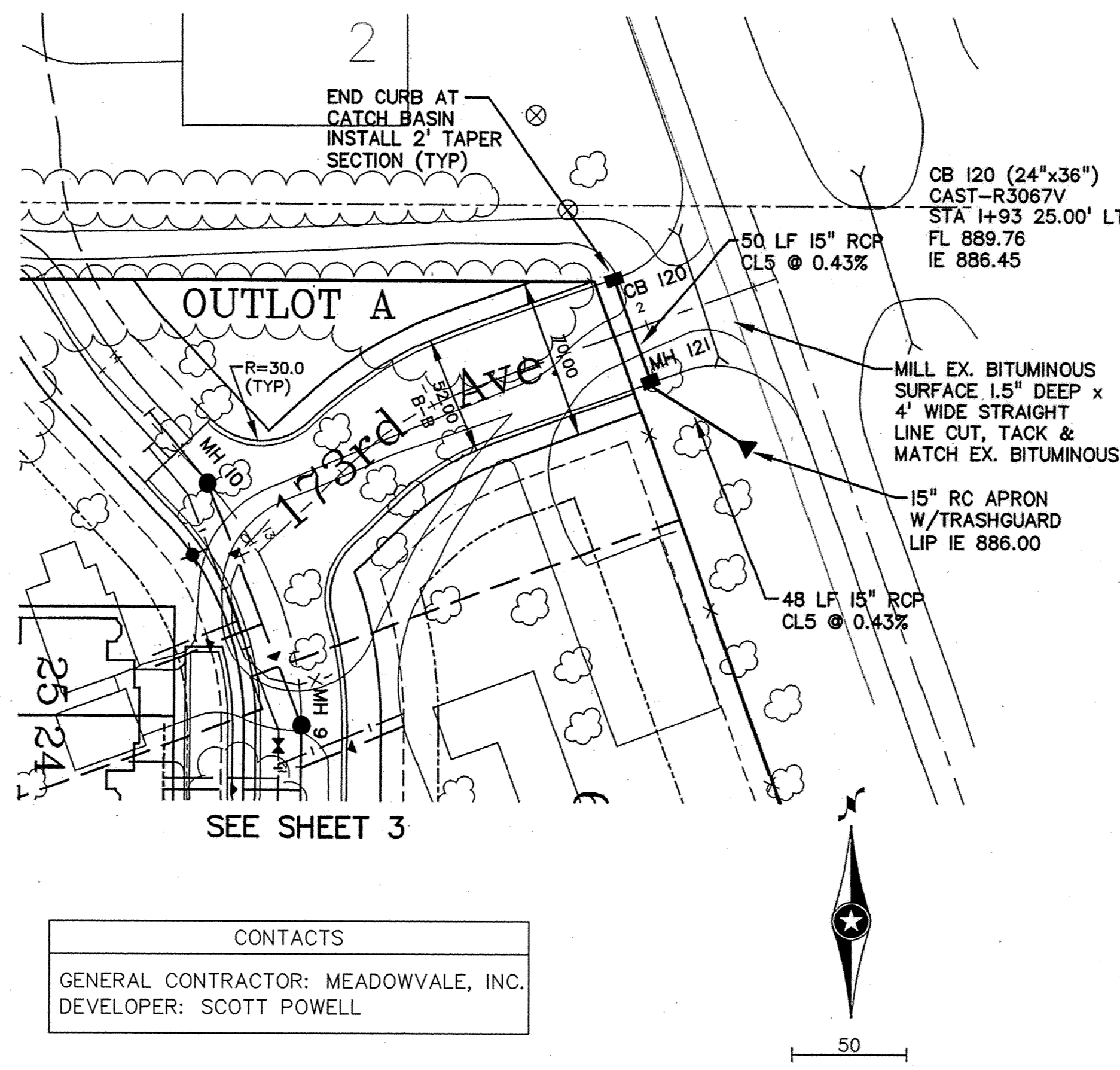


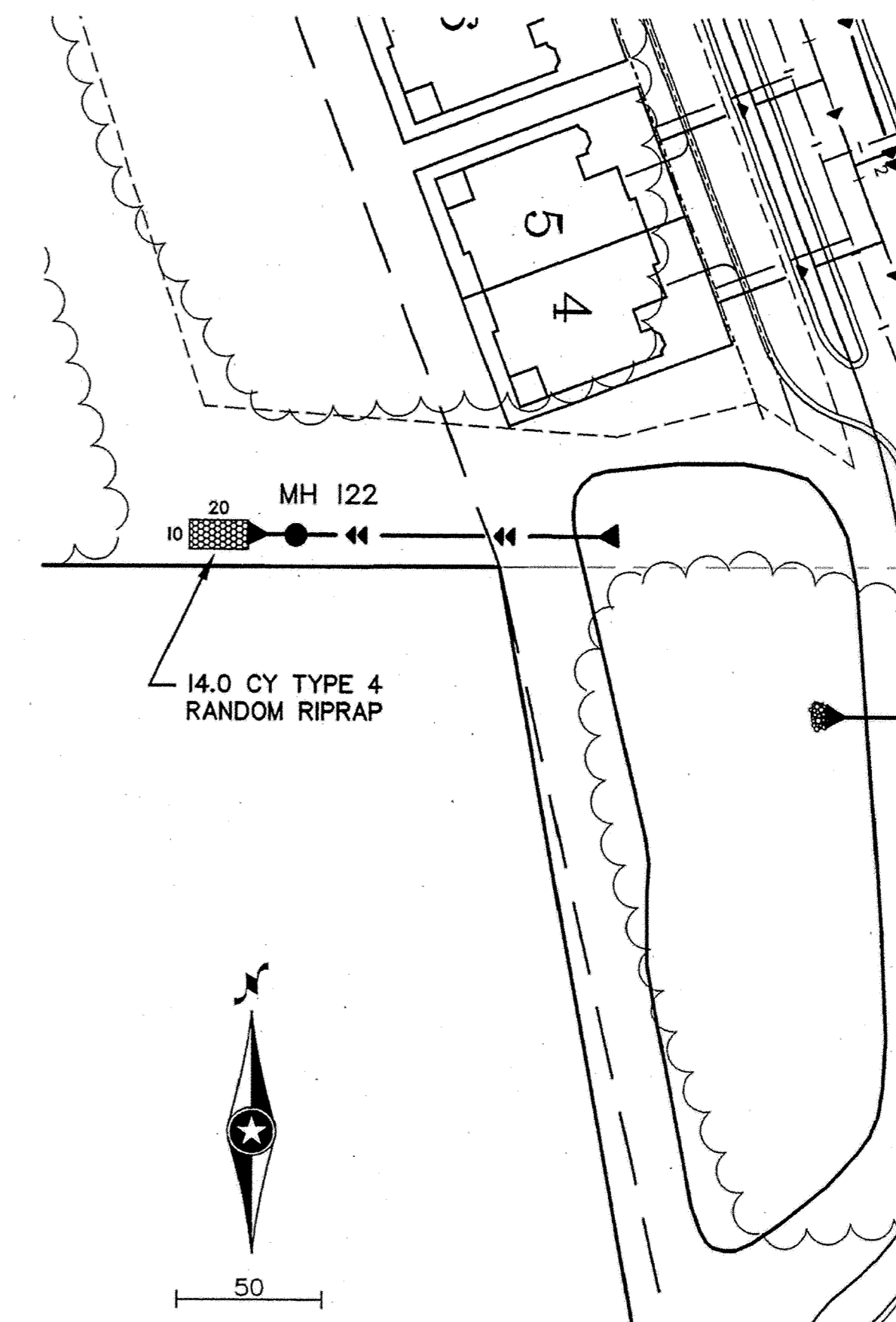
SANITARY SEWER & WATERMAIN



173rd AVENUE NW



STORM SEWER

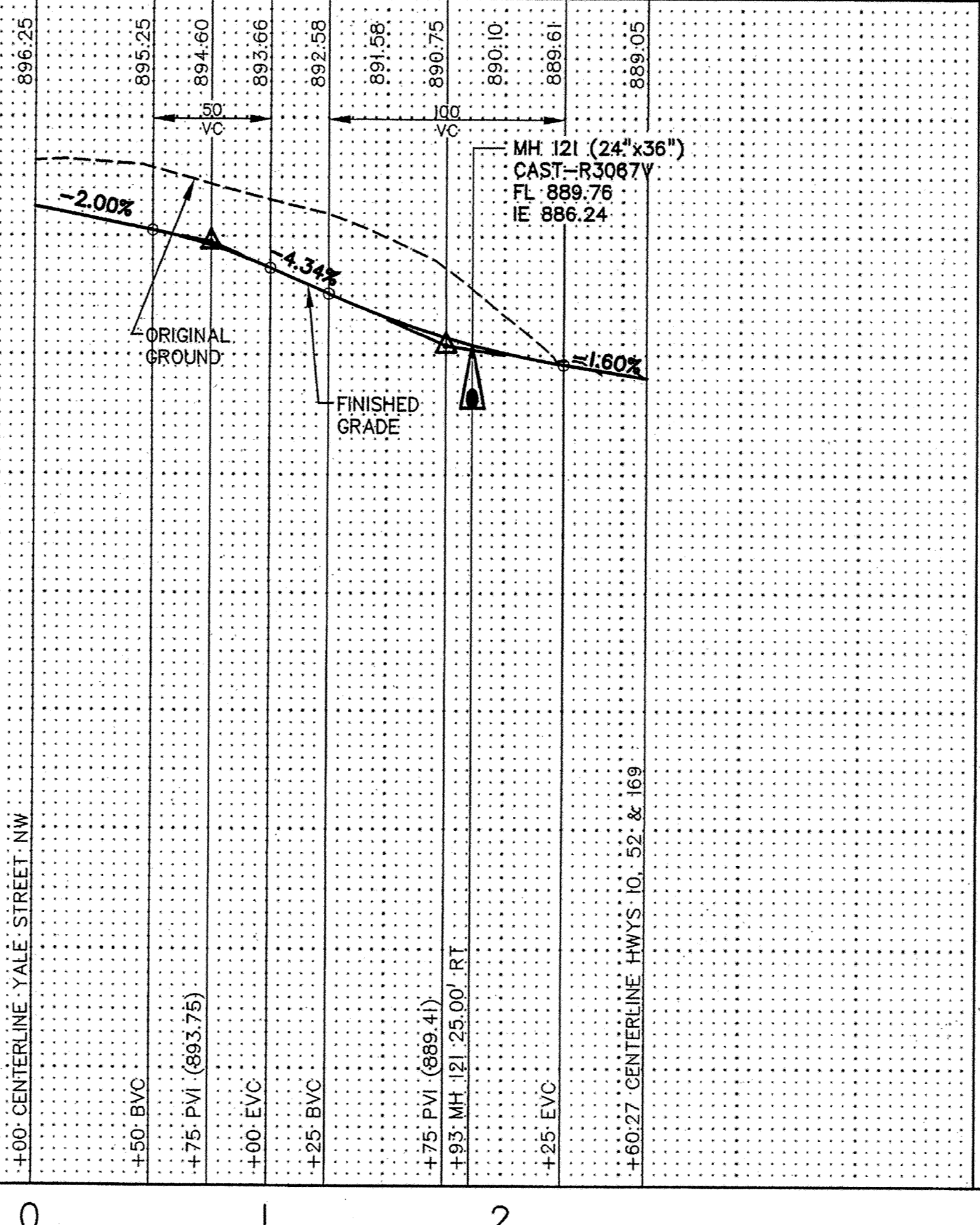
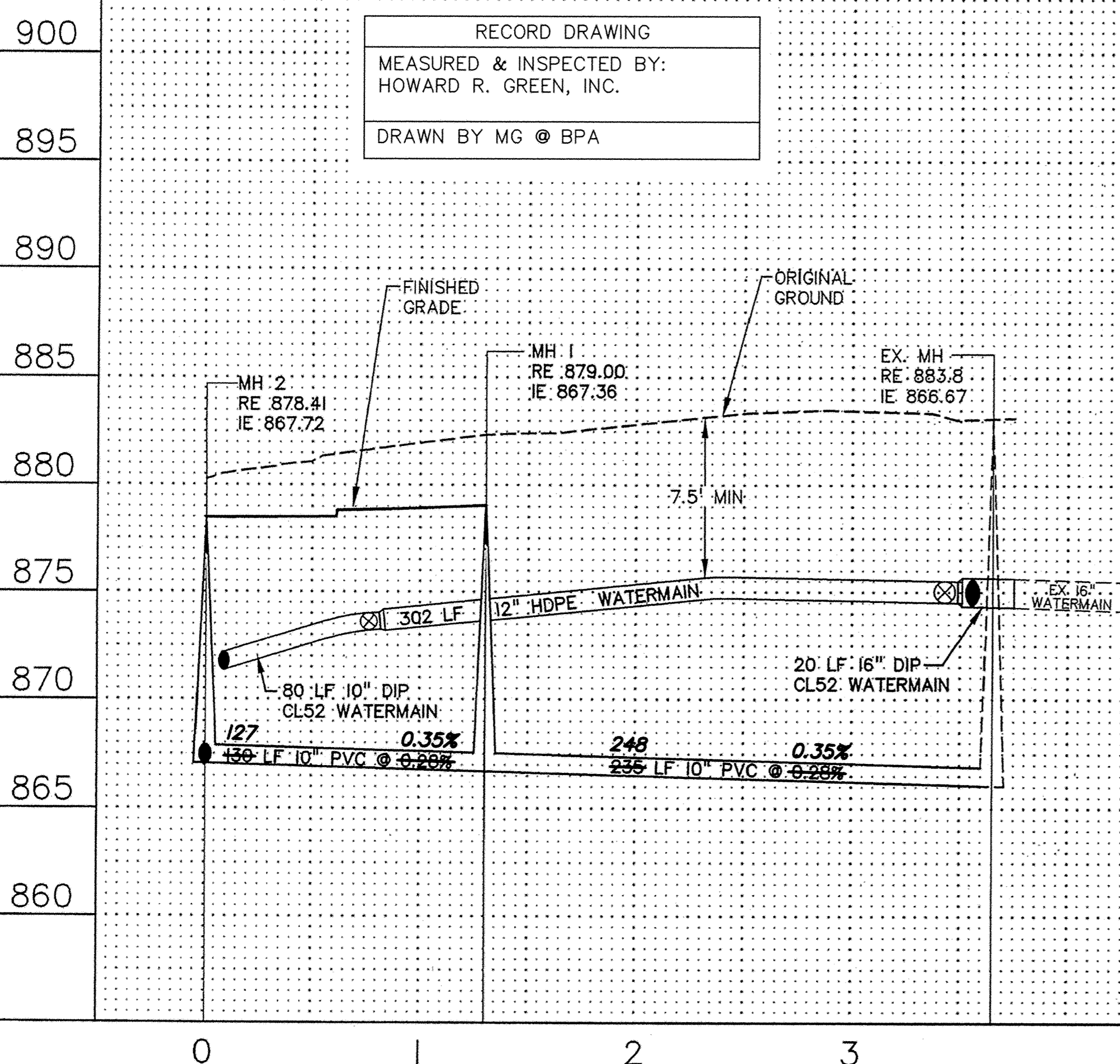


REV. NO.	DATE	DESCRIPTION
1	6/4/01	CITY COMMENTS
2	8/2/01	REALIGNMENT OF 171ST AVENUE
3	8/9/01	CITY COMMENTS
4	8/23/01	VALF COURT GRADES & UTILITIES
5	10/26/06	AS-BUILT REVISIONS

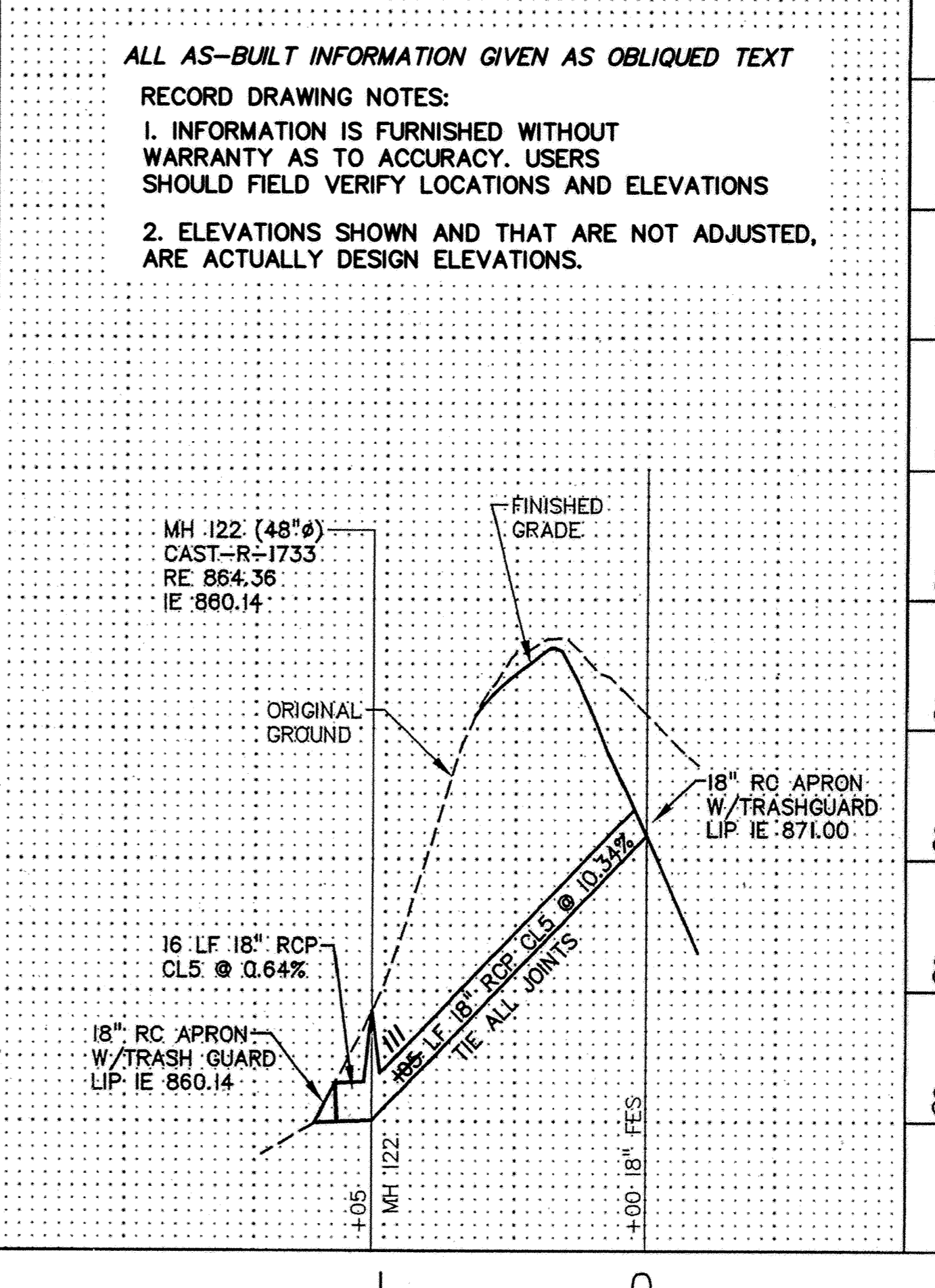
I hereby certify that this plan, specification, or report was prepared by me or under my direct supervision and that I am a duly Licensed Professional Engineer under the laws of the state of Minnesota.
 Signed: CHRISTOPHER C. OTTERNESS
 Reg. No. 44901
 Date: 06-06-07

CONTACTS
 GENERAL CONTRACTOR: MEADOWVALE, INC.
 DEVELOPER: SCOTT POWELL

RECORD DRAWING
 MEASURED & INSPECTED BY:
 HOWARD R. GREEN, INC.
 DRAWN BY MG @ BPA



ALL AS-BUILT INFORMATION GIVEN AS OBLIQUED TEXT
 RECORD DRAWING NOTES:
 1. INFORMATION IS FURNISHED WITHOUT WARRANTY AS TO ACCURACY. USERS SHOULD FIELD VERIFY LOCATIONS AND ELEVATIONS
 2. ELEVATIONS SHOWN AND THAT ARE NOT ADJUSTED, ARE ACTUALLY DESIGN ELEVATIONS.



BOGART, PEDERSON & ASSOCIATES, INC.
 LAND SURVEYING
 CIVIL ENGINEERING
 MAPPING
 13076 FIRST STREET, BECKER, MN 55308-9322
 PH: 763-281-1111 FAX: 763-281-1112

MISSISSIPPI RIDGE
 ELK RIVER, MN
SCOTT POWELL
 STREET, SAN. SEWER, STORM SEWER & WATERMAIN CONSTRUCTION PLAN
 173rd AVENUE NW, SANITARY & STORM SEWER

SHEET NO. **5** OF **5**