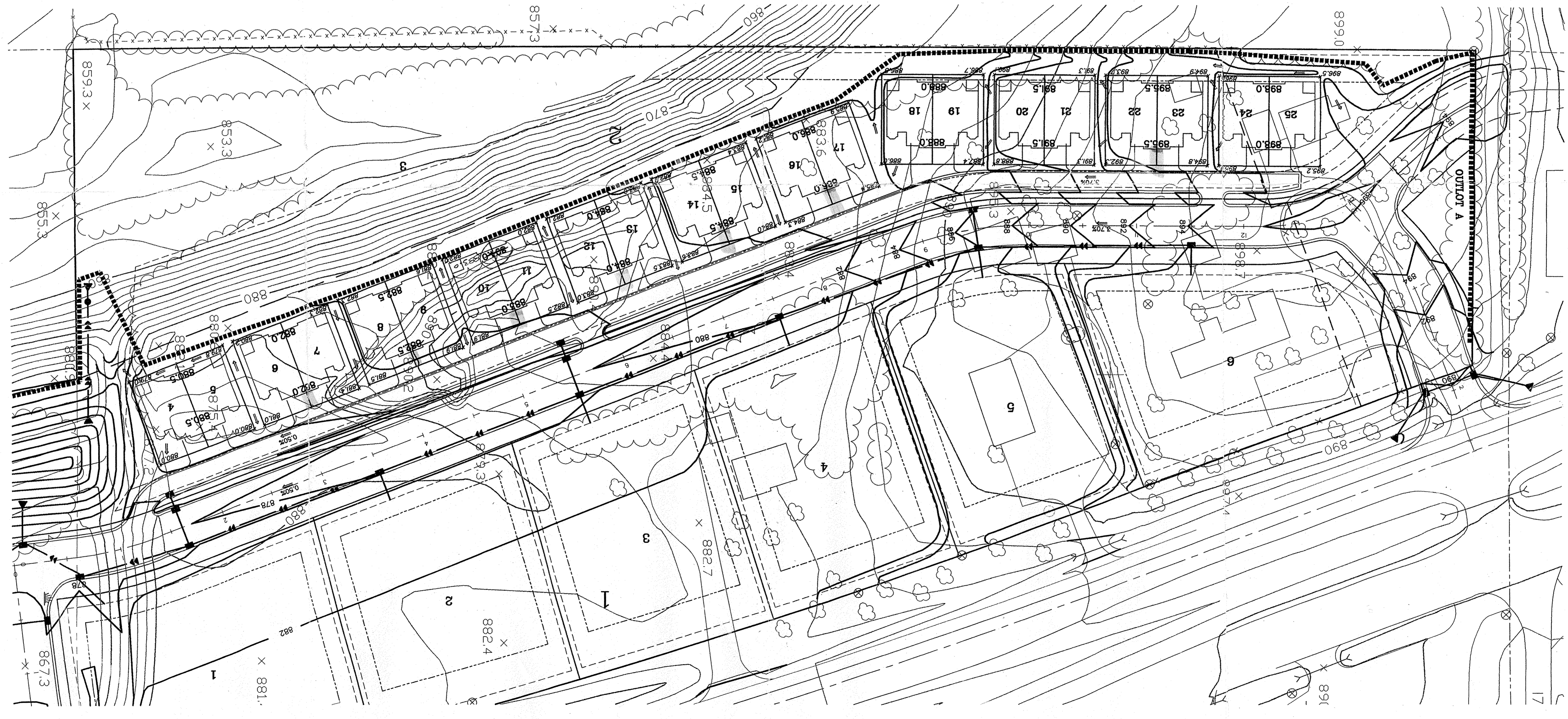


APPROVED
 This Plan Revises the Previous Approved Plans DATED 12/14/01
 3/6/02
 John R. Greenlee
 Planning & Engineering

NOTE: Sample flowers need to be dropped if they exceed 10% slope as measured at the contourline of the driveway.



SHEET NO. _____ OF _____
MISSISSIPPI RIDGE
ELK RIVER, MN
MR. SCOTT POWELL
TOWNSHIP DEVELOPMENT PLAN

John Oliver & Associates, Inc.
 Civil Engineering, Land Surveying, Land Planning
 580 Dodge Avenue
 Elk River, Minnesota 55330
 763-441-2072 FAX 763-441-6665
 Offices in: Elk River, Burnsville & Brooklyn Park, Minnesota

I hereby certify that this plan, specification, or report was prepared by me or under my direct supervision and that I am a Licensed Professional Engineer under the laws of the State of Minnesota.
 Signed: John S. Williams
 Date: 12/3/01 Reg. No. 26777

DATE	REV	DESCRIPTION
12/3/01	1	DESIGN BY: TGL
2/10/01	2	CITY COMMENTS
2/14/02	3	REVISED ELEV. 827, 12&13, ADD REMAINING WALL 4&5
2/19/02	4	REMOVED REMAINING WALL 4&5
		TEXT: NONE
		DWG: MRTH-DEVDWG
		FILE NO.: 7903.10-11